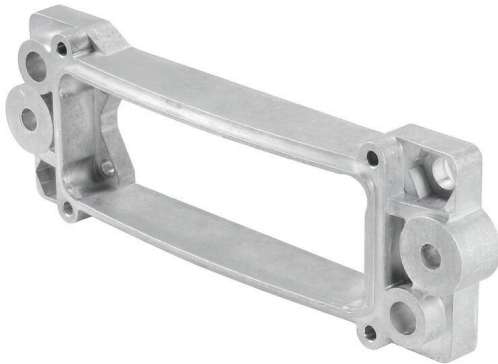


**HDC IP68 24B HP FRAME**

**Weidmüller Interface GmbH & Co. KG**  
Klingenbergstraße 26  
D-32758 Detmold  
Germany

[www.weidmueller.com](http://www.weidmueller.com)



The RockStar® HighPower housings are manufactured from high-strength die-cast aluminium and offer perfect protection against harsh environmental conditions thanks to continual optimisation. The multi-part housing gives users the opportunity to examine work processes down to the last step in the workflow.

**General ordering data**

Version	HDC enclosures, Installation size: 8, Protection degree: IP68, IP69, in plugged condition, Counter frame, Clamping yoke connection, Standard
Order No.	<a href="#">1282820000</a>
Type	HDC IP68 24B HP FRAME
GTIN (EAN)	4050118073010
Qty.	1 items

## HDC IP68 24B HP FRAME

**Weidmüller Interface GmbH & Co. KG**  
 Klingenbergstraße 26  
 D-32758 Detmold  
 Germany

www.weidmueller.com

## Technical data

## Approvals

ROHS	Conform
------	---------

## Dimensions and weights

Depth	217 mm	Depth (inches)	8.5433 inch
Height	21 mm	Height (inches)	0.8268 inch
Width	72 mm	Width (inches)	2.8346 inch
Net weight	305 g		

## Temperatures

Limit temperature	-50 °C ... 125 °C
-------------------	-------------------

## Environmental Product Compliance

RoHS Compliance Status	Compliant without exemption
REACH SVHC	No SVHC above 0.1 wt%

## General data

Design of housing	Counter frame	Installation size	8
UL 94 flammability rating	None	Colour	Silver grey, black (similar to RAL 9005)
Housing main material	diecast aluminium	Surface finish	all others
Type	Counter-frame	Series	HighPower
Free from halogens	false	EMC housings	Yes
BG	8	Protection degree	IP68, IP69, in plugged condition

## General data

Colour	Silver grey, black (similar to RAL 9005)	Surface finish	all others
Type	Counter-frame	Series	HighPower

## Important note

Product information	Depending on the intended operation, internally generated voltages can superimpose the working voltage and contain corresponding peaks. It is imperative to ensure that these peak voltages do not exceed the rated voltage. For applications outside of this specification, please contact us.
---------------------	---

## Classifications

ETIM 8.0	EC000437	ETIM 9.0	EC000437
ETIM 10.0	EC000437	ECLASS 14.0	27-44-02-02
ECLASS 15.0	27-44-02-02		