

## EW 35 DB

**Weidmüller Interface GmbH & Co. KG**

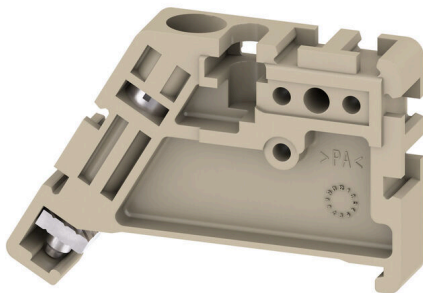
Klingenbergstraße 26

D-32758 Detmold

Germany

[www.weidmueller.com](http://www.weidmueller.com)

### Product image



Weidmüller's range of products includes end brackets that guarantee a permanent, reliable mounting on the terminal rail and prevent sliding. Versions with and without screws are available. The end brackets include marking options, also for group markers, and also a test plug holder.

### General ordering data

Version	End bracket, dark beige, TS 35, V-0, Wemid, Width: 9 mm, 130 °C
Order No.	<a href="#">1269050000</a>
Type	EW 35 DB
GTIN (EAN)	4050118065008
Qty.	50 items

## EW 35 DB

**Weidmüller Interface GmbH & Co. KG**  
 Klingenbergstraße 26  
 D-32758 Detmold  
 Germany

www.weidmueller.com

## Technical data

## Approvals

ROHS	Conform
------	---------

## Dimensions and weights

Depth	27 mm	Depth (inches)	1.063 inch
Height	46 mm	Height (inches)	1.811 inch
Width	9 mm	Width (inches)	0.3543 inch
Net weight	5.32 g		

## Temperatures

Ambient temperature	-5 °C...40 °C	Continuous operating temp., min.	-60 °C
Continuous operating temp., max.	130 °C		

## Environmental Product Compliance

RoHS Compliance Status	Compliant without exemption		
REACH SVHC	No SVHC above 0.1 wt%		
Product Carbon Footprint	Cradle to gate	0.043 kg CO2 eq.	

## Material data

Basic material	Wemid	Colour	dark beige
UL 94 flammability rating	V-0		

## System specifications

Version	For the terminals	Mounting rail	TS 35
---------	-------------------	---------------	-------

## Additional technical data

Installation advice	Direct mounting	Type of mounting	when screwed in
Locking	for screw fixing		

## Conductors for clamping (rated connection)

Tightening torque, max.	0.6 Nm	Tightening torque, min.	0.5 Nm
-------------------------	--------	-------------------------	--------

## General

Installation advice	Direct mounting	Mounting rail	TS 35
---------------------	-----------------	---------------	-------

## Classifications

ETIM 8.0	EC001041	ETIM 9.0	EC001041
ETIM 10.0	EC001041	ECLASS 14.0	27-25-03-02
ECLASS 15.0	27-25-03-02		