

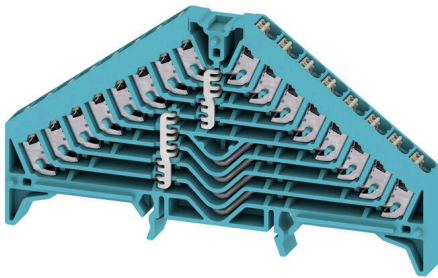
**PPV 8 BL 35X7.5 DGR****Weidmüller Interface GmbH & Co. KG**

Klingenbergstraße 26

D-32758 Detmold

Germany

www.weidmueller.com

**Product image**

PUSH IN terminal blocks for Signal marshalling (PRV) with up to 16 connection levels are specially designed to meet the requirements for wiring initiator and actuator signals in process control engineering. The optimised design guarantees a space saving of up to 50 percent in the panel. And the unique V-shape of the current bars ensures consistently low contact resistances.

**General ordering data**

Version	P-series, Potential distributor, Rated cross-section: 1.5 mm <sup>2</sup> , Number of levels: 8, Number of connections: 32, Colour: blue
Order No.	<a href="#">1267880000</a>
Type	PPV 8 BL 35X7.5 DGR
GTIN (EAN)	4032248112746
Qty.	20 items

## PPV 8 BL 35X7.5 DGR

Weidmüller Interface GmbH & Co. KG  
Klingenbergstraße 26  
D-32758 Detmold  
Germany

www.weidmueller.com

## Technical data

## Approvals

Approvals



ROHS Conform

UL File Number Search [UL Website](#)

Certificate No. (cURus) E60693

## Dimensions and weights

Depth	65.5 mm	Depth (inches)	2.5787 inch
Height	120 mm	Height (inches)	4.7244 inch
Width	9.2 mm	Width (inches)	0.3622 inch
Net weight	47.89 g		

## Temperatures

Storage temperature	-25 °C...55 °C	Ambient temperature	-50 °C...85 °C
Continuous operating temp., min.	-50 °C	Continuous operating temp., max.	130 °C

## Environmental Product Compliance

RoHS Compliance Status	Compliant without exemption
REACH SVHC	No SVHC above 0.1 wt%

## Material data

Basic material	Polycarbonate	Material of operational elements	PBT
Colour	blue	UL 94 flammability rating	V-0

## System specifications

Version	PUSH IN connection, Vertically cross-connected, One end without connector	End cover plate required	Yes
Number of potentials	1	Number of levels	8
Number of clamping points per level	4	Number of potentials per tier	1
Levels cross-connected internally	Yes	PE connection	No
Mounting rail	TS 35 x 7.5	PE function	No

## Additional technical data

Explosion-tested version	No	Type of mounting	Snap-on
--------------------------	----	------------------	---------

## CSA rating data

Wire cross section max. (CSA)	16 AWG	Certificate No. (CSA)	200039-2406089
Voltage size B (CSA)	300 V	Current size B (CSA)	10 A
Voltage size D (CSA)	300 V	Current size D (CSA)	10 A
Wire cross section min. (CSA)	26 AWG		

## Conductors for clamping (additional connection)

Connection type, additional connection PUSH IN

**PPV 8 BL 35X7.5 DGR**

**Weidmüller Interface GmbH & Co. KG**  
 Klingenbergstraße 26  
 D-32758 Detmold  
 Germany

www.weidmueller.com

**Technical data**

**Conductors for clamping (rated connection)**

Wire connection cross section AWG, max.	AWG 16	Connection direction	Inclined / angled
Stripping length	10 mm	Type of connection 2	PUSH IN
Type of connection	PUSH IN	Number of connections	32
Clamping range, max.	1.5 mm <sup>2</sup>	Clamping range, min.	0.13 mm <sup>2</sup>
Blade size	0.6 x 3.5 mm	Wire connection cross section AWG, min.	AWG 24
Wire connection cross-section, finely stranded with wire-end ferrules DIN 46228/4, max.	1.5 mm <sup>2</sup>	Wire connection cross-section, finely stranded with wire-end ferrules DIN 46228/4, min.	0.13 mm <sup>2</sup>
Wire connection cross-section, finely stranded with wire-end ferrules DIN 46228/1, max.	1.5 mm <sup>2</sup>	Wire connection cross-section, finely stranded with wire-end ferrules DIN 46228/1, min.	0.13 mm <sup>2</sup>
Wire connection cross section, finely stranded, max.	1.5 mm <sup>2</sup>	Wire connection cross section, finely stranded, min.	0.13 mm <sup>2</sup>
Connection cross-section, stranded, max.	1.5 mm <sup>2</sup>	Connection cross-section, stranded, min.	0.13 mm <sup>2</sup>
Wire connection cross-section, solid core, max.	1.5 mm <sup>2</sup>	Wire connection cross-section, solid core, min.	0.13 mm <sup>2</sup>

**General**

Wire connection cross section AWG, max.	AWG 16	Wire connection cross section AWG, min.	AWG 24
Standards	IEC 60947-7-1	Mounting rail	TS 35 x 7.5

**Rating data**

Rated cross-section	1.5 mm <sup>2</sup>	Rated voltage	250 V
Rated DC voltage	250 V	Nominal current	17.5 A
Current at maximum wires	17.5 A	Standards	IEC 60947-7-1
Volume resistance according to IEC 60947-7-x	1.83 mΩ	Rated impulse withstand voltage	4 kV
Power loss in accordance with IEC 60947-7-x	0.56 W	Surge voltage category	III
Pollution severity	3		

**UL rating data**

Conductor size Factory wiring max. (cURus)	16 AWG	Voltage size B (cURus)	300 V
Voltage size D (cURus)	300 V	Certificate No. (cURus)	E60693
Conductor size Field wiring min. (cURus) 26 AWG		Conductor size Factory wiring min. (cURus)	26 AWG
Current size B (cURus)	10 A	Current size D (cURus)	10 A
Conductor size Field wiring max. (cURus) 16 AWG			

**Classifications**

ETIM 8.0	EC000897	ETIM 9.0	EC000897
ETIM 10.0	EC000897	ECLASS 14.0	27-25-01-19
ECLASS 15.0	27-25-01-19		

**Drawings**



## PPV 8 BL 35X7.5 DGR

**Weidmüller Interface GmbH & Co. KG**  
 Klingenbergstraße 26  
 D-32758 Detmold  
 Germany

www.weidmueller.com

## Accessories

### Cross-connection for socket with PUSH IN connection

Cross-connection for the sockets in the RIDERSERIES RCI.



#### General ordering data

Type	SRC-I QV P	Version	
Order No.	<a href="#">8870840000</a>	RIDERSERIES RCI, Cross-connector	
GTIN (EAN)	4032248631681		
Qty.	10 ST		

### Accessories



The comprehensive accessories of the Klippon® Connect portfolio are perfectly matched down to the last detail. This facilitates mounting while adhering to required norms

#### General ordering data

Type	PAP PRV/PPV8 BL	Version	
Order No.	<a href="#">1268000000</a>	P-series, End plate, blue, 3 mm	
GTIN (EAN)	4032248113040		
Qty.	10 ST		
Type	PAP PRV/PPV8 GR	Version	
Order No.	<a href="#">1211460000</a>	P-series, End plate, grey, 3 mm	
GTIN (EAN)	4032248113446		
Qty.	10 ST		
Type	PAP PRV/PPV8 SW	Version	
Order No.	<a href="#">1173720000</a>	P-series, End plate, black, 3 mm	
GTIN (EAN)	4032248966158		
Qty.	10 ST		
Type	TW PRV8	Version	
Order No.	<a href="#">1173670000</a>	P-series, Partition plate, grey, 2 mm, Unprinted	
GTIN (EAN)	4032248966141		
Qty.	10 ST		
Type	TW PRV8 0-7	Version	
Order No.	<a href="#">1230090000</a>	P-series, Partition plate, grey, 2 mm, Printed 0-7, horizontally	
GTIN (EAN)	4050118013917		
Qty.	10 ST		

## PPV 8 BL 35X7.5 DGR

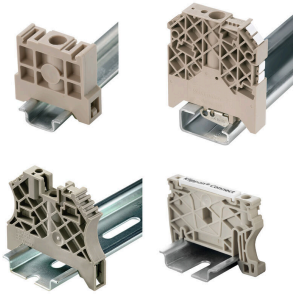
**Weidmüller Interface GmbH & Co. KG**  
 Klingenbergstraße 26  
 D-32758 Detmold  
 Germany

www.weidmueller.com

## Accessories

Type	TW PRV8 1-8	Version
Order No.	<a href="#">1230080000</a>	P-series, Partition plate, grey, 2 mm, Printed 1-8, horizontally
GTIN (EAN)	4050118013740	
Qty.	10 ST	
Type	TW PRV8 A-H	Version
Order No.	<a href="#">1230110000</a>	P-series, Partition plate, grey, 2 mm, Printed A-H, horizontally
GTIN (EAN)	4050118013900	
Qty.	10 ST	

## End bracket



Weidmüller's range of products includes end brackets that guarantee a permanent, reliable mounting on the terminal rail and prevent sliding. Versions with and without screws are available. The end brackets include marking options, also for group markers, and also a test plug holder.

## General ordering data

Type	ZEW 35/2 SW	Version
Order No.	<a href="#">1162610000</a>	End bracket, black, TS 35, V-2, Wemid, Width: 8 mm, 100 °C
GTIN (EAN)	4032248962716	
Qty.	20 ST	

## Accessories



The comprehensive accessories of the Klippon® Connect portfolio are perfectly matched down to the last detail. This facilitates mounting while adhering to required norms

## General ordering data

Type	BZT PRV8 BL 35X7.5	Version
Order No.	<a href="#">1267970000</a>	P-series, Marker holder, blue, Number of levels: 8, TS 35 x 7.5
GTIN (EAN)	4032248113293	
Qty.	20 ST	
Type	BZT PRV8 SW 35X7.5	Version
Order No.	<a href="#">1173580000</a>	P-series, Marker holder, black, Number of levels: 8, TS 35 x 7.5
GTIN (EAN)	4032248966110	
Qty.	20 ST	

## PPV 8 BL 35X7.5 DGR

Weidmüller Interface GmbH &amp; Co. KG

Klingenbergstraße 26

D-32758 Detmold

Germany

www.weidmueller.com

## Accessories

## Blank



WS markers are the perfect match for the W-series connectors. Thanks to their system compatibility, the WS tags can also be used with the I-series and the Z-series. The large marking surfaces do not only permit long character strings but also multi-line text. WS markers are ideal for labels with long, customised character strings. Thanks to the proven MultiCard format, printing with PrintJet CONNECT oder/or Plotter is possible.

- Can be fitted in strips or individually
- Markers in proven MultiCard format

For custom printing: Please send us a file of our labeling software M-Print PRO or M-Print PRO Online (without installation) for your labeling specifications.

## General ordering data

Type	WS 7.8/9.2 PLUS MC NE GR	Version
Order No.	<a href="#">1208970000</a>	WS, Terminal marker, 7.8 x 9.2 mm, Pitch in mm (P): 9.20
GTIN (EAN)	4032248990092	Weidmueller, grey
Qty.	360 ST	

## Marker holder



The marker holder offer the possibility of additional mounting of standard markers with a pitch of 5 or 5.1 mm. The angled holders can be optionally snapped together and could be mounted in all standard marking channels of the Klippon® Connect modular terminal blocks. Fitting marker types could be found under the respective accessories of the designation marking holder.

## General ordering data

Type	BZT 1 WS 10/5	Version
Order No.	<a href="#">1805490000</a>	Accessories, Marker holder
GTIN (EAN)	4032248270231	
Qty.	100 ST	
Type	BZT 1 ZA WS 10/5	Version
Order No.	<a href="#">1805520000</a>	Accessories, Marker holder
GTIN (EAN)	4032248270248	
Qty.	100 ST	

## PPV 8 BL 35X7.5 DGR

**Weidmüller Interface GmbH & Co. KG**  
Klingenbergstraße 26  
D-32758 Detmold  
Germany

[www.weidmueller.com](http://www.weidmueller.com)

## Accessories

### Slotted screwdriver



Slotted screwdriver with rounded blade SD DIN 5265, ISO 2380/2, output to DIN 5264, ISO 2380/1. ChromTop tip, SoftFinish grip

### General ordering data

Type	SDS 0.4X2.0X60	Version	
Order No.	<a href="#">2749260000</a>	Screwdriver, Blade width (B): 2 mm, Blade length: 60 mm, Blade thickness (A): 0.4 mm	
GTIN (EAN)	4050118895537		
Qty.	1 ST		