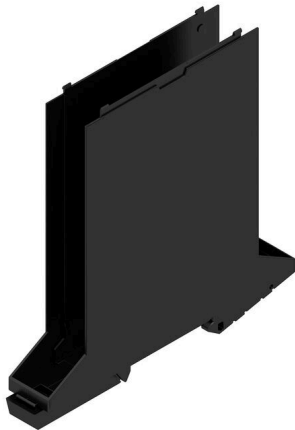


**CH20M17 B BK/BK 2010**

**Weidmüller Interface GmbH & Co. KG**  
Klingenbergstraße 26  
D-32758 Detmold  
Germany

[www.weidmueller.com](http://www.weidmueller.com)

**Product image**

The basic element of the modular CH20M housing offers a number of advantages that make it an excellent choice for your projects. With special cut-outs for bus and FE contacts, it is particularly flexible and adaptable.

Another plus point is the option of laser printing on the housing, which offers you high precision and individual design options. A wide range of colors is also available so that you can design the housing entirely according to your wishes.

The CH20M housing is also suitable for standard mounting rails, which makes installation and integration into existing systems easier.

**General ordering data**

|            |  |
|------------|--|
| Version    | Modular housing, OMNIMATE Housing - series CH20M black, Base element, Width: 17.5 mm |
| Order No.  | <a href="#">1254120000</a>   |
| Type       | CH20M17 B BK/BK 2010   |
| GTIN (EAN) | 4050118047035  |
| Qty.       | 12 items   |

## CH20M17 B BK/BK 2010

Weidmüller Interface GmbH & Co. KG  
Klingenbergstraße 26  
D-32758 Detmold  
Germany

www.weidmueller.com

## Technical data

## Approvals

|      |         |
|------|---------|
| ROHS | Conform |
|------|---------|

## Dimensions and weights

|            |          |                 |             |
|------------|----------|-----------------|-------------|
| Depth      | 108 mm   | Depth (inches)  | 4.252 inch  |
| Height     | 109.3 mm | Height (inches) | 4.3031 inch |
| Width      | 17.5 mm  | Width (inches)  | 0.689 inch  |
| Net weight | 29.86 g  |                 |             |

## Temperatures

|                     |   |                             |              |
|---------------------|---|-----------------------------|--------------|
| Ambient temperature | -25 °C...85 °C                                    | Operating temperature range | -40...120 °C |
| Humidity            | 5 - 93% rel. humidity, Tu = 40°C, no condensation |                             |              |

## Environmental Product Compliance

|                        |                             |
|------------------------|-----------------------------|
| RoHS Compliance Status | Compliant without exemption |
| REACH SVHC             | No SVHC above 0.1 wt%       |

## Material data

|                           |         |                                  |             |
|---------------------------|---------|----------------------------------|-------------|
| UL 94 flammability rating | V-0     | Insulating material              | PA 66 GF 30 |
| Insulating material group | I       | Surface finish                   | untreated   |
| Basic material            | Plastic | Comparative Tracking Index (CTI) | 600 ≤ CTI   |

## General data

|                      |       |                        |                         |
|----------------------|-------|------------------------|-------------------------|
| Colour               | black | Protection degree      | IP20 in installed state |
| Mounting rail        | TS 35 | Colour chart (similar) | RAL 9011                |
| Encapsulation option | No    |                        |                         |

## Assembly properties

|   |         |                             |              |
|---|---------|-----------------------------|--------------|
| Number of slots for female connectors of 6 the mounted assembly, max. |         | Number of PCBs, max.        | 1            |
| Number of connection levels, max.                                     | 3       | Number of poles, max.       | 18           |
| Height of components on the PCB, max.                                 | 11.1 mm | Type of assembly of the PCB | double-sided |

## Thermal tests

|               |                         |  |
|---------------|-------------------------|--|
| Thermal tests | Test conditions         | three housings installed in a row - no spacing |
|               | Test axles              | horizontal                                     |
|               | Ambient temperature     | 80 °C  |
|               | Power dissipation, max. | 0.9 W  |
|               | Ambient temperature     | 60 °C  |
|               | Power dissipation, max. | 1.7 W  |
|               | Ambient temperature     | 40 °C  |
|               | Power dissipation, max. | 2.45 W   |
|               | Ambient temperature     | 20 °C  |
|               | Power dissipation, max. | 3.2 W  |

## Component properties

|                       |       |                                   |   |
|-----------------------|-------|-----------------------------------|---|
| Color of clip-on foot | black | Number of connection levels, max. | 3 |
|-----------------------|-------|-----------------------------------|---|

**CH20M17 B BK/BK 2010**

**Weidmüller Interface GmbH & Co. KG**  
 Klingenbergstraße 26  
 D-32758 Detmold  
 Germany

www.weidmueller.com

**Technical data**

**Design - IN requirements**

|                                      |          |               |        |
|--------------------------------------|----------|---------------|--------|
| Tolerance for the PCB shape          | ±0.1 mm  | PCB thickness | 1.6 mm |
| Tolerance of circuit board thickness | ±0.15 mm |               |        |

**Individualization options**

|                                      |                 |                                 |                               |
|--------------------------------------|-----------------|---------------------------------|-------------------------------|
| Customer specific labelling possible | Yes             | Customer specific order process | See guideline under downloads |
| Alternative colours                  | More on request | Processing possibilities        | Laser processing              |

**Important note**

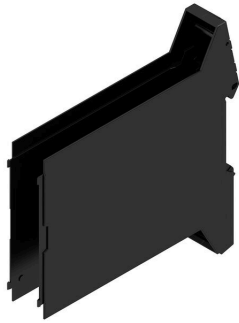
|                     |   |
|---------------------|---|
| Product information | Circuit board contour, restricted zones, and other information for the design in of the circuit board can be found in the category connection technology under the corresponding male headers in the downloads. |
|---------------------|---|

**Classifications**

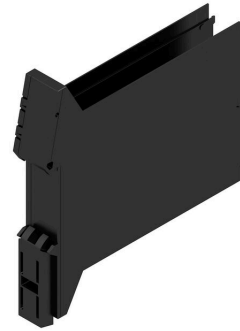
|             |             |             |             |
|-------------|-------------|-------------|-------------|
| ETIM 8.0    | EC001031    | ETIM 9.0    | EC001031    |
| ETIM 10.0   | EC001031    | ECLASS 14.0 | 27-19-06-01 |
| ECLASS 15.0 | 27-19-06-01 |             |             |

**Drawings**

**Product image**



**Product image**



Base element without cut-out in snap-in foot area

**Dimensioned drawing**

