

## KLBUE 3-8 FM4

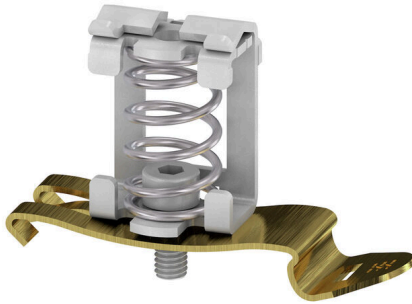
**Weidmüller Interface GmbH & Co. KG**

Klingenbergstraße 26

D-32758 Detmold

Germany

[www.weidmueller.com](http://www.weidmueller.com)



With our wide range of KLBÜ shield connections, you can achieve flexible and self-adjusting shield contacting and ensure error-free plant operation.

### General ordering data

Version	Clamping yoke, Clamping yoke for shield connection
Order No.	<a href="#">1252530000</a>
Type	KLBUE 3-8 FM4
GTIN (EAN)	4032248112531
Qty.	10 items

## KLBUE 3-8 FM4

Weidmüller Interface GmbH &amp; Co. KG

Klingenbergstraße 26

D-32758 Detmold

Germany

www.weidmueller.com

## Technical data

## Approvals

ROHS	Conform
------	---------

## Dimensions and weights

Depth	26 mm	Depth (inches)	1.0236 inch
Height	50 mm	Height (inches)	1.9685 inch
Width	14.5 mm	Width (inches)	0.5709 inch
Net weight	15.14 g		

## Temperatures

Storage temperature	-25 °C...55 °C	Ambient temperature	-5 °C...40 °C
Continuous operating temp., min.	-60 °C	Continuous operating temp., max.	130 °C

## Environmental Product Compliance

RoHS Compliance Status	Compliant without exemption		
REACH SVHC	No SVHC above 0.1 wt%		
Product Carbon Footprint	Cradle to gate	0.069 kg CO2 eq.	

## Material data

Colour	silver	UL 94 flammability rating	None
--------	--------	---------------------------	------

## System specifications

End cover plate required	No	Mounting rail	TS 35
--------------------------	----	---------------	-------

## Additional technical data

Installation advice	TS 35	Explosion-tested version	No
Type of mounting	Snap-on		

## Conductors for clamping (rated connection)

Stripping length	18 mm	Type of connection	Spring connection
Number of connections	1	Cable diameter, max.	8 mm
Cable diameter, min.	3 mm	Connection cross-section, stranded, max.	8 mm <sup>2</sup>
Connection cross-section, stranded, min. 3 mm <sup>2</sup>			

## General

Installation advice	TS 35	Mounting rail	TS 35
---------------------	-------	---------------	-------

## Rating data

Rated cross-section	8 mm <sup>2</sup>
---------------------	-------------------

## Classifications

ETIM 8.0	EC002020	ETIM 9.0	EC002020
ETIM 10.0	EC002020	ECLASS 14.0	27-25-01-20
ECLASS 15.0	27-25-01-20		