

## PTSI 4/LD 36V AC/DC

**Weidmüller Interface GmbH & Co. KG**

Klingenbergstraße 26

D-32758 Detmold

Germany

[www.weidmueller.com](http://www.weidmueller.com)



Power distribution using uncut cables with cross-sections from 1.5 to 6 mm<sup>2</sup>.

Power supply / T-branch tap via PUSH IN connection (0.5 to 10 mm<sup>2</sup>) and/or plug-in connection (0.5 to 4 mm<sup>2</sup>).

Coloured markings provide clear assignment of wires.

- Power supply
- Power distribution
- Power branching

### General ordering data

Version	Field Power® plug-in connector, Fuse, IP20, Polyamide, PUSH IN, Number of poles : 5
Order No.	<a href="#">1252210000</a>
Type	PTSI 4/LD 36V AC/DC
GTIN (EAN)	4050118044331
Qty.	1 items

## PTSI 4/LD 36V AC/DC

**Weidmüller Interface GmbH & Co. KG**  
 Klingenbergstraße 26  
 D-32758 Detmold  
 Germany

www.weidmueller.com

## Technical data

### Approvals

Approvals



ROHS	Conform
UL File Number Search	<a href="#">UL Website</a>
Certificate No. (cURus)	E60693

### Dimensions and weights

Depth	55 mm	Depth (inches)	2.1654 inch
Height	85 mm	Height (inches)	3.3464 inch
Width	57 mm	Width (inches)	2.2441 inch
Net weight	92 g		

### Temperatures

Storage temperature	-40 °C...85 °C	Operating temperature	-40 °C...55 °C
---------------------	----------------	-----------------------	----------------

### Environmental Product Compliance

RoHS Compliance Status	Compliant with exemption
RoHS Exemption (if applicable/known)	7cl
REACH SVHC	No SVHC above 0.1 wt%

### Clamping capacity, PUSH IN connection

Clamping range, max. PUSH IN connection	4 mm <sup>2</sup>	Clamping range, min. PUSH IN connection	0.5 mm <sup>2</sup>
Blade size, PUSH IN connection	3.0 x 0.5 mm	Stripping length, PUSH IN connection	12 mm
Finely-stranded flexible, max. PUSH IN connection	4.00 mm <sup>2</sup>	Finely-stranded flexible, min. PUSH IN connection	0.50 mm <sup>2</sup>
Cross-section for connected wire, flexible with wire-end ferrules, 12mm with plastic collar, DIN 46228/4, PUSH IN connection, min.	0.5 mm <sup>2</sup>	Cross-section for connected wire, flexible, PUSH IN connection, max.	4 mm <sup>2</sup>
Cross-section for connected wire, PUSH IN connection, solid, max.	4 mm <sup>2</sup>	Cross-section for connected wire, flexible with wire-end ferrules, 8mm with plastic collar, DIN 46228/1, PUSH IN connection, max.	4.00 mm <sup>2</sup>
Cross-section for connected wire, flexible, PUSH IN connection, min.	0.5 mm <sup>2</sup>	Cross-section for connected wire, flexible with wire-end ferrules, 12mm with plastic collar, DIN 46228/1, PUSH IN connection, max.	4.00 mm <sup>2</sup>
Cross-section for connected wire PUSH IN connection, solid, min.	0.5 mm <sup>2</sup>	Cross-section for connected wire, flexible with wire-end ferrules, 8mm with plastic collar, DIN 46228/1, PUSH IN connection, min.	0.50 mm <sup>2</sup>
Cross-section for connected wire, flexible with wire-end ferrules, 12mm with plastic collar, DIN 46228/4, PUSH IN connection, max.	4 mm <sup>2</sup>	Cross-section for connected wire, flexible with wire-end ferrules, 8mm with plastic collar, DIN 46228/4, PUSH IN connection, max.	4.00 mm <sup>2</sup>
Cross-section for connected wire, flexible with wire-end ferrules, 8mm with plastic collar, DIN 46228/4, PUSH IN connection, min.	0.50 mm <sup>2</sup>	Cross-section for connected wire, flexible with wire-end ferrules, 12mm with plastic collar, DIN 46228/1, PUSH IN connection, min.	0.50 mm <sup>2</sup>

## PTSI 4/LD 36V AC/DC

**Weidmüller Interface GmbH & Co. KG**

Klingenbergstraße 26  
D-32758 Detmold  
Germany

www.weidmueller.com

## Technical data

### Clamping capacity

Connection data - plug-in connector	Wire connection method	PUSH IN		
	Blade size of operating tool	3.0 x 0.5 mm		
	Stripping length	12.00 mm		
	Number of poles	5		
	Conductor connection cross-section, solid, max.	4 mm <sup>2</sup>		
	Conductor connection cross-section, solid, min.	0.50 mm <sup>2</sup>		
	Conductor connection cross-section, stranded, max.	4.00 mm <sup>2</sup>		
	Conductor connection cross-section, stranded, min.	0.50 mm <sup>2</sup>		
	Conductor connection cross-section, finely stranded, max.	4.00 mm <sup>2</sup>		
	Conductor connection cross-section, finely stranded, min.	0.50 mm <sup>2</sup>		
	Conductor connection cross-section, finest stranded, max.	4.00 mm <sup>2</sup>		
	Conductor connection cross-section, finest stranded, min.	0.50 mm <sup>2</sup>		
	Conductor connection cross-section with wire end ferrule	Type of wire end ferrule	12 mm with plastic collar	
		Standard	DIN 46228/1	
		Cross-section, min.	0.5 mm <sup>2</sup>	
		Cross-section, max.	4 mm <sup>2</sup>	
		Type of wire end ferrule	12 mm with plastic collar	
		Standard	DIN 46228/4	
		Cross-section, min.	0.5 mm <sup>2</sup>	
		Cross-section, max.	4 mm <sup>2</sup>	
		Type of wire end ferrule	8 mm with plastic collar	
		Standard	DIN 46228/1	
		Cross-section, min.	0.5 mm <sup>2</sup>	
Cross-section, max.		4 mm <sup>2</sup>		
Type of wire end ferrule	8 mm with plastic collar			
Standard	DIN 46228/4			
Cross-section, min.	0.5 mm <sup>2</sup>			
Cross-section, max.	4 mm <sup>2</sup>			
Type of wire end ferrule	Twin wire-end ferrules			
Cross-section, min.	0.5 mm <sup>2</sup>			
Cross-section, max.	4 mm <sup>2</sup>			

### General data

Insulating material	Polyamide	Silicone	No
Colour	black	Protection degree	IP20
UL 94 flammability rating	V-0	Type of mounting	Plugged
Function	Fuse	Can be coded	Yes, Coded on PE
Test point	2 mm	Number of poles	5
Number of connections / pole	1	Wire connection method	PUSH IN
Cartridge fuse	6.3 x 32 mm (1/4 x 1 1/4")	Conductor outlet direction	90°
Failure indicator	Red LED		

## PTSI 4/LD 36V AC/DC

**Weidmüller Interface GmbH & Co. KG**  
 Klingenbergstraße 26  
 D-32758 Detmold  
 Germany

[www.weidmueller.com](http://www.weidmueller.com)

## Technical data

### Rated data acc. to IEC

Rated data acc. to IEC for fuse plug	Voltage type	AC, DC
	Standard	IEC 61984, IEC 60947-7-3
	Rated voltage	36 V
	Rated impulse withstand voltage	6.00 kV
	Rated current	12 A

### Rated data acc. to UL

Rated data acc. to UL for fuse plug

### Classifications

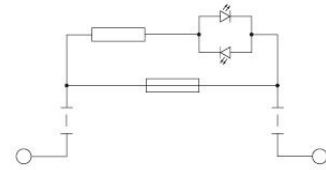
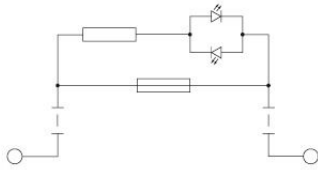
ETIM 8.0	EC002943	ETIM 9.0	EC002943
ETIM 10.0	EC002943	ECLASS 14.0	27-44-02-92
ECLASS 15.0	27-44-02-92		

**PTSI 4/LD 36V AC/DC**

**Weidmüller Interface GmbH & Co. KG**  
Klingenbergstraße 26  
D-32758 Detmold  
Germany

**Drawings**

[www.weidmueller.com](http://www.weidmueller.com)



**PTSI 4/LD 36V AC/DC**

**Weidmüller Interface GmbH & Co. KG**  
 Klingenbergstraße 26  
 D-32758 Detmold  
 Germany

www.weidmueller.com

**Accessories**

**Fuse**



As accessories for our wide product portfolio of fuse terminal blocks, we also offer the appropriate fuse links. The portfolio includes device protection fuses (miniature fuses) from 5x20 mm up to 10x38 mm, E 14 to E 18 fuse links, as well as automotive fuses and automatic circuit breakers. Gauge rings for the fuse holders round off the overall portfolio.

**General ordering data**

Type	GZ 12.5A/F	Version
Order No.	<a href="#">1460650000</a>	Miniature fuse, quick-acting, 12.5 A, G-Si. 6.3 x 32
GTIN (EAN)	4050118266627	
Qty.	10 ST	
Type	GZ 10.0A/F	Version
Order No.	<a href="#">1460640000</a>	Miniature fuse, quick-acting, 10 A, G-Si. 6.3 x 32
GTIN (EAN)	4050118266801	
Qty.	10 ST	
Type	GZ 7.0A/F	Version
Order No.	<a href="#">1460630000</a>	Miniature fuse, quick-acting, 7 A, G-Si. 6.3 x 32
GTIN (EAN)	4050118266726	
Qty.	10 ST	
Type	GZ 5.0A/F	Version
Order No.	<a href="#">1460620000</a>	Miniature fuse, quick-acting, 5 A, G-Si. 6.3 x 32
GTIN (EAN)	4050118266610	
Qty.	10 ST	
Type	GZ 3.0A/F	Version
Order No.	<a href="#">1460610000</a>	Miniature fuse, quick-acting, 3 A, G-Si. 6.3 x 32
GTIN (EAN)	4050118266702	
Qty.	10 ST	
Type	GZ 2.0A/F	Version
Order No.	<a href="#">1460600000</a>	Miniature fuse, quick-acting, 2 A, G-Si. 6.3 x 32
GTIN (EAN)	4050118266719	
Qty.	10 ST	
Type	GZ 1.0A/F	Version
Order No.	<a href="#">1460590000</a>	Miniature fuse, quick-acting, 1 A, G-Si. 6.3 x 32
GTIN (EAN)	4050118266634	
Qty.	10 ST	
Type	GZ 0.5A/F	Version
Order No.	<a href="#">1460580000</a>	Miniature fuse, quick-acting, 0.5 A, G-Si. 6.3 x 32
GTIN (EAN)	4050118266603	
Qty.	10 ST	

## PTSI 4/LD 36V AC/DC

**Weidmüller Interface GmbH & Co. KG**  
 Klingenbergstraße 26  
 D-32758 Detmold  
 Germany

## Accessories

www.weidmueller.com

## Tools



Sheathing stripper for PVC cables

## General ordering data

Type	AM 16	Version	
Order No.	<a href="#">9204190000</a>	Tools, Sheathing strippers	
GTIN (EAN)	4032248608133		
Qty.	1 ST		
Type	AM 25	Version	
Order No.	<a href="#">9001540000</a>	Tools, Sheathing strippers	
GTIN (EAN)	4008190138271		
Qty.	1 ST		

## Blank



WS markers are the perfect match for the W-series connectors. Thanks to their system compatibility, the WS tags can also be used with the I-series and the Z-series. The large marking surfaces do not only permit long character strings but also multi-line text. WS markers are ideal for labels with long, customised character strings. Thanks to the proven MultiCard format, printing with PrintJet CONNECT oder/or Plotter is possible.

- Can be fitted in strips or individually
- Markers in proven MultiCard format

For custom printing: Please send us a file of our labeling software M-Print PRO or M-Print PRO Online (without installation) for your labeling specifications.

## General ordering data

Type	WS 12/6 MC NE WS	Version	
Order No.	<a href="#">1609900000</a>	WS, Terminal marker, 12 x 6 mm, Pitch in mm (P): 6.00 Weidmueller,	
GTIN (EAN)	4008190203467	Allen-Bradley, white	
Qty.	600 ST		

## PTSI 4/LD 36V AC/DC

**Weidmüller Interface GmbH & Co. KG**  
Klingenbergstraße 26  
D-32758 Detmold  
Germany

[www.weidmueller.com](http://www.weidmueller.com)

## Accessories

### Slotted screwdriver



Slotted screwdriver with rounded blade SD DIN 5265, ISO 2380/2, output to DIN 5264, ISO 2380/1. ChromTop tip, SoftFinish grip

### General ordering data

Type	SDS 0.5X3.0X80	Version	
Order No.	<a href="#">2749330000</a>	Screwdriver, Blade width (B): 3 mm, Blade length: 80 mm, Blade thickness (A): 0.5 mm	
GTIN (EAN)	4050118895551		
Qty.	1 ST		