

SFX 9/40 S MC NE GE

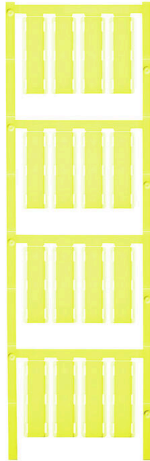
Weidmüller Interface GmbH & Co. KG

Klingenbergstraße 26

D-32758 Detmold

Germany

www.weidmueller.com



SlimFix X are halogen-free conductor and cable markers with a space-saving design. The markers can be fitted even after the conductor has been installed. SlimFix is an acknowledged and approved marker type in traffic engineering. The SF tool allows easy installation even in case of small markers.

- Halogen-free material
- Approved and accredited markers for traffic engineering applications, etc.
- Has to be fixed with cable ties if the conductor cross-section is larger than 16.0 mm²
- Markers in proven MultiCard format

For custom printing: Please send us a file of our labeling software M-Print PRO or M-Print PRO Online (without installation) for your labeling specifications.

General ordering data

Version	SlimFix X, Conductor and cable markers, 7 - 40 mm, 40 x 13.62 mm, yellow
Order No.	1248770000
Type	SFX 9/40 S MC NE GE
GTIN (EAN)	4050118039023
Qty.	80 items

SFX 9/40 S MC NE GE

Weidmüller Interface GmbH & Co. KG
 Klingenbergstraße 26
 D-32758 Detmold
 Germany

www.weidmueller.com

Technical data

Approvals

ROHS	Conform
------	---------

Dimensions and weights

Depth	1 mm	Depth (inches)	0.0394 inch
Height	40 mm	Height (inches)	1.5748 inch
Width	13.62 mm	Width (inches)	0.5362 inch
Net weight	1.51 g		

Temperatures

Operating temperature range	-40...100 °C
-----------------------------	--------------

Environmental Product Compliance

RoHS Compliance Status	Compliant without exemption	
REACH SVHC	No SVHC above 0.1 wt%	
Product Carbon Footprint	Cradle to gate	0.006 kg CO2 eq.

General data

Material colour according to resistance code	4	
Version	Installation with cable ties	
Width	13.62 mm	
UL 94 flammability rating	V-2	
Operating temperature range, max.	100 °C	
Operating temperature range, min.	-40 °C	
Colour	yellow	
Halogen	No	
Basic material	Polyamide 66	
Number of markers per packaging unit	Form of supply	MultiCard
Size of labelling field	40 x 8.5 mm	
Recommended industries compatible printer	Transportation, Machinery PRINTJET CONNECT , MCP BASIC 2 , MCP PLUS 2	
Number of markers per combination	1 MultiCard = Conductor and cable markers	
Operating temperature range	-40...100 °C	

Conductor and cable markers

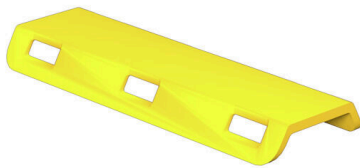
Halogen	No	Conductor cross-section, max.	500 mm ²
Conductor cross-section, min.	16 mm ²	Conductor O.D., max.	40 mm
Conductor O.D., min.	7 mm	Conductor O.D.	7 - 40 mm
Cross-section for connected wire	16 - 500 mm ²		

Classifications

ETIM 8.0	EC001530	ETIM 9.0	EC001530
ETIM 10.0	EC001530	ECLASS 14.0	27-28-11-02
ECLASS 15.0	27-28-11-02		

Drawings

Example of use



Similar to illustration

