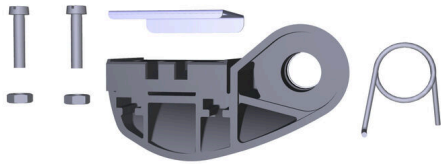


ERTE AN HTF SUB-D

Weidmüller Interface GmbH & Co. KG
Klingenbergstraße 26
D-32758 Detmold
Germany

www.weidmueller.com



Crimping tools for flat blade connectors and flat blade receptacles with open or rolled crimping claw

- Ratchet guarantees precise crimping
- Release option in the event of incorrect operation
- With end stop for exact positioning of the contacts

General ordering data

Version	Pressing tool, Replacement part
Order No.	1246760000
Type	ERTE AN HTF SUB-D
GTIN (EAN)	4050118034790
Qty.	1 items
Delivery status	Discontinued

ERTE AN HTF SUB-D

Weidmüller Interface GmbH & Co. KG
 Klingenbergstraße 26
 D-32758 Detmold
 Germany

www.weidmueller.com

Technical data

Dimensions and weights

Depth	40 mm	Depth (inches)	1.5748 inch
Height	60 mm	Height (inches)	2.3622 inch
Width	15 mm	Width (inches)	0.5906 inch
Net weight	25 g		

Environmental Product Compliance

RoHS Compliance Status	Not affected
REACH SVHC	Lead 7439-92-1
SCIP	6a3438d7-aa8c-48e4-8879-adf736ca79e3

Technical data

Version	Replacement part for crimping tool HTF SUB-D, stop
---------	--

Classifications

ETIM 8.0	EC002691	ETIM 9.0	EC002691
ETIM 10.0	EC002691	ECLASS 14.0	21-04-51-92
ECLASS 15.0	21-04-51-92		