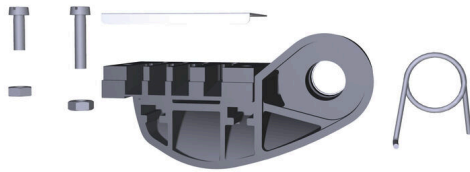


ERTE AN HTF RSV 16

Weidmüller Interface GmbH & Co. KG
Klingenbergstraße 26
D-32758 Detmold
Germany

www.weidmueller.com



Crimping tools for flat blade connectors and flat blade receptacles with open or rolled crimping claw

- Ratchet guarantees precise crimping
- Release option in the event of incorrect operation
- With end stop for exact positioning of the contacts

General ordering data

Version	Pressing tool, Replacement part
Order No.	1246750000
Type	ERTE AN HTF RSV 16
GTIN (EAN)	4050118034950
Qty.	1 items

ERTE AN HTF RSV 16

Weidmüller Interface GmbH & Co. KG
 Klingenbergstraße 26
 D-32758 Detmold
 Germany

www.weidmueller.com

Technical data

Dimensions and weights

Net weight	15 g
------------	------

Environmental Product Compliance

RoHS Compliance Status	Not affected
REACH SVHC	Lead 7439-92-1
SCIP	6a3438d7-aa8c-48e4-8879-adf736ca79e3

Technical data

Version	Replacement part for crimping tool HTF RSV 16, stop
---------	---

Classifications

ETIM 8.0	EC002691	ETIM 9.0	EC002691
ETIM 10.0	EC002691	ECLASS 14.0	21-04-51-92
ECLASS 15.0	21-04-51-92		