

ZDK 2.5/3AN BZT

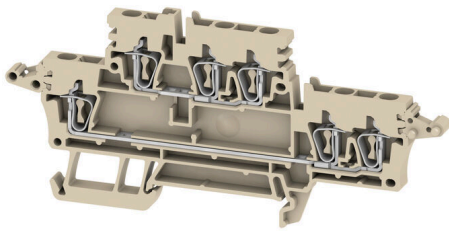
Weidmüller Interface GmbH & Co. KG

Klingenbergstraße 26

D-32758 Detmold

Germany

www.weidmueller.com



To feed through power, signal, and data is the classical requirement in electrical engineering and panel building. The insulating material, the connection system and the design of the terminal blocks are the differentiating features. A feed-through terminal block is suitable for joining and/or connecting one or more conductors. They could have one or more connection levels that are on the same potential or insulated against one another.

General ordering data

| | |
|------------|--|
| Version | Plug-in modular terminals, Tension-clamp connection, 2.5 mm ² , 800 V, 24 A, dark beige |
| Order No. | 1216470000 |
| Type | ZDK 2.5/3AN BZT |
| GTIN (EAN) | 4050118000436 |
| Qty. | 50 items |

ZDK 2.5/3AN BZT

Weidmüller Interface GmbH & Co. KG
 Klingenbergstraße 26
 D-32758 Detmold
 Germany

www.weidmueller.com

Technical data

Approvals

Approvals



ROHS Conform

Dimensions and weights

| | | | |
|--------------------------|-------------|----------------|-------------|
| Depth | 50.5 mm | Depth (inches) | 1.9882 inch |
| Depth including DIN rail | 51.5 mm | Height | 111 mm |
| Height (inches) | 4.3701 inch | Width | 5.1 mm |
| Width (inches) | 0.2008 inch | Net weight | 14.16 g |

Temperatures

| | | | |
|----------------------------------|----------------|----------------------------------|----------------|
| Storage temperature | -25 °C...55 °C | Ambient temperature | -50 °C...75 °C |
| Continuous operating temp., min. | -50 °C | Continuous operating temp., max. | 120 °C |

Environmental Product Compliance

| | |
|------------------------|-----------------------------|
| RoHS Compliance Status | Compliant without exemption |
| REACH SVHC | No SVHC above 0.1 wt% |

Material data

| | | | |
|---------------------------|-------|--------|------------|
| Basic material | Wemid | Colour | dark beige |
| UL 94 flammability rating | V-0 | | |

System specifications

| | | | |
|-------------------------------------|--|-----------------------------------|-------|
| Version | Tension-clamp connection, for plug-in cross-connector, One end without connector | End cover plate required | Yes |
| Number of potentials | 2 | Number of levels | 2 |
| Number of clamping points per level | 3 | Levels cross-connected internally | No |
| PE connection | No | Mounting rail | TS 35 |

Additional technical data

| | | | |
|--------------------------|----|------------------|---------|
| Explosion-tested version | No | Type of mounting | Snap-on |
|--------------------------|----|------------------|---------|

Conductors for clamping (additional connection)

Connection type, additional connection Tension-clamp connection

Conductors for clamping (rated connection)

| | | | |
|-----------------------|--------------------------|---|--------------------------|
| Gauge to IEC 60947-1 | A2 | Wire connection cross section AWG, max. | AWG 12 |
| Connection direction | top | Stripping length | 10 mm |
| Type of connection 2 | Tension-clamp connection | Type of connection | Tension-clamp connection |
| Number of connections | 6 | Clamping range, max. | 4 mm ² |

ZDK 2.5/3AN BZT

Weidmüller Interface GmbH & Co. KG

Klingenbergstraße 26
D-32758 Detmold
Germany

www.weidmueller.com

Technical data

| | | | |
|---|----------------------|---|----------------------|
| Clamping range, min. | 0.05 mm ² | Blade size | 0.6 x 3.5 mm |
| Wire connection cross section AWG, min. | AWG 30 | Wire connection cross-section, finely stranded with wire-end ferrules DIN 46228/4, max. | 2.5 mm ² |
| Wire connection cross-section, finely stranded with wire-end ferrules DIN 46228/4, min. | 0.05 mm ² | Wire connection cross-section, finely stranded with wire-end ferrules DIN 46228/1, max. | 2.5 mm ² |
| Wire connection cross-section, finely stranded with wire-end ferrules DIN 46228/1, min. | 0.05 mm ² | Wire connection cross section, finely stranded, max. | 2.5 mm ² |
| Wire connection cross section, finely stranded, min. | 0.05 mm ² | Connection cross-section, stranded, max. | 2.5 mm ² |
| Connection cross-section, stranded, min. | 0.05 mm ² | Wire connection cross-section, solid core, max. | 4 mm ² |
| Wire connection cross-section, solid core, min. | 0.05 mm ² | Connection cross-section, finely stranded, min. | 0.05 mm ² |

General

| | | | |
|---|---------------|---|--------|
| Wire connection cross section AWG, max. | AWG 12 | Wire connection cross section AWG, min. | AWG 30 |
| Standards | IEC 60947-7-1 | Mounting rail | TS 35 |

Rating data

| | | | |
|--|---------------------|---------------------------------|---------------|
| Rated cross-section | 2.5 mm ² | Rated voltage | 800 V |
| Rated DC voltage | 800 V | Nominal current | 24 A |
| Current at maximum wires | 24 A | Standards | IEC 60947-7-1 |
| Volume resistance according to IEC 60947-7-x | 1.33 mΩ | Rated impulse withstand voltage | 8 kV |
| Power loss in accordance with IEC 60947-7-x | 0.77 W | Pollution severity | 3 |

Classifications

| | | | |
|-------------|-------------|-------------|-------------|
| ETIM 8.0 | EC000897 | ETIM 9.0 | EC000897 |
| ETIM 10.0 | EC000897 | ECLASS 14.0 | 27-25-01-02 |
| ECLASS 15.0 | 27-25-01-02 | | |

Drawings

