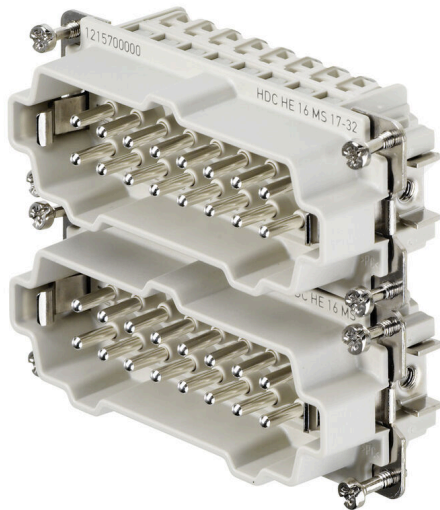


HDC HE 16 MS 17-32

Weidmüller Interface GmbH & Co. KG
Klingenbergstraße 26
D-32758 Detmold
Germany

www.weidmueller.com



For the screw connection, the wire connection level is designed as a screw element. All screw connection elements are equipped with wire protection (with the exception of size 1).

General ordering data

Version	HDC insert, Male, 500 V, 16 A, Number of poles: 16, Screw connection, Installation size: 6
Order No.	1215700000
Type	HDC HE 16 MS 17-32
GTIN (EAN)	4008190056360
Qty.	1 items

HDC HE 16 MS 17-32

Weidmüller Interface GmbH & Co. KG
 Klingenbergstraße 26
 D-32758 Detmold
 Germany

www.weidmueller.com

Technical data

Approvals

Approvals



ROHS	Conform
UL File Number Search	UL Website
Certificate No. (cURus)	E92202

Dimensions and weights

Depth	84.5 mm	Depth (inches)	3.3268 inch
Height	35.7 mm	Height (inches)	1.4055 inch
Width	34 mm	Width (inches)	1.3386 inch
Net weight	82.72 g		

Temperatures

Limit temperature	-40 °C ... 125 °C
-------------------	-------------------

Environmental Product Compliance

RoHS Compliance Status	Compliant with exemption
RoHS Exemption (if applicable/known)	6c
REACH SVHC	Lead 7439-92-1, Potassium perfluorobutane sulfonate 29420-49-3
SCIP	e98b2b24-ba23-41bf-8d19-Odda3647412f

Chemical resistance	Substance	Acetone
	Chemical resistance	Resistant
	Substance	Ammonia, watery
	Chemical resistance	Conditionally resistant
	Substance	Petrol
	Chemical resistance	Resistant
	Substance	Benzene
	Chemical resistance	Resistant
	Substance	Diesel oil
	Chemical resistance	Conditionally resistant
	Substance	Acetic acid, concentrated
	Chemical resistance	Resistant
	Substance	Potassium hydroxide
	Chemical resistance	Conditionally resistant
	Substance	Methanol
	Chemical resistance	Conditionally resistant
	Substance	Motor oil
	Chemical resistance	Conditionally resistant
	Substance	Lye, diluted
	Chemical resistance	Resistant
Substance	Hydrochlorofluorocarbons	
Chemical resistance	Conditionally resistant	
Substance	Outdoor use	
Chemical resistance	Conditionally resistant	

Dimensions

Width	34 mm	Total length base	84.5 mm
Height of plug	35.7 mm		

HDC HE 16 MS 17-32

Weidmüller Interface GmbH & Co. KG

Klingenbergstraße 26
D-32758 Detmold
Germany

www.weidmueller.com

Technical data

General data

Number of poles	16			
Plugging cycles, silver	≥ 500			
Plugging cycles, gold	≥ 500			
Type of connection	Screw connection			
Installation size	6			
UL 94 flammability rating	V-0			
Volume resistance	≤2 mΩ			
Colour	beige			
Insulation resistance	1010 Ω			
Insulating material	PC glass-fibre reinforced (UL-listed and railway-certified)			
Insulating material group	IIIa			
Conductor cross-section	2.5 mm ²			
Tightening torque, max. PE connection	1.5 Nm			
Surface finish	Silver passivated			
Max. torque for main contact	0.7 Nm			
Type	Male			
Pollution severity	3			
Tightening torque, min. PE connection	1.2 Nm			
Basic material	Copper alloy			
Min. torque for main contact	0.6 Nm			
Series	HE			
Rated voltage (DIN EN 61984)	500 V			
Rated voltage according to UL/CSA	600 V AC/DC			
Rated impulse voltage (DIN EN 61984)	6 kV			
Rated current (DIN EN 61984)	16 A			
Rated current (UR)	Wire connection cross section AWG	AWG 12		
	Rated current	20 A		
	Wire connection cross section AWG	AWG 14		
	Rated current	15 A		
	Wire connection cross section AWG	AWG 16		
	Rated current	10 A		
	Wire connection cross section AWG	AWG 18		
	Rated current	7 A		
	Wire connection cross section AWG	AWG 20		
	Rated current	5 A		
	Rated current (cUR)	Wire connection cross section AWG	AWG 12	
		Rated current	19.7 A	
Wire connection cross section AWG		AWG 14		
Rated current		15 A		
Wire connection cross section AWG		AWG 16		
Rated current		11.3 A		
Wire connection cross section AWG		AWG 18		
Rated current		10.3 A		
Wire connection cross section AWG		AWG 20		
Rated current		8 A		
Free from halogens		true		
Low smoke acc. DIN EN 45545-2		Yes		
BG	6			
Number of signal contacts	0			
Number of power contacts	16			

Connection data PE

Connection type PE	Screw connection	Blade size, slotted (PE connection)	SD 0.8 x 4.0
Stripping length PE connection	10 mm	Tightening torque, max. PE connection	1.5 Nm

HDC HE 16 MS 17-32

Weidmüller Interface GmbH & Co. KG
 Klingenbergstraße 26
 D-32758 Detmold
 Germany

www.weidmueller.com

Technical data

Tightening torque, min. PE connection	1.2 Nm	Fixing screw	M 4
Rated cross-section	4 mm ²	Wire cross section, AWG (PE), min.	AWG 20
Wire cross section, AWG (PE), max.	AWG 12		

Power contact

Tightening torque, max.	0.7 Nm	Tightening torque, min.	0.6 Nm
-------------------------	--------	-------------------------	--------

Signal contact

Tightening torque, max.	0.7 Nm	Tightening torque, min.	0.6 Nm
-------------------------	--------	-------------------------	--------

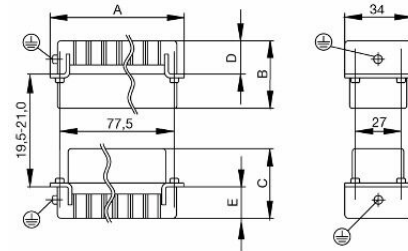
Version

Blade size, slotted (screw connection)	SD 0.6 x 3.5	Wire connection cross section AWG, max.	AWG 14
Stripping length, rated connection	9 mm	Type of connection	Screw connection
Installation size	6	Volume resistance	≤2 mΩ
Clamping screw	M 3	Blade size	size PH1
Wire connection cross section AWG, min.	AWG 20	Wire cross-section, solid, max.	2.5 mm ²
Wire cross-section, solid, min.	0.5 mm ²	Wire connection cross-section, finely stranded with wire-end ferrules DIN 46228/4, max.	2.5 mm ²
Wire connection cross section, finely stranded, max.	2.5 mm ²	Wire connection cross section, finely stranded, min.	0.5 mm ²
Conductor cross-section, max.	2.5 mm ²	Conductor cross-section, min.	0.5 mm ²
Surface finish	Silver passivated	Max. torque for main contact	0.7 Nm
Basic material	Copper alloy	Min. torque for main contact	0.6 Nm
BG	6		

Classifications

ETIM 8.0	EC000438	ETIM 9.0	EC000438
ETIM 10.0	EC000438	ECLASS 14.0	27-44-02-05
ECLASS 15.0	27-44-02-05		

Drawings



HDC HE 16 MS 17-32

Weidmüller Interface GmbH & Co. KG
 Klingenbergstraße 26
 D-32758 Detmold
 Germany

www.weidmueller.com

Accessories

Slotted screwdriver



VDE insulated slot-head screwdriver, SDI DIN 7437, ISO 2380/2, drive output acc. to DIN 5264, ISO 2380/1. SoftFinish grip

General ordering data

Type	SDIS 0.6X3.5X100	Version
Order No.	9008390000	Screwdriver, Screwdriver
GTIN (EAN)	4032248056354	
Qty.	1 ST	
Type	SDS 0.6X3.5X100	Version
Order No.	9008330000	Screwdriver, Screwdriver
GTIN (EAN)	4032248056286	
Qty.	1 ST	
Type	SDIS 0.8X4.0X100	Version
Order No.	9008400000	Screwdriver, Screwdriver
GTIN (EAN)	4032248056361	
Qty.	1 ST	
Type	SDS 0.8X4.0X100	Version
Order No.	9008340000	Screwdriver, Screwdriver
GTIN (EAN)	4032248056293	
Qty.	1 ST	

Crosshead screwdriver Phillips



VDE insulated crosshead screwdriver, for Phillips screws, SDIK PH DIN 7438, ISO 8764/2-PH, output to ISO 8764-PH, SoftFinish grip

General ordering data

Type	SDIK PH1	Version
Order No.	9008570000	Screwdriver, Screwdriver
GTIN (EAN)	4032248056569	
Qty.	1 ST	
Type	SDK PH1	Version
Order No.	9008480000	Screwdriver, Screwdriver
GTIN (EAN)	4032248056477	
Qty.	1 ST	

HDC HE 16 MS 17-32

Weidmüller Interface GmbH & Co. KG
Klingenbergstraße 26
D-32758 Detmold
Germany

Accessories

www.weidmueller.com

DSTV

Various accessories are available for our inserts. This includes coding elements for the inserts.

General ordering data

Type	DSTV COBU5	Version	
Order No.	1471500000	Heavy-duty connectors, Accessories, Coding element	
GTIN (EAN)	4008190178543		
Qty.	100 ST		
Type	DSTV COST4	Version	
Order No.	1471300000	Heavy-duty connectors, Accessories, Coding System	
GTIN (EAN)	4008190017354		
Qty.	100 ST		