

## HDC 24B ADBO

**Weidmüller Interface GmbH & Co. KG**

Klingenbergstraße 26

D-32758 Detmold

Germany

[www.weidmueller.com](http://www.weidmueller.com)



The special die-cast alloy and the multi-layered surface sealing provide complete protection for the HDC housings.

The cleverly designed interlock system is manufactured from stainless steel. This guarantees a long lifespan with high resistance to corrosion and impact.

The housing interlock system provides integrated safety. Our unique, patented spring system provides the housing interlock with a secure grip and prevents accidental opening.

The laser marking allows for easy and quick identification. Each housing is permanently labelled with a laser marking so that each product can be quickly designated and positioned.

Weidmüller RockStar® IP 65 / NEMA Type 4X housings - your first choice for industrial housings with IP 65 protection.

### General ordering data

Version	HDC enclosures, Installation size: 8, Protection degree: IP65, in plugged condition, Bulkhead housing, Side-locking clamp on upper side, Standard, with cover, Size of cable entries: none
Order No.	<a href="#">1213300000</a>
Type	HDC 24B ADBO
GTIN (EAN)	4008190871147
Qty.	1 items

**HDC 24B ADBO**

**Weidmüller Interface GmbH & Co. KG**  
 Klingenbergstraße 26  
 D-32758 Detmold  
 Germany

www.weidmueller.com

**Technical data**

**Approvals**

Approvals



ROHS	Conform
UL File Number Search	<a href="#">UL Website</a>
Certificate No. (cURus)	E92202

**Dimensions and weights**

Height	51.3 mm	Height (inches)	2.0197 inch
Width	71.6 mm	Width (inches)	2.8189 inch
Mounting dimension - height	32 mm	Mounting dimension - width	130 mm
Net weight	209 g		

**Temperatures**

Limit temperature	-40 °C ... 125 °C
-------------------	-------------------

**Environmental Product Compliance**

RoHS Compliance Status	Compliant without exemption
REACH SVHC	Potassium perfluorobutane sulfonate 29420-49-3
SCIP	e98b2b24-ba23-41bf-8d19-0dda3647412f

Chemical resistance	Substance	Acetone
	Chemical resistance	Conditionally resistant
	Substance	Drilling oil
	Chemical resistance	Resistant
	Substance	Diesel
	Chemical resistance	Resistant
	Substance	Ethyl alcohol
	Chemical resistance	Resistant
	Substance	Transmission oil
	Chemical resistance	Resistant
	Substance	Hydraulic oil
	Chemical resistance	Resistant
	Substance	Coolant
	Chemical resistance	Resistant
	Substance	Petroleum benzene
	Chemical resistance	Resistant
	Substance	Sweat
	Chemical resistance	Resistant
	Substance	Premium gasoline
	Chemical resistance	Conditionally resistant
Substance	Water	
Chemical resistance	Resistant	
Substance	UV	
Chemical resistance	Unstable	
Substance	Ozone	
Chemical resistance	Unstable	

**Dimensions**

Hole pitch length A2	130 mm	Cable entry	No
Width housing C	43 mm	Width base C1	47 mm

## HDC 24B ADBO

**Weidmüller Interface GmbH & Co. KG**  
 Klingenbergstraße 26  
 D-32758 Detmold  
 Germany

www.weidmueller.com

## Technical data

Total length housing	120 mm	Height of housing B	29 mm
Height of base B1	5.3 mm		

### General data

Housing main material	diecast aluminium	Surface finish	Powder coating
Protection degree	IP65, in plugged condition	Protection class note	Protection class for this version of cover: IP20
EMC housings	No	Material of locking element	Stainless steel, rust-proof

### Version

Number of cable glands	0	Size of cable entries	none
Top part/bottom part/lid	lower part	Cover	without cover
Number of cable entry sideways	0	Design of cover	with cover
Design of housing	Bulkhead housing	Design of locking system	Side-locking clamp on upper side
Design	Standard	Installation size	8
Cable entry	No	Type	Bulkhead (feed-through)
Clamp version	Side-locking clamp	Sealing	NBR
Colour (RAL)	RAL 7035	BG	8
Suitable for ModuPlug®	Yes		

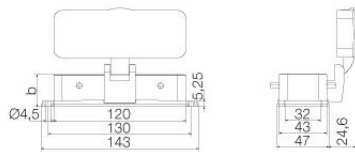
### Important note

Product information	When mounting the housings, make sure that the flat gasket is correctly seated.
---------------------	---

### Classifications

ETIM 8.0	EC000437	ETIM 9.0	EC000437
ETIM 10.0	EC000437	ECLASS 14.0	27-44-02-02
ECLASS 15.0	27-44-02-02		

Drawings



## HDC 24B ADBO

**Weidmüller Interface GmbH & Co. KG**  
 Klingenbergstraße 26  
 D-32758 Detmold  
 Germany

www.weidmueller.com

## Accessories

## Hood, Cable Entry at top



The special die-cast alloy and the multi-layered surface sealing provide complete protection for the HDC housings.

The cleverly designed interlock system is manufactured from stainless steel. This guarantees a long lifespan with high resistance to corrosion and impact.

The housing interlock system provides integrated safety. Our unique, patented spring system provides the housing interlock with a secure grip and prevents accidental opening.

The laser marking allows for easy and quick identification. Each housing is permanently labelled with a laser marking so that each product can be quickly designated and positioned.

Weidmüller RockStar® IP 65 / NEMA Type 4X housings - your first choice for industrial housings with IP 65 protection.

## General ordering data

Type	HDC 24B TOBO 1M32G	Version
Order No.	<a href="#">1787830000</a>	HDC enclosures, Installation size: 8, Protection degree: IP65, in
GTIN (EAN)	4032248205271	plugged condition, Cable entry from top, Plug housing, Side-locking
Qty.	1 ST	clamp on upper side, Standard, Size of cable entries: M 32
Type	HDC 24B TOBO 1PG29G	Version
Order No.	<a href="#">1662020000</a>	HDC enclosures, Installation size: 8, Protection degree: IP65, in
GTIN (EAN)	4008190418540	plugged condition, Cable entry from top, Plug housing, Side-locking
Qty.	1 ST	clamp on upper side, Standard, Size of cable entries: PG 29
Type	HDC 64D TOBO 1PG21G	Version
Order No.	<a href="#">1662080000</a>	HDC enclosures, Installation size: 8, Protection degree: IP65, in
GTIN (EAN)	4008190418601	plugged condition, Cable entry from top, Plug housing, Side-locking
Qty.	1 ST	clamp on upper side, high, Size of cable entries: PG 21
Type	HDC 64D TOBO 1PG29G	Version
Order No.	<a href="#">1662100000</a>	HDC enclosures, Installation size: 8, Protection degree: IP65, in
GTIN (EAN)	4008190418625	plugged condition, Cable entry from top, Plug housing, Side-locking
Qty.	1 ST	clamp on upper side, high, Size of cable entries: PG 29

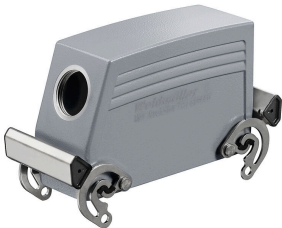
## HDC 24B ADBO

**Weidmüller Interface GmbH & Co. KG**  
 Klingenbergstraße 26  
 D-32758 Detmold  
 Germany

www.weidmueller.com

## Accessories

### Hood, Cable Entry sideways



The special die-cast alloy and the multi-layered surface sealing provide complete protection for the HDC housings.

The cleverly designed interlock system is manufactured from stainless steel. This guarantees a long lifespan with high resistance to corrosion and impact.

The housing interlock system provides integrated safety. Our unique, patented spring system provides the housing interlock with a secure grip and prevents accidental opening.

The laser marking allows for easy and quick identification. Each housing is permanently labelled with a laser marking so that each product can be quickly designated and positioned.

Weidmüller RockStar® IP 65 / NEMA Type 4X housings - your first choice for industrial housings with IP 65 protection.

### General ordering data

Type	HDC 24B TSBO 1M25G	Version
Order No.	<a href="#">1787780000</a>	HDC enclosures, Installation size: 8, Protection degree: IP65, in plugged condition, Cable entry from side, Plug housing, Side-locking clamp on upper side, Standard, Size of cable entries: M 25
GTIN (EAN)	4032248205226	
Qty.	1 ST	
Type	HDC 24B TSBO 1M32G	Version
Order No.	<a href="#">1787770000</a>	HDC enclosures, Installation size: 8, Protection degree: IP65, in plugged condition, Cable entry from side, Plug housing, Side-locking clamp on upper side, Standard, Size of cable entries: M 32
GTIN (EAN)	4032248205219	
Qty.	1 ST	
Type	HDC 24B TSBO 1PG21G	Version
Order No.	<a href="#">1661860000</a>	HDC enclosures, Installation size: 8, Protection degree: IP65, in plugged condition, Cable entry from side, Plug housing, Side-locking clamp on upper side, Standard, Size of cable entries: PG 21
GTIN (EAN)	4008190418397	
Qty.	1 ST	
Type	HDC 24B TSBO 1PG29G	Version
Order No.	<a href="#">1661880000</a>	HDC enclosures, Installation size: 8, Protection degree: IP65, in plugged condition, Cable entry from side, Plug housing, Side-locking clamp on upper side, Standard, Size of cable entries: PG 29
GTIN (EAN)	4008190418410	
Qty.	1 ST	
Type	HDC 64D TSBO 1M25G	Version
Order No.	<a href="#">1786800000</a>	HDC enclosures, Installation size: 8, Protection degree: IP65, in plugged condition, Cable entry from side, Plug housing, Side-locking clamp on upper side, high, Size of cable entries: M 25
GTIN (EAN)	4032248204045	
Qty.	1 ST	
Type	HDC 64D TSBO 1M32G	Version
Order No.	<a href="#">1786790000</a>	HDC enclosures, Installation size: 8, Protection degree: IP65, in plugged condition, Cable entry from side, Plug housing, Side-locking clamp on upper side, high, Size of cable entries: M 32
GTIN (EAN)	4032248204038	
Qty.	1 ST	
Type	HDC 64D TSBO 1PG21G	Version
Order No.	<a href="#">1661940000</a>	HDC enclosures, Installation size: 8, Protection degree: IP65, in plugged condition, Cable entry from side, Plug housing, Side-locking clamp on upper side, high, Size of cable entries: PG 21
GTIN (EAN)	4008190418472	
Qty.	1 ST	
Type	HDC 64D TSBO 1PG29G	Version
Order No.	<a href="#">1661960000</a>	HDC enclosures, Installation size: 8, Protection degree: IP65, in plugged condition, Cable entry from side, Plug housing, Side-locking clamp on upper side, high, Size of cable entries: PG 29
GTIN (EAN)	4008190418496	
Qty.	1 ST	