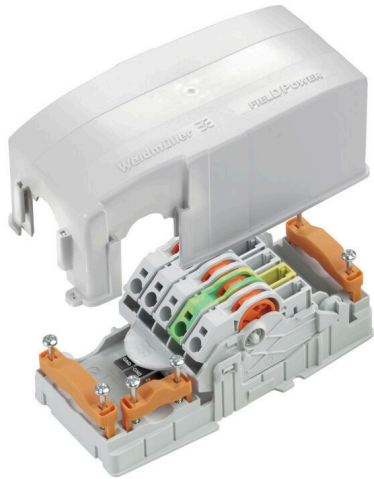


FP TERMINAL LG MPB

Weidmüller Interface GmbH & Co. KG
Klingenbergstraße 26
D-32758 Detmold
Germany

www.weidmueller.com



The FieldPower® power distributors support error-free installation in an extremely short space of time. Branches and functions integrated in the cover can simply be plugged in. Robust with high protection degree.

General ordering data

| | |
|------------|--|
| Version | FieldPower® Box, AC, IP20, in complete state, Polycarbonate, Insulation displacement connection (IDC), PUSH IN, Distribution |
| Order No. | 1206530000 |
| Type | FP TERMINAL LG MPB |
| GTIN (EAN) | 4032248988150 |
| Qty. | 1 items |

FP TERMINAL LG MPB

Weidmüller Interface GmbH & Co. KG
 Klingenbergstraße 26
 D-32758 Detmold
 Germany

www.weidmueller.com

Technical data

Approvals

ROHS Conform

Dimensions and weights

| | | | |
|------------|---------|-----------------|-------------|
| Depth | 59 mm | Depth (inches) | 2.3228 inch |
| Height | 159 mm | Height (inches) | 6.2598 inch |
| Width | 75 mm | Width (inches) | 2.9527 inch |
| Net weight | 250.8 g | | |

Temperatures

Storage temperature -40 °C...85 °C Operating temperature -40 °C...55 °C

Environmental Product Compliance

RoHS Compliance Status Compliant without exemption
 REACH SVHC No SVHC above 0.1 wt%

Clamping capacity

| | | | | |
|---|---|----------------------------------|---------------------------|--|
| Connection data - contact element Branch / Feed-in | Wire connection method | PUSH IN | | |
| | Blade size of operating tool | 0.6 x 3.5 mm | | |
| | Stripping length | 14.00 mm | | |
| | Number of poles | 5 | | |
| | Conductor connection cross-section, solid, max. | 6 mm ² | | |
| | Conductor connection cross-section, solid, min. | 0.50 mm ² | | |
| | Conductor connection cross-section, stranded, max. | 6.00 mm ² | | |
| | Conductor connection cross-section, stranded, min. | 0.50 mm ² | | |
| | Conductor connection cross-section, finely stranded, max. | 10.00 mm ² | | |
| | Conductor connection cross-section, finely stranded, min. | 0.50 mm ² | | |
| | Conductor connection cross-section, finest stranded, max. | 6.00 mm ² | | |
| | Conductor connection cross-section, finest stranded, min. | 0.50 mm ² | | |
| | Conductor connection cross-section with wire end ferrule | Type of wire end ferrule | 12 mm with plastic collar | |
| | | Standard | DIN 46228/1 | |
| | | Cross-section, min. | 0.5 mm ² | |
| | | Cross-section, max. | 6 mm ² | |
| | | Type of wire end ferrule | 12 mm with plastic collar | |
| | | Standard | DIN 46228/4 | |
| | | Cross-section, min. | 0.5 mm ² | |
| | | Cross-section, max. | 6 mm ² | |
| Type of wire end ferrule | | 8 mm with plastic collar ferrule | | |
| Standard | | DIN 46228/1 | | |
| Cross-section, min. | | 0.5 mm ² | | |
| Cross-section, max. | | 6 mm ² | | |
| Type of wire end ferrule | 8 mm with plastic collar ferrule | | | |
| Standard | DIN 46228/4 | | | |
| Cross-section, min. | 0.5 mm ² | | | |

FP TERMINAL LG MPB

Weidmüller Interface GmbH & Co. KG
 Klingenbergstraße 26
 D-32758 Detmold
 Germany

www.weidmueller.com

Technical data

| | | | |
|---|---|--|------------------------|
| | | Cross-section, max. | 6 mm ² |
| | | Type of wire end ferrule | Twin wire-end ferrules |
| | | Cross-section, min. | 0.5 mm ² |
| | | Cross-section, max. | 6 mm ² |
| Connection data - contact element power bus | Wire connection method | Insulation displacement connection (IDC) | |
| | Blade size of operating tool | 0.6 x 3.5 mm | |
| | Number of poles | 5 | |
| | Conductor connection cross-section, solid, max. | 6 mm ² | |
| | Conductor connection cross-section, solid, min. | 1.50 mm ² | |
| | Conductor connection cross-section, stranded, max. | 6.00 mm ² | |
| | Conductor connection cross-section, stranded, min. | 2.50 mm ² | |
| | Conductor connection cross-section, finely stranded, max. | 6.00 mm ² | |
| | Conductor connection cross-section, finely stranded, min. | 2.50 mm ² | |
| | Conductor connection cross-section, finest stranded, max. | 6.00 mm ² | |
| Conductor connection cross-section, finest stranded, min. | 2.50 mm ² | | |

General data

| | | | |
|------------------------------|---------------|------------------------|---|
| Basic material | Polycarbonate | Insulating material | Polycarbonate |
| Enclosure material | Polycarbonate | Silicone | No |
| Colour | beige | Protection degree | IP20, in complete state |
| UL 94 flammability rating | V-0 | Lid attachment | plugged |
| lockable | No | Type of mounting | Screw mounting |
| Function | Distribution | Can be coded | Yes |
| Voltage type | AC | Number of poles | 5 |
| Number of connections / pole | 1 | Wire connection method | Insulation displacement connection (IDC), PUSH IN |

Rated data acc. to IEC

| | | |
|--|---------------------------------|------------------------------|
| Rated data acc. to IEC for contact element | Standard | IEC 60947-7-1, IEC 60947-7-2 |
| | Rated voltage | 800 V |
| | Rated impulse withstand voltage | 8.00 kV |
| | Rated current (3 loaded poles) | 41 A |
| | Rated current (4 loaded poles) | 25 A |

Rated data acc. to UL

| | | |
|---|---|-------------------------------------|
| Standards | not UL approved | |
| Rated data acc. to UL for contact element | Standard | UL 1059 |
| | Note | for use with UL-listed TC-ER cables |
| | Conductor connection cross-section, AWG, max. | AWG 10 |
| | Conductor connection cross-section, AWG, min. | AWG 14 |
| | Rated voltage | 600 V |
| | Rated current | 30 A |

Classifications

| | | | |
|-------------|-------------|-------------|-------------|
| ETIM 8.0 | EC000214 | ETIM 9.0 | EC000214 |
| ETIM 10.0 | EC000214 | ECLASS 14.0 | 27-14-24-09 |
| ECLASS 15.0 | 27-14-24-09 | | |

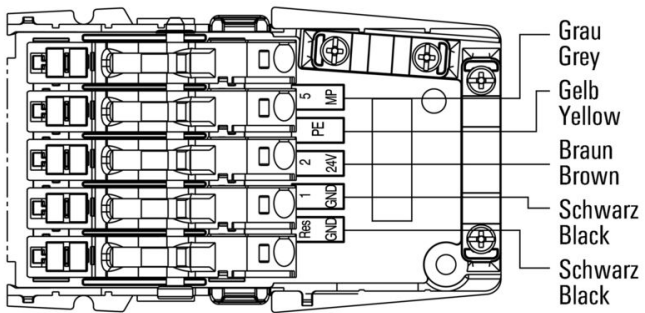
FP TERMINAL LG MPB

Weidmüller Interface GmbH & Co. KG
Klingenbergstraße 26
D-32758 Detmold
Germany

Drawings

www.weidmueller.com

PTB



FP TERMINAL LG MPB

Weidmüller Interface GmbH & Co. KG
 Klingenbergstraße 26
 D-32758 Detmold
 Germany

www.weidmueller.com

Accessories

Plug-in connector



Power distribution using uncut cables with cross-sections from 1.5 to 6 mm².

Power supply / T-branch tap via PUSH IN connection (0.5 to 10 mm²) and/or plug-in connection (0.5 to 4 mm²).

Coloured markings provide clear assignment of wires.

- Power supply
- Power distribution
- Power branching

General ordering data

| | | | |
|------------|----------------------------|--|--|
| Type | PTS 4 MPB | Version | |
| Order No. | 1010910000 | Field Power® plug-in connector, IP20, Polyamide, PUSH IN, Number | |
| GTIN (EAN) | 4032248717330 | of poles : 5 | |
| Qty. | 10 ST | | |

Tools



Sheathing stripper for PVC cables

General ordering data

| | | | |
|------------|----------------------------|----------------------------|--|
| Type | AM 16 | Version | |
| Order No. | 9204190000 | Tools, Sheathing strippers | |
| GTIN (EAN) | 4032248608133 | | |
| Qty. | 1 ST | | |
| Type | AM 25 | Version | |
| Order No. | 9001540000 | Tools, Sheathing strippers | |
| GTIN (EAN) | 4008190138271 | | |
| Qty. | 1 ST | | |

Slotted screwdriver



Slotted screwdriver with rounded blade SD DIN 5265, ISO 2380/2, output to DIN 5264, ISO 2380/1. ChromTop tip, SoftFinish grip

FP TERMINAL LG MPB

Weidmüller Interface GmbH & Co. KG
 Klingenbergstraße 26
 D-32758 Detmold
 Germany

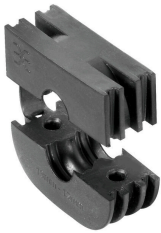
www.weidmueller.com

Accessories

General ordering data

| | | | |
|------------|----------------------------|---|--|
| Type | SDS 0.6X3.5X100 | Version | |
| Order No. | 2749340000 | Screwdriver, Blade width (B): 3.5 mm, Blade length: 100 mm, Blade thickness (A): 0.6 mm | |
| GTIN (EAN) | 4050118895568 | | |
| Qty. | 1 ST | | |

Seals



Intelligent cabling solutions can save you valuable time and money.

The FieldPower® modular system contains the right solution for every cabling task.

Foldable seals for the use of pre-assembled cables
 Seals available with M16 and M20 connection thread
 Integration of operating and signalling devices into the seal possible

General ordering data

| | | | |
|------------|----------------------------|--|--|
| Type | DGSB IP30 D0 PT6 | Version | |
| Order No. | 1967600000 | Field Power® sealing insert, Blank seal, IP30, with corresponding enclosure, TPE-U | |
| GTIN (EAN) | 4032248688746 | | |
| Qty. | 10 ST | | |