

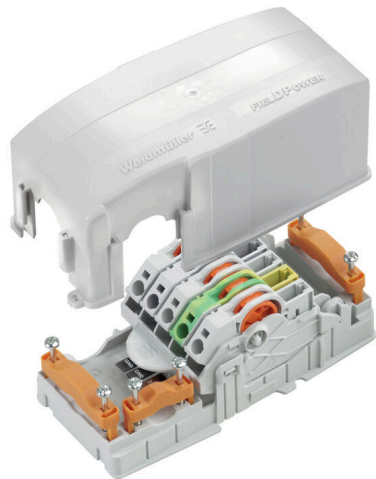
FP TERMINAL LG MPB**Weidmüller Interface GmbH & Co. KG**

Klingenbergstraße 26

D-32758 Detmold

Germany

www.weidmueller.com



The FieldPower® power distributors support error-free installation in an extremely short space of time. Branches and functions integrated in the cover can simply be plugged in. Robust with high protection degree.

General ordering data

Version	FieldPower® Box, AC, IP20, in complete state, Polycarbonate, Insulation displacement connection (IDC), PUSH IN, Distribution
Order No.	1206530000
Type	FP TERMINAL LG MPB
GTIN (EAN)	4032248988150
Qty.	1 items
Delivery status	Discontinued
Last order date	2025-09-25T00:00:00+02:00

FP TERMINAL LG MPB

Weidmüller Interface GmbH & Co. KG
 Klingenbergstraße 26
 D-32758 Detmold
 Germany

www.weidmueller.com

Technical data

Approvals

ROHS Conform

Dimensions and weights

Depth	59 mm	Depth (inches)	2.3228 inch
Height	159 mm	Height (inches)	6.2598 inch
Width	75 mm	Width (inches)	2.9527 inch
Net weight	250.8 g		

Temperatures

Storage temperature -40 °C...85 °C Operating temperature -40 °C...55 °C

Environmental Product Compliance

RoHS Compliance Status Compliant without exemption
 REACH SVHC No SVHC above 0.1 wt%

Clamping capacity

Connection data - contact element Branch / Feed-in	Wire connection method	PUSH IN		
	Blade size of operating tool	0.6 x 3.5 mm		
	Stripping length	14.00 mm		
	Number of poles	5		
	Conductor connection cross-section, solid, max.	6 mm ²		
	Conductor connection cross-section, solid, min.	0.50 mm ²		
	Conductor connection cross-section, stranded, max.	6.00 mm ²		
	Conductor connection cross-section, stranded, min.	0.50 mm ²		
	Conductor connection cross-section, finely stranded, max.	10.00 mm ²		
	Conductor connection cross-section, finely stranded, min.	0.50 mm ²		
	Conductor connection cross-section, finest stranded, max.	6.00 mm ²		
	Conductor connection cross-section, finest stranded, min.	0.50 mm ²		
	Conductor connection cross-section with wire end ferrule	Type of wire end ferrule	12 mm with plastic collar	
		Standard	DIN 46228/1	
		Cross-section, min.	0.5 mm ²	
		Cross-section, max.	6 mm ²	
		Type of wire end ferrule	12 mm with plastic collar	
		Standard	DIN 46228/4	
		Cross-section, min.	0.5 mm ²	
		Cross-section, max.	6 mm ²	
Type of wire end ferrule		8 mm with plastic collar ferrule		
Standard		DIN 46228/1		
Cross-section, min.		0.5 mm ²		
Cross-section, max.		6 mm ²		
Type of wire end ferrule	8 mm with plastic collar ferrule			
Standard	DIN 46228/4			
Cross-section, min.	0.5 mm ²			

FP TERMINAL LG MPB

Weidmüller Interface GmbH & Co. KG
 Klingenbergstraße 26
 D-32758 Detmold
 Germany

www.weidmueller.com

Technical data

		Cross-section, max.	6 mm ²
		Type of wire end ferrule	Twin wire-end ferrules
		Cross-section, min.	0.5 mm ²
		Cross-section, max.	6 mm ²
Connection data - contact element power bus	Wire connection method	Insulation displacement connection (IDC)	
	Blade size of operating tool	0.6 x 3.5 mm	
	Number of poles	5	
	Conductor connection cross-section, solid, max.	6 mm ²	
	Conductor connection cross-section, solid, min.	1.50 mm ²	
	Conductor connection cross-section, stranded, max.	6.00 mm ²	
	Conductor connection cross-section, stranded, min.	2.50 mm ²	
	Conductor connection cross-section, finely stranded, max.	6.00 mm ²	
	Conductor connection cross-section, finely stranded, min.	2.50 mm ²	
	Conductor connection cross-section, finest stranded, max.	6.00 mm ²	
Conductor connection cross-section, finest stranded, min.	2.50 mm ²		

General data

Basic material	Polycarbonate	Insulating material	Polycarbonate
Enclosure material	Polycarbonate	Silicone	No
Colour	beige	Protection degree	IP20, in complete state
UL 94 flammability rating	V-0	Lid attachment	plugged
lockable	No	Type of mounting	Screw mounting
Function	Distribution	Can be coded	Yes
Voltage type	AC	Number of poles	5
Number of connections / pole	1	Wire connection method	Insulation displacement connection (IDC), PUSH IN

Rated data acc. to IEC

Rated data acc. to IEC for contact element	Standard	IEC 60947-7-1, IEC 60947-7-2
	Rated voltage	800 V
	Rated impulse withstand voltage	8.00 kV
	Rated current (3 loaded poles)	41 A
	Rated current (4 loaded poles)	25 A

Rated data acc. to UL

Standards	not UL approved	
Rated data acc. to UL for contact element	Standard	UL 1059
	Note	for use with UL-listed TC-ER cables
	Conductor connection cross-section, AWG, max.	AWG 10
	Conductor connection cross-section, AWG, min.	AWG 14
	Rated voltage	600 V
	Rated current	30 A

Classifications

ETIM 8.0	EC000214	ETIM 9.0	EC000214
ETIM 10.0	EC000214	ECLASS 14.0	27-14-24-09
ECLASS 15.0	27-14-24-09		

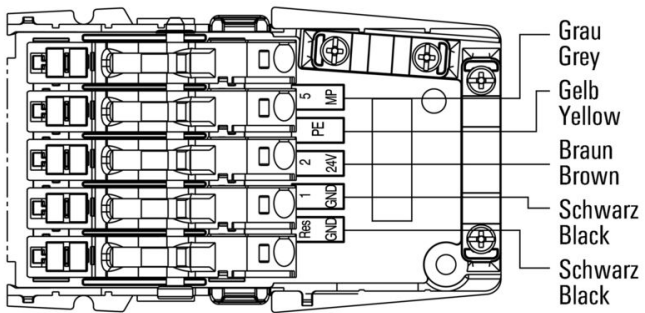
FP TERMINAL LG MPB

Weidmüller Interface GmbH & Co. KG
Klingenbergstraße 26
D-32758 Detmold
Germany

Drawings

www.weidmueller.com

PTB



FP TERMINAL LG MPB

Weidmüller Interface GmbH & Co. KG
 Klingenbergstraße 26
 D-32758 Detmold
 Germany

www.weidmueller.com

Accessories

Plug-in connector



Power distribution using uncut cables with cross-sections from 1.5 to 6 mm².

Power supply / T-branch tap via PUSH IN connection (0.5 to 10 mm²) and/or plug-in connection (0.5 to 4 mm²).

Coloured markings provide clear assignment of wires.

- Power supply
- Power distribution
- Power branching

General ordering data

Type	PTS 4 MPB	Version	
Order No.	1010910000	Field Power® plug-in connector, IP20, Polyamide, PUSH IN, Number	
GTIN (EAN)	4032248717330	of poles : 5	
Qty.	10 ST		

Tools



Sheathing stripper for PVC cables

General ordering data

Type	AM 16	Version	
Order No.	9204190000	Tools, Sheathing strippers	
GTIN (EAN)	4032248608133		
Qty.	1 ST		
Type	AM 25	Version	
Order No.	9001540000	Tools, Sheathing strippers	
GTIN (EAN)	4008190138271		
Qty.	1 ST		

Slotted screwdriver



Slotted screwdriver with rounded blade SD DIN 5265, ISO 2380/2, output to DIN 5264, ISO 2380/1. ChromTop tip, SoftFinish grip

FP TERMINAL LG MPB

Weidmüller Interface GmbH & Co. KG
 Klingenbergstraße 26
 D-32758 Detmold
 Germany

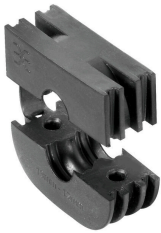
www.weidmueller.com

Accessories

General ordering data

Type	SDS 0.6X3.5X100	Version	
Order No.	2749340000	Screwdriver, Blade width (B): 3.5 mm, Blade length: 100 mm, Blade	
GTIN (EAN)	4050118895568	thickness (A): 0.6 mm	
Qty.	1 ST		

Seals



Intelligent cabling solutions can save you valuable time and money.

The FieldPower® modular system contains the right solution for every cabling task.

Foldable seals for the use of pre-assembled cables
 Seals available with M16 and M20 connection thread
 Integration of operating and signalling devices into the seal possible

General ordering data

Type	DGSB IP30 D0 PT6	Version	
Order No.	1967600000	Field Power® sealing insert, Blank seal, IP30, with corresponding	
GTIN (EAN)	4032248688746	enclosure, TPE-U	
Qty.	10 ST		