

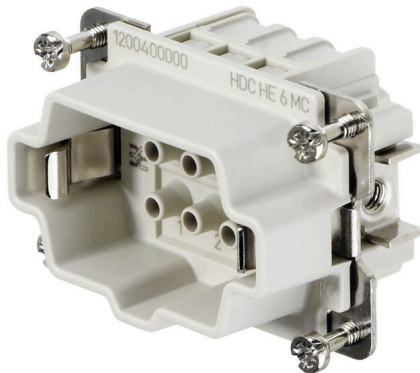
**HDC HE 6 MC****Weidmüller Interface GmbH & Co. KG**

Klingenbergstraße 26

D-32758 Detmold

Germany

www.weidmueller.com



For the crimp connection, the wire connection level is designed as a crimp contact. The established crimp connection has been used as a standard for decades.

Crimp contacts are not delivered with the inserts.

Number of poles: 6

Rated current: 24 A

Rated voltage: 500 V

Nominal voltage acc. to UL/CSA: 600 V AC/DC

**General ordering data**

|            |   |
|------------|---|
| Version    | HDC insert, Male, 500 V, 24 A, Number of poles: 6, Crimp connection, Installation size: 3 |
| Order No.  | <a href="#">1200400000</a>  |
| Type       | HDC HE 6 MC   |
| GTIN (EAN) | 4008 1901 10864   |
| Qty.       | 1 items   |

**HDC HE 6 MC**

**Weidmüller Interface GmbH & Co. KG**  
 Klingenbergstraße 26  
 D-32758 Detmold  
 Germany

www.weidmueller.com

**Technical data**

**Approvals**

Approvals



|                         |                            |
|-------------------------|----------------------------|
| ROHS                    | Conform                    |
| UL File Number Search   | <a href="#">UL Website</a> |
| Certificate No. (cURus) | E92202                     |

**Dimensions and weights**

|            |        |                 |             |
|------------|--------|-----------------|-------------|
| Depth      | 51 mm  | Depth (inches)  | 2.0079 inch |
| Height     | 34 mm  | Height (inches) | 1.3386 inch |
| Width      | 34 mm  | Width (inches)  | 1.3386 inch |
| Net weight | 31.5 g |                 |             |

**Temperatures**

|                   |                   |
|-------------------|-------------------|
| Limit temperature | -40 °C ... 125 °C |
|-------------------|-------------------|

**Environmental Product Compliance**

|                        |  |
|------------------------|--|
| RoHS Compliance Status | Compliant without exemption                    |
| REACH SVHC             | Potassium perfluorobutane sulfonate 29420-49-3 |
| SCIP                   | 1609748e-c278-4c9b-b3d1-e6215d2988cd           |

|                     |                          |                           |
|---------------------|--------------------------|---------------------------|
| Chemical resistance | Substance                | Acetone                   |
|                     | Chemical resistance      | Resistant                 |
|                     | Substance                | Ammonia, watery           |
|                     | Chemical resistance      | Conditionally resistant   |
|                     | Substance                | Petrol                    |
|                     | Chemical resistance      | Resistant                 |
|                     | Substance                | Benzene                   |
|                     | Chemical resistance      | Resistant                 |
|                     | Substance                | Diesel oil                |
|                     | Chemical resistance      | Conditionally resistant   |
|                     | Substance                | Acetic acid, concentrated |
|                     | Chemical resistance      | Resistant                 |
|                     | Substance                | Potassium hydroxide       |
|                     | Chemical resistance      | Conditionally resistant   |
|                     | Substance                | Methanol                  |
|                     | Chemical resistance      | Conditionally resistant   |
|                     | Substance                | Motor oil                 |
|                     | Chemical resistance      | Conditionally resistant   |
|                     | Substance                | Lye, diluted              |
|                     | Chemical resistance      | Resistant                 |
| Substance           | Hydrochlorofluorocarbons |                           |
| Chemical resistance | Conditionally resistant  |                           |
| Substance           | Outdoor use              |                           |
| Chemical resistance | Conditionally resistant  |                           |

**Dimensions**

|                |       |                   |       |
|----------------|-------|-------------------|-------|
| Width          | 34 mm | Total length base | 51 mm |
| Height of plug | 34 mm |                   |       |

## HDC HE 6 MC

**Weidmüller Interface GmbH & Co. KG**

Klingenbergstraße 26  
D-32758 Detmold  
Germany

www.weidmueller.com

## Technical data

### General data

|                                       |   |        |
|---------------------------------------|---|--------|
| Number of poles                       | 6   |        |
| Plugging cycles, silver               | ≥ 500   |        |
| Plugging cycles, gold                 | ≥ 500   |        |
| Type of connection                    | Crimp connection  |        |
| Installation size                     | 3   |        |
| UL 94 flammability rating             | V-0   |        |
| Volume resistance                     | ≤ 2 mΩ  |        |
| Colour                                | beige   |        |
| Insulation resistance                 | 1010 Ω  |        |
| Insulating material                   | PC glass-fibre reinforced (UL-listed and railway-certified) |        |
| Insulating material group             | IIIa  |        |
| Conductor cross-section               | 4 mm <sup>2</sup>   |        |
| Tightening torque, max. PE connection | 1.5 Nm  |        |
| Type                                  | Male  |        |
| Pollution severity                    | 3   |        |
| Tightening torque, min. PE connection | 1.2 Nm  |        |
| Basic material                        | Copper alloy  |        |
| Series                                | HE  |        |
| Rated voltage (DIN EN 61984)          | 500 V   |        |
| Rated voltage according to UL/CSA     | 600 V AC/DC   |        |
| Rated impulse voltage (DIN EN 61984)  | 6 kV  |        |
| Rated current (DIN EN 61984)          | 24 A  |        |
| Rated current (UR)                    | Wire connection cross section AWG                           | AWG 12 |
|                                       | Rated current   | 20 A   |
|                                       | Wire connection cross section AWG                           | AWG 14 |
|                                       | Rated current   | 15 A   |
|                                       | Wire connection cross section AWG                           | AWG 16 |
|                                       | Rated current   | 10 A   |
|                                       | Wire connection cross section AWG                           | AWG 18 |
|                                       | Rated current   | 7 A    |
|                                       | Wire connection cross section AWG                           | AWG 20 |
|                                       | Rated current   | 5 A    |
| Rated current (cUR)                   | Wire connection cross section AWG                           | AWG 12 |
|                                       | Rated current   | 18 A   |
|                                       | Wire connection cross section AWG                           | AWG 14 |
|                                       | Rated current   | 14.5 A |
|                                       | Wire connection cross section AWG                           | AWG 16 |
|                                       | Rated current   | 12 A   |
|                                       | Wire connection cross section AWG                           | AWG 18 |
|                                       | Rated current   | 7.5 A  |
|                                       | Wire connection cross section AWG                           | AWG 20 |
|                                       | Rated current   | 8 A    |
| Free from halogens                    | true  |        |
| Low smoke acc. DIN EN 45545-2         | Yes   |        |
| BG                                    | 3   |        |
| Number of signal contacts             | 0   |        |
| Number of power contacts              | 6   |        |

### Connection data PE

|                                       |                   |                                       |              |
|---------------------------------------|-------------------|---------------------------------------|--------------|
| Connection type PE                    | Screw connection  | Blade size, slotted (PE connection)   | SD 0.8 x 4.0 |
| Stripping length PE connection        | 10 mm             | Tightening torque, max. PE connection | 1.5 Nm       |
| Tightening torque, min. PE connection | 1.2 Nm            | Fixing screw                          | M 4          |
| Rated cross-section                   | 4 mm <sup>2</sup> | Wire cross section, AWG (PE), min.    | AWG 20       |
| Wire cross section, AWG (PE), max.    | AWG 12            |                                       |              |

## Technical data

### Version

|   |                     |  |                     |
|---|---------------------|--|---------------------|
| Wire connection cross section AWG, max.   | AWG 12              | Stripping length, rated connection                   | 7.5 mm              |
| Type of connection  | Crimp connection    | Installation size                                    | 3                   |
| Volume resistance   | ≤2 mΩ               | Wire connection cross section AWG, min.              | AWG 20              |
| Wire cross-section, solid, max.   | 4 mm <sup>2</sup>   | Wire cross-section, solid, min.                      | 0.5 mm <sup>2</sup> |
| Wire connection cross-section, finely stranded with wire-end ferrules DIN 46228/4, max. | 4 mm <sup>2</sup>   | Wire connection cross section, finely stranded, max. | 4 mm <sup>2</sup>   |
| Wire connection cross section, finely stranded, min.                                    | 0.5 mm <sup>2</sup> | Conductor cross-section, max.                        | 4 mm <sup>2</sup>   |
| Conductor cross-section, min.   | 0.5 mm <sup>2</sup> | Basic material                                       | Copper alloy        |
| BG  | 3                   |  |                     |

### Classifications

|             |             |             |             |
|-------------|-------------|-------------|-------------|
| ETIM 8.0    | EC000438    | ETIM 9.0    | EC000438    |
| ETIM 10.0   | EC000438    | ECLASS 14.0 | 27-44-02-05 |
| ECLASS 15.0 | 27-44-02-05 |             |             |

Drawings



## HDC HE 6 MC

Weidmüller Interface GmbH &amp; Co. KG

Klingenbergstraße 26

D-32758 Detmold

Germany

www.weidmueller.com

## Accessories

## Slotted screwdriver



VDE insulated slot-head screwdriver, SDI DIN 7437, ISO 2380/2, drive output acc. to DIN 5264, ISO 2380/1. SoftFinish grip

## General ordering data

|            |                            |                          |
|------------|----------------------------|--------------------------|
| Type       | SDIS 0.6X3.5X100           | Version                  |
| Order No.  | <a href="#">9008390000</a> | Screwdriver, Screwdriver |
| GTIN (EAN) | 4032248056354              |                          |
| Qty.       | 1 ST                       |                          |
| Type       | SDS 0.6X3.5X100            | Version                  |
| Order No.  | <a href="#">9008330000</a> | Screwdriver, Screwdriver |
| GTIN (EAN) | 4032248056286              |                          |
| Qty.       | 1 ST                       |                          |
| Type       | SDIS 0.8X4.0X100           | Version                  |
| Order No.  | <a href="#">9008400000</a> | Screwdriver, Screwdriver |
| GTIN (EAN) | 4032248056361              |                          |
| Qty.       | 1 ST                       |                          |
| Type       | SDS 0.8X4.0X100            | Version                  |
| Order No.  | <a href="#">9008340000</a> | Screwdriver, Screwdriver |
| GTIN (EAN) | 4032248056293              |                          |
| Qty.       | 1 ST                       |                          |

## Crosshead screwdriver Phillips



VDE insulated crosshead screwdriver, for Phillips screws, SDIK PH DIN 7438, ISO 8764/2-PH, output to ISO 8764-PH, SoftFinish grip

## General ordering data

|            |                            |                          |
|------------|----------------------------|--------------------------|
| Type       | SDIK PH1                   | Version                  |
| Order No.  | <a href="#">9008570000</a> | Screwdriver, Screwdriver |
| GTIN (EAN) | 4032248056569              |                          |
| Qty.       | 1 ST                       |                          |
| Type       | SDK PH1                    | Version                  |
| Order No.  | <a href="#">9008480000</a> | Screwdriver, Screwdriver |
| GTIN (EAN) | 4032248056477              |                          |
| Qty.       | 1 ST                       |                          |

**HDC HE 6 MC**

**Weidmüller Interface GmbH & Co. KG**  
 Klingenbergstraße 26  
 D-32758 Detmold  
 Germany

www.weidmueller.com

**Accessories**

**Crimping tools**



Crimping tools for turned contacts

- Ratchet guarantees precise crimping
- Release option in the event of incorrect operation
- With stop for exact positioning of the contacts.

**General ordering data**

|            |                            |   |
|------------|----------------------------|---|
| Type       | CTX CM 1.6/2.5             | Version   |
| Order No.  | <a href="#">9018490000</a> | Pressing tool, Crimping tool for contacts, 0.14mm <sup>2</sup> , 4mm <sup>2</sup> , W crimp |
| GTIN (EAN) | 4008190884598              |   |
| Qty.       | 1 ST                       |   |

|            |                            |  |
|------------|----------------------------|--|
| Type       | CTIN CM 1.6/2.5            | Version  |
| Order No.  | <a href="#">9205430000</a> | Pressing tool, Crimping tool for contacts, 0.14mm <sup>2</sup> , 6mm <sup>2</sup> , 4-indent crimp |
| GTIN (EAN) | 4032248733446              |  |
| Qty.       | 1 ST                       |  |

**Contact removal tools**



Weidmüller offers a variety of crimping tools, contact removal tools, and fibre optic tools.

**General ordering data**

|            |                            |                             |
|------------|----------------------------|-----------------------------|
| Type       | REMOVAL TOOL HE            | Version                     |
| Order No.  | <a href="#">1866750000</a> | Tools, Contact Removal Tool |
| GTIN (EAN) | 4032248437078              |                             |
| Qty.       | 1 ST                       |                             |

**HE**

Various accessories are available for our inserts. This includes coding elements for the inserts.



## HDC HE 6 MC

Weidmüller Interface GmbH &amp; Co. KG

Klingenbergstraße 26

D-32758 Detmold

Germany

www.weidmueller.com

## Accessories

## General ordering data

|            |                            |   |  |
|------------|----------------------------|---|--|
| Type       | HDC HE CP                  | Version   |  |
| Order No.  | <a href="#">1003240000</a> | Heavy-duty connectors, Accessories, Coding System |  |
| GTIN (EAN) | 4032248698233              |   |  |
| Qty.       | 100 ST                     |   |  |

## Crimp contacts HE



Crimps provide a electrical and mechanical connection between wire and contact that is both secure and reliable. The optimal crimp connection is gas-tight and corrosion-resistant.

## General ordering data

|            |                            |   |  |
|------------|----------------------------|---|--|
| Type       | HDC-C-HE-SM0.5AG           | Version   |  |
| Order No.  | <a href="#">1200500000</a> | Heavy-duty connectors, Crimp contact, HE, HEE, HQ, MixMate, Male, |  |
| GTIN (EAN) | 4008190159627              | Conductor cross-section, max.: 0.5, turned, Copper alloy          |  |
| Qty.       | 100 ST                     |   |  |
| Type       | HDC-C-HE-SM0.75-1.00AG     | Version   |  |
| Order No.  | <a href="#">1200600000</a> | Heavy-duty connectors, Crimp contact, HE, HEE, HQ, MixMate, Male, |  |
| GTIN (EAN) | 4008190171308              | Conductor cross-section, max.: 1, turned, Copper alloy            |  |
| Qty.       | 100 ST                     |   |  |
| Type       | HDC-C-HE-SM1.5AG           | Version   |  |
| Order No.  | <a href="#">1200700000</a> | Heavy-duty connectors, Crimp contact, HE, HEE, HQ, MixMate, Male, |  |
| GTIN (EAN) | 4008190074920              | Conductor cross-section, max.: 1.5, turned, Copper alloy          |  |
| Qty.       | 100 ST                     |   |  |
| Type       | HDC-C-HE-SM2.5AG           | Version   |  |
| Order No.  | <a href="#">1200800000</a> | Heavy-duty connectors, Crimp contact, HE, HEE, HQ, MixMate, Male, |  |
| GTIN (EAN) | 4008190131913              | Conductor cross-section, max.: 2.5, turned, Copper alloy          |  |
| Qty.       | 100 ST                     |   |  |
| Type       | HDC-C-HE-SM4.0AG           | Version   |  |
| Order No.  | <a href="#">1200900000</a> | Heavy-duty connectors, Crimp contact, HE, HEE, HQ, MixMate, Male, |  |
| GTIN (EAN) | 4008190115906              | Conductor cross-section, max.: 4, turned, Copper alloy            |  |
| Qty.       | 100 ST                     |   |  |
| Type       | HDC-C-HE-SM0.5AU           | Version   |  |
| Order No.  | <a href="#">1651420000</a> | Heavy-duty connectors, Crimp contact, HE, HEE, HQ, MixMate, Male, |  |
| GTIN (EAN) | 4008190400095              | Conductor cross-section, max.: 0.5, turned, Copper alloy          |  |
| Qty.       | 100 ST                     |   |  |
| Type       | HDC-C-HE-SM0.75-1.00AU     | Version   |  |
| Order No.  | <a href="#">1651430000</a> | Heavy-duty connectors, Crimp contact, HE, HEE, HQ, MixMate, Male, |  |
| GTIN (EAN) | 4008190400101              | Conductor cross-section, max.: 1, turned, Copper alloy            |  |
| Qty.       | 100 ST                     |   |  |
| Type       | HDC-C-HE-SM1.5AU           | Version   |  |
| Order No.  | <a href="#">1651440000</a> | Heavy-duty connectors, Crimp contact, HE, HEE, HQ, MixMate, Male, |  |
| GTIN (EAN) | 4008190400118              | Conductor cross-section, max.: 1.5, turned, Copper alloy          |  |
| Qty.       | 100 ST                     |   |  |

## HDC HE 6 MC

**Weidmüller Interface GmbH & Co. KG**  
 Klingenbergstraße 26  
 D-32758 Detmold  
 Germany

www.weidmueller.com

## Accessories

|            |                            |   |
|------------|----------------------------|---|
| Type       | HDC-C-HE-SM2.5AU           | Version   |
| Order No.  | <a href="#">1651450000</a> | Heavy-duty connectors, Crimp contact, HE, HEE, HQ, MixMate, Male, |
| GTIN (EAN) | 4008190400125              | Conductor cross-section, max.: 2.5, turned, Copper alloy          |
| Qty.       | 100 ST                     |   |
| Type       | HDC-C-HE-SM4.0AU           | Version   |
| Order No.  | <a href="#">1651460000</a> | Heavy-duty connectors, Crimp contact, HE, HEE, HQ, MixMate, Male, |
| GTIN (EAN) | 4008190400132              | Conductor cross-section, max.: 4, turned, Copper alloy            |
| Qty.       | 100 ST                     |   |
| Type       | HDC-C-HE-SM4.65AU          | Version   |
| Order No.  | <a href="#">1116540000</a> | Heavy-duty connectors, Crimp contact, HE, HEE, HQ, MixMate, Male, |
| GTIN (EAN) | 4032248897261              | Conductor cross-section, max.: 4.65, turned, Copper alloy         |
| Qty.       | 100 ST                     |   |

## DSTV

Various accessories are available for our inserts. This includes coding elements for the inserts.



## General ordering data

|            |                            |  |
|------------|----------------------------|--|
| Type       | DSTV COBU5                 | Version  |
| Order No.  | <a href="#">1471500000</a> | Heavy-duty connectors, Accessories, Coding element |
| GTIN (EAN) | 4008190178543              |  |
| Qty.       | 100 ST                     |  |
| Type       | DSTV COST4                 | Version  |
| Order No.  | <a href="#">1471300000</a> | Heavy-duty connectors, Accessories, Coding System  |
| GTIN (EAN) | 4008190017354              |  |
| Qty.       | 100 ST                     |  |