

## KTB FS 916115 S4E4

Weidmüller Interface GmbH & Co. KG

Klingenbergstraße 26

D-32758 Detmold

Germany

[www.weidmueller.com](http://www.weidmueller.com)

### Similar to illustration



Abbildung ähnlich

The Klippon® TB enclosure range provides excellent performance characteristics, even under the most difficult environmental conditions. In addition, it complies with the stricter requirements of potentially explosive atmospheres found in process or power generation industries. The Klippon® TB FS enclosure range offers further improvements to a product line that is already successfully leading the market.

The Klippon® TB FS enclosure range features the following advantages:

- Available in 12 sizes and 3 standard depths
- Equipped with up to 4 gland plates
- The gasket is protected against compression
- Cover lock outside the sealed zone
- Improved temperature performance
- IP66/IP67 protection
- Earthing stud in the cover and base of the enclosure
- Welded mounting feet

### General ordering data

Version	Klippon TB FS (Terminal Box - Fixing Screw), Empty enclosure, stainless steel enclosure, Height: 914 mm, Width: 610 mm, Depth: 150 mm, Gland plates: Bottom, top, left, right, Basic material: Stainless steel 1.4404 (316L), electropolished, silver
Order No.	<a href="#">1196640000</a>
Type	KTB FS 916115 S4E4
GTIN (EAN)	4032248979219
Qty.	1 items

## KTB FS 916115 S4E4

**Weidmüller Interface GmbH & Co. KG**  
 Klingenbergstraße 26  
 D-32758 Detmold  
 Germany

www.weidmueller.com

## Technical data

### Approvals

Approvals



ROHS	Conform
UL File Number Search	<a href="#">UL Website</a>
Certificate no. (cULus)	E256877

### Dimensions and weights

Depth	150 mm	Depth (inches)	5.9055 inch
Height	914 mm	Height (inches)	35.9842 inch
Width	610 mm	Width (inches)	24.0157 inch
Mounting dimension - height	559 mm	Mounting dimension - width	666 mm
Net weight	23400 g		

### Temperatures

Operating temperature	-60 °C...135 °C	Note: room temperature (service)	Limited to IP66 protection when used in temperatures greater than 105 °C.
-----------------------	-----------------	----------------------------------	---

### Environmental Product Compliance

RoHS Compliance Status	Compliant with exemption
RoHS Exemption (if applicable/known)	6c
REACH SVHC	Lead 7439-92-1
SCIP	8d5fcdfe-c58e-44e1-a6b4-74d2bbccc9dd

### Cable glands, left

M63	0	M75	0
M12	70	M50	8
M16	40	M32	12
M25	14	M20	34
M40	10		

### Cable glands, right

M25	14	M63	0
M75	0	M16	40
M40	10	M50	8
M32	12	M20	34
M12	70		

### Cable glands, top/bottom

M20	25	M12	53
M63	0	M40	8

## KTB FS 916115 S4E4

**Weidmüller Interface GmbH & Co. KG**

Klingenbergstraße 26  
D-32758 Detmold  
Germany

www.weidmueller.com

## Technical data

M32	9	M25	11
M50	6	M75	0
M16	29		

### Certificate numbers enclosure

Certificate No. UL Haz.Loc.	E223792	Declaration of Conformity No. (DoC LVD)	DE PS261X 160412 001ISS03
Certificate No. UL Ord.Loc.	E243298	Certificate No. UL 508A	E223801
Attestation of Conformity No. (AoC)	DE PS261X 160309 001ISS06	Certificate No. UL Terminal Box	E223792
Certificate No. Electronic Box (NEPSI)	2020322303003289	Certificate no. empty enclosure (ECAS)	21-09-25241/ E21-09-053807
Certificate no. Terminal Box (KOSHA)	16-AV4BO-0245X	Certificate no. empty enclosure (INMETRO)	LMP 21.0016U
Certificate No. (DNV)	TAE000013S	Certificate no. Terminal Box (AEx)	E223792
Certificate no. Terminal Box (ATEX)	IBExU14ATEX1050	Certificate no. empty enclosure (ATEX)	IBExU14ATEX1028 U
Certificate no. Terminal Box (INMETRO)	LMP 21.0017	Certificate no. (INMETRO)	IEX17.0021
Certificate no. Terminal Box (IECEX)	IECEXIBE14.0013	Certificate no. empty enclosure (IECEX)	IECEX IBE 14.0004U
Certificate No. (IECEX)	IECEXKEM10.0015U	Certificate No. (ATEX)	KEMA10ATEX0044U
Approval conditions	ATEX, CCoE, DNV, IECEX, INMETRO, KC, NEPSI, CCC, UL AEx Class Div., UL AEx Class Zone, cULus	Certificate no. (cULus)	E256877

### General information

Material thickness of cover	1.5 mm	Material thickness of flange	3 mm
Material thickness of enclosure	1.5 mm	Operating temperature, max.	135 °C
Operating temperature, min.	-60 °C	Lid attachment	M6 hex-head slotted screws SW10
Standards	DIN EN 62208 - Empty enclosure standard, DIN EN 15085-2, EN 60079-0, EN 60079-7, EN 60079-31, IEC 60079-0, IEC 60079-7, IEC 60079-31	Surface finish	electropolished
Impact resistance	7 J ATEX version, 10 J version standard	AF size	10 mm
Protection degree	IP66, IP67	Basic material	Stainless steel 1.4404 (316L)
Seal material	Silicone	Torque for lid screws	2.5 Nm
Integral fixing	4, 6 or 9 stud bolts M6 inner (female) thread	Enclosure attachment	4 welded-on mounting feet with 11 mm holes (2 slotted feet and 2 cross-shaped feet)
Note: protection class	If used in temperature ranges above 105 °C, IP protection is limited to IP 66.	Flange plate mounting	M6 hexagonal head screws 10 SW
Protection class (UL)	Type 3, Type 4X, Type 12	Number of lid screws	10
Gland plates	Bottom, top, left, right	Dimension of box	800x1070x240
Access opening: width	558 mm	Overall dimensions	936 x 691 x 158.5
Flange plate	Yes	Max. payload	223 kg
Access opening: height	862 mm	Position PE bolts	Enclosure side C
Areas of use	Explosive risk zone, Process industry, Oil and gas industry, Chemical industry, Offshore, Onshore		

## KTB FS 916115 S4E4

**Weidmüller Interface GmbH & Co. KG**  
 Klingenbergstraße 26  
 D-32758 Detmold  
 Germany

[www.weidmueller.com](http://www.weidmueller.com)

## Technical data

### Housing earth

Earth, enclosure, internal	Welded-on M6 stainless-steel earth stud in enclosure body and lid., Continuous M10 earth stud in body enclosure
----------------------------	---

### horizontal assembly

WDU 10 / ZDU 10	6x52	WDU 16 / ZDU 16	5x43
WDU 2,5 / ZDU 2,5 / IDU 2,5	8x102	WDU 35 / ZDU 35	4x32
WDU 4 / ZDU 4	7x85	WDU 6 / ZDU 6	7x64

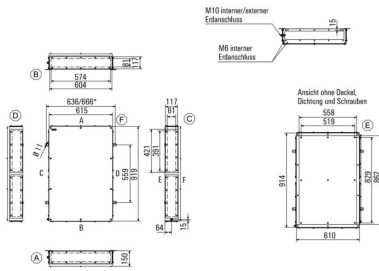
### vertical assembly

WDU 10 / ZDU 10	3x82	WDU 16 / ZDU 16	3x68
WDU 2,5 / ZDU 2,5 / IDU 2,5	5x161	WDU 35 / ZDU 35	2x51
WDU 4 / ZDU 4	4x135	WDU 6 / ZDU 6	4x102

### Classifications

ETIM 8.0	EC002503	ETIM 9.0	EC002503
ETIM 10.0	EC002503	ECLASS 14.0	27-18-05-02
ECLASS 15.0	27-18-05-02		

**Dimensioned drawing**



**KTB FS 916115 S4E4**

**Weidmüller Interface GmbH & Co. KG**  
 Klingenbergstraße 26  
 D-32758 Detmold  
 Germany

www.weidmueller.com

**Accessories**

**914 x 610mm**



Integrate, expand and customise: The ideal expansion for every application

The consistent structure of accessories for the new Klippon® TB enclosure range means that you can easily adapt the enclosure to the specific requirements of each application.

Mounting plates

Mounting plates, with and without hole patterns, for longitudinal and transverse mounting of DIN mounting rails or components directly onto the mounting plate.

**General ordering data**

Type	KTB MOPL 9161 MSZN	Version
Order No.	<a href="#">1194040000</a>	Klippon TB (Terminal Box), Mounting plate, Height: 859 mm, Width:
GTIN (EAN)	4050118028638	549 mm, Depth: 12 mm, Basic material: Sheet steel, galvanized, silver
Qty.	1 ST	
Type	KTB MOPL 9161 S2N	Version
Order No.	<a href="#">1193910000</a>	Klippon TB (Terminal Box), Mounting plate, Height: 859 mm, Width:
GTIN (EAN)	4050118028522	549 mm, Depth: 12 mm, Basic material: Stainless steel 1.4301 (304),
Qty.	1 ST	untreated, silver
Type	KTB MOPL 9161 MSZN H	Version
Order No.	<a href="#">2022740000</a>	Klippon TB (Terminal Box), Mounting plate, prepunched, Height: 859
GTIN (EAN)	4050118403299	mm, Width: 549 mm, Depth: 12 mm, Basic material: Sheet steel,
Qty.	1 ST	galvanized, silver
Type	KTB MOPL 9161 S2N H	Version
Order No.	<a href="#">1257760000</a>	Klippon TB (Terminal Box), Mounting plate, prepunched, Height: 859
GTIN (EAN)	4050118049343	mm, Width: 549 mm, Depth: 12 mm, Basic material: Stainless steel
Qty.	1 ST	1.4301 (304), untreated, silver

**Gland plates without earthing studs**



Integrate, expand and customise: The ideal expansion for every application

The consistent structure of accessories for the new Klippon® TB enclosure range means that you can easily adapt the enclosure to the specific requirements of each application.

Flange plates

Flange plates in two thicknesses, for easy replacement of pre-assembl

**General ordering data**

Type	KTB GP XX6115 AB S4 3MM	Version
Order No.	<a href="#">1281270000</a>	Klippon TB (Terminal Box), flange plate, straight, Height: 604 mm,
GTIN (EAN)	4050118071832	Width: 117 mm, Depth: 3 mm, Gland plates: top, Bottom, Basic
Qty.	1 ST	material: Stainless steel 1.4404, Stainless steel 1.4404 (316L),
		electropolished, silver
Type	KTB GP 91XX15V CD S4 3MM	Version
Order No.	<a href="#">1281280000</a>	Klippon TB (Terminal Box), flange plate, straight, Height: 421
GTIN (EAN)	4050118071917	mm, Width: 117 mm, Depth: 3 mm, Gland plates: left, right, Basic
Qty.	1 ST	material: Stainless steel 1.4404, Stainless steel 1.4404 (316L),
		electropolished, silver

## KTB FS 916115 S4E4

**Weidmüller Interface GmbH & Co. KG**  
 Klingenbergstraße 26  
 D-32758 Detmold  
 Germany

## Accessories

www.weidmueller.com

### Gland plates made out of stainless steel - 6 mm



Integrate, expand and customise: The ideal expansion for every application

The consistent structure of accessories for the new Klippon® TB enclosure range means that you can easily adapt the enclosure to the specific requirements of each application.

Flange plates

Flange plates in two thicknesses, for easy replacement of pre-assembl

#### General ordering data

Type	KTB GP XX6115 AB S4 6MM	Version
Order No.	<a href="#">1256710000</a>	Klippon TB (Terminal Box), flange plate, straight, Height: 604 mm,
GTIN (EAN)	4050118095913	Width: 117 mm, Depth: 6 mm, Gland plates: top, Bottom, Basic
Qty.	1 ST	material: Stainless steel 1.4404, electropolished, silver
Type	KTB GP 91XX15V CD S4 6MM	Version
Order No.	<a href="#">1256720000</a>	Klippon TB (Terminal Box), flange plate, straight, Height: 421 mm,
GTIN (EAN)	4050118094022	Width: 117 mm, Depth: 6 mm, Gland plates: left, right, Basic material:
Qty.	1 ST	Stainless steel 1.4404 (316L), electropolished, silver

### Gland plates with earthing studs



Integrate, expand and customise: The ideal expansion for every application

The consistent structure of accessories for the new Klippon® TB enclosure range means that you can easily adapt the enclosure to the specific requirements of each application.

Flange plates

Flange plates in two thicknesses, for easy replacement of pre-assembl

#### General ordering data

Type	KTB GP XX6115 AB S4 PE	Version
Order No.	<a href="#">2024150000</a>	Klippon TB (Terminal Box), flange plate, Height: 604 mm, Width: 117
GTIN (EAN)	4050118404296	mm, Depth: 3 mm, Gland plates: top, Bottom, Basic material: Stainless
Qty.	1 ST	steel 1.4404, electropolished, silver
Type	KTB GP 91XX15 CD S4 PE	Version
Order No.	<a href="#">2024300000</a>	Klippon TB (Terminal Box), flange plate, Height: 421 mm, Width: 117
GTIN (EAN)	4050118403954	mm, Depth: 3 mm, Gland plates: left, right, Basic material: Stainless
Qty.	1 ST	steel 1.4404, electropolished, silver

## KTB FS 916115 S4E4

**Weidmüller Interface GmbH & Co. KG**  
 Klingenbergstraße 26  
 D-32758 Detmold  
 Germany

www.weidmueller.com

## Accessories

## Stainless steel 1.4301



Integrate, expand and customise: The ideal expansion for every application

The consistent structure of accessories for the new Klippon® TB enclosure range means that you can easily adapt the enclosure to the specific requirements of each application.

## Rain Covers

The rain cover provides an ideal, additional level of protection for the enclosure if it is installed in unusual climatic zones with, for instance, very heavy rainfall or extreme levels of direct sunlight.

## General ordering data

Type	KTB RNHD 916115 R	Version
Order No.	<a href="#">1281550000</a>	Klippon TB (Terminal Box), Rain hood, Height: 53.4 mm, Width: 615
GTIN (EAN)	4050118071979	mm, Depth: 160.5 mm, Basic material: Stainless steel 1.4301, Mirror
Qty.	1 ST	polished, silver

## Stainless steel 1.4404 (316L)



Integrate, expand and customise: The ideal expansion for every application

The consistent structure of accessories for the new Klippon® TB enclosure range means that you can easily adapt the enclosure to the specific requirements of each application.

## Rain Covers

The rain cover provides an ideal, additional level of protection for the enclosure if it is installed in unusual climatic zones with, for instance, very heavy rainfall or extreme levels of direct sunlight.

## General ordering data

Type	KTB RNHD XX6115 S4E R	Version
Order No.	<a href="#">1314320000</a>	Klippon TB (Terminal Box), Rain hood, Height: 53.4 mm, Width: 615
GTIN (EAN)	4050118117530	mm, Depth: 160.5 mm, Basic material: Stainless steel 1.4404 (316L),
Qty.	1 ST	electropolished, silver

## Type label holder



Integrate, expand and customise: The ideal expansion for every application

The consistent structure of accessories for the new Klippon® TB enclosure range means that you can easily adapt the enclosure to the specific requirements of each application.

## Nameplate holders

There are a variety of designed label holders available for prominent display as required and for additional nameplates as needed.

## KTB FS 916115 S4E4

**Weidmüller Interface GmbH & Co. KG**  
 Klingenbergstraße 26  
 D-32758 Detmold  
 Germany

## Accessories

www.weidmueller.com

### General ordering data

Type	TPSDHA KTB 100X25 S2 2R	Version
Order No.	<a href="#">1257640000</a>	Klippon TB (Terminal Box), Ratings plate holder, Riveted, Height: 25
GTIN (EAN)	4050118070354	mm, Width: 141 mm, Depth: 16.5 mm, Basic material: Stainless steel
Qty.	1 ST	1.4301, Stainless steel 1.4301 (304), Mirror polished, silver
Type	TPSDHA KTB 130X50 S2 R	Version
Order No.	<a href="#">1283450000</a>	Klippon TB (Terminal Box), Ratings plate holder, Riveted, Height: 50
GTIN (EAN)	4050118073621	mm, Width: 171 mm, Depth: 16.5 mm, Basic material: Stainless steel
Qty.	1 ST	1.4301, Stainless steel 1.4301 (304), Mirror polished, silver
Type	TPSDHA KTB 70X70M3 S2 R	Version
Order No.	<a href="#">1279320000</a>	Klippon TB (Terminal Box), Ratings plate holder, Riveted, Height: 70
GTIN (EAN)	4050118070101	mm, Width: 70 mm, Depth: 20 mm, Basic material: Stainless steel
Qty.	1 ST	1.4301, Stainless steel 1.4301 (304), Mirror polished, silver

### Installation material



Integrate, expand and customise - the perfect supplement to every application

The fully structured range of system accessories for the new Klippon® TB enclosure series allows you to easily adapt the enclosures to meet the specific requirements of every application.

**Mounting hardware kits**

Mounting hardware kits are available for quick and easy installation of type label holders, document holders and rain hoods.

The label fastening set – SD is required to install a plastic (Trafolyte) ID or type label. With the aid of this set can you mount the ID or type label directly on the enclosure cover. The label fastening set has been specially developed for this purpose. Only by using this fastening set can you ensure that there will be no leaks into the enclosure or damage to the label.

The universal fastening set – TPSD has been developed to enable secure and quick installation of type label holders, rain covers or document holders, for example. By using this fastening set, the risk of leaks can be minimised, if not avoided.

### General ordering data

Type	SD FIXING SET	Version
Order No.	<a href="#">1285200000</a>	Klippon TB (Terminal Box), Identification plate fixing set, Height: 12
GTIN (EAN)	4050118075472	mm, Width: 12 mm, Depth: 16.4 mm, Basic material: Stainless steel,
Qty.	1 ST	rust-proof, untreated, silver
Type	TPSD FIXING SET KTB	Version
Order No.	<a href="#">1252190000</a>	Klippon TB (Terminal Box), Type plate fixings set, Basic material:
GTIN (EAN)	4050118043969	Stainless steel, rust-proof, untreated, silver
Qty.	20 ST	

Accessories

Earthing stud



Integrate, expand and customise: The ideal expansion for every application

The consistent structure of accessories for the new Klippon® TB enclosure range means that you can easily adapt the enclosure to the specific requirements of each application.

Earthing bolt

Earthing bolts to exchange as a complete component in two versions – brass and stainless steel.

General ordering data

Type	PEBZ M10 KTB BR SET	Version
Order No.	<a href="#">1192680000</a>	Klippon TB (Terminal Box), Earthing stud, Miscellaneous, Height: 21 mm, Width: 21 mm, Depth: 48.7 mm, Basic material: Brass,
GTIN (EAN)	4032248974641	untreated, silver
Qty.	1 ST	
Type	PEBZ M10 KTB S4 SET	Version
Order No.	<a href="#">1192690000</a>	Klippon TB (Terminal Box), Earthing stud, Miscellaneous, Height: 21 mm, Width: 21 mm, Depth: 48.7 mm, Basic material: Stainless steel
GTIN (EAN)	4032248974658	1.4404 (316L), untreated, silver
Qty.	1 ST	

Document holders



Integrate, expand and customise - the perfect supplement to every application

The fully structured range of system accessories for the new Klippon® TB enclosure series allows you to easily adapt the enclosures to meet the specific requirements of every application.

Document holders

Document holders for the proper storage of documents in the enclosure

General ordering data

Type	DOHA KTB A6 S2 R	Version
Order No.	<a href="#">1252780000</a>	Klippon TB (Terminal Box), Document holders, Riveted, Height: 110 mm, Width: 130 mm, Depth: 20 mm, Basic material: Stainless steel
GTIN (EAN)	4050118045512	1.4301, Stainless steel 1.4301 (304), Mirror polished, silver
Qty.	1 ST	
Type	DOHA KTB A5 S2 R	Version
Order No.	<a href="#">1252750000</a>	Klippon TB (Terminal Box), Document holders, Riveted, Height: 150 mm, Width: 180 mm, Depth: 20 mm, Basic material: Stainless steel
GTIN (EAN)	4050118045390	1.4301, Stainless steel 1.4301 (304), Mirror polished, silver
Qty.	1 ST	
Type	DOHA KTB A4 S2 R	Version
Order No.	<a href="#">1252730000</a>	Klippon TB (Terminal Box), Document holders, Riveted, Height: 200 mm, Width: 240 mm, Depth: 20 mm, Basic material: Stainless steel
GTIN (EAN)	4050118045383	1.4301, Stainless steel 1.4301 (304), Mirror polished, silver
Qty.	1 ST	

## KTB FS 916115 S4E4

**Weidmüller Interface GmbH & Co. KG**  
 Klingenbergstraße 26  
 D-32758 Detmold  
 Germany

www.weidmueller.com

## Accessories

### Grounding strap

The fully structured range of system accessories for the new Klippon® TB enclosure series allows you to easily adapt the enclosures to meet the specific requirements of every application. The following options are available:

- Closure Elements
- Document holders
- Earthing stud
- Gland plates
- Installation material
- Mounting plates
- Rain hoods
- Spacer
- Terminal rails
- Type label holder

#### General ordering data

Type	PECD WIRE 6/200/D6 SET	Version
Order No.	<a href="#">2475490000</a>	Klippon TB (Terminal Box), Grounding strap, Sscrewed, Basic material:
GTIN (EAN)	4050118487206	Steel, Green/yellow
Qty.	1 ST	

### Depth 7.5 mm



Integrate, expand and customise: The ideal expansion for every application

The consistent structure of accessories for the new Klippon® TB enclosure range means that you can easily adapt the enclosure to the specific requirements of each application.

Terminal rails

The mounting rails are available in two sizes for mounting DIN rails (e.g. electronics, terminals) components in the enclosures.

#### General ordering data

Type	TS35X7.5 ST KTB9161 HOR	Version
Order No.	<a href="#">8000006729</a>	Rail, TS 35, TS 35 x 7.5, Width: 535 mm, without slot, Steel, galvanized, chromium-plated
GTIN (EAN)	4050118653021	
Qty.	20 ST	
Type	TS35X7.5 ST KTB9161 VER	Version
Order No.	<a href="#">8000006718</a>	Rail, TS 35, TS 35 x 7.5, Width: 845 mm, without slot, Steel, galvanized, chromium-plated
GTIN (EAN)	4050118652963	
Qty.	20 ST	

## KTB FS 916115 S4E4

**Weidmüller Interface GmbH & Co. KG**  
 Klingenbergstraße 26  
 D-32758 Detmold  
 Germany

www.weidmueller.com

## Accessories

### Mounting plates



Mounting plates, with and without hole patterns, for longitudinal and transverse mounting of DIN mounting rails or components directly onto the mounting plate.

### General ordering data

Type	GFSC M5X10 TX20 SET	Version	
Order No.	<a href="#">1274150000</a>	Klippon EB (Essential Box), Mounting screw, Height: 13.3 mm, Width: 8.5 mm, Depth: 8.5 mm, Basic material: Steel, galvanized, galvanic zinc plated and passivated, silver	
GTIN (EAN)	4050118063820		
Qty.	1 ST		

### Depth 15 mm



Integrate, expand and customise: The ideal expansion for every application  
 The consistent structure of accessories for the new Klippon® TB enclosure range means that you can easily adapt the enclosure to the specific requirements of each application.  
 Terminal rails  
 The mounting rails are available in two sizes for mounting DIN rails (e.g. electronics, terminals) components in the enclosures.

### General ordering data

Type	TS35X15 ST KTB9161 HOR	Version	
Order No.	<a href="#">8000073132</a>	Rail, TS 35, TS 35 x 15, Width: 535 mm, without slot, Steel, galvanic zinc plated and passivated	
GTIN (EAN)	4064675340881		
Qty.	20 ST		
Type	TS35X15 ST KTB9161 HOR-C	Version	
Order No.	<a href="#">8000073133</a>	Rail, TS 35, TS 35 x 15, Width: 535 mm, without slot, Steel, galvanic zinc plated and passivated	
GTIN (EAN)	4064675340898		
Qty.	20 ST		
Type	TS35X15 ST KTB9161 VER	Version	
Order No.	<a href="#">8000073134</a>	Rail, TS 35, TS 35 x 15, Width: 845 mm, without slot, Steel, galvanic zinc plated and passivated	
GTIN (EAN)	4064675340904		
Qty.	20 ST		
Type	TS35X15 ST KTB9161 VER-C	Version	
Order No.	<a href="#">8000073135</a>	Rail, TS 35, TS 35 x 15, Width: 845 mm, without slot, Steel, galvanic zinc plated and passivated	
GTIN (EAN)	4064675340911		
Qty.	20 ST		

**Accessories**

**Installation material**



Integrate, expand and customise - the perfect supplement to every application

The fully structured range of system accessories for the new Klippon® TB enclosure series allows you to easily adapt the enclosures to meet the specific requirements of every application.

**Mounting hardware kits**

Mounting hardware kits are available for quick and easy installation of type label holders, document holders and rain hoods.

The label fastening set – SD is required to install a plastic (Trafolyte) ID or type label. With the aid of this set can you mount the ID or type label directly on the enclosure cover. The label fastening set has been specially developed for this purpose. Only by using this fastening set can you ensure that there will be no leaks into the enclosure or damage to the label.

The universal fastening set – TPSD has been developed to enable secure and quick installation of type label holders, rain covers or document holders, for example. By using this fastening set, the risk of leaks can be minimised, if not avoided.

**General ordering data**

Type	FKSC M6X8 D9/SW3	Version	
Order No.	<a href="#">0642600000</a>	Klippon TB (Terminal Box), Mounting screw, Basic material: Steel	
GTIN (EAN)	4008190058258		
Qty.	50 ST		