

ACT20M-UI-AO-S

Weidmüller Interface GmbH & Co. KG
 Klingenbergstraße 26
 D-32758 Detmold
 Germany

www.weidmueller.com



The software configurable Universal Transmitter ACT20M-UI-AO-S separates and converts standard analogue signals. An analogue input signal (voltage, current, resistance, potentiometer, RTD, TC) is converted linear and galvanic isolated into an analogue output signal. The input may also operate as an active current loop (the loop current provided by the device). The power supply is galvanically isolated from input and output and happens via a direct wiring or the Weidmüller DIN Rail Bus (3-way isolation).

General ordering data

Version	Temperature converter, Analogue isolating amplifier, Input : universal U, I, R,9, Output : I / U
Order No.	1176030000
Type	ACT20M-UI-AO-S
GTIN (EAN)	4032248970070
Qty.	1 items

ACT20M-UI-AO-S

Weidmüller Interface GmbH & Co. KG
 Klingenbergstraße 26
 D-32758 Detmold
 Germany

www.weidmueller.com

Technical data

Approvals

Approvals



ROHS	Conform
UL File Number Search	UL Website
Certificate no. (cULus)	E337701

Dimensions and weights

Depth	114.3 mm	Depth (inches)	4.5 inch
Height	112.5 mm	Height (inches)	4.4291 inch
Width	6.1 mm	Width (inches)	0.2402 inch
Net weight	80 g		

Temperatures

Storage temperature	-40 °C...85 °C	Operating temperature	-25 °C...70 °C
Humidity at operating temperature	0...95 % (no condensation)	Humidity	40 °C / 93 % rel. humidity, no condensation

Probability of failure

SIL in compliance with IEC 61508	None	MTBF	176 a
----------------------------------	------	------	-------

Environmental Product Compliance

RoHS Compliance Status	Compliant with exemption
RoHS Exemption (if applicable/known)	7a, 7cl
REACH SVHC	Lead 7439-92-1
SCIP	2f6dd957-421a-46db-a0c2-cf1609156924

Input

Sensor	Thermocouples: B / C / E / J / K / L / N / R / S / T / W3 / W5 - 200...+ 2300 °C depending on thermocouple, RTD: PT10, PT20, PT50, PT100, PT250, PT300, PT400, PT500, PT1000, Ni50, Ni100, Ni120, Ni1000, 2-/3-/4-wire	Number inputs	1
Potentiometer	10...100 kΩ	Sensor supply	> 15 V DC at 20 mA
Input voltage	configurable, 0(2)...10 V, 0(1)...5 V, 0...1 V DC, 0,2...1 V DC	Temperature input range	Configurable, min. measurement range 10°C (RTD), min. measurement range 50°C (TC), PT100: -200°C...850 °C, NI100: -60°C...+250 °C, TC type: B (0...+1820 °C), E: (-100...+1000 °C), J: (-100...

ACT20M-UI-AO-S

Weidmüller Interface GmbH & Co. KG

Klingenbergstraße 26

D-32758 Detmold

Germany

www.weidmueller.com

Technical data

Resistance	0...10 kΩ	Input current	+1200 °C), K: (-180...+1372 °C), L: (-200...+900 °C), N: (-180...+1300 °C), R: (-50...+1760 °C), S: (-50...+1760 °C), T: (-200...+400 °C), U: (-200...+600 °C), W3: (0...+2300 °C), W5: (0...+2300 °C), LR: (-200...+800 °C), Details under Downloads "Measuring range Table ACT20M-UI-AO"
Input resistance, voltage	> 10 MΩ	Input resistance, current	configurable, 0...20 mA, 4...20mA
Voltage drop, current input	<3 V		20 Ω + PTC 50 Ω

Output

Number of outputs	1	load impedance voltage	≥ 10 kΩ
Load impedance current	≤ 600 Ω, @ max 28mA	Wire break detection	Yes, if using RTD / POT / TC
Type	active, connected control must be passive	Output voltage, note	configurable, 0(2)...10 V, 0(1)...5 V, 0(0,2)...1 V, 1...(0,2)0 V, 5...(1)0 V, 10...(2)0 V, downscale (0 V), upscale (11 V), in case of sensor error
Output current	configurable, 0...20 mA, 4...20 mA, 20...0 mA, 20...4 mA, downscale (3,5 mA), upscale (23 mA), in case of sensor error	Cut-off frequency (-3 dB)	100 Hz

General data

Accuracy	<0.1 % of measuring range	Protection degree	IP20
Supply voltage	24 V DC ±30 % at terminal or via CH20M rail bus	Step response time	400 ms (10...90%) @ U/I, 1 s @ temp
Mounting rail	TS 35	Temperature coefficient	≤ 0.01 % / °C
Nominal power consumption	1.2 VA	Configuration	With FDT/DTM software, Requires configuration adapter 8978580000 CBX200 USB
Operating altitude	≤ 2000 m	Power consumption, max.	1.2 W
Power consumption, typ.	0.84 W		

Insulation coordination

EMC standards	IEC 61326-1	Surge voltage category	II
Pollution severity	2	Galvanic isolation	3-way isolator
Insulation voltage	2.5 kVeff / 1 min.	Rated voltage	300 Veff

Data for Ex applications (ATEX)

Marking	II 3 G Ex nA IIC T4 Gc	IECEx - gas labelling	Ex nA IIC T4 Gc, Standard: IEC 60079-0-15
Installation location	Device installed in safe area, zone 2		

ACT20M-UI-AO-S

Weidmüller Interface GmbH & Co. KG
 Klingenbergstraße 26
 D-32758 Detmold
 Germany

www.weidmueller.com

Technical data

Connection data

Type of connection	Screw connection	Tightening torque, min.	0.4 Nm
Tightening torque, max.	0.6 Nm	Clamping range, rated connection	2.5 mm ²
Clamping range, min.	0.5 mm ²	Clamping range, max.	2.5 mm ²
Wire connection cross section AWG, min.	AWG 30	Wire connection cross section AWG, max.	AWG 14

EMC conformity and approvals

EMC standards	IEC 61326-1	Standards	IEC 61010-1
---------------	-------------	-----------	-------------

Part description

Product description	The software configurable Universal Transmitter ACT20M-UI-AO-S separates and converts standard analogue signals. An analogue input signal (voltage, current, resistance, potentiometer, RTD, TC) is converted linear and galvanic isolated into an analogue output signal. The input may also operate as an active current loop (the loop current provided by the device). The power supply is galvanically isolated from input and output and happens via a direct wiring or the Weidmüller DIN Rail Bus (3-way isolation).		
---------------------	--	--	--

Classifications

ETIM 8.0	EC002653	ETIM 9.0	EC002653
ETIM 10.0	EC002653	ECLASS 14.0	27-21-01-20
ECLASS 15.0	27-21-01-20		

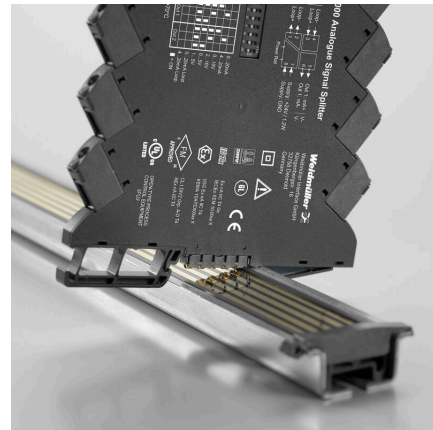
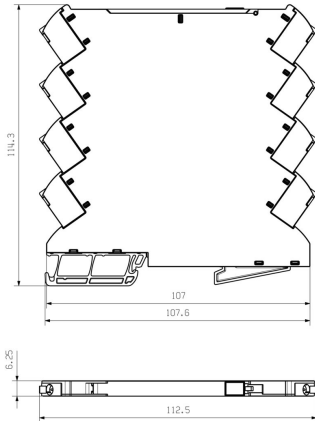
ACT20M-UI-AO-S

Weidmüller Interface GmbH & Co. KG
 Klingenbergstraße 26
 D-32758 Detmold
 Germany

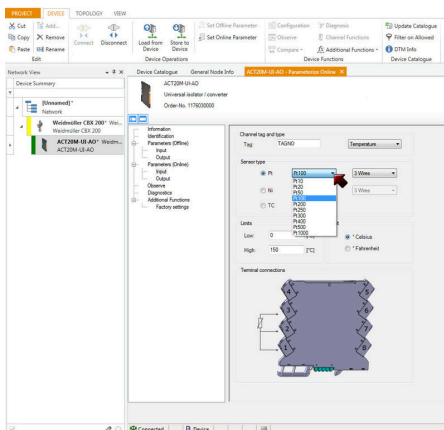
Drawings

www.weidmueller.com

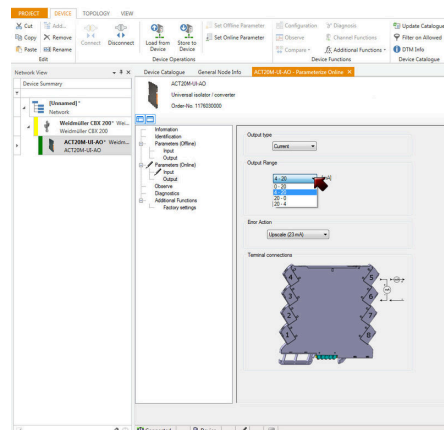
Dimensional drawing



Additional power supply option via bus



screenshot, setup temperature input with FDT2 / DTM software



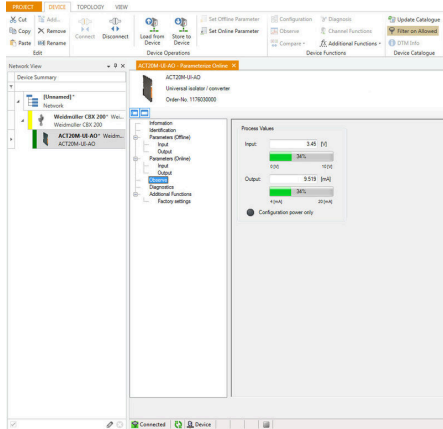
11760300004801.tif

ACT20M-UI-AO-S

Weidmüller Interface GmbH & Co. KG
 Klingenbergstraße 26
 D-32758 Detmold
 Germany

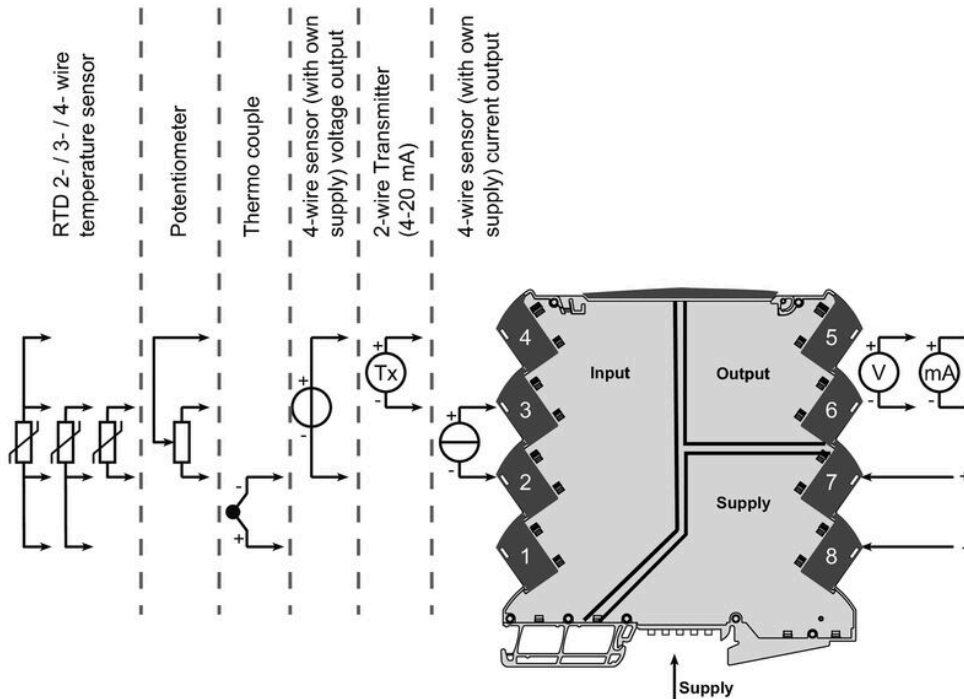
Drawings

www.weidmueller.com



screenshot, setup output with FDT2 / DTM software

Connection diagram



ACT20M-UI-AO-S

Weidmüller Interface GmbH & Co. KG
 Klingenbergstraße 26
 D-32758 Detmold
 Germany

www.weidmueller.com

Accessories

Blank



MultiFit is the Weidmüller marker system used for other makes of terminals. Similar to the Weidmüller Dekafix, the markers of the MultiFit family are available ready-for-use with standard printing.

We recommend to carry out a test with sample markers on the terminals used when using MultiFit for the first time.

- One marker, suitable for different makes of terminals.
- Ready-to-use markers with standard printing
- Blank markers for printing with the PrintJet CONNECT or Plotter
- Delivery of individually printed markers according to customer CAE data or specifications
- One marking system for all applications

For custom printing: Please send us a file of our labeling software M-Print PRO or M-Print PRO Online (without installation) for your labeling specifications.

General ordering data

Type	MF 5/7.5 MC NE WS	Version	
Order No.	1877680000		MultiFit, Terminal marker, 5 x 7.5 mm, Pitch in mm (P): 7.50 Adels
GTIN (EAN)	4032248468270		RKW, Phoenix, white
Qty.	320 ST		

Configuration interfaces



General ordering data

Type	CBX200 USB	Version	
Order No.	8978580000		
GTIN (EAN)	4032248813759		
Qty.	1 ST		

ACT20M-UI-AO-S

Weidmüller Interface GmbH & Co. KG
 Klingenbergstraße 26
 D-32758 Detmold
 Germany

Accessories

www.weidmueller.com

ACT20-FEED-IN



General ordering data

Type	ACT20-FEED-IN-BASIC-S	Version	
Order No.	1282490000	Supply module, Distributes supply voltage to rail bus	
GTIN (EAN)	4050118072730		
Qty.	1 ST		

CH20M BUS SET - Kit



The integrated rail bus for the modular electronics housing system

When supplying, connecting or distributing within modular applications, the rail bus can replace the tedious individual wiring process with a flexible and uninterrupted system-wide solution.

The system bus is securely integrated within the 35-mm standard mounting rail. The SMD-bus contact block can be reflow-soldered so that it can be completely automatically processed during the component assembly. The resistant, gold-plated contact surfaces ensure a permanent and reliable contact for all housing widths.

- **Unlimited scalability** The integrated connection solution covers all system widths: from the 6-mm slice to the 67-mm large-area housing.
- **Easy to service during installation** It's easy to replace a module, even in existing modules groups – without any influence on the neighbouring modules.
- **Universal integration** The uninterrupted system bus is securely integrated within the 35-mm standard mounting rail.
- **Maximum availability** Five fully-galvanized and partially gold-plated twin-arched contacts are used to establish a permanent contact to the rail bus. THR solder flanges ensure that the connection to the circuit board is stable.

General ordering data

Type	SAMPLE CH20M BUS 250MM	Version	
Order No.	1335150000	Mounting rail bus system, Sample set, OMNIMATE Housing - series	
GTIN (EAN)	4050118138382	CH20M, Width: 25.1 mm	
Qty.	1 ST		

ACT20M-UI-AO-S

Weidmüller Interface GmbH & Co. KG
Klingenbergstraße 26
D-32758 Detmold
Germany

www.weidmueller.com

Accessories

Type	SAMPLE CH20M BUS 250MM	Version
	...	
Order No.	1335140000	Mounting rail bus system, Sample set, OMNIMATE Housing - series
GTIN (EAN)	4050118138375	CH20M, Width: 25.1 mm
Qty.	1 ST	