

**ACT20M-AI-AO-E-S****Weidmüller Interface GmbH & Co. KG**

Klingenbergstraße 26

D-32758 Detmold

Germany

www.weidmueller.com

**Product image, Similar to illustration****ACT20M: The slim solution**

- Safe and space-saving (6 mm) isolation and conversion
- Quick installation of the power supply unit using the CH20M mounting rail bus
- Easy configuration via DIP switch or FDT/DTM software
- Extensive approvals such as ATEX, IECEx, GL, DNV
- High interference resistance

**General ordering data**

Version	Analogue isolating amplifier, Configurable, without sensor supply, Input : I / U, Output : I / U
Order No.	<a href="#">1176010000</a>
Type	ACT20M-AI-AO-E-S
GTIN (EAN)	4032248970094
Qty.	1 items

## ACT20M-AI-AO-E-S

Weidmüller Interface GmbH &amp; Co. KG

Klingenbergstraße 26

D-32758 Detmold

Germany

www.weidmueller.com

## Technical data

## Approvals

Approvals



ROHS Conform

UL File Number Search [UL Website](#)

Certificate no. (cULus) E337701

## Dimensions and weights

Depth	114.3 mm	Depth (inches)	4.5 inch
Height	112.5 mm	Height (inches)	4.4291 inch
Width	6.1 mm	Width (inches)	0.2402 inch
Net weight	83.5 g		

## Temperatures

Storage temperature	-40 °C...85 °C	Operating temperature	-25 °C...70 °C
Humidity at operating temperature	0...95 % (no condensation)	Humidity	40 °C / 93 % rel. humidity, no condensation

## Probability of failure

SIL in compliance with IEC 61508	None	MTBF	249 a
----------------------------------	------	------	-------

## Environmental Product Compliance

RoHS Compliance Status	Compliant with exemption
RoHS Exemption (if applicable/known)	7a, 7cl
REACH SVHC	Lead 7439-92-1
SCIP	2f6dd957-421a-46db-a0c2-cf1609156924

## Input

Sensor	Voltage source, Current source	Number inputs	1
Input frequency	100 Hz	Input voltage	configurable, 0(2)...10 V, 0(1)...5 V
Input current	configurable, 0...20 mA, 4...20mA	Input resistance, voltage	>500 kΩ
Input resistance, current	70 Ω	Voltage drop, current input	<1,5 V

## Output

Number of outputs	1	load impedance voltage	≥ 10 kΩ
Load impedance current	≤ 600 Ω, @ max 23mA	Type	active, connected control must be passive
Output voltage, note	configurable, 0(2)...10 V, 0(1)...5 V	Output current	configurable, 0...20 mA, 4...20 mA
Cut-off frequency (-3 dB)	100 Hz		

## General data

Accuracy	<0.2 % of measuring range
Protection degree	IP20
Supply voltage	24 V DC ±30 % at terminal or via CH20M rail bus

Creation date 21.12.2025 08:54:51 MEZ

Catalogue status / Drawings

## ACT20M-AI-AO-E-S

Weidmüller Interface GmbH &amp; Co. KG

Klingenbergstraße 26  
D-32758 Detmold  
Germany

[www.weidmueller.com](http://www.weidmueller.com)

## Technical data

Step response time	≤ 7 ms	
Mounting rail	TS 35	
Temperature coefficient	≤ 0.015 % / °C	
Delivery state	Setting parameters	Input
	Configuration	0...20 mA
	Setting parameters	Output
	Configuration	0...20 mA
Nominal power consumption	1.2 VA	
Configuration	DIP switch	
Operating altitude	≤ 2000 m	
Power consumption, max.	0.8 W	
Power consumption, typ.	0.56 W	
Delivery state	Input: 0...20 mA // Output: 0...20 mA	

## Insulation coordination

EMC standards	EN 61326-1	Surge voltage category	II
Pollution severity	2	Galvanic isolation	3-way isolator
Insulation voltage	2.5 kVeff / 1 min.	Rated voltage	300 Veff

## Data for Ex applications (ATEX)

Installation location	Device installed in safe area, zone 2
-----------------------	---------------------------------------

## Connection data

Type of connection	Screw connection	Tightening torque, min.	0.4 Nm
Tightening torque, max.	0.6 Nm	Clamping range, rated connection	2.5 mm <sup>2</sup>
Clamping range, min.	0.5 mm <sup>2</sup>	Clamping range, max.	2.5 mm <sup>2</sup>
Wire connection cross section AWG, min.	AWG 30	Wire connection cross section AWG, max.	AWG 14

## EMC conformity and approvals

EMC standards	EN 61326-1	Standards	IEC 61010-1
---------------	------------	-----------	-------------

## Part description

Product description	The configurable DC isolating amplifier ACT20M-AI-AO-E-S isolates and converts analogue signals. An analogue input signal is linearly converted into an analogue output signal and galvanically isolated. The power supply is galvanically isolated from the input and output (3-way isolation) by means of direct wiring or the Weidmüller rail bus.
---------------------	---

## Classifications

ETIM 8.0	EC002653	ETIM 9.0	EC002653
ETIM 10.0	EC002653	ECLASS 14.0	27-21-01-20
ECLASS 15.0	27-21-01-20		

## Tender specification sheets

Long specification	Universal standard signal isolating amplifier 1-channel signal isolating amplifier in 6.1 mm width with external power supply, for transmitting and isolating analogue DC	Short specification	Universal standard signal isolating amplifier 1-channel signal isolating amplifier in 6.1 mm width with external power supply, for transmitting and isolating analogue DC
--------------------	--	---------------------	--

**ACT20M-AI-AO-E-S****Weidmüller Interface GmbH & Co. KG**Klingenbergstraße 26  
D-32758 Detmold  
Germany[www.weidmueller.com](http://www.weidmueller.com)**Technical data**

current signals 0/4 to 20  
mA and voltage signals  
0/2 to 10 V // 0/1 to 5 V.  
Input and output signals  
can be configured with DIP  
switches. Add-on housing  
for TS35 rail mounting  
Dimensions: L/W/H  
114.3/ 6.1/ 112.5 mm  
Screw  
connection / Nominal  
cross-section 2.5 mm<sup>2</sup>  
Protection degree: IP 20  
Input 0/4...20  
mA

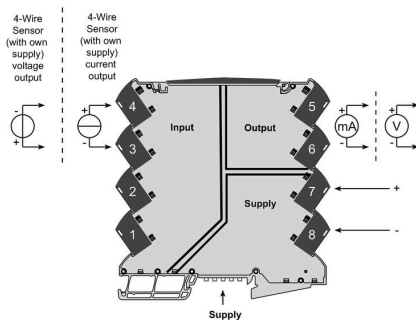
0/2...10 V or 0/1...10 V  
Isolation EN  
61010-1, 3-way isolation  
up to 2.5 kV AC/DC of all  
circuits against each other  
Test voltage 2.5  
kV input against output  
against auxiliary power  
Rated voltage  
300 V AC/DC at  
overvoltage category II and  
pollution degree 2  
Approvals  
cULus, DNV, GL  
Output  
0/4...20 mA

0/2...10 V or 0/1...5 V  
Load resistance <  
600 Ohm/ Strom/> 10  
kOhm/ voltage  
Transmission error <  
0,2 % v. E.  
Limit frequency  
100 Hz  
Auxiliary power  
24 VDC +/- 30 %  
Power loss  
approx. 0.8 W  
Ambient  
temperature range 0  
°C...+70 °C  
Type  
ACT20M-AI-AO-E-S

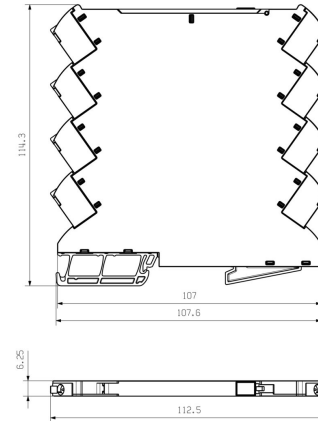
current signals 0/4...20  
mA and voltage signals  
0/2...10V // 0/1...5 V. I/O  
signals are configured with  
DIP switches.

## Drawings

### Connection diagram



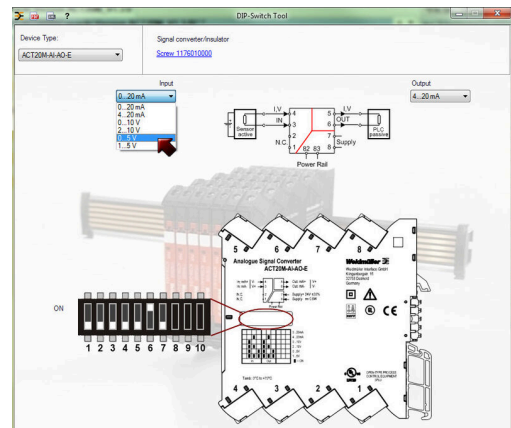
### Dimensional drawing



DIP switch setting

Range	Input Setup				Output setup		
	1	2	3	4	5	6	7
0...20 mA							
4...20 mA							
0...10 V							
2...10 V							
0...5 V							
1...5 V							

■ = ON



Example of DIP switch setting with software tool



Additional power supply option via bus

# ACT20M-AI-AO-E-S

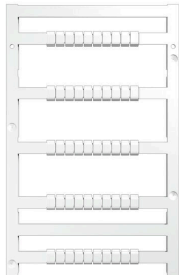
**Weidmüller Interface GmbH & Co. KG**

 Klingenbergstraße 26  
 D-32758 Detmold  
 Germany

[www.weidmueller.com](http://www.weidmueller.com)

## Accessories

### Blank



MultiFit is the Weidmüller marker system used for other makes of terminals. Similar to the Weidmüller Dekafix, the markers of the MultiFit family are available ready-for-use with standard printing.

We recommend to carry out a test with sample markers on the terminals used when using MultiFit for the first time.

- One marker, suitable for different makes of terminals.
- Ready-to-use markers with standard printing
- Blank markers for printing with the PrintJet CONNECT or Plotter
- Delivery of individually printed markers according to customer CAE data or specifications
- One marking system for all applications

For custom printing: Please send us a file of our labeling software M-Print PRO or M-Print PRO Online (without installation) for your labeling specifications.

### General ordering data

Type	MF 5/7.5 MC NE WS	Version
Order No.	<a href="#">1877680000</a>	MultiFit, Terminal marker, 5 x 7.5 mm, Pitch in mm (P): 7.50 Adels
GTIN (EAN)	4032248468270	RKW, Phoenix, white
Qty.	320 ST	

### ACT20 (incl. DIN rail bus & powersupplies)



Power supply adapter modules for separate supply and distribution of the supply voltage: for the ACT20 series/ MICROSERIES signal converters.

The 22.5/6.1 mm wide power-feed modules are mounted directly adjacent to the analogue signal converters. Then the 24 VDC supply voltage is optionally bridged via the CH20M (ACT20-series) rail bus or simply bridged over using the pluggable ZQV 4N (MICROSERIES) cross-connectors.

The ACT20-Feed-In-PRO-S can also detect faults coming from any of the devices mounted on the CH20 bus mounting profile.

In the event of an error or fault, the integrated status relay sends a common alarm to the external controller. In addition, two power supply units (as primary and backup supply) can be connected to the ACT20 Feed-In PRO-S.

Two feed-in modules mounted to the CH20 bus mounting profile guarantee a 100% redundant power supply.

Three LEDs are used to show the status of the power supply and error messages.

The ACT20M-Feed-In PRO can also be used in Ex zone2 / Division2 applications.

### General ordering data

Type	ACT20-FEED-IN-BASIC-S	Version
Order No.	<a href="#">1282490000</a>	Supply module, Distributes supply voltage to rail bus
GTIN (EAN)	4050118072730	
Qty.	1 ST	

**ACT20M-AI-AO-E-S**
**Weidmüller Interface GmbH & Co. KG**

 Klingenbergstraße 26  
 D-32758 Detmold  
 Germany

[www.weidmueller.com](http://www.weidmueller.com)
**Accessories**
**CH20M BUS SET - Kit**


The integrated rail bus for the modular electronics housing system

When supplying, connecting or distributing within modular applications, the rail bus can replace the tedious individual wiring process with a flexible and uninterrupted system-wide solution.

The system bus is securely integrated within the 35-mm standard mounting rail. The SMD-bus contact block can be reflow-soldered so that it can be completely automatically processed during the component assembly. The resistant, gold-plated contact surfaces ensure a permanent and reliable contact for all housing widths.

- **Unlimited scalability** The integrated connection solution covers all system widths: from the 6-mm slice to the 67-mm large-area housing.
- **Easy to service during installation** It's easy to replace a module, even in existing modules groups – without any influence on the neighbouring modules.
- **Universal integration** The uninterrupted system bus is securely integrated within the 35-mm standard mounting rail.
- **Maximum availability** Five fully-galvanized and partially gold-plated twin-arched contacts are used to establish a permanent contact to the rail bus. THR solder flanges ensure that the connection to the circuit board is stable.

**General ordering data**

Type	SAMPLE CH20M BUS 250MM	Version
	...	
Order No.	<a href="#">1335150000</a>	Mounting rail bus system, Sample set, OMNIMATE Housing - series
GTIN (EAN)	4050118138382	CH20M, Width: 25.1 mm
Qty.	1 ST	

**ACT20M-AI-AO-E-S****Weidmüller Interface GmbH & Co. KG**

Klingenbergstraße 26

D-32758 Detmold

Germany

www.weidmueller.com

**Accessories****ACT20 (incl. DIN rail bus & powersupplies)**

Power supply adapter modules for separate supply and distribution of the supply voltage; for the ACT20 series/ MICROSERIES signal converters.

The 22.5/6.1 mm wide power-feed modules are mounted directly adjacent to the analogue signal converters. Then the 24 VDC supply voltage is optionally bridged via the CH20M (ACT20-series) rail bus or simply bridged over using the pluggable ZQV 4N (MICROSERIES) cross-connectors.

The ACT20-Feed-In-PRO-S can also detect faults coming from any of the devices mounted on the CH20 bus mounting profile.

In the event of an error or fault, the integrated status relay sends a common alarm to the external controller. In addition, two power supply units (as primary and backup supply) can be connected to the ACT20 Feed-In PRO-S.

Two feed-in modules mounted to the CH20 bus mounting profile guarantee a 100% redundant power supply.

Three LEDs are used to show the status of the power supply and error messages.

The ACT20M-Feed-In PRO can also be used in Ex zone2 / Division2 applications.

**General ordering data**

Type	SAMPLE CH20M BUS 250MM	Version
	...	
Order No.	<a href="#">1335140000</a>	Mounting rail bus system, Sample set, OMNIMATE Housing - series
GTIN (EAN)	4050118138375	CH20M, Width: 25.1 mm
Qty.	1 ST	