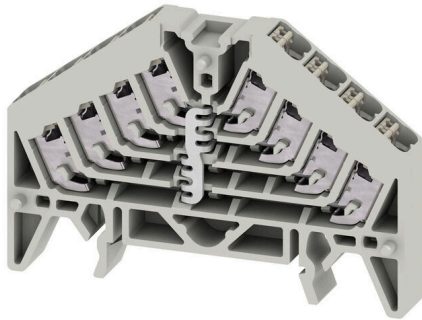


PPV 4 GR 35X7.5 DGR

Weidmüller Interface GmbH & Co. KG
Klingenbergstraße 26
D-32758 Detmold
Germany

www.weidmueller.com

Product image

PUSH IN terminal blocks for Signal marshalling (PRV) with up to 16 connection levels are specially designed to meet the requirements for wiring initiator and actuator signals in process control engineering. The optimised design guarantees a space saving of up to 50 percent in the panel. And the unique V-shape of the current bars ensures consistently low contact resistances.

General ordering data

Version	P-series, Potential distributor, Rated cross-section: 1.5 mm ² , Number of levels: 4, Number of connections: 16, Colour: grey
Order No.	1173890000
Type	PPV 4 GR 35X7.5 DGR
GTIN (EAN)	4032248966257
Qty.	20 items

PPV 4 GR 35X7.5 DGR

Weidmüller Interface GmbH & Co. KG
Klingenbergstraße 26
D-32758 Detmold
Germany

www.weidmueller.com

Technical data

Approvals

Approvals



ROHS Conform

UL File Number Search [UL Website](#)

Certificate No. (cURus) E60693

Dimensions and weights

Depth	47 mm	Depth (inches)	1.8504 inch
Height	70 mm	Height (inches)	2.7559 inch
Width	9.2 mm	Width (inches)	0.3622 inch
Net weight	21.95 g		

Temperatures

Storage temperature	-25 °C...55 °C	Ambient temperature	-5 °C...40 °C
Continuous operating temp., min.	-50 °C	Continuous operating temp., max.	130 °C

Environmental Product Compliance

RoHS Compliance Status	Compliant without exemption
REACH SVHC	No SVHC above 0.1 wt%

Material data

Basic material	Polycarbonate	Material of operational elements	PBT
Colour	grey	UL 94 flammability rating	V-0

System specifications

Version	PUSH IN connection, Vertically cross-connected, One end without connector	End cover plate required	Yes
Number of potentials	1	Number of levels	4
Number of clamping points per level	4	Number of potentials per tier	1
Levels cross-connected internally	Yes	PE connection	No
Mounting rail	TS 35 x 7.5	N-function	No
PE function	No	PEN function	No

Additional technical data

Explosion-tested version	No	Type of mounting	Snap-on
--------------------------	----	------------------	---------

CSA rating data

Wire cross section max. (CSA)	16 AWG	Certificate No. (CSA)	200039-2406089
Voltage size B (CSA)	300 V	Current size B (CSA)	10 A
Voltage size D (CSA)	300 V	Current size D (CSA)	10 A
Wire cross section min. (CSA)	26 AWG		

PPV 4 GR 35X7.5 DGR

Weidmüller Interface GmbH & Co. KG

Klingenbergstraße 26
D-32758 Detmold
Germany

www.weidmueller.com

Technical data

Conductors for clamping (additional connection)

Connection type, additional connection PUSH IN

Conductors for clamping (rated connection)

Wire connection cross section AWG, max.	AWG 16	Connection direction	Inclined / angled
Stripping length	10 mm	Type of connection 2	PUSH IN
Type of connection	PUSH IN	Number of connections	16
Clamping range, max.	1.5 mm ²	Clamping range, min.	0.13 mm ²
Blade size	0.6 x 3.5 mm	Wire connection cross section AWG, min.	AWG 24
Wire connection cross-section, finely stranded with wire-end ferrules DIN 46228/4, max.	1.5 mm ²	Wire connection cross-section, finely stranded with wire-end ferrules DIN 46228/4, min.	0.13 mm ²
Wire connection cross-section, finely stranded with wire-end ferrules DIN 46228/1, max.	1.5 mm ²	Wire connection cross-section, finely stranded with wire-end ferrules DIN 46228/1, min.	0.13 mm ²
Wire connection cross section, finely stranded, max.	1.5 mm ²	Wire connection cross section, finely stranded, min.	0.13 mm ²
Connection cross-section, stranded, max.	1.5 mm ²	Connection cross-section, stranded, min.	0.13 mm ²
Wire connection cross-section, solid core, max.	1.5 mm ²	Wire connection cross-section, solid core, min.	0.13 mm ²

General

Number of poles	4	Wire connection cross section AWG, max.	AWG 16
Wire connection cross section AWG, min.	AWG 24	Standards	IEC 60947-7-1, DIN EN 60079
Mounting rail	TS 35 x 7.5		

Rating data

Rated cross-section	1.5 mm ²	Rated voltage	250 V
Rated DC voltage	250 V	Nominal current	17.5 A
Current at maximum wires	17.5 A	Standards	IEC 60947-7-1, DIN EN 60079
Volume resistance according to IEC 60947-7-x	1.83 mΩ	Rated impulse withstand voltage	4 kV
Power loss in accordance with IEC 60947-7-x	0.56 W	Surge voltage category	III
Pollution severity	3		

UL rating data

Conductor size Factory wiring max. (cURus)	16 AWG	Voltage size B (cURus)	300 V
Voltage size D (cURus)	300 V	Certificate No. (cURus)	E60693
Conductor size Field wiring min. (cURus)	26 AWG	Conductor size Factory wiring min. (cURus)	26 AWG
Current size B (cURus)	10 A	Current size D (cURus)	10 A
Conductor size Field wiring max. (cURus)	16 AWG		

Classifications

ETIM 8.0	EC000897	ETIM 9.0	EC000897
ETIM 10.0	EC000897	ECLASS 14.0	27-25-01-19

PPV 4 GR 35X7.5 DGR

Weidmüller Interface GmbH & Co. KG
Klingenbergstraße 26
D-32758 Detmold
Germany

www.weidmueller.com

Technical data

ECLASS 15.0

27-25-01-19

Drawings

