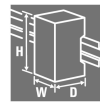
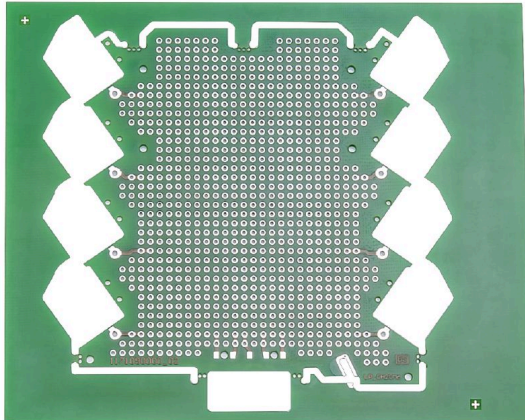


SAMPLE LP CH20M6**Weidmüller Interface GmbH & Co. KG**

Klingenbergstraße 26

D-32758 Detmold

Germany

www.weidmueller.com**Product image**

Future-proof solutions for industrial electronics for mounting in the control cabinet

Electronichousings are crucial for the integration of electronic assemblies in the control cabinet. They protect sensitive components and ensure reliable connections. Thanks to high-quality materials, they offer long-term solutions for industrial applications.

Your advantages:

Flexibility: Scalable solutions for different requirements

Safety: Robust design to protect your electronics

Efficiency: Simple installation and optimized connection technology

Housing solutions for every application:

Our portfolio includes modular housings (e.g. CH20M), small housings and profile housings designed for control, signal conversion and safety applications. These housings offer customizable designs, easy mounting and high connection capacity.

Customization:

In addition to standard solutions, we offer customization in design, color and printing. The Weidmüller Configurator enables individual design.

Our service:

We offer expert advice and technical support for your projects. In the download area you will find CAD data, data sheets and installation instructions for efficient integration.

General ordering data

Version	Electronics housing sample, OMNIMATE Housing - series CH20M green, PCB for self-assembly, CH20M6, for 4 connection levels, Width: 0.8 mm
Order No.	1171090000
Type	SAMPLE LP CH20M6
GTIN (EAN)	4032248962778
Qty.	1 items

SAMPLE LP CH20M6

Weidmüller Interface GmbH & Co. KG

Klingenbergstraße 26

D-32758 Detmold

Germany

www.weidmueller.com

Technical data

Approvals

ROHS	Conform
------	---------

Dimensions and weights

Depth	116 mm	Depth (inches)	4.5669 inch
Height	142 mm	Height (inches)	5.5905 inch
Width	0.8 mm	Width (inches)	0.0315 inch
Net weight	22 g		

Environmental Product Compliance

RoHS Compliance Status	Compliant
REACH SVHC	No SVHC above 0.1 wt%

Material data

Insulating material group	II	Surface finish	untreated
---------------------------	----	----------------	-----------

General data

Colour	green	Protection degree	IP20 in installed state
Colour chart (similar)	RAL 6032		

Classifications

ETIM 6.0	EC001031	ETIM 7.0	EC001031
ETIM 8.0	EC001031	ETIM 9.0	EC001031
ETIM 10.0	EC001031	ECLASS 9.0	27-18-27-02
ECLASS 9.1	27-18-27-92	ECLASS 10.0	27-18-27-02
ECLASS 11.0	27-18-27-02	ECLASS 12.0	27-18-27-02
ECLASS 13.0	27-19-02-04	ECLASS 14.0	27-19-02-04
ECLASS 15.0	27-19-02-04		