

## IE-C5ES8UG0010M40M40-G

**Weidmüller Interface GmbH & Co. KG**  
Klingenbergstraße 26  
D-32758 Detmold  
Germany

[www.weidmueller.com](http://www.weidmueller.com)



Assembled cables, patch cable Cabinet Line, Cat. 5, PUR, green

### General ordering data

Version	System cable, RJ45 IP 20, RJ45 IP 20, Cat.5 (ISO/IEC 11801), PUR, 1 m
Order No.	<a href="#">1166000010</a>
Type	IE-C5ES8UG0010M40M40-G
GTIN (EAN)	403224895653 1
Qty.	1 items

## IE-C5ES8UG0010M40M40-G

Weidmüller Interface GmbH & Co. KG  
Klingenbergstraße 26  
D-32758 Detmold  
Germany

www.weidmueller.com

## Technical data

## Approvals

Approvals



ROHS Conform

UL File Number Search [UL Website](#)

Certificate no. (cULus) E316369

## Dimensions and weights

Length	1 m	Length (inches)	39.3701 inch
Net weight	44.88 g		

## Temperatures

Storage temperature		Operating temperature	-40 °C...75 °C
Installation temperature	-10 °C...60 °C		

## Environmental Product Compliance

RoHS Compliance Status Compliant without exemption

REACH SVHC No SVHC above 0.1 wt%

## Electrical properties

PoE / PoE+ conforming to IEEE  
802.3at

## General standards

Connector standard	IEC 60603-7-5 1	Certificate no. (cULus)	E316369
--------------------	-----------------	-------------------------	---------

## Standards

Connector standard	IEC 60603-7-5 1
--------------------	-----------------

## Cable structure

Strands	7	Sheathing colour	green
Cross-section	4*2*AWG 26/7 - 4*2*0.128 mm <sup>2</sup>	Shielding	SF/UTP
Number of wires	8	Insulation cross-section	0.98 mm
Insulation	PE	Sheath diameter, max.	6 mm
Sheath diameter, min.	5.6 mm	Material sheath	PUR
Wire pair shielding	Aluminium foil	Arrangement of wire cores	Twisted pair
Complete shielding	Shielding braid made from copper wiring	Wire material	Stranded tin-plated copper wire
Colour sequence or wires - wire pairs	white/blue - blue, white/ orange - orange, white/ green - green, white/ brown - brown		

**IE-C5ES8UG0010M40M40-G**

**Weidmüller Interface GmbH & Co. KG**  
 Klingenbergstraße 26  
 D-32758 Detmold  
 Germany

www.weidmueller.com

**Technical data**

**Electrical properties of cable**

Transmission rate	10/100 MBit/s, 1000 MBit/s	Category	Cat.5 (ISO/IEC 11801)
Test voltage: wire-wire-shield	750 V DC, 1 min		

**Mechanical and material properties of cable**

Resistance to oils	EN 50305	Silicone-free	Yes
UV-resistant	Yes	Halogen	halogen-free, according to IEC 60754-2
Min. bending radius, repetitive	10 x cable diameter	Min. bending radius, once only	5 x cable diameter
Abrasion resistance	very good	Resistance to spread of flame	in accordance with IEC 60332-1

**Plug**

Plug right	RJ45, IP20, male contact, straight, plug, Plastic, shielded	Plug left	RJ45, IP20, male contact, straight, plug, Plastic, shielded
------------	---	-----------	---

**Plug, left**

Plug left	RJ45, IP20, male contact, straight, plug, Plastic, shielded
-----------	---

**Plug, right**

Plug right	RJ45, IP20, male contact, straight, plug, Plastic, shielded
------------	---

**Classifications**

ETIM 8.0	EC002599	ETIM 9.0	EC002599
ETIM 10.0	EC002599	ECLASS 14.0	27-06-03-08
ECLASS 15.0	27-06-03-08		

## IE-C5ES8UG0010M40M40-G

**Weidmüller Interface GmbH & Co. KG**  
Klingenbergstraße 26  
D-32758 Detmold  
Germany

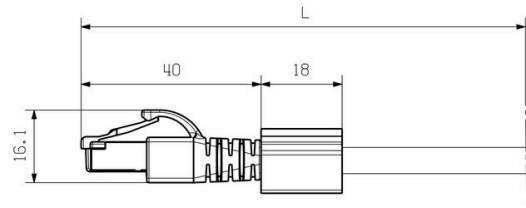
[www.weidmueller.com](http://www.weidmueller.com)

# Drawings

### Wiring

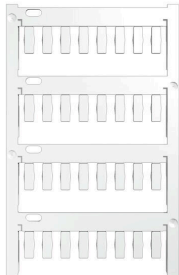
RJ45	1	white, orange	1	RJ45
	2	orange	2	
	3	white, green	3	
	4	blue	4	
	5	white, blue	5	
	6	green	6	
	7	white, brown	7	
	8	brown	8	

### Dimensioned drawing



**Accessories**

**Blank**



TM-I is an acknowledged and accredited marker type for traffic engineering applications. There are various different tag lengths available for individual labelling with long character strings. Easy handling of separation and installation thanks to the project marker field. Pre-attachment of sleeves and retrofitting of tags offer excellent versatility

The special contour of TM-I allows easy assembly and secures firm positioning. They are compatible with a number of commercially available sleeves. Thanks to the MultiCard format, the tags can be printed quickly and conveniently with the PrintJet CONNECT, plotter or the STI pen.

- Easy handling of separation and installation thanks to the project marker field.
- Acknowledged and accredited marker for traffic engineering applications
- Pre-attachment of sleeves and retrofitting of tags offer excellent versatility
- Not suited for labelling with P-Ink or STI pen in connection with CLI T sleeves

For custom printing: Please send us a file of our labeling software M-Print PRO or M-Print PRO Online (without installation) for your labeling specifications.

**General ordering data**

Type	TM-I 12 MC NE WS	Version
Order No.	<a href="#">1718411044</a>	TM-I, Insert markers, 12 x 4 mm, white
GTIN (EAN)	4008190348977	
Qty.	320 ST	
Type	TM-I 18 MC NE WS	Version
Order No.	<a href="#">1718431044</a>	TM-I, Insert markers, 1.5 - 22 mm, 18 x 4 mm, white
GTIN (EAN)	4008190349011	
Qty.	320 ST	