

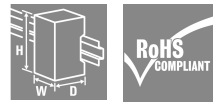
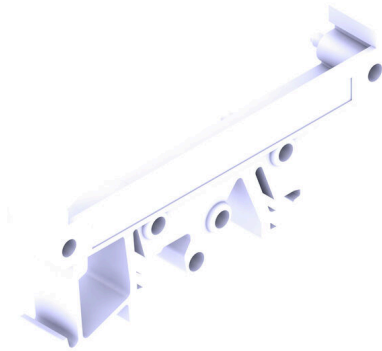
RF RS 70 RE/A5/O.SG BK**Weidmüller Interface GmbH & Co. KG**

Klingenbergstraße 26

D-32758 Detmold

Germany

www.weidmueller.com



The RS 70 profile is a pluggable, modular system for the mounting rail that can be flexibly extended to the required length. It consists of intermediate sections in various lengths. Optionally with or without snap-in foot, as well as end plates with integrated marking option. The PCB is inserted from the side, while the permanently integrated latching feet enable stable fastening.

General ordering data

Version	Clip-in foot, RS 70 black, End plate DIN mounting rail right, Width: 13.7 mm
Order No.	1162900000
Type	RF RS 70 RE/A5/O.SG BK
GTIN (EAN)	4032248958160
Qty.	20 items

RF RS 70 RE/A5/O.SG BK

Weidmüller Interface GmbH & Co. KG
 Klingenbergstraße 26
 D-32758 Detmold
 Germany

www.weidmueller.com

Technical data

Approvals

ROHS	Conform
------	---------

Dimensions and weights

Depth	28.55 mm	Depth (inches)	1.124 inch
Height	70 mm	Height (inches)	2.7559 inch
Width	13.7 mm	Width (inches)	0.5394 inch
Net weight	5.6 g		

Environmental Product Compliance

RoHS Compliance Status	Compliant without exemption
REACH SVHC	No SVHC above 0.1 wt%

Material data

UL 94 flammability rating	V-2	Insulating material	PA 66
Surface finish	untreated	Basic material	PA 66
Comparative Tracking Index (CTI)	600 ≤ CTI		

General data

Colour	black	Protection degree	IP00
Colour chart (similar)	RAL 9011	Encapsulation option	No

Classifications

ETIM 8.0	EC002779	ETIM 9.0	EC002779
ETIM 10.0	EC002779	ECLASS 14.0	27-19-06-02
ECLASS 15.0	27-19-06-02		

RF RS 70 RE/A5/O.SG BK

Weidmüller Interface GmbH & Co. KG
Klingenbergstraße 26
D-32758 Detmold
Germany

Drawings

www.weidmueller.com

LOCKING-FOOT RIGHT

