

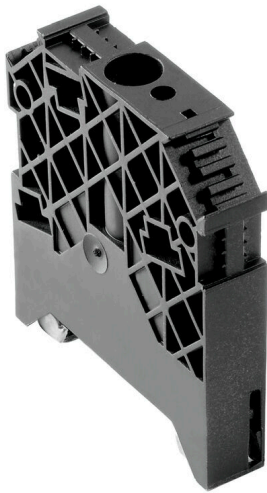
WEW 35/1 SW**Weidmüller Interface GmbH & Co. KG**

Klingenbergstraße 26

D-32758 Detmold

Germany

www.weidmueller.com

Product image

Weidmüller's range of products includes end brackets that guarantee a permanent, reliable mounting on the terminal rail and prevent sliding. Versions with and without screws are available. The end brackets include marking options, also for group markers, and also a test plug holder.

General ordering data

| | |
|------------|---|
| Version | End bracket, black, TS 35, V-2, Wemid, Width: 12 mm, 100 °C |
| Order No. | 1162600000 |
| Type | WEW 35/1 SW |
| GTIN (EAN) | 4032248972630 |
| Qty. | 50 items |

WEW 35/1 SW

Weidmüller Interface GmbH & Co. KG
Klingenbergstraße 26
D-32758 Detmold
Germany

www.weidmueller.com

Technical data

Approvals

| | |
|------|---------|
| ROHS | Conform |
|------|---------|

Dimensions and weights

| | | | |
|------------|---------|-----------------|-------------|
| Depth | 63 mm | Depth (inches) | 2.4803 inch |
| Height | 56 mm | Height (inches) | 2.2047 inch |
| Width | 12 mm | Width (inches) | 0.4724 inch |
| Net weight | 32.98 g | | |

Temperatures

| | | | |
|----------------------------------|---------------|----------------------------------|--------|
| Ambient temperature | -5 °C...40 °C | Continuous operating temp., min. | -50 °C |
| Continuous operating temp., max. | 100 °C | | |

Environmental Product Compliance

| | | | |
|--------------------------|-----------------------------|--|-----------------|
| RoHS Compliance Status | Compliant without exemption | | |
| REACH SVHC | No SVHC above 0.1 wt% | | |
| Product Carbon Footprint | Cradle to gate | | 0.343 kg CO2eq. |

Material data

| | | | |
|---------------------------|-------|--------|-------|
| Basic material | Wemid | Colour | black |
| UL 94 flammability rating | V-2 | | |

System specifications

| | | | |
|---------|-------------------|---------------|-------|
| Version | For the terminals | Mounting rail | TS 35 |
|---------|-------------------|---------------|-------|

Additional technical data

| | | | |
|---------------------|------------------|------------------|-----------------|
| Installation advice | Direct mounting | Type of mounting | when screwed in |
| Locking | for screw fixing | | |

Conductors for clamping (rated connection)

| | | | |
|-------------------------|--------|-------------------------|--------|
| Tightening torque, max. | 2.4 Nm | Tightening torque, min. | 1.2 Nm |
|-------------------------|--------|-------------------------|--------|

General

| | | | |
|---------------------|-----------------|---------------|-------|
| Installation advice | Direct mounting | Mounting rail | TS 35 |
|---------------------|-----------------|---------------|-------|

Classifications

| | | | |
|-------------|-------------|-------------|-------------|
| ETIM 8.0 | EC001041 | ETIM 9.0 | EC001041 |
| ETIM 10.0 | EC001041 | ECLASS 14.0 | 27-25-03-02 |
| ECLASS 15.0 | 27-25-03-02 | | |