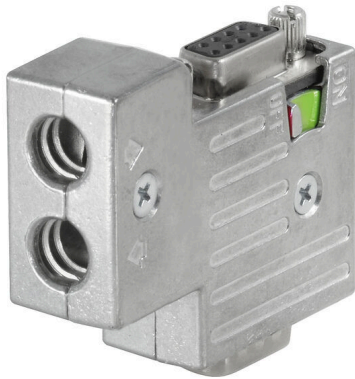


PB-DP SUB-D ZF TERM PS

Weidmüller Interface GmbH & Co. KG
Klingenbergstraße 26
D-32758 Detmold
Germany

www.weidmueller.com



Individual cable lengths are often required nowadays. In order to meet these demands, Weidmüller offers a wide range of plug-in connectors for custom assembly.

General ordering data

Version	SUB-D
Order No.	1161880000
Type	PB-DP SUB-D ZF TERM PS
GTIN (EAN)	4032248950843
Qty.	1 items

PB-DP SUB-D ZF TERM PS

Weidmüller Interface GmbH & Co. KG
 Klingenbergstraße 26
 D-32758 Detmold
 Germany

www.weidmueller.com

Technical data

Approvals

ROHS	Conform
------	---------

Dimensions and weights

Depth	16.8 mm	Depth (inches)	0.6614 inch
Height	53.6 mm	Height (inches)	2.1102 inch
Width	46 mm	Width (inches)	1.811 inch
Net weight	90 g		

Temperatures

Humidity	Max. 75% at +25°C, non-condensing
----------	-----------------------------------

Environmental Product Compliance

RoHS Compliance Status	Compliant with exemption
RoHS Exemption (if applicable/known)	6al
REACH SVHC	Lead 7439-92-1
SCIP	3cc1d9b1-0f2a-47ed-a501-ddcfcfaaf625

Technical specifications for sub-D connector

Tightening torque	0.3 Nm	Housing main material	ZnAl
Humidity	Max. 75% at +25°C, non-condensing	Protection degree	IP30
Plugging cycles	≥ 200	Data rate	12 MBit/s
Outgoing elbow	90°	Terminating resistor available	Yes
BUS interface	D-Sub 9-pole, Pin	Plug-in connector and pin assignment	In accordance with the PROFIBUS specification
Interlock	UNC4-40	Temperature range of housing	-20...+70 °C
BUS PG interface	D-Sub 9-pole, Socket	BUS, cable interface	Tension clamp connection
Programming interface	Yes		

Classifications

ETIM 8.0	EC001132	ETIM 9.0	EC001132
ETIM 10.0	EC001132	ECLASS 14.0	27-44-03-02
ECLASS 15.0	27-44-03-22		

PB-DP SUB-D ZF TERM PS

Weidmüller Interface GmbH & Co. KG
 Klingenbergstraße 26
 D-32758 Detmold
 Germany

Drawings

www.weidmueller.com

Wiring diagram

