

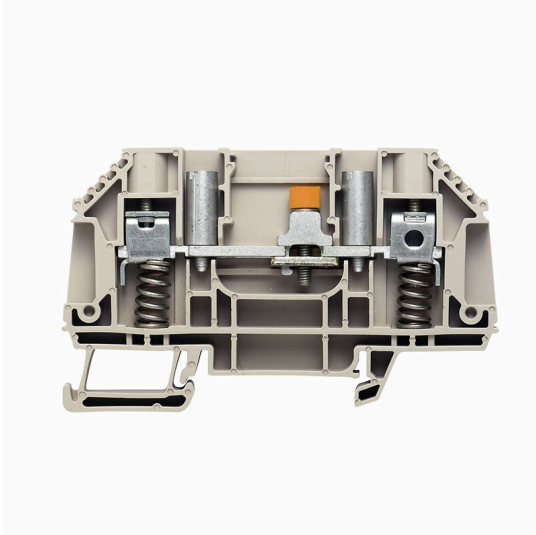
WTL 6 SL**Weidmüller Interface GmbH & Co. KG**

Klingenbergstraße 26

D-32758 Detmold

Germany

www.weidmueller.com

Product image**Current and voltage transformer wiring**

Our test disconnect terminal blocks featuring spring and screw connection technology allow you to create all the important converter circuits for measuring current, voltage and power in a safe and sophisticated way.

General ordering data

| | |
|------------|--|
| Version | Measuring transformer disconnect terminal, Screw connection, 41, 2 |
| Order No. | 1161690000 |
| Type | WTL 6 SL |
| GTIN (EAN) | 4032248950812 |
| Qty. | 50 items |

WTL 6 SL

Weidmüller Interface GmbH & Co. KG
 Klingenbergstraße 26
 D-32758 Detmold
 Germany

www.weidmueller.com

Technical data

Approvals

Approvals



ROHS Conform

Dimensions and weights

| | | | |
|--------------------------|-------------|----------------|-------------|
| Depth | 50 mm | Depth (inches) | 1.9685 inch |
| Depth including DIN rail | 50.5 mm | Height | 82.7 mm |
| Height (inches) | 3.2559 inch | Width | 7.9 mm |
| Width (inches) | 0.311 inch | Net weight | 29.46 g |

Temperatures

| | | | |
|----------------------------------|----------------|----------------------------------|---------------|
| Storage temperature | -25 °C...55 °C | Ambient temperature | -5 °C...40 °C |
| Continuous operating temp., min. | -50 °C | Continuous operating temp., max. | 120 °C |

Environmental Product Compliance

| | |
|--------------------------------------|--------------------------------------|
| RoHS Compliance Status | Compliant with exemption |
| RoHS Exemption (if applicable/known) | 6c |
| REACH SVHC | Lead 7439-92-1 |
| SCIP | 0eb7d846-d0a1-43e5-93a4-d7c6856c4cda |

Material data

| | | | |
|---------------------------|-------|--------|------------|
| Basic material | Wemid | Colour | dark beige |
| UL 94 flammability rating | V-0 | | |

System specifications

| | | | |
|-------------------------------------|---|-------------------------------|-----|
| Version | Screw connection, Special terminal longitudinal isolator, with spring-loaded cable clamp, With sockets, One end without connector | End cover plate required | Yes |
| Number of potentials | 1 | Number of levels | 1 |
| Number of clamping points per level | 2 | Number of potentials per tier | 1 |
| Levels cross-connected internally | No | PE connection | No |
| Mounting rail | TS 35 | N-function | No |
| PE function | No | PEN function | No |

Additional technical data

| | | | |
|------------------|---------|--------------------------|----|
| Open sides | right | Explosion-tested version | No |
| Type of mounting | Snap-on | | |

Conductors for clamping (rated connection)

| | | | |
|-------------------------|------------------|---|--------|
| Gauge to IEC 60947-1 | A5 | Wire connection cross section AWG, max. | AWG 10 |
| Connection direction | on side | Tightening torque, max. | 1.6 Nm |
| Tightening torque, min. | 0.8 Nm | Stripping length | 16 mm |
| Type of connection | Screw connection | Number of connections | 2 |

WTL 6 SL

Weidmüller Interface GmbH & Co. KG

Klingenbergstraße 26
D-32758 Detmold
Germany

www.weidmueller.com

Technical data

| | | | |
|---|---------------------|---|---------------------|
| Clamping range, max. | 6 mm ² | Clamping range, min. | 0.5 mm ² |
| Clamping screw | M 3.5 | Blade size | 0.8 x 4.0 mm |
| Wire connection cross section AWG, min. | AWG 20 | Wire connection cross-section, finely stranded with wire-end ferrules DIN 46228/4, max. | 6 mm ² |
| Wire connection cross-section, finely stranded with wire-end ferrules DIN 46228/4, min. | 0.5 mm ² | Wire connection cross-section, finely stranded with wire-end ferrules DIN 46228/1, max. | 6 mm ² |
| Wire connection cross-section, finely stranded with wire-end ferrules DIN 46228/1, min. | 0.5 mm ² | Wire connection cross section, finely stranded, max. | 6 mm ² |
| Wire connection cross section, finely stranded, min. | 0.5 mm ² | Connection cross-section, stranded, max. | 6 mm ² |
| Connection cross-section, stranded, min. | 1.5 mm ² | Wire connection cross-section, solid core, max. | 6 mm ² |
| Wire connection cross-section, solid core, min. | 0.5 mm ² | | |

Dimensions

| | |
|--------------|-------|
| TS 35 offset | 32 mm |
|--------------|-------|

General

| | | | |
|---|---------------|---|--------|
| Wire connection cross section AWG, max. | AWG 10 | Wire connection cross section AWG, min. | AWG 20 |
| Standards | IEC 60947-7-1 | Mounting rail | TS 35 |

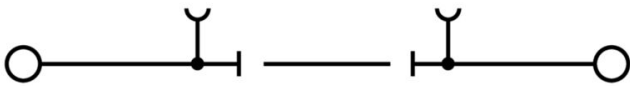
Rating data

| | | | |
|--|-------------------|---------------------------------|---------------|
| Rated cross-section | 6 mm ² | Rated voltage | 500 V |
| Rated DC voltage | 630 V | Nominal current | 41 A |
| Current at maximum wires | 57 A | Standards | IEC 60947-7-1 |
| Volume resistance according to IEC 60947-7-x | 0.78 mΩ | Rated impulse withstand voltage | 6 kV |
| Power loss in accordance with IEC 60947-7-x | 1.31 W | Surge voltage category | III |
| Pollution severity | 2 | | |

Classifications

| | | | |
|-------------|-------------|-------------|-------------|
| ETIM 8.0 | EC000902 | ETIM 9.0 | EC000902 |
| ETIM 10.0 | EC000902 | ECLASS 14.0 | 27-25-01-09 |
| ECLASS 15.0 | 27-25-01-09 | | |

Drawings



WTL 6 SL

Weidmüller Interface GmbH & Co. KG

Klingenbergstraße 26

D-32758 Detmold

Germany

Accessories

www.weidmueller.com

Cross-connections



The distribution or multiplication of a potential to adjoining terminal blocks is realized via a cross-connection. Additional wiring effort can be easily avoided. Even if the poles are broken out, contact reliability in the terminal blocks is still ensured. Our portfolio offers pluggable and screwable cross-connection systems for modular terminal blocks.

General ordering data

| | | |
|------------|----------------------------|--|
| Type | WQV 6/10 | Version |
| Order No. | 1052260000 | Cross-connector (terminal), when screwed in, yellow, 57 A, Number of poles: 10, Pitch in mm (P): 8.00, Insulated: Yes, Width: 7.6 mm |
| GTIN (EAN) | 4008190153977 | |
| Qty. | 20 ST | |
| Type | WQV 6/12 | Version |
| Order No. | 1062720000 | Cross-connector (terminal), when screwed in, yellow, 57 A, Number of poles: 12, Pitch in mm (P): 8.00, Insulated: Yes, Width: 7.6 mm |
| GTIN (EAN) | 4050118259391 | |
| Qty. | 50 ST | |
| Type | WQV 6/2 | Version |
| Order No. | 1052360000 | Cross-connector (terminal), when screwed in, yellow, 57 A, Number of poles: 2, Pitch in mm (P): 8.00, Insulated: Yes, Width: 7.6 mm |
| GTIN (EAN) | 4008190075866 | |
| Qty. | 50 ST | |
| Type | WQV 6/3 | Version |
| Order No. | 1054760000 | Cross-connector (terminal), when screwed in, yellow, 57 A, Number of poles: 3, Pitch in mm (P): 8.00, Insulated: Yes, Width: 7.6 mm |
| GTIN (EAN) | 4008190174163 | |
| Qty. | 50 ST | |
| Type | WQV 6/4 | Version |
| Order No. | 1054860000 | Cross-connector (terminal), when screwed in, yellow, 57 A, Number of poles: 4, Pitch in mm (P): 8.00, Insulated: Yes, Width: 7.6 mm |
| GTIN (EAN) | 4008190180799 | |
| Qty. | 50 ST | |
| Type | WQV 6/6 | Version |
| Order No. | 1062670000 | Cross-connector (terminal), when screwed in, yellow, 57 A, Number of poles: 6, Pitch in mm (P): 8.00, Insulated: Yes, Width: 7.6 mm |
| GTIN (EAN) | 4008190261771 | |
| Qty. | 50 ST | |
| Type | WQV 6/5 | Version |
| Order No. | 1062660000 | Cross-connector (terminal), when screwed in, yellow, 57 A, Number of poles: 5, Pitch in mm (P): 8.00, Insulated: Yes, Width: 7.6 mm |
| GTIN (EAN) | 4008190176914 | |
| Qty. | 50 ST | |
| Type | WQV 6/7 | Version |
| Order No. | 1062680000 | Cross-connector (terminal), when screwed in, yellow, 57 A, Number of poles: 7, Pitch in mm (P): 8.00, Insulated: Yes, Width: 7.6 mm |
| GTIN (EAN) | 4008190261788 | |
| Qty. | 50 ST | |
| Type | WQV 10/6 | Version |
| Order No. | 2226500000 | Cross-connector (terminal), when screwed in, yellow, 63 A, Number of poles: 6, Pitch in mm (P): 9.90, Insulated: Yes, Width: 7.55 mm |
| GTIN (EAN) | 4032248793761 | |
| Qty. | 20 ST | |
| Type | WQV 10/5 | Version |
| Order No. | 2091130000 | Cross-connector (terminal), when screwed in, yellow, 63 A, Number of poles: 5, Pitch in mm (P): 9.90, Insulated: Yes, Width: 7.55 mm |
| GTIN (EAN) | 4008190215903 | |
| Qty. | 20 ST | |

WTL 6 SL

Weidmüller Interface GmbH & Co. KG
 Klingenbergstraße 26
 D-32758 Detmold
 Germany

Accessories

www.weidmueller.com

Disconnect plugs



In contrast to the terminal blocks with integrated disconnect lever, our disconnect plugs can be completely detached or removed from the terminal block and the respective application and offer a flexible alternative solution to our standard disconnectors.

General ordering data

| | | | |
|------------|----------------------------|-----------------------------------|--|
| Type | SSP 3 SAKT1 | Version | |
| Order No. | 0531760000 | Lockout device (terminal), orange | |
| GTIN (EAN) | 4008190130787 | | |
| Qty. | 100 ST | | |

Testadapter and testsockets



Test adapters and test plugs are used for the electrical connection between terminal blocks and the test equipment. In this way, an electrical contact can be established in the wired state and measurements can be done easily.

General ordering data

| | | | |
|------------|----------------------------|---|--|
| Type | GWHUE M3 WTL6 | Version | |
| Order No. | 1255010000 | Connecting sleeve (terminal), when screwed in, Width: 6 mm, Height: 6 mm, Depth: 13.3 mm, Number of poles: 1, Copper - zinc | |
| GTIN (EAN) | 4050118075892 | | |
| Qty. | 50 ST | | |

Accessorie



Current and voltage transformer wiring
 Our test disconnect terminal blocks featuring spring and screw connection technology allow you to create all the important converter circuits for measuring current, voltage and power in a safe and sophisticated way.

General ordering data

| | | | |
|------------|----------------------------|--|--|
| Type | WAP WTL6 SL | Version | |
| Order No. | 9538110000 | End plate for terminals, dark beige, Height: 82.2 mm, Width: 1.5 mm, | |
| GTIN (EAN) | 4008190574994 | V-0, Wemid, Snap-on: No | |
| Qty. | 20 ST | | |

WTL 6 SL

Weidmüller Interface GmbH & Co. KG

Klingenbergstraße 26

D-32758 Detmold

Germany

www.weidmueller.com

Accessories

End plates and partition plates

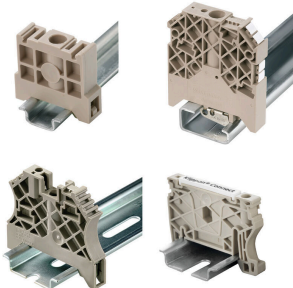


Partition plates and end plates are essential accessories for terminal blocks. Partition plates provide optical and electrical separation of different potentials and functional groups, increasing safety and ensuring a clear structure inside the control cabinet. End plates close the terminal block row on the sides, protect against contact with live parts, and ensure a clean, stable finish. Both components are precisely matched to the respective Weidmüller terminal block series, contributing to safe, compliant, and professional wiring.

General ordering data

| | | |
|------------|----------------------------|--|
| Type | WAP WTL6 SL 4-6 | Version |
| Order No. | 1238880000 | End plate for terminals, dark beige, Height: 82.2 mm, Width: 1.5 mm, |
| GTIN (EAN) | 4050118045680 | V-0, Wemid, Snap-on: No |
| Qty. | 20 ST | |
| Type | WTW EN | Version |
| Order No. | 1058800000 | Partition plate (terminal), dark beige, Height: 86 mm, Width: 3 mm, |
| GTIN (EAN) | 4008190140175 | V-0, Wemid |
| Qty. | 20 ST | |

End bracket

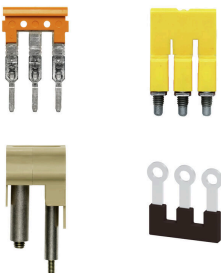


Weidmüller's range of products includes end brackets that guarantee a permanent, reliable mounting on the terminal rail and prevent sliding. Versions with and without screws are available. The end brackets include marking options, also for group markers, and also a test plug holder.

General ordering data

| | | |
|------------|----------------------------|--|
| Type | WEW 35/2 | Version |
| Order No. | 1061200000 | End bracket, dark beige, TS 35, HB, Wemid, Width: 8 mm, 100 °C |
| GTIN (EAN) | 4008190030230 | |
| Qty. | 50 ST | |

Cross-connections



The distribution or multiplication of a potential to adjoining terminal blocks is realized via a cross-connection. Additional wiring effort can be easily avoided. Even if the poles are broken out, contact reliability in the terminal blocks is still ensured. Our portfolio offers pluggable and screwable cross-connection systems for modular terminal blocks.

WTL 6 SL

Weidmüller Interface GmbH & Co. KG
 Klingenbergstraße 26
 D-32758 Detmold
 Germany

www.weidmueller.com

Accessories

General ordering data

| | | |
|------------|----------------------------|---|
| Type | WQV 10/10 | Version |
| Order No. | 1052460000 | Cross-connector (terminal), when screwed in, yellow, 63 A, Number of poles: 10, Pitch in mm (P): 9.90, Insulated: Yes, Width: 7.55 mm |
| GTIN (EAN) | 4008190152130 | |
| Qty. | 20 ST | |
| Type | WQV 10/2 | Version |
| Order No. | 1052560000 | Cross-connector (terminal), when screwed in, yellow, 76 A, Number of poles: 2, Pitch in mm (P): 9.90, Insulated: Yes, Width: 7.55 mm |
| GTIN (EAN) | 4008190154943 | |
| Qty. | 50 ST | |
| Type | WQV 10/3 | Version |
| Order No. | 1054960000 | Cross-connector (terminal), when screwed in, yellow, 63 A, Number of poles: 3, Pitch in mm (P): 9.90, Insulated: Yes, Width: 7.55 mm |
| GTIN (EAN) | 4008190079079 | |
| Qty. | 50 ST | |
| Type | WQV 10/4 | Version |
| Order No. | 1055060000 | Cross-connector (terminal), when screwed in, yellow, 63 A, Number of poles: 4, Pitch in mm (P): 9.90, Insulated: Yes, Width: 7.55 mm |
| GTIN (EAN) | 4008190188245 | |
| Qty. | 50 ST | |

Testadapter and testsockets



Test adapters and test plugs are used for the electrical connection between terminal blocks and the test equipment. In this way, an electrical contact can be established in the wired state and measurements can be done easily.

General ordering data

| | | |
|------------|----------------------------|--|
| Type | STB 21.6/45 BL | Version |
| Order No. | 1936290000 | Socket (terminal), Plug-in depth: 11.1 mm, 0.00 mm, Depth: 45 mm |
| GTIN (EAN) | 4032248606023 | |
| Qty. | 50 ST | |

Accessorie



Current and voltage transformer wiring
 Our test disconnect terminal blocks featuring spring and screw connection technology allow you to create all the important converter circuits for measuring current, voltage and power in a safe and sophisticated way.

General ordering data

| | | |
|------------|----------------------------|--|
| Type | STB 21.6/45 DB | Version |
| Order No. | 1938790000 | Socket (terminal), Plug-in depth: 11.1 mm, 0.00 mm, Depth: 45 mm |
| GTIN (EAN) | 4032248612840 | |
| Qty. | 50 ST | |

WTL 6 SL

Weidmüller Interface GmbH & Co. KG
 Klingenbergstraße 26
 D-32758 Detmold
 Germany

www.weidmueller.com

Accessories

Testadapter and testsockets



Test adapters and test plugs are used for the electrical connection between terminal blocks and the test equipment. In this way, an electrical contact can be established in the wired state and measurements can be done easily.

General ordering data

| | | | |
|------------|----------------------------|--|--|
| Type | STB 21.6/45 GE | Version | |
| Order No. | 1936240000 | Socket (terminal), Plug-in depth: 11.1 mm, 0.00 mm, Depth: 45 mm | |
| GTIN (EAN) | 4032248605972 | | |
| Qty. | 50 ST | | |

Accessorie



Current and voltage transformer wiring
 Our test disconnect terminal blocks featuring spring and screw connection technology allow you to create all the important converter circuits for measuring current, voltage and power in a safe and sophisticated way.

General ordering data

| | | | |
|------------|----------------------------|--|--|
| Type | STB 21.6/45 GN | Version | |
| Order No. | 1936250000 | Socket (terminal), Plug-in depth: 11.1 mm, 0.00 mm, Depth: 45 mm | |
| GTIN (EAN) | 4032248605989 | | |
| Qty. | 50 ST | | |

Testadapter and testsockets



Test adapters and test plugs are used for the electrical connection between terminal blocks and the test equipment. In this way, an electrical contact can be established in the wired state and measurements can be done easily.

General ordering data

| | | | |
|------------|----------------------------|--|--|
| Type | STB 21.6/45 GR | Version | |
| Order No. | 1936280000 | Socket (terminal), Plug-in depth: 11.1 mm, 0.00 mm, Depth: 45 mm | |
| GTIN (EAN) | 4032248606016 | | |
| Qty. | 50 ST | | |

WTL 6 SL

Weidmüller Interface GmbH & Co. KG
 Klingenbergstraße 26
 D-32758 Detmold
 Germany

www.weidmueller.com

Accessories

| | | | |
|------------|----------------------------|--|--|
| Type | STB 21.6/45 RT | Version | |
| Order No. | 1936300000 | Socket (terminal), Plug-in depth: 11.1 mm, 0.00 mm, Depth: 45 mm | |
| GTIN (EAN) | 4032248606030 | | |
| Qty. | 50 ST | | |

Accessorie



Current and voltage transformer wiring
 Our test disconnect terminal blocks featuring spring and screw connection technology allow you to create all the important converter circuits for measuring current, voltage and power in a safe and sophisticated way.

General ordering data

| | | | |
|------------|----------------------------|--|--|
| Type | STB 21.6/45 SW | Version | |
| Order No. | 1936270000 | Socket (terminal), Plug-in depth: 11.1 mm, 0.00 mm, Depth: 45 mm | |
| GTIN (EAN) | 4032248606009 | | |
| Qty. | 50 ST | | |
| Type | STB 21.6/45 VI | Version | |
| Order No. | 1936260000 | Socket (terminal), Plug-in depth: 11.1 mm, 0.00 mm, Depth: 45 mm | |
| GTIN (EAN) | 4032248605996 | | |
| Qty. | 50 ST | | |

Testadapter and testsockets



Test adapters and test plugs are used for the electrical connection between terminal blocks and the test equipment. In this way, an electrical contact can be established in the wired state and measurements can be done easily.

General ordering data

| | | | |
|------------|----------------------------|--|--|
| Type | STB 21.6/IH/BL WTL6/3 | Version | |
| Order No. | 1071080000 | Socket (terminal), Plug-in depth: 11.1 mm, 0.00 mm, Depth: 26.6 mm | |
| GTIN (EAN) | 4008190043957 | | |
| Qty. | 50 ST | | |
| Type | STB 21.6/IH/BR WTL6/3 | Version | |
| Order No. | 2715530000 | Socket (terminal), Plug-in depth: 11.1 mm, 3.00 mm, Depth: 26.6 mm | |
| GTIN (EAN) | 4050118782134 | | |
| Qty. | 50 ST | | |
| Type | STB 21.6/IH/DB WTL6/3 | Version | |
| Order No. | 1071000000 | Socket (terminal), Plug-in depth: 11.1 mm, 0.00 mm, Depth: 26.6 mm | |
| GTIN (EAN) | 4008190259204 | | |
| Qty. | 50 ST | | |

WTL 6 SL

Weidmüller Interface GmbH & Co. KG
 Klingenbergstraße 26
 D-32758 Detmold
 Germany

www.weidmueller.com

Accessories

Accessorie



Current and voltage transformer wiring
 Our test disconnect terminal blocks featuring spring and screw connection technology allow you to create all the important converter circuits for measuring current, voltage and power in a safe and sophisticated way.

General ordering data

| | | |
|------------|----------------------------|--|
| Type | STB 21.6/IH/GE WTL6/3 | Version |
| Order No. | 1071010000 | Socket (terminal), Plug-in depth: 11.1 mm, 0.00 mm, Depth: 26.6 mm |
| GTIN (EAN) | 4008190259211 | |
| Qty. | 50 ST | |

| | | |
|------------|----------------------------|--|
| Type | STB 21.6/IH/GN WTL6/3 | Version |
| Order No. | 1071020000 | Socket (terminal), Plug-in depth: 11.1 mm, 0.00 mm, Depth: 26.6 mm |
| GTIN (EAN) | 4008190259228 | |
| Qty. | 50 ST | |

Testadapter and testsockets



Test adapters and test plugs are used for the electrical connection between terminal blocks and the test equipment. In this way, an electrical contact can be established in the wired state and measurements can be done easily.

General ordering data

| | | |
|------------|----------------------------|--|
| Type | STB 21.6/IH/RT WTL6/3 | Version |
| Order No. | 1778990000 | Socket (terminal), Plug-in depth: 11.1 mm, 0.00 mm, Depth: 26.6 mm |
| GTIN (EAN) | 4032248169665 | |
| Qty. | 50 ST | |

| | | |
|------------|----------------------------|--|
| Type | STB 21.6/IH/SW WTL6/3 | Version |
| Order No. | 1071040000 | Socket (terminal), Plug-in depth: 11.1 mm, 0.00 mm, Depth: 26.6 mm |
| GTIN (EAN) | 4008190859985 | |
| Qty. | 50 ST | |

WTL 6 SL

Weidmüller Interface GmbH & Co. KG
 Klingenbergstraße 26
 D-32758 Detmold
 Germany

www.weidmueller.com

Accessories

Accessorie



Current and voltage transformer wiring
 Our test disconnect terminal blocks featuring spring and screw connection technology allow you to create all the important converter circuits for measuring current, voltage and power in a safe and sophisticated way.

General ordering data

| | | | |
|------------|----------------------------|--|--|
| Type | STB 21.6/IH/VI WTL6/3 | Version | |
| Order No. | 1071030000 | Socket (terminal), Plug-in depth: 11.1 mm, 0.00 mm, Depth: 26.6 mm | |
| GTIN (EAN) | 4008190259235 | | |
| Qty. | 50 ST | | |

| | | | |
|------------|----------------------------|---|--|
| Type | STB 21.6/IH/WS WTL6/3 | Version | |
| Order No. | 1312520000 | Socket (terminal), Plug-in depth: 11.1 mm | |
| GTIN (EAN) | 4050118121704 | | |
| Qty. | 50 ST | | |

Testadapter and testsockets



Test adapters and test plugs are used for the electrical connection between terminal blocks and the test equipment. In this way, an electrical contact can be established in the wired state and measurements can be done easily.

General ordering data

| | | | |
|------------|----------------------------|---|--|
| Type | STB 36.8/IH/BL WTL6/1 | Version | |
| Order No. | 1847790000 | Socket (terminal), Plug-in depth: 11.1 mm, Depth: 39.8 mm | |
| GTIN (EAN) | 4032248379149 | | |
| Qty. | 50 ST | | |

| | | | |
|------------|----------------------------|---|--|
| Type | STB 36.8/IH/DB WTL6/1 | Version | |
| Order No. | 1847740000 | Socket (terminal), Plug-in depth: 11.1 mm, Depth: 39.8 mm | |
| GTIN (EAN) | 4032248379187 | | |
| Qty. | 50 ST | | |

| | | | |
|------------|----------------------------|---|--|
| Type | STB 36.8/IH/GE WTL6/1 | Version | |
| Order No. | 1847760000 | Socket (terminal), Plug-in depth: 11.1 mm, Depth: 39.8 mm | |
| GTIN (EAN) | 4032248379170 | | |
| Qty. | 50 ST | | |

WTL 6 SL

Weidmüller Interface GmbH & Co. KG

Klingenbergstraße 26

D-32758 Detmold

Germany

www.weidmueller.com

Accessories

Accessorie



Current and voltage transformer wiring
Our test disconnect terminal blocks featuring spring and screw connection technology allow you to create all the important converter circuits for measuring current, voltage and power in a safe and sophisticated way.

General ordering data

| | | | |
|------------|----------------------------|---|--|
| Type | STB 36.8/IH/GN WTL6/1 | Version | |
| Order No. | 1847770000 | Socket (terminal), Plug-in depth: 11.1 mm, Depth: 39.8 mm | |
| GTIN (EAN) | 4032248379163 | | |
| Qty. | 50 ST | | |
| Type | STB 36.8/IH/RT WTL6/1 | Version | |
| Order No. | 1312540000 | Socket (terminal), Plug-in depth: 11.1 mm, Depth: 39.8 mm | |
| GTIN (EAN) | 4050118180992 | | |
| Qty. | 50 ST | | |

Testadapter and testsockets



Test adapters and test plugs are used for the electrical connection between terminal blocks and the test equipment. In this way, an electrical contact can be established in the wired state and measurements can be done easily.

General ordering data

| | | | |
|------------|----------------------------|---|--|
| Type | STB 36.8/IH/SW WTL6/1 | Version | |
| Order No. | 1312550000 | Socket (terminal), Plug-in depth: 11.1 mm, Depth: 39.8 mm | |
| GTIN (EAN) | 4050118181210 | | |
| Qty. | 50 ST | | |

Accessorie



Current and voltage transformer wiring
Our test disconnect terminal blocks featuring spring and screw connection technology allow you to create all the important converter circuits for measuring current, voltage and power in a safe and sophisticated way.

WTL 6 SL

Weidmüller Interface GmbH & Co. KG

Klingenbergstraße 26

D-32758 Detmold

Germany

www.weidmueller.com

Accessories

General ordering data

| | | |
|------------|----------------------------|---|
| Type | STB 36.8/IH/VI WTL6/1 | Version |
| Order No. | 1847780000 | Socket (terminal), Plug-in depth: 11.1 mm, Depth: 39.8 mm |
| GTIN (EAN) | 4032248379156 | |
| Qty. | 50 ST | |
| Type | STB 36.8/IH/WS WTL6/1 | Version |
| Order No. | 1312560000 | Socket (terminal), Plug-in depth: 11.1 mm, Depth: 39.8 mm |
| GTIN (EAN) | 4050118181203 | |
| Qty. | 50 ST | |

Cross-connections

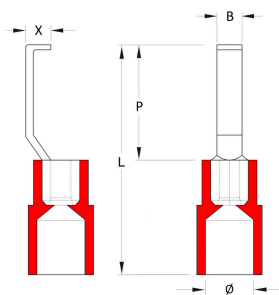


The distribution or multiplication of a potential to adjoining terminal blocks is realized via a cross-connection. Additional wiring effort can be easily avoided. Even if the poles are broken out, contact reliability in the terminal blocks is still ensured. Our portfolio offers pluggable and screwable cross-connection systems for modular terminal blocks.

General ordering data

| | | |
|------------|----------------------------|---|
| Type | VH 19/6.3/4.3 | Version |
| Order No. | 0318000000 | Connecting sleeve (terminal), when screwed in, Width: 6 mm, Height: 6 mm, Depth: 19 mm, Number of poles: 1, Cu Zn |
| GTIN (EAN) | 4008190059460 | |
| Qty. | 50 ST | |

Hook-type cable lugs



The use of insulated connectors guarantees users a permanent and consistent quality for their electrical connections. In addition, they bring advantages during installation.

General ordering data

| | | |
|------------|----------------------------|--|
| Type | HBT 1,5 - 3,0 RT | Version |
| Order No. | 1312440000 | cable lug, terminal end, Insulated cable connector, 1,5 mm ² , 1,5 mm ² - 3 mm ² , red |
| GTIN (EAN) | 4050118115055 | |
| Qty. | 100 ST | |
| Type | HBT 2,5 - 3,0 BL | Version |
| Order No. | 1312450000 | cable lug, terminal end, Insulated cable connector, 2,5 mm ² , 2,5 mm ² - 3 mm ² , blue |
| GTIN (EAN) | 4050118115130 | |
| Qty. | 100 ST | |
| Type | HBT 6,0 - 3,0 GE | Version |
| Order No. | 1312470000 | cable lug, terminal end, Insulated cable connector, 3 mm ² , 3 mm ² - 6 mm ² , yellow |
| GTIN (EAN) | 4050118114980 | |
| Qty. | 100 ST | |

WTL 6 SL

Weidmüller Interface GmbH & Co. KG

Klingenbergstraße 26

D-32758 Detmold

Germany

www.weidmueller.com

Accessories

| | | |
|------------|----------------------------|---|
| Type | HBT 1,5 - 4,6 RT | Version |
| Order No. | 1233340000 | cable lug, terminal end, Insulated cable connector, 1,5 mm ² , 1,5 mm ² - |
| GTIN (EAN) | 4050118210972 | 4.6 mm ² , red |
| Qty. | 100 ST | |
| Type | HBT 2,5 - 4,6 BL | Version |
| Order No. | 1233330000 | cable lug, terminal end, Insulated cable connector, 2,5 mm ² , 2,5 mm ² - |
| GTIN (EAN) | 4050118016901 | 4.6 mm ² , blue |
| Qty. | 100 ST | |
| Type | HBT 6,0 - 4,6 GE | Version |
| Order No. | 1216230000 | cable lug, terminal end, Insulated cable connector, 4,6 mm ² , 4,6 mm ² - |
| GTIN (EAN) | 4050118000337 | 6 mm ² , yellow |
| Qty. | 100 ST | |

Blank



WS markers are the perfect match for the W-series connectors. Thanks to their system compatibility, the WS tags can also be used with the I-series and the Z-series. The large marking surfaces do not only permit long character strings but also multi-line text. WS markers are ideal for labels with long, customised character strings. Thanks to the proven MultiCard format, printing with PrintJet CONNECT oder/or Plotter is possible.

- Can be fitted in strips or individually
- Markers in proven MultiCard format

For custom printing: Please send us a file of our labeling software M-Print PRO or M-Print PRO Online (without installation) for your labeling specifications.

General ordering data

| | | |
|------------|----------------------------|---|
| Type | WS 12/6.5 MC NE WS | Version |
| Order No. | 1609920000 | WS, Terminal marker, 12 x 6.5 mm, Pitch in mm (P): 6.50 |
| GTIN (EAN) | 4008190203511 | Weidmueller, Allen-Bradley, white |
| Qty. | 540 ST | |

Marker holder



The marker holder offer the possibility of additional mounting of standard markers with a pitch of 5 or 5.1 mm. The angled holders can be optionally snapped together and could be mounted in all standard marking channels of the Klippon® Connect modular terminal blocks. Fitting marker types could be found under the respective accessories of the designation marking holder.

General ordering data

| | | |
|------------|----------------------------|----------------------------|
| Type | BZT 1 ZA WS 10/5 | Version |
| Order No. | 1805520000 | Accessories, Marker holder |
| GTIN (EAN) | 4032248270248 | |
| Qty. | 100 ST | |

WTL 6 SL

Weidmüller Interface GmbH & Co. KG
 Klingenbergstraße 26
 D-32758 Detmold
 Germany

www.weidmueller.com

Accessories

| | | | |
|------------|----------------------------|----------------------------|--|
| Type | BZT 1 WS 10/5 | Version | |
| Order No. | 1805490000 | Accessories, Marker holder | |
| GTIN (EAN) | 4032248270231 | | |
| Qty. | 100 ST | | |

Cross-connections



The distribution or multiplication of a potential to adjoining terminal blocks is realized via a cross-connection. Additional wiring effort can be easily avoided. Even if the poles are broken out, contact reliability in the terminal blocks is still ensured. Our portfolio offers pluggable and screwable cross-connection systems for modular terminal blocks.

General ordering data

| | | | |
|------------|----------------------------|---|--|
| Type | QVS 2/S SAKT1+2 | Version | |
| Order No. | 0358460000 | Cross-connector (terminal), when screwed in, beige, 41 A, Number of | |
| GTIN (EAN) | 4008190157937 | poles: 2, Pitch in mm (P): 12.00, Insulated: Yes, Width: 15.4 mm | |
| Qty. | 20 ST | | |

Accessorie



Current and voltage transformer wiring
 Our test disconnect terminal blocks featuring spring and screw connection technology allow you to create all the important converter circuits for measuring current, voltage and power in a safe and sophisticated way.

General ordering data

| | | | |
|------------|----------------------------|---|--|
| Type | QVS 2 SAKT1+2 | Version | |
| Order No. | 0307300000 | Cross-connector (terminal), when screwed in, beige, 41 A, Number of | |
| GTIN (EAN) | 4008190036140 | poles: 2, Pitch in mm (P): 12.00, Insulated: Yes, Width: 15.4 mm | |
| Qty. | 20 ST | | |
| Type | QVS 2/4 SAKT4 | Version | |
| Order No. | 1319260000 | Cross-connector (terminal), when screwed in, orange, 32 A, Number | |
| GTIN (EAN) | 4008190136512 | of poles: 2, Pitch in mm (P): 12.00, Insulated: Yes, Width: 11 mm | |
| Qty. | 20 ST | | |

WTL 6 SL

Weidmüller Interface GmbH & Co. KG

Klingenbergstraße 26

D-32758 Detmold

Germany

www.weidmueller.com

Accessories

Cross-connections



The distribution or multiplication of a potential to adjoining terminal blocks is realized via a cross-connection. Additional wiring effort can be easily avoided. Even if the poles are broken out, contact reliability in the terminal blocks is still ensured. Our portfolio offers pluggable and screwable cross-connection systems for modular terminal blocks.

General ordering data

| | | |
|------------|----------------------------|---|
| Type | QVS 4 SAKT1+2 | Version |
| Order No. | 0307400000 | Cross-connector (terminal), when screwed in, beige, 41 A, Number of |
| GTIN (EAN) | 4008190091941 | poles: 4, Pitch in mm (P): 12.00, Insulated: Yes, Width: 30 mm |
| Qty. | 20 ST | |

Accessorie

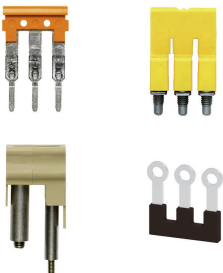


Current and voltage transformer wiring
Our test disconnect terminal blocks featuring spring and screw connection technology allow you to create all the important converter circuits for measuring current, voltage and power in a safe and sophisticated way.

General ordering data

| | | |
|------------|----------------------------|---|
| Type | QVS 3 SAKT1+2 | Version |
| Order No. | 0329300000 | Cross-connector (terminal), when screwed in, beige, 41 A, Number of |
| GTIN (EAN) | 4008190084714 | poles: 3, Pitch in mm (P): 12.00, Insulated: Yes, Width: 22 mm |
| Qty. | 20 ST | |

Cross-connections



The distribution or multiplication of a potential to adjoining terminal blocks is realized via a cross-connection. Additional wiring effort can be easily avoided. Even if the poles are broken out, contact reliability in the terminal blocks is still ensured. Our portfolio offers pluggable and screwable cross-connection systems for modular terminal blocks.

General ordering data

| | | |
|------------|----------------------------|---|
| Type | QVSK 2 SAKT1 | Version |
| Order No. | 1670360000 | Cross-connector (terminal), when screwed in, beige, 57 A, Number of |
| GTIN (EAN) | 4008190431242 | poles: 2, Pitch in mm (P): 12.00, Insulated: Yes, Width: 15.4 mm |
| Qty. | 20 ST | |

WTL 6 SL

Weidmüller Interface GmbH & Co. KG

Klingenbergstraße 26

D-32758 Detmold

Germany

Accessories

www.weidmueller.com

Accessorie



Current and voltage transformer wiring
Our test disconnect terminal blocks featuring spring and screw connection technology allow you to create all the important converter circuits for measuring current, voltage and power in a safe and sophisticated way.

General ordering data

| | | | |
|------------|----------------------------|---|--|
| Type | BS 25 O.IH SAKT1 | Version | |
| Order No. | 0334700000 | Mounting screw (Terminal), 3.00 mm, Brass, Depth: 28.7 mm, Width: | |
| GTIN (EAN) | 4008190118839 | 5.5 mm, Height: 5.5 mm | |
| Qty. | 50 ST | | |

Mounting support



We offer a broad portfolio of mounting support for easy handling and supplementation of our products. From various tools to insulating sleeves and various screws, our components are matched to each other down to the last detail and thus facilitate assembly in compliance with the respective standards and protective regulations.

General ordering data

| | | | |
|------------|----------------------------|---|--|
| Type | BS 25 IH/VI SAKT1 | Version | |
| Order No. | 0335800000 | Mounting screw (Terminal), 3.00 mm, Steel, Brass, Depth: 28.7 mm, | |
| GTIN (EAN) | 4008190039196 | Width: 5.5 mm, Height: 5.5 mm | |
| Qty. | 50 ST | | |
| Type | BS 25 IH/SW SAKT1 | Version | |
| Order No. | 0335200000 | Mounting screw (Terminal), 3.00 mm, Steel, Brass, Depth: 28.7 mm, | |
| GTIN (EAN) | 4008190114039 | Width: 5.5 mm, Height: 5.5 mm | |
| Qty. | 50 ST | | |
| Type | BS 25 IH/RT SAKT1 | Version | |
| Order No. | 0335500000 | Mounting screw (Terminal), 3.00 mm, Steel, Brass, Depth: 28.7 mm, | |
| GTIN (EAN) | 4008190118877 | Width: 5.5 mm, Height: 5.5 mm | |
| Qty. | 50 ST | | |

WTL 6 SL

Weidmüller Interface GmbH & Co. KG

Klingenbergstraße 26

D-32758 Detmold

Germany

Accessories

www.weidmueller.com

Accessorie



Current and voltage transformer wiring

Our test disconnect terminal blocks featuring spring and screw connection technology allow you to create all the important converter circuits for measuring current, voltage and power in a safe and sophisticated way.

General ordering data

| | | | |
|------------|----------------------------|---|--|
| Type | BS 25 IH/GR SAKT1 | Version | |
| Order No. | 0335300000 | Mounting screw (Terminal), 3.00 mm, Steel, Brass, Depth: 28.7 mm, | |
| GTIN (EAN) | 4008190136864 | Width: 5.5 mm, Height: 5.5 mm | |
| Qty. | 50 ST | | |

Mounting support



We offer a broad portfolio of mounting support for easy handling and supplementation of our products. From various tools to insulating sleeves and various screws, our components are matched to each other down to the last detail and thus facilitate assembly in compliance with the respective standards and protective regulations.

General ordering data

| | | | |
|------------|----------------------------|---|--|
| Type | BS 25 IH/GN SAKT1 | Version | |
| Order No. | 0335600000 | Mounting screw (Terminal), 3.00 mm, Steel, Brass, Depth: 28.7 mm, | |
| GTIN (EAN) | 4008190113490 | Width: 5.5 mm, Height: 5.5 mm | |
| Qty. | 50 ST | | |
| Type | BS 25 IH/GE SAKT1 | Version | |
| Order No. | 0335700000 | Mounting screw (Terminal), 3.00 mm, Steel, Brass, Depth: 28.7 mm, | |
| GTIN (EAN) | 4008190189235 | Width: 5.5 mm, Height: 5.5 mm | |
| Qty. | 50 ST | | |

Accessorie



Current and voltage transformer wiring

Our test disconnect terminal blocks featuring spring and screw connection technology allow you to create all the important converter circuits for measuring current, voltage and power in a safe and sophisticated way.

WTL 6 SL

Weidmüller Interface GmbH & Co. KG
 Klingenbergstraße 26
 D-32758 Detmold
 Germany

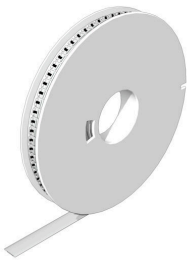
www.weidmueller.com

Accessories

General ordering data

| | | | |
|------------|----------------------------|---|--|
| Type | BS 25 IH/BL SAKT1 | Version | |
| Order No. | 0335400000 | Mounting screw (Terminal), 3.00 mm, Steel, Brass, Depth: 28.7 mm, | |
| GTIN (EAN) | 4008190086879 | Width: 5.5 mm, Height: 5.5 mm | |
| Qty. | 50 ST | | |

WS 12/6.5



WS/ DEK

MultiMark terminal markers use an innovative composite material made from two components. The hard base contour of the marker snaps securely into the connector. The elastic surface finish makes the marker easy to mount. This specially punched material enables the strips to be stretched to accommodate the slight variations in spacing that tend to add up, especially with long terminal blocks. Another advantage: the excellent printability of the surface material guarantees durable and wear-resistant labelling. A print resolution of 300 dpi also produces a very legible script.

Your benefits with MultiMark

- Firm hold and durable printing
- Continuous strips save installation time
- Easy mounting thanks to an innovative composite material
- Large label field for optimal legibility
- High flexibility thanks to manufacturer independence

General ordering data

| | | | |
|------------|----------------------------|--|--|
| Type | WS 12/6.5 MM WS | Version | |
| Order No. | 2619930000 | WS, Terminal marker, 12 x 6.5 mm, Weidmueller, white | |
| GTIN (EAN) | 4050118626155 | | |
| Qty. | 600 ST | | |