

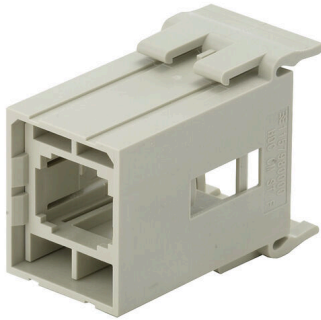
**HDC CM ST F****Weidmüller Interface GmbH & Co. KG**

Klingenbergstraße 26

D-32758 Detmold

Germany

www.weidmueller.com



Flexible and all-purpose – the proper solution for many applications ConCept is a modular system consisting of modules and frames. Together, they form a complete insert that can easily be integrated into an HDC housing. The patented modular system allows you to put together individual connector variants.

A variety of modules for power, signal and data transmission are supplemented further by modules intended for pneumatics, and SC/LC cables.

The sturdy, one-piece module-frame design (optionally available in polycarbonate or die-cast zinc) and the integrated module-release aid both improve handling of the product.

**General ordering data**

Version	Heavy-duty connectors, HDC insert, ConCept module
Order No.	<a href="#">1157980000</a>
Type	HDC CM ST F
GTIN (EAN)	4032248945498
Qty.	1 items

## Technical data

### Approvals

Approvals



ROHS Conform

### Dimensions and weights

Depth	34 mm	Depth (inches)	1.3386 inch
Height	47 mm	Height (inches)	1.8504 inch
Width	22.8 mm	Width (inches)	0.8976 inch
Net weight	12.96 g		

### Temperatures

Limit temperature -40 °C ... 70 °C

### Environmental Product Compliance

RoHS Compliance Status	Compliant without exemption
REACH SVHC	Potassium perfluorobutane sulfonate 29420-49-3
SCIP	1609748e-c278-4c9b-b3d1-e6215d2988cd

### ConCept Pneumatic module

UL 94 flammability rating	V-0	Colour	beige
---------------------------	-----	--------	-------

### Dimensions

Width	22.8 mm	Total length base	34 mm
Height of socket	47 mm		

### General data

Type of connection	RJ45	UL 94 flammability rating	V-0
Volume resistance	≤20 mΩ	Colour	beige
Insulation resistance	≤ 1010 mΩ	Plugging cycles	≥ 500
Type	Female	Basic material	Polycarbonate
Series	ConCept module	Rated voltage (DIN EN 61984)	50 V
Rated impulse voltage (DIN EN 61984)	1 kV	Rated current (DIN EN 61984)	1 A
Free from halogens	false	Low smoke acc. DIN EN 45545-2	Yes

### Version

Type of connection	RJ45	Volume resistance	≤20 mΩ
Basic material	Polycarbonate		

### Classifications

ETIM 8.0	EC000438	ETIM 9.0	EC000438
ETIM 10.0	EC000438	ECLASS 14.0	27-44-02-18
ECLASS 15.0	27-44-02-18		