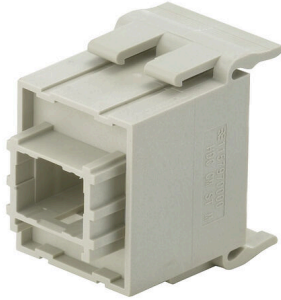


HDC CM ST M**Weidmüller Interface GmbH & Co. KG**Klingenbergstraße 26
D-32758 Detmold
Germany

www.weidmueller.com



Flexible and all-purpose – the proper solution for many applications ConCept is a modular system consisting of modules and frames. Together, they form a complete insert that can easily be integrated into an HDC housing. The patented modular system allows you to put together individual connector variants.

A variety of modules for power, signal and data transmission are supplemented further by modules intended for pneumatics, and SC/LC cables.

The sturdy, one-piece module-frame design (optionally available in polycarbonate or die-cast zinc) and the integrated module-release aid both improve handling of the product.

General ordering data

Version	Heavy-duty connectors, HDC insert, ConCept module
Order No.	1157970000
Type	HDC CM ST M
GTIN (EAN)	403224894548 1
Qty.	1 items

Technical data

Approvals

Approvals



ROHS Conform

Dimensions and weights

Height	37.5 mm	Height (inches)	1.4764 inch
Width	22.8 mm	Width (inches)	0.8976 inch
Length	34 mm	Length (inches)	1.3386 inch
Net weight	21.4 g		

Temperatures

Limit temperature -40 °C ... 70 °C

Environmental Product Compliance

RoHS Compliance Status	Compliant without exemption
REACH SVHC	Potassium perfluorobutane sulfonate 29420-49-3
SCIP	1609748e-c278-4c9b-b3d1-e6215d2988cd

ConCept Pneumatic module

UL 94 flammability rating	V-0	Colour	beige
---------------------------	-----	--------	-------

Dimensions

Width	22.8 mm	Total length base	34 mm
Height of plug	37.5 mm		

General data

Type of connection	RJ45	UL 94 flammability rating	V-0
Volume resistance	≤20 mΩ	Colour	beige
Insulation resistance	≤ 1010 mΩ	Plugging cycles	≥ 500
Type	Pin	Basic material	Polycarbonate
Series	ConCept module	Rated voltage (DIN EN 61984)	50 V
Rated impulse voltage (DIN EN 61984)	1 kV	Rated current (DIN EN 61984)	1 A
Free from halogens	false	Low smoke acc. DIN EN 45545-2	Yes

Version

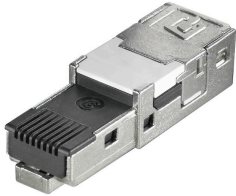
Type of connection	RJ45	Volume resistance	≤20 mΩ
Basic material	Polycarbonate		

Classifications

ETIM 8.0	EC000438	ETIM 9.0	EC000438
ETIM 10.0	EC000438	ECLASS 14.0	27-44-02-18
ECLASS 15.0	27-44-02-18		

Accessories

RJ45



RJ45 inserts for plug-in connectors ver.1 / 4 / 5 / 14, HDC and junction boxes IE-OM...; IE-OP...; IE-CC...

General ordering data

Type	IE-PI-RJ45-FH	Version
Order No.	1962730000	Plug insert RJ45 IDC, Plug insert RJ45, no tools required, TIA-568A,
GTIN (EAN)	4032248654017	EIA/TIA T568 B, PROFINET
Qty.	10 ST	
Type	IE-PI-RJ45-FH-A	Version
Order No.	1132010000	Plug insert RJ45 IDC, Plug insert RJ45, no tools required, TIA-568A
GTIN (EAN)	4032248912001	
Qty.	10 ST	
Type	IE-PI-RJ45-FH-B	Version
Order No.	1132020000	Plug insert RJ45 IDC, Plug insert RJ45, no tools required, EIA/TIA
GTIN (EAN)	4032248912056	T568 B
Qty.	10 ST	
Type	IE-PI-RJ45-FH-P	Version
Order No.	1132030000	Plug insert RJ45 IDC, Plug insert RJ45, no tools required, PROFINET
GTIN (EAN)	4032248912131	
Qty.	10 ST	
Type	IE-PI-RJ45-TH	Version
Order No.	1962720000	Plug insert RJ45 IDC, Plug insert RJ45, crimp
GTIN (EAN)	4032248644834	
Qty.	10 ST	

LWL-SC

FO SC inserts for plug-in connectors ver.1 / 4 / 14



General ordering data

Type	IE-PI-SCRJ-SM	Version
Order No.	1067390000	SC insert, Plug SCRJ, singlemode
GTIN (EAN)	4032248820863	
Qty.	10 ST	

HDC CM ST M

Weidmüller Interface GmbH & Co. KG
 Klingenbergstraße 26
 D-32758 Detmold
 Germany

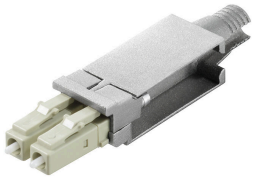
www.weidmueller.com

Accessories

Type	IE-PI-SCRJ-MM	Version
Order No.	1067380000	SC insert, Plug SCRJ, multimode
GTIN (EAN)	4032248821129	
Qty.	10 ST	
Type	IE-PI-SCRJ-POF	Version
Order No.	1067410000	SC insert, Plug SCRJ, POF
GTIN (EAN)	4032248820870	
Qty.	10 ST	

LWL-LC

FO LC inserts for plug-in connectors ver.1 / 4 / 14

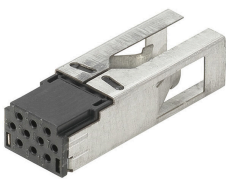


General ordering data

Type	IE-PI-2LC-MM	Version
Order No.	1962780000	LC insert, Plug insert 2 LC, multimode
GTIN (EAN)	4032248644865	
Qty.	10 ST	

Hybrid

Hybrid, 10-pole. Inserts for plug-in connectors Variant 14



General ordering data

Type	IE-PI-HYB-10P	Version
Order No.	1068990000	Insert, for plug insert, Hybrid
GTIN (EAN)	4032248823963	
Qty.	1 ST	
Type	IE-PIC-HYB-S-0,2-300	Version
Order No.	1135150000	Crimp contact, for plug insert, Hybrid
GTIN (EAN)	4032248915347	
Qty.	300 ST	
Type	IE-PIC-HYB-S-0,5-300	Version
Order No.	1096180000	Crimp contact, for plug insert, Hybrid
GTIN (EAN)	4032248869152	
Qty.	300 ST	

HDC CM ST M

Weidmüller Interface GmbH & Co. KG

Klingenbergstraße 26
D-32758 Detmold
Germany

www.weidmueller.com

Accessories

Type	IE-PIC-HYB-S-0,75-300	Version	
Order No.	1068950000		Crimp contact, for plug insert, Hybrid
GTIN (EAN)	4032248823109		
Qty.	300 ST		

... for modular plug-in connectors



Crimping tools for modular plug-in connector systems WE and DEC

- Ratchet guarantees precise crimping
- Release option in the event of incorrect operation
- Three functions in one tool

General ordering data

Type	TT 8 RS MP 8	Version	
Order No.	9202800000		Pressing tools, Crimping tool for contacts
GTIN (EAN)	4032248512072		
Qty.	1 ST		

Tools



The CST with blue blade cartridge produces the best stripping results.

The blue double-stage blade cartridge is particularly suited for Ethernet cables. It saves time and also ensures optimal stripping results.

General ordering data

Type	IE-CST	Version	
Order No.	9204350000		Tools, Sheathing strippers
GTIN (EAN)	4032248653072		
Qty.	1 ST		
Type	AM 12	Version	
Order No.	9030060000		Tools, Sheathing strippers
GTIN (EAN)	4008190337827		
Qty.	1 ST		

Accessorieswww.weidmueller.com**Cutting tools**

Cutting tools for conductors up to 8 mm, 12 mm, 14 mm and 22 mm outside diameter. The special blade geometry allows pinch-free cutting of copper and aluminium conductors with minimum physical effort. The cutting tools (KT 8 to KT 22) also come with VDE and GS-tested protective insulation up to 1,000 V in accordance with EN/IEC 60900.

General ordering data

Type	KT 8	Version	
Order No.	9002650000	Version	Cutting tools, Cutting tool for one-hand operation
GTIN (EAN)	4008190020163		
Qty.	1 ST		