

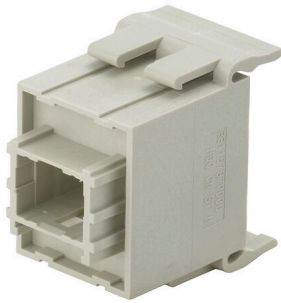
HDC CM ST M**Weidmüller Interface GmbH & Co. KG**

Klingenbergstraße 26

D-32758 Detmold

Germany

www.weidmueller.com



Flexible and all-purpose – the proper solution for many applications ConCept is a modular system consisting of modules and frames. Together, they form a complete insert that can easily be integrated into an HDC housing. The patented modular system allows you to put together individual connector variants.

A variety of modules for power, signal and data transmission are supplemented further by modules intended for pneumatics, and SC/LC cables.

The sturdy, one-piece module-frame design (optionally available in polycarbonate or die-cast zinc) and the integrated module-release aid both improve handling of the product.

General ordering data

Version	Heavy-duty connectors, HDC insert, ConCept module
Order No.	1157970000
Type	HDC CM ST M
GTIN (EAN)	403224894548 1
Qty.	1 items

Technical data

Approvals

Approvals



ROHS Conform

Dimensions and weights

Height	37.5 mm	Height (inches)	1.4764 inch
Width	22.8 mm	Width (inches)	0.8976 inch
Length	34 mm	Length (inches)	1.3386 inch
Net weight	21.4 g		

Temperatures

Limit temperature -40 °C ... 70 °C

Environmental Product Compliance

RoHS Compliance Status	Compliant without exemption
REACH SVHC	Potassium perfluorobutane sulfonate 29420-49-3
SCIP	1609748e-c278-4c9b-b3d1-e6215d2988cd

ConCept Pneumatic module

UL 94 flammability rating	V-0	Colour	beige
---------------------------	-----	--------	-------

Dimensions

Width	22.8 mm	Total length base	34 mm
Height of plug	37.5 mm		

General data

Type of connection	RJ45	UL 94 flammability rating	V-0
Volume resistance	≤20 mΩ	Colour	beige
Insulation resistance	≤ 1010 mΩ	Plugging cycles	≥ 500
Type	Pin	Basic material	Polycarbonate
Series	ConCept module	Rated voltage (DIN EN 61984)	50 V
Rated impulse voltage (DIN EN 61984)	1 kV	Rated current (DIN EN 61984)	1 A
Free from halogens	false	Low smoke acc. DIN EN 45545-2	Yes

Version

Type of connection	RJ45	Volume resistance	≤20 mΩ
Basic material	Polycarbonate		

Classifications

ETIM 8.0	EC000438	ETIM 9.0	EC000438
ETIM 10.0	EC000438	ECLASS 14.0	27-44-02-18
ECLASS 15.0	27-44-02-18		