

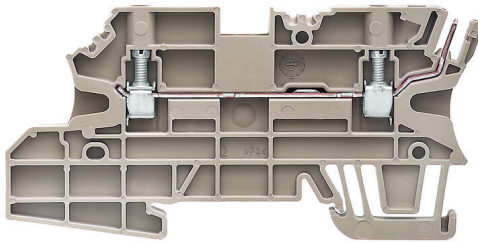
WMF 2.5 BLZ**Weidmüller Interface GmbH & Co. KG**

Klingenbergstraße 26

D-32758 Detmold

Germany

www.weidmueller.com

Product image

In process control systems for facilities in the process and power generation sectors, incoming signals from field devices are often connected with terminal blocks in marshalling cabinets. Terminal blocks are used despite the existence of alternative technologies such as Remote I/O and Fieldbus. This is mainly because they offer a sturdy and simple connection system, and because they are clearly arranged. Our WMF (Weidmüller Multi Funktional) line of terminal blocks provide a multi-functional solution for marshalling signals.

General ordering data

Version	Feed-through terminal block, Screw connection, dark beige, 2.5 mm ² , 24 A, 250 V, Number of connections: 3
Order No.	1143050000
Type	WMF 2.5 BLZ
GTIN (EAN)	4032248926022
Qty.	50 items

WMF 2.5 BLZ

Weidmüller Interface GmbH & Co. KG
 Klingenbergstraße 26
 D-32758 Detmold
 Germany

www.weidmueller.com

Technical data

Approvals

Approvals



ROHS	Conform
UL File Number Search	UL Website
Certificate No. (cURus)	E60693

Dimensions and weights

Depth	44.5 mm	Depth (inches)	1.752 inch
Depth including DIN rail	45 mm	Height	90 mm
Height (inches)	3.5433 inch	Width	5.08 mm
Width (inches)	0.2 inch	Net weight	10.78 g

Temperatures

Storage temperature	-25 °C...55 °C	Ambient temperature	-50 °C...75 °C
Continuous operating temp., min.	-50 °C	Continuous operating temp., max.	120 °C

Environmental Product Compliance

RoHS Compliance Status	Compliant without exemption
REACH SVHC	No SVHC above 0.1 wt%

Material data

Basic material	Wemid	Colour	dark beige
UL 94 flammability rating	V-0		

System specifications

Version	2 screw connections - 1 plug-in connection, for plug-in cross-connector, One end without connector	End cover plate required	Yes
Number of potentials	1	Number of levels	1
Number of clamping points per level	3	Number of potentials per tier	1
Levels cross-connected internally	No	PE connection	No
Mounting rail	TS 35	N-function	No
PE function	No	PEN function	No

Additional technical data

Open sides	right	Explosion-tested version	Yes
Type of mounting	Snap-on		

CSA rating data

Wire cross section max. (CSA)	12 AWG	Certificate No. (CSA)	200039-1057876
Voltage size B (CSA)	300 V	Current size B (CSA)	26 A
Voltage size D (CSA)	300 V	Current size D (CSA)	10 A
Wire cross section min. (CSA)	26 AWG		

WMF 2.5 BLZ

Weidmüller Interface GmbH & Co. KG

Klingenbergstraße 26

D-32758 Detmold

Germany

www.weidmueller.com

Technical data

Conductors for clamping (additional connection)

Connection type, additional connection Plug-in connection

Conductors for clamping (rated connection)

Gauge to IEC 60947-1	A3	Wire connection cross section AWG, max.	AWG 12
Connection direction	on side	Tightening torque, max.	0.6 Nm
Tightening torque, min.	0.5 Nm	Stripping length	10 mm
Type of connection 2	Plug-in connection	Type of connection	Screw connection
Number of connections	3	Clamping range, max.	4 mm ²
Clamping range, min.	0.5 mm ²	Clamping screw	M 3
Blade size	0.6 x 3.5 mm	Wire connection cross section AWG, min.	AWG 26
Wire connection cross-section, finely stranded with wire-end ferrules DIN 46228/4, max.	2.5 mm ²	Wire connection cross-section, finely stranded with wire-end ferrules DIN 46228/4, min.	0.5 mm ²
Wire connection cross-section, finely stranded with wire-end ferrules DIN 46228/1, max.	2.5 mm ²	Wire connection cross-section, finely stranded with wire-end ferrules DIN 46228/1, min.	0.5 mm ²
Wire connection cross section, finely stranded, max.	4 mm ²	Wire connection cross section, finely stranded, min.	0.5 mm ²
Connection cross-section, stranded, max.	4 mm ²	Connection cross-section, stranded, min.	0.5 mm ²
Wire connection cross-section, solid core, max.	4 mm ²	Wire connection cross-section, solid core, min.	0.5 mm ²
Connection cross-section, finely stranded, min.	0.5 mm ²		

General

Wire connection cross section AWG, max.	AWG 12	Wire connection cross section AWG, min.	AWG 26
Standards	IEC 61984, In accordance with IEC 60947-7-1	Mounting rail	TS 35

Rating data

Rated cross-section	2.5 mm ²	Rated voltage	250 V
Rated DC voltage	250 V	Nominal current	24 A
Current at maximum wires	32 A	Standards	IEC 61984, In accordance with IEC 60947-7-1
Volume resistance according to IEC 60947-7-x	1.33 mΩ	Rated impulse withstand voltage	8 kV
Power loss in accordance with IEC 60947-7-x	0.77 W	Surge voltage category	III
Pollution severity	3		

UL rating data

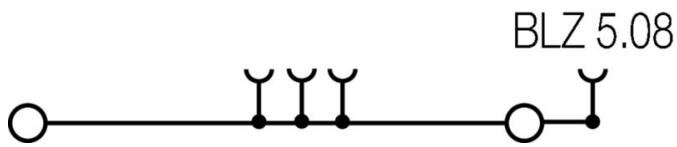
Conductor size Factory wiring max. (cURus)	12 AWG	Voltage size B (cURus)	300 V
Voltage size D (cURus)	300 V	Wire cross section max. (cURus)	12 AWG
Certificate No. (cURus)	E60693	Wire cross section min. (cURus)	26 AWG
Conductor size Field wiring min. (cURus)	26 AWG	Conductor size Factory wiring min. (cURus)	26 AWG
Current size B (cURus)	20 A	Current size D (cURus)	10 A
Conductor size Field wiring max. (cURus)	12 AWG		

Technical data

Classifications

ETIM 8.0	EC000897	ETIM 9.0	EC000897
ETIM 10.0	EC000897	ECLASS 14.0	27-25-01-01
ECLASS 15.0	27-25-01-01		

Drawings



WMF 2.5 BLZ

Weidmüller Interface GmbH & Co. KG
 Klingenbergstraße 26
 D-32758 Detmold
 Germany

www.weidmueller.com

Accessories

Accessories



The comprehensive accessories of the Klippon® Connect portfolio are perfectly matched down to the last detail. This facilitates mounting while adhering to required norms

General ordering data

Type	AP WMF2.5	Version	
Order No.	1142990000	End plate for terminals, beige, Height: 87.25 mm, Width: 1.5 mm,	
GTIN (EAN)	4032248925889	V-0, Wemid, Snap-on: Yes	
Qty.	50 ST		

End bracket



Weidmüller's range of products includes end brackets that guarantee a permanent, reliable mounting on the terminal rail and prevent sliding. Versions with and without screws are available. The end brackets include marking options, also for group markers, and also a test plug holder.

General ordering data

Type	WEW 35/2	Version	
Order No.	1061200000	End bracket, dark beige, TS 35, HB, Wemid, Width: 8 mm, 100 °C	
GTIN (EAN)	4008190030230		
Qty.	50 ST		

Accessories



The comprehensive accessories of the Klippon® Connect portfolio are perfectly matched down to the last detail. This facilitates mounting while adhering to required norms

General ordering data

Type	WBB WMF2.5 BLZ	Version	
Order No.	1142980000	Partition plate (terminal), dark beige, Height: 88.5 mm, Width: 5.08 mm, V-0, Wemid	
GTIN (EAN)	4032248925896		
Qty.	10 ST		

WMF 2.5 BLZ

Weidmüller Interface GmbH & Co. KG

Klingenbergstraße 26
D-32758 Detmold
Germany

www.weidmueller.com

Accessories

Type	IL WMF2.5 BLZ OR	Version
Order No.	1167440000	Locking clips (terminal), PA 66, orange
GTIN (EAN)	4032248958474	
Qty.	50 ST	

Slotted screwdriver

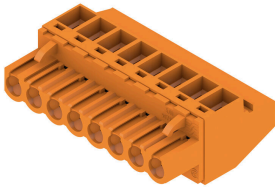


Slotted screwdriver with rounded blade SD DIN 5265, ISO 2380/2, output to DIN 5264, ISO 2380/1. ChromTop tip, SoftFinish grip

General ordering data

Type	SDS 0.6X3.5X100	Version
Order No.	9008330000	Screwdriver, Screwdriver
GTIN (EAN)	4032248056286	
Qty.	1 ST	

BLZP 5.08HC/90 SN



Female plugs with clamping-yoke connection for connecting wires with a right-angle (90° or 270°) outlet direction. The female connectors provide space for labelling and can be coded. Fastened by means of a flange or release latch. They also provide an integrated plus/minus screw, protection against faulty insertion of the wire, and they are delivered with open clamping yokes. HC = High Current.

General ordering data

Type	BLZP 5.08HC/02/90 SN BK...	Version
Order No.	1948240000	PCB plug-in connector, female plug, 5.08 mm, Number of poles: 2, 90°, Clamping yoke connection, Clamping range, max. : 4 mm², Box
GTIN (EAN)	4032248624768	
Qty.	180 ST	
Type	BLZP 5.08HC/02/90 SN OR...	Version
Order No.	1948000000	PCB plug-in connector, female plug, 5.08 mm, Number of poles: 2, 90°, Clamping yoke connection, Clamping range, max. : 4 mm², Box
GTIN (EAN)	4032248624225	
Qty.	180 ST	
Type	BLZP 5.08HC/03/90 SN BK...	Version
Order No.	1948250000	PCB plug-in connector, female plug, 5.08 mm, Number of poles: 3, 90°, Clamping yoke connection, Clamping range, max. : 4 mm², Box
GTIN (EAN)	4032248624775	
Qty.	120 ST	
Type	BLZP 5.08HC/03/90 SN OR...	Version
Order No.	1948010000	PCB plug-in connector, female plug, 5.08 mm, Number of poles: 3, 90°, Clamping yoke connection, Clamping range, max. : 4 mm², Box
GTIN (EAN)	4032248624232	
Qty.	120 ST	

WMF 2.5 BLZ

Weidmüller Interface GmbH & Co. KG
 Klingenbergstraße 26
 D-32758 Detmold
 Germany

www.weidmueller.com

Accessories

Type	BLZP 5.08HC/04/90 SN BK...	Version
Order No.	1948260000	PCB plug-in connector, female plug, 5.08 mm, Number of poles: 4,
GTIN (EAN)	4032248624782	90°, Clamping yoke connection, Clamping range, max. : 4 mm², Box
Qty.	90 ST	
Type	BLZP 5.08HC/04/90 SN OR...	Version
Order No.	1948020000	PCB plug-in connector, female plug, 5.08 mm, Number of poles: 4,
GTIN (EAN)	4032248624249	90°, Clamping yoke connection, Clamping range, max. : 4 mm², Box
Qty.	90 ST	
Type	BLZP 5.08HC/05/90 SN BK...	Version
Order No.	1948270000	PCB plug-in connector, female plug, 5.08 mm, Number of poles: 5,
GTIN (EAN)	4032248624799	90°, Clamping yoke connection, Clamping range, max. : 4 mm², Box
Qty.	72 ST	
Type	BLZP 5.08HC/05/90 SN OR...	Version
Order No.	1948030000	PCB plug-in connector, female plug, 5.08 mm, Number of poles: 5,
GTIN (EAN)	4032248624256	90°, Clamping yoke connection, Clamping range, max. : 4 mm², Box
Qty.	72 ST	
Type	BLZP 5.08HC/06/90 SN BK...	Version
Order No.	1948280000	PCB plug-in connector, female plug, 5.08 mm, Number of poles: 6,
GTIN (EAN)	4032248624805	90°, Clamping yoke connection, Clamping range, max. : 4 mm², Box
Qty.	60 ST	
Type	BLZP 5.08HC/06/90 SN OR...	Version
Order No.	1948040000	PCB plug-in connector, female plug, 5.08 mm, Number of poles: 6,
GTIN (EAN)	4032248624263	90°, Clamping yoke connection, Clamping range, max. : 4 mm², Box
Qty.	60 ST	
Type	BLZP 5.08HC/07/90 SN BK...	Version
Order No.	1948290000	PCB plug-in connector, female plug, 5.08 mm, Number of poles: 7,
GTIN (EAN)	4032248624812	90°, Clamping yoke connection, Clamping range, max. : 4 mm², Box
Qty.	48 ST	
Type	BLZP 5.08HC/07/90 SN OR...	Version
Order No.	1948050000	PCB plug-in connector, female plug, 5.08 mm, Number of poles: 7,
GTIN (EAN)	4032248624270	90°, Clamping yoke connection, Clamping range, max. : 4 mm², Box
Qty.	48 ST	
Type	BLZP 5.08HC/08/90 SN BK...	Version
Order No.	1948300000	PCB plug-in connector, female plug, 5.08 mm, Number of poles: 8,
GTIN (EAN)	4032248624829	90°, Clamping yoke connection, Clamping range, max. : 4 mm², Box
Qty.	42 ST	
Type	BLZP 5.08HC/08/90 SN OR...	Version
Order No.	1948060000	PCB plug-in connector, female plug, 5.08 mm, Number of poles: 8,
GTIN (EAN)	4032248624287	90°, Clamping yoke connection, Clamping range, max. : 4 mm², Box
Qty.	42 ST	
Type	BLZP 5.08HC/09/90 SN BK...	Version
Order No.	1948310000	PCB plug-in connector, female plug, 5.08 mm, Number of poles: 9,
GTIN (EAN)	4032248624836	90°, Clamping yoke connection, Clamping range, max. : 4 mm², Box
Qty.	36 ST	
Type	BLZP 5.08HC/09/90 SN OR...	Version
Order No.	1948070000	PCB plug-in connector, female plug, 5.08 mm, Number of poles: 9,
GTIN (EAN)	4032248624294	90°, Clamping yoke connection, Clamping range, max. : 4 mm², Box
Qty.	36 ST	
Type	BLZP 5.08HC/10/90 SN BK...	Version
Order No.	1948320000	PCB plug-in connector, female plug, 5.08 mm, Number of poles: 10,
GTIN (EAN)	4032248624843	90°, Clamping yoke connection, Clamping range, max. : 4 mm², Box
Qty.	36 ST	

WMF 2.5 BLZ

Weidmüller Interface GmbH & Co. KG
 Klingenbergstraße 26
 D-32758 Detmold
 Germany

www.weidmueller.com

Accessories

Type	BLZP 5.08HC/10/90 SN OR...	Version
Order No.	1948080000	PCB plug-in connector, female plug, 5.08 mm, Number of poles: 10,
GTIN (EAN)	4032248624300	90°, Clamping yoke connection, Clamping range, max. : 4 mm ² , Box
Qty.	36 ST	
Type	BLZP 5.08HC/11/90 SN BK...	Version
Order No.	1948330000	PCB plug-in connector, female plug, 5.08 mm, Number of poles: 11,
GTIN (EAN)	4032248624850	90°, Clamping yoke connection, Clamping range, max. : 4 mm ² , Box
Qty.	30 ST	
Type	BLZP 5.08HC/11/90 SN OR...	Version
Order No.	1948100000	PCB plug-in connector, female plug, 5.08 mm, Number of poles: 11,
GTIN (EAN)	4032248624522	90°, Clamping yoke connection, Clamping range, max. : 4 mm ² , Box
Qty.	30 ST	
Type	BLZP 5.08HC/12/90 SN BK...	Version
Order No.	1948340000	PCB plug-in connector, female plug, 5.08 mm, Number of poles: 12,
GTIN (EAN)	4032248624867	90°, Clamping yoke connection, Clamping range, max. : 4 mm ² , Box
Qty.	30 ST	
Type	BLZP 5.08HC/12/90 SN OR...	Version
Order No.	1948110000	PCB plug-in connector, female plug, 5.08 mm, Number of poles: 12,
GTIN (EAN)	4032248624539	90°, Clamping yoke connection, Clamping range, max. : 4 mm ² , Box
Qty.	30 ST	
Type	BLZP 5.08HC/13/90 SN BK...	Version
Order No.	1948350000	PCB plug-in connector, female plug, 5.08 mm, Number of poles: 13,
GTIN (EAN)	4032248624874	90°, Clamping yoke connection, Clamping range, max. : 4 mm ² , Box
Qty.	24 ST	
Type	BLZP 5.08HC/13/90 SN OR...	Version
Order No.	1948120000	PCB plug-in connector, female plug, 5.08 mm, Number of poles: 13,
GTIN (EAN)	4032248624546	90°, Clamping yoke connection, Clamping range, max. : 4 mm ² , Box
Qty.	24 ST	
Type	BLZP 5.08HC/14/90 SN BK...	Version
Order No.	1948360000	PCB plug-in connector, female plug, 5.08 mm, Number of poles: 14,
GTIN (EAN)	4032248624881	90°, Clamping yoke connection, Clamping range, max. : 4 mm ² , Box
Qty.	24 ST	
Type	BLZP 5.08HC/14/90 SN OR...	Version
Order No.	1948130000	PCB plug-in connector, female plug, 5.08 mm, Number of poles: 14,
GTIN (EAN)	4032248624553	90°, Clamping yoke connection, Clamping range, max. : 4 mm ² , Box
Qty.	24 ST	
Type	BLZP 5.08HC/15/90 SN BK...	Version
Order No.	1948370000	PCB plug-in connector, female plug, 5.08 mm, Number of poles: 15,
GTIN (EAN)	4032248624898	90°, Clamping yoke connection, Clamping range, max. : 4 mm ² , Box
Qty.	24 ST	
Type	BLZP 5.08HC/15/90 SN OR...	Version
Order No.	1948140000	PCB plug-in connector, female plug, 5.08 mm, Number of poles: 15,
GTIN (EAN)	4032248624560	90°, Clamping yoke connection, Clamping range, max. : 4 mm ² , Box
Qty.	24 ST	
Type	BLZP 5.08HC/16/90 SN BK...	Version
Order No.	1948380000	PCB plug-in connector, female plug, 5.08 mm, Number of poles: 16,
GTIN (EAN)	4032248624904	90°, Clamping yoke connection, Clamping range, max. : 4 mm ² , Box
Qty.	18 ST	
Type	BLZP 5.08HC/16/90 SN OR...	Version
Order No.	1948150000	PCB plug-in connector, female plug, 5.08 mm, Number of poles: 16,
GTIN (EAN)	4032248624577	90°, Clamping yoke connection, Clamping range, max. : 4 mm ² , Box
Qty.	18 ST	

WMF 2.5 BLZ

Weidmüller Interface GmbH & Co. KG
 Klingenbergstraße 26
 D-32758 Detmold
 Germany

Accessories

www.weidmueller.com

BLZP 5.08HC/90F SN



Female plugs with clamping-yoke connection for connecting wires with a right-angle (90° or 270°) outlet direction. The female connectors provide space for labelling and can be coded. Fastened by means of a flange or release latch. They also provide an integrated plus/minus screw, protection against faulty insertion of the wire, and they are delivered with open clamping yokes. HC = High Current.

General ordering data

Type	BLZP 5.08HC/02/90F SN B...	Version
Order No.	1950040000	PCB plug-in connector, female plug, 5.08 mm, Number of poles: 2,
GTIN (EAN)	4032248627974	90°, Clamping yoke connection, Clamping range, max. : 4 mm ² , Box
Qty.	90 ST	
Type	BLZP 5.08HC/02/90F SN O...	Version
Order No.	1949800000	PCB plug-in connector, female plug, 5.08 mm, Number of poles: 2,
GTIN (EAN)	4032248627721	90°, Clamping yoke connection, Clamping range, max. : 4 mm ² , Box
Qty.	90 ST	
Type	BLZP 5.08HC/03/90F SN B...	Version
Order No.	1950050000	PCB plug-in connector, female plug, 5.08 mm, Number of poles: 3,
GTIN (EAN)	4032248627981	90°, Clamping yoke connection, Clamping range, max. : 4 mm ² , Box
Qty.	72 ST	
Type	BLZP 5.08HC/03/90F SN O...	Version
Order No.	1949810000	PCB plug-in connector, female plug, 5.08 mm, Number of poles: 3,
GTIN (EAN)	4032248627738	90°, Clamping yoke connection, Clamping range, max. : 4 mm ² , Box
Qty.	72 ST	
Type	BLZP 5.08HC/04/90F SN B...	Version
Order No.	1950060000	PCB plug-in connector, female plug, 5.08 mm, Number of poles: 4,
GTIN (EAN)	4032248627998	90°, Clamping yoke connection, Clamping range, max. : 4 mm ² , Box
Qty.	60 ST	
Type	BLZP 5.08HC/04/90F SN O...	Version
Order No.	1949820000	PCB plug-in connector, female plug, 5.08 mm, Number of poles: 4,
GTIN (EAN)	4032248627745	90°, Clamping yoke connection, Clamping range, max. : 4 mm ² , Box
Qty.	60 ST	
Type	BLZP 5.08HC/05/90F SN B...	Version
Order No.	1950070000	PCB plug-in connector, female plug, 5.08 mm, Number of poles: 5,
GTIN (EAN)	4032248628001	90°, Clamping yoke connection, Clamping range, max. : 4 mm ² , Box
Qty.	48 ST	
Type	BLZP 5.08HC/05/90F SN O...	Version
Order No.	1949830000	PCB plug-in connector, female plug, 5.08 mm, Number of poles: 5,
GTIN (EAN)	4032248627752	90°, Clamping yoke connection, Clamping range, max. : 4 mm ² , Box
Qty.	48 ST	
Type	BLZP 5.08HC/06/90F SN B...	Version
Order No.	1950080000	PCB plug-in connector, female plug, 5.08 mm, Number of poles: 6,
GTIN (EAN)	4032248628018	90°, Clamping yoke connection, Clamping range, max. : 4 mm ² , Box
Qty.	42 ST	
Type	BLZP 5.08HC/06/90F SN G...	Version
Order No.	1284860000	PCB plug-in connector, female plug, 5.08 mm, Number of poles: 6,
GTIN (EAN)	4050118075410	90°, Clamping yoke connection, Clamping range, max. : 4 mm ² , Box
Qty.	42 ST	

WMF 2.5 BLZ

Weidmüller Interface GmbH & Co. KG
 Klingenbergstraße 26
 D-32758 Detmold
 Germany

Accessories

www.weidmueller.com

Type	BLZP 5.08HC/06/90F SN O...	Version
Order No.	1949840000	PCB plug-in connector, female plug, 5.08 mm, Number of poles: 6,
GTIN (EAN)	4032248627769	90°, Clamping yoke connection, Clamping range, max. : 4 mm², Box
Qty.	42 ST	
Type	BLZP 5.08HC/07/90F SN B...	Version
Order No.	1950090000	PCB plug-in connector, female plug, 5.08 mm, Number of poles: 7,
GTIN (EAN)	4032248628025	90°, Clamping yoke connection, Clamping range, max. : 4 mm², Box
Qty.	36 ST	
Type	BLZP 5.08HC/07/90F SN O...	Version
Order No.	1949850000	PCB plug-in connector, female plug, 5.08 mm, Number of poles: 7,
GTIN (EAN)	4032248627776	90°, Clamping yoke connection, Clamping range, max. : 4 mm², Box
Qty.	36 ST	
Type	BLZP 5.08HC/08/90F SN B...	Version
Order No.	1950100000	PCB plug-in connector, female plug, 5.08 mm, Number of poles: 8,
GTIN (EAN)	4032248628032	90°, Clamping yoke connection, Clamping range, max. : 4 mm², Box
Qty.	36 ST	
Type	BLZP 5.08HC/08/90F SN O...	Version
Order No.	1949860000	PCB plug-in connector, female plug, 5.08 mm, Number of poles: 8,
GTIN (EAN)	4032248627783	90°, Clamping yoke connection, Clamping range, max. : 4 mm², Box
Qty.	36 ST	
Type	BLZP 5.08HC/09/90F SN B...	Version
Order No.	1950110000	PCB plug-in connector, female plug, 5.08 mm, Number of poles: 9,
GTIN (EAN)	4032248628049	90°, Clamping yoke connection, Clamping range, max. : 4 mm², Box
Qty.	30 ST	
Type	BLZP 5.08HC/09/90F SN O...	Version
Order No.	1949870000	PCB plug-in connector, female plug, 5.08 mm, Number of poles: 9,
GTIN (EAN)	4032248627790	90°, Clamping yoke connection, Clamping range, max. : 4 mm², Box
Qty.	30 ST	
Type	BLZP 5.08HC/10/90F SN B...	Version
Order No.	1950120000	PCB plug-in connector, female plug, 5.08 mm, Number of poles: 10,
GTIN (EAN)	4032248628056	90°, Clamping yoke connection, Clamping range, max. : 4 mm², Box
Qty.	30 ST	
Type	BLZP 5.08HC/10/90F SN O...	Version
Order No.	1949880000	PCB plug-in connector, female plug, 5.08 mm, Number of poles: 10,
GTIN (EAN)	4032248627806	90°, Clamping yoke connection, Clamping range, max. : 4 mm², Box
Qty.	30 ST	
Type	BLZP 5.08HC/11/90F SN B...	Version
Order No.	1950130000	PCB plug-in connector, female plug, 5.08 mm, Number of poles: 11,
GTIN (EAN)	4032248628063	90°, Clamping yoke connection, Clamping range, max. : 4 mm², Box
Qty.	24 ST	
Type	BLZP 5.08HC/11/90F SN O...	Version
Order No.	1949890000	PCB plug-in connector, female plug, 5.08 mm, Number of poles: 11,
GTIN (EAN)	4032248627813	90°, Clamping yoke connection, Clamping range, max. : 4 mm², Box
Qty.	24 ST	
Type	BLZP 5.08HC/12/90F SN B...	Version
Order No.	1950140000	PCB plug-in connector, female plug, 5.08 mm, Number of poles: 12,
GTIN (EAN)	4032248628070	90°, Clamping yoke connection, Clamping range, max. : 4 mm², Box
Qty.	24 ST	
Type	BLZP 5.08HC/12/90F SN O...	Version
Order No.	1949900000	PCB plug-in connector, female plug, 5.08 mm, Number of poles: 12,
GTIN (EAN)	4032248627837	90°, Clamping yoke connection, Clamping range, max. : 4 mm², Box
Qty.	24 ST	

WMF 2.5 BLZ

Weidmüller Interface GmbH & Co. KG
 Klingenbergstraße 26
 D-32758 Detmold
 Germany

www.weidmueller.com

Accessories

Type	BLZP 5.08HC/13/90F SN B...	Version
Order No.	1950150000	PCB plug-in connector, female plug, 5.08 mm, Number of poles: 13,
GTIN (EAN)	4032248628087	90°, Clamping yoke connection, Clamping range, max. : 4 mm², Box
Qty.	24 ST	
Type	BLZP 5.08HC/13/90F SN O...	Version
Order No.	1949910000	PCB plug-in connector, female plug, 5.08 mm, Number of poles: 13,
GTIN (EAN)	4032248627844	90°, Clamping yoke connection, Clamping range, max. : 4 mm², Box
Qty.	24 ST	
Type	BLZP 5.08HC/14/90F SN B...	Version
Order No.	1950160000	PCB plug-in connector, female plug, 5.08 mm, Number of poles: 14,
GTIN (EAN)	4032248628094	90°, Clamping yoke connection, Clamping range, max. : 4 mm², Box
Qty.	18 ST	
Type	BLZP 5.08HC/14/90F SN O...	Version
Order No.	1949920000	PCB plug-in connector, female plug, 5.08 mm, Number of poles: 14,
GTIN (EAN)	4032248627851	90°, Clamping yoke connection, Clamping range, max. : 4 mm², Box
Qty.	18 ST	
Type	BLZP 5.08HC/15/90F SN B...	Version
Order No.	1950170000	PCB plug-in connector, female plug, 5.08 mm, Number of poles: 15,
GTIN (EAN)	4032248628100	90°, Clamping yoke connection, Clamping range, max. : 4 mm², Box
Qty.	18 ST	
Type	BLZP 5.08HC/15/90F SN O...	Version
Order No.	1949930000	PCB plug-in connector, female plug, 5.08 mm, Number of poles: 15,
GTIN (EAN)	4032248627868	90°, Clamping yoke connection, Clamping range, max. : 4 mm², Box
Qty.	18 ST	
Type	BLZP 5.08HC/16/90F SN B...	Version
Order No.	1950180000	PCB plug-in connector, female plug, 5.08 mm, Number of poles: 16,
GTIN (EAN)	4032248628117	90°, Clamping yoke connection, Clamping range, max. : 4 mm², Box
Qty.	18 ST	
Type	BLZP 5.08HC/16/90F SN O...	Version
Order No.	1949940000	PCB plug-in connector, female plug, 5.08 mm, Number of poles: 16,
GTIN (EAN)	4032248627875	90°, Clamping yoke connection, Clamping range, max. : 4 mm², Box
Qty.	18 ST	
Type	BLZP 5.08HC/17/90F SN B...	Version
Order No.	1950190000	PCB plug-in connector, female plug, 5.08 mm, Number of poles: 17,
GTIN (EAN)	4032248628124	90°, Clamping yoke connection, Clamping range, max. : 4 mm², Box
Qty.	18 ST	
Type	BLZP 5.08HC/17/90F SN O...	Version
Order No.	1949950000	PCB plug-in connector, female plug, 5.08 mm, Number of poles: 17,
GTIN (EAN)	4032248627882	90°, Clamping yoke connection, Clamping range, max. : 4 mm², Box
Qty.	18 ST	
Type	BLZP 5.08HC/18/90F SN B...	Version
Order No.	1950200000	PCB plug-in connector, female plug, 5.08 mm, Number of poles: 18,
GTIN (EAN)	4032248628131	90°, Clamping yoke connection, Clamping range, max. : 4 mm², Box
Qty.	18 ST	
Type	BLZP 5.08HC/18/90F SN O...	Version
Order No.	1949960000	PCB plug-in connector, female plug, 5.08 mm, Number of poles: 18,
GTIN (EAN)	4032248627899	90°, Clamping yoke connection, Clamping range, max. : 4 mm², Box
Qty.	18 ST	
Type	BLZP 5.08HC/19/90F SN B...	Version
Order No.	1950210000	PCB plug-in connector, female plug, 5.08 mm, Number of poles: 19,
GTIN (EAN)	4032248628148	90°, Clamping yoke connection, Clamping range, max. : 4 mm², Box
Qty.	12 ST	

WMF 2.5 BLZ

Weidmüller Interface GmbH & Co. KG
 Klingenbergstraße 26
 D-32758 Detmold
 Germany

Accessories

www.weidmueller.com

Type	BLZP 5.08HC/19/90F SN O...	Version
Order No.	1949970000	PCB plug-in connector, female plug, 5.08 mm, Number of poles: 19,
GTIN (EAN)	4032248627905	90°, Clamping yoke connection, Clamping range, max. : 4 mm ² , Box
Qty.	12 ST	
Type	BLZP 5.08HC/20/90F SN B...	Version
Order No.	1950220000	PCB plug-in connector, female plug, 5.08 mm, Number of poles: 20,
GTIN (EAN)	4032248628155	90°, Clamping yoke connection, Clamping range, max. : 4 mm ² , Box
Qty.	12 ST	
Type	BLZP 5.08HC/20/90F SN O...	Version
Order No.	1949980000	PCB plug-in connector, female plug, 5.08 mm, Number of poles: 20,
GTIN (EAN)	4032248627912	90°, Clamping yoke connection, Clamping range, max. : 4 mm ² , Box
Qty.	12 ST	
Type	BLZP 5.08HC/21/90F SN B...	Version
Order No.	1950230000	PCB plug-in connector, female plug, 5.08 mm, Number of poles: 21,
GTIN (EAN)	4032248628162	90°, Clamping yoke connection, Clamping range, max. : 4 mm ² , Box
Qty.	12 ST	
Type	BLZP 5.08HC/21/90F SN O...	Version
Order No.	1949990000	PCB plug-in connector, female plug, 5.08 mm, Number of poles: 21,
GTIN (EAN)	4032248627929	90°, Clamping yoke connection, Clamping range, max. : 4 mm ² , Box
Qty.	12 ST	
Type	BLZP 5.08HC/22/90F SN B...	Version
Order No.	1950240000	PCB plug-in connector, female plug, 5.08 mm, Number of poles: 22,
GTIN (EAN)	4032248628179	90°, Clamping yoke connection, Clamping range, max. : 4 mm ² , Box
Qty.	12 ST	
Type	BLZP 5.08HC/22/90F SN O...	Version
Order No.	1950010000	PCB plug-in connector, female plug, 5.08 mm, Number of poles: 22,
GTIN (EAN)	4032248627936	90°, Clamping yoke connection, Clamping range, max. : 4 mm ² , Box
Qty.	12 ST	
Type	BLZP 5.08HC/23/90F SN B...	Version
Order No.	1950250000	PCB plug-in connector, female plug, 5.08 mm, Number of poles: 23,
GTIN (EAN)	4032248628186	90°, Clamping yoke connection, Clamping range, max. : 4 mm ² , Box
Qty.	12 ST	
Type	BLZP 5.08HC/23/90F SN O...	Version
Order No.	1950020000	PCB plug-in connector, female plug, 5.08 mm, Number of poles: 23,
GTIN (EAN)	4032248627950	90°, Clamping yoke connection, Clamping range, max. : 4 mm ² , Box
Qty.	12 ST	
Type	BLZP 5.08HC/24/90F SN B...	Version
Order No.	1950260000	PCB plug-in connector, female plug, 5.08 mm, Number of poles: 24,
GTIN (EAN)	4032248628193	90°, Clamping yoke connection, Clamping range, max. : 4 mm ² , Box
Qty.	12 ST	
Type	BLZP 5.08HC/24/90F SN O...	Version
Order No.	1950030000	PCB plug-in connector, female plug, 5.08 mm, Number of poles: 24,
GTIN (EAN)	4032248627967	90°, Clamping yoke connection, Clamping range, max. : 4 mm ² , Box
Qty.	12 ST	

WMF 2.5 BLZ

Weidmüller Interface GmbH & Co. KG
 Klingenbergstraße 26
 D-32758 Detmold
 Germany

www.weidmueller.com

Accessories

Accessories



The comprehensive accessories of the Klippon® Connect portfolio are perfectly matched down to the last detail. This facilitates mounting while adhering to required norms

General ordering data

Type	WAD WMF2.5	Version	
Order No.	1142970000	Terminal cover, dark beige, Wemid, Height: 11 mm, Width: 9.96 mm,	
GTIN (EAN)	4032248926039	Depth: 9.68 mm, V-0	
Qty.	50 ST		

Blank



The Dekafix (DEK) marker is the universal marker for all conductor and plug-in connectors as well as for electronic sub-assemblies. The system is ideal for short number sequences and covers a wide range of ready-printed markers.

Strips for fast installation in only one work step. The printing is easy to read, rich in contrast and available in various widths.

- Large range of ready-to-use markers
 - Strips for fast installation
 - Terminal markers, suitable for all Weidmüller cable connectors
 - Available as blank MultiCard or with standard printing
- For custom printing: Please send us a file of our labeling software M-Print PRO or M-Print PRO Online (without installation) for your labeling specifications.

General ordering data

Type	DEK 5/5 MC NE WS	Version	
Order No.	1609801044	Dekafix, Terminal marker, 5 x 5 mm, Pitch in mm (P): 5.00	
GTIN (EAN)	4008190397111	Weidmueller, white	
Qty.	1000 ST		
Type	WS 10/5 M MC NE WS	Version	
Order No.	1792000000	WS, Terminal marker, 10 x 5 mm, Pitch in mm (P): 5.00 Weidmueller,	
GTIN (EAN)	4032248223862	Allen-Bradley, white	
Qty.	720 ST		

Accessories

Marker holder



The marker holder offer the possibility of additional mounting of standard markers with a pitch of 5 or 5.1 mm. The angled holders can be optionally snapped together and could be mounted in all standard marking channels of the Klippon® Connect modular terminal blocks. Fitting marker types could be found under the respective accessories of the designation marking holder.

General ordering data

Type	BZT 1 WS 10/5	Version
Order No.	1805490000	Accessories, Marker holder
GTIN (EAN)	4032248270231	
Qty.	100 ST	
Type	BZT 1 ZA WS 10/5	Version
Order No.	1805520000	Accessories, Marker holder
GTIN (EAN)	4032248270248	
Qty.	100 ST	

Cross-connections



The distribution or multiplication of a potential to adjoining terminal blocks is realized via a cross-connection. Additional wiring effort can be easily avoided. Even if the poles are broken out, contact reliability in the terminal blocks is still ensured. Our portfolio offers pluggable and screwable cross-connection systems for modular terminal blocks.

General ordering data

Type	ZQV 2.5N/10	Version
Order No.	1527690000	Cross-connector (terminal), Plugged, orange, 24 A, Number of poles: 10, Pitch in mm (P): 5.10, Insulated: Yes, Width: 48.7 mm
GTIN (EAN)	4050118447989	
Qty.	20 ST	
Type	ZQV 2.5N/10 BL	Version
Order No.	1527880000	Cross-connector (terminal), Plugged, blue, 24 A, Number of poles: 10, Pitch in mm (P): 5.10, Insulated: Yes, Width: 48.7 mm
GTIN (EAN)	4050118448573	
Qty.	20 ST	
Type	ZQV 2.5N/10 RD	Version
Order No.	2108910000	Cross-connector (terminal), Plugged, red, 24 A, Number of poles: 10, Pitch in mm (P): 5.10, Insulated: Yes, Width: 48.7 mm
GTIN (EAN)	4050118486018	
Qty.	20 ST	
Type	ZQV 2.5N/2	Version
Order No.	1527540000	Cross-connector (terminal), Plugged, orange, 24 A, Number of poles: 2, Pitch in mm (P): 5.10, Insulated: Yes, Width: 7.9 mm
GTIN (EAN)	4050118448467	
Qty.	60 ST	

WMF 2.5 BLZ

Weidmüller Interface GmbH & Co. KG
 Klingenbergstraße 26
 D-32758 Detmold
 Germany

www.weidmueller.com

Accessories

Type	ZQV 2.5N/2 BL	Version
Order No.	1527740000	Cross-connector (terminal), Plugged, blue, 24 A, Number of poles: 2,
GTIN (EAN)	4050118448658	Pitch in mm (P): 5.10, Insulated: Yes, Width: 7.9 mm
Qty.	60 ST	
Type	ZQV 2.5N/2 RD	Version
Order No.	2108470000	Cross-connector (terminal), Plugged, red, 24 A, Number of poles: 2,
GTIN (EAN)	4050118448542	Pitch in mm (P): 5.10, Insulated: Yes, Width: 7.9 mm
Qty.	60 ST	
Type	ZQV 2.5N/20	Version
Order No.	1527720000	Cross-connector (terminal), Plugged, orange, 24 A, Number of poles:
GTIN (EAN)	4050118447972	20, Pitch in mm (P): 5.10, Insulated: Yes, Width: 102 mm
Qty.	20 ST	
Type	ZQV 2.5N/20 BL	Version
Order No.	1527890000	Cross-connector (terminal), Plugged, blue, 24 A, Number of poles: 20,
GTIN (EAN)	4050118448566	Pitch in mm (P): 5.10, Insulated: Yes, Width: 102 mm
Qty.	20 ST	
Type	ZQV 2.5N/20 RD	Version
Order No.	2108920000	Cross-connector (terminal), Plugged, red, 24 A, Number of poles: 20,
GTIN (EAN)	4050118485899	Pitch in mm (P): 5.10, Insulated: Yes, Width: 102 mm
Qty.	20 ST	
Type	ZQV 2.5N/3	Version
Order No.	1527570000	Cross-connector (terminal), Plugged, orange, 24 A, Number of poles:
GTIN (EAN)	4050118448450	3, Pitch in mm (P): 5.10, Insulated: Yes, Width: 13 mm
Qty.	60 ST	
Type	ZQV 2.5N/3 BL	Version
Order No.	1527770000	Cross-connector (terminal), Plugged, blue, 24 A, Number of poles: 3,
GTIN (EAN)	4050118448641	Pitch in mm (P): 5.10, Insulated: Yes, Width: 13 mm
Qty.	60 ST	
Type	ZQV 2.5N/3 RD	Version
Order No.	2108690000	Cross-connector (terminal), Plugged, red, 24 A, Number of poles: 3,
GTIN (EAN)	4050118448535	Pitch in mm (P): 5.10, Insulated: Yes, Width: 13 mm
Qty.	60 ST	
Type	ZQV 2.5N/4	Version
Order No.	1527590000	Cross-connector (terminal), Plugged, orange, 24 A, Number of poles:
GTIN (EAN)	4050118448443	4, Pitch in mm (P): 5.10, Insulated: Yes, Width: 18.1 mm
Qty.	60 ST	
Type	ZQV 2.5N/4 BL	Version
Order No.	1527780000	Cross-connector (terminal), Plugged, blue, 24 A, Number of poles: 4,
GTIN (EAN)	4050118448634	Pitch in mm (P): 5.10, Insulated: Yes, Width: 18.1 mm
Qty.	60 ST	
Type	ZQV 2.5N/4 RD	Version
Order No.	2108700000	Cross-connector (terminal), Plugged, red, 24 A, Number of poles: 4,
GTIN (EAN)	4050118448528	Pitch in mm (P): 5.10, Insulated: Yes, Width: 18.1 mm
Qty.	60 ST	
Type	ZQV 2.5N/5	Version
Order No.	1527620000	Cross-connector (terminal), Plugged, orange, 24 A, Number of poles:
GTIN (EAN)	4050118448436	5, Pitch in mm (P): 5.10, Insulated: Yes, Width: 23.2 mm
Qty.	20 ST	
Type	ZQV 2.5N/5 BL	Version
Order No.	1527790000	Cross-connector (terminal), Plugged, blue, 24 A, Number of poles: 5,
GTIN (EAN)	4050118448627	Pitch in mm (P): 5.10, Insulated: Yes, Width: 23.2 mm
Qty.	20 ST	

WMF 2.5 BLZ

Weidmüller Interface GmbH & Co. KG
 Klingenbergstraße 26
 D-32758 Detmold
 Germany

www.weidmueller.com

Accessories

Type	ZQV 2.5N/5 RD	Version
Order No.	2108710000	Cross-connector (terminal), Plugged, red, 24 A, Number of poles: 5,
GTIN (EAN)	4050118448511	Pitch in mm (P): 5.10, Insulated: Yes, Width: 23.2 mm
Qty.	20 ST	
Type	ZQV 2.5N/50	Version
Order No.	1527730000	Cross-connector (terminal), Plugged, orange, 24 A, Number of poles:
GTIN (EAN)	4050118411362	50, Pitch in mm (P): 5.10, Insulated: Yes, Width: 255 mm
Qty.	5 ST	
Type	ZQV 2.5N/50 BL	Version
Order No.	1527920000	Cross-connector (terminal), Plugged, blue, 24 A, Number of poles: 50,
GTIN (EAN)	4050118448559	Pitch in mm (P): 5.10, Insulated: Yes, Width: 255 mm
Qty.	5 ST	
Type	ZQV 2.5N/50 RD	Version
Order No.	2109000000	Cross-connector (terminal), Plugged, red, 24 A, Number of poles: 50,
GTIN (EAN)	4050118486001	Pitch in mm (P): 5.10, Insulated: Yes, Width: 255 mm
Qty.	5 ST	
Type	ZQV 2.5N/6	Version
Order No.	1527630000	Cross-connector (terminal), Plugged, orange, 24 A, Number of poles:
GTIN (EAN)	4050118448429	6, Pitch in mm (P): 5.10, Insulated: Yes, Width: 28.3 mm
Qty.	20 ST	
Type	ZQV 2.5N/6 BL	Version
Order No.	1527820000	Cross-connector (terminal), Plugged, blue, 24 A, Number of poles: 6,
GTIN (EAN)	4050118448610	Pitch in mm (P): 5.10, Insulated: Yes, Width: 28.3 mm
Qty.	20 ST	
Type	ZQV 2.5N/6 RD	Version
Order No.	2108720000	Cross-connector (terminal), Plugged, red, 24 A, Number of poles: 6,
GTIN (EAN)	4050118448504	Pitch in mm (P): 5.10, Insulated: Yes, Width: 28.3 mm
Qty.	20 ST	
Type	ZQV 2.5N/7	Version
Order No.	1527640000	Cross-connector (terminal), Plugged, orange, 24 A, Number of poles:
GTIN (EAN)	4050118448412	7, Pitch in mm (P): 5.10, Insulated: Yes, Width: 33.4 mm
Qty.	20 ST	
Type	ZQV 2.5N/7 BL	Version
Order No.	1527830000	Cross-connector (terminal), Plugged, blue, 24 A, Number of poles: 7,
GTIN (EAN)	4050118448603	Pitch in mm (P): 5.10, Insulated: Yes, Width: 33.4 mm
Qty.	20 ST	
Type	ZQV 2.5N/7 RD	Version
Order No.	2108810000	Cross-connector (terminal), Plugged, red, 24 A, Number of poles: 7,
GTIN (EAN)	4050118448498	Pitch in mm (P): 5.10, Insulated: Yes, Width: 33.4 mm
Qty.	20 ST	
Type	ZQV 2.5N/8	Version
Order No.	1527670000	Cross-connector (terminal), Plugged, orange, 24 A, Number of poles:
GTIN (EAN)	4050118448405	8, Pitch in mm (P): 5.10, Insulated: Yes, Width: 38.5 mm
Qty.	20 ST	
Type	ZQV 2.5N/8 BL	Version
Order No.	1527840000	Cross-connector (terminal), Plugged, blue, 24 A, Number of poles: 6,
GTIN (EAN)	4050118448597	Pitch in mm (P): 5.10, Insulated: Yes, Width: 38.5 mm
Qty.	20 ST	
Type	ZQV 2.5N/8 RD	Version
Order No.	2108870000	Cross-connector (terminal), Plugged, red, 24 A, Number of poles: 8,
GTIN (EAN)	4050118448481	Pitch in mm (P): 5.10, Insulated: Yes, Width: 38.5 mm
Qty.	20 ST	

WMF 2.5 BLZ

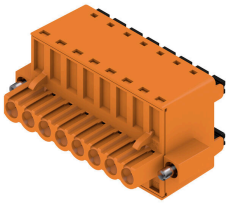
Weidmüller Interface GmbH & Co. KG
 Klingenbergstraße 26
 D-32758 Detmold
 Germany

www.weidmueller.com

Accessories

Type	ZQV 2.5N/9	Version
Order No.	1527680000	Cross-connector (terminal), Plugged, orange, 24 A, Number of poles:
GTIN (EAN)	4050118447996	9, Pitch in mm (P): 5.10, Insulated: Yes, Width: 43.6 mm
Qty.	20 ST	
Type	ZQV 2.5N/9 BL	Version
Order No.	1527870000	Cross-connector (terminal), Plugged, blue, 24 A, Number of poles: 9,
GTIN (EAN)	4050118448580	Pitch in mm (P): 5.10, Insulated: Yes, Width: 43.6 mm
Qty.	20 ST	
Type	ZQV 2.5N/9 RD	Version
Order No.	2108900000	Cross-connector (terminal), Plugged, red, 24 A, Number of poles: 9,
GTIN (EAN)	4050118448474	Pitch in mm (P): 5.10, Insulated: Yes, Width: 43.6 mm
Qty.	20 ST	

BLDF 5.08/180F SN



The powerful daisy-chain solution for high-performance signal bus applications is also suitable for 400V auxiliary power chains with 18.5A current-carrying capacity. The large clamping capacity (up to 2.5mm² wire cross-sections) is particularly beneficial for long bus cables or high currents because of the low voltage drop. Four flange variations, including the patented release latch, allow for user-friendly unplugging designs.

General ordering data

Type	BLDF 5.08/08/180F SN OR...	Version
Order No.	1065120000	PCB plug-in connector, female plug, 5.08 mm, Number of poles: 8,
GTIN (EAN)	4032248817658	180°, PUSH IN with actuator, Clamping range, max. : 3.31 mm ² , Box
Qty.	24 ST	
Type	BLDF 5.08/08/180F SN BK...	Version
Order No.	1001000000	PCB plug-in connector, female plug, 5.08 mm, Number of poles: 8,
GTIN (EAN)	4032248817559	180°, PUSH IN with actuator, Clamping range, max. : 3.31 mm ² , Box
Qty.	24 ST	
Type	BLDF 5.08/07/180F SN OR...	Version
Order No.	1065110000	PCB plug-in connector, female plug, 5.08 mm, Number of poles: 7,
GTIN (EAN)	4032248817832	180°, PUSH IN with actuator, Clamping range, max. : 3.31 mm ² , Box
Qty.	24 ST	
Type	BLDF 5.08/06/180F SN OR...	Version
Order No.	1065090000	PCB plug-in connector, female plug, 5.08 mm, Number of poles: 6,
GTIN (EAN)	4032248817801	180°, PUSH IN with actuator, Clamping range, max. : 3.31 mm ² , Box
Qty.	28 ST	
Type	BLDF 5.08/07/180F SN BK...	Version
Order No.	1000990000	PCB plug-in connector, female plug, 5.08 mm, Number of poles: 7,
GTIN (EAN)	4032248817474	180°, PUSH IN with actuator, Clamping range, max. : 3.31 mm ² , Box
Qty.	24 ST	
Type	BLDF 5.08/06/180F SN BK...	Version
Order No.	1000980000	PCB plug-in connector, female plug, 5.08 mm, Number of poles: 6,
GTIN (EAN)	4032248817375	180°, PUSH IN with actuator, Clamping range, max. : 3.31 mm ² , Box
Qty.	28 ST	

WMF 2.5 BLZ

Weidmüller Interface GmbH & Co. KG

Klingenbergstraße 26

D-32758 Detmold

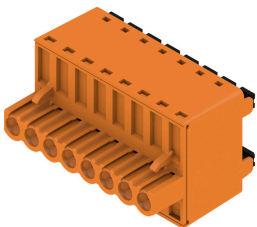
Germany

www.weidmueller.com

Accessories

Type	BLDF 5.08/05/180F SN OR...	Version
Order No.	1065080000	PCB plug-in connector, female plug, 5.08 mm, Number of poles: 5,
GTIN (EAN)	4032248817856	180°, PUSH IN with actuator, Clamping range, max. : 3.31 mm², Box
Qty.	32 ST	
Type	BLDF 5.08/05/180F SN BK...	Version
Order No.	1000970000	PCB plug-in connector, female plug, 5.08 mm, Number of poles: 5,
GTIN (EAN)	4032248817337	180°, PUSH IN with actuator, Clamping range, max. : 3.31 mm², Box
Qty.	32 ST	
Type	BLDF 5.08/04/180F SN OR...	Version
Order No.	1059420000	PCB plug-in connector, female plug, 5.08 mm, Number of poles: 4,
GTIN (EAN)	4032248817894	180°, PUSH IN with actuator, Clamping range, max. : 3.31 mm², Box
Qty.	40 ST	
Type	BLDF 5.08/04/180F SN BK...	Version
Order No.	1000960000	PCB plug-in connector, female plug, 5.08 mm, Number of poles: 4,
GTIN (EAN)	4032248817344	180°, PUSH IN with actuator, Clamping range, max. : 3.31 mm², Box
Qty.	40 ST	
Type	BLDF 5.08/03/180F SN OR...	Version
Order No.	1012060000	PCB plug-in connector, female plug, 5.08 mm, Number of poles: 3,
GTIN (EAN)	4032248818037	180°, PUSH IN with actuator, Clamping range, max. : 3.31 mm², Box
Qty.	48 ST	
Type	BLDF 5.08/03/180F SN BK...	Version
Order No.	1000950000	PCB plug-in connector, female plug, 5.08 mm, Number of poles: 3,
GTIN (EAN)	4032248817085	180°, PUSH IN with actuator, Clamping range, max. : 3.31 mm², Box
Qty.	48 ST	
Type	BLDF 5.08/02/180F SN OR...	Version
Order No.	1001220000	PCB plug-in connector, female plug, 5.08 mm, Number of poles: 2,
GTIN (EAN)	4032248817955	180°, PUSH IN with actuator, Clamping range, max. : 3.31 mm², Box
Qty.	60 ST	
Type	BLDF 5.08/02/180F SN BK...	Version
Order No.	1000930000	PCB plug-in connector, female plug, 5.08 mm, Number of poles: 2,
GTIN (EAN)	4032248817252	180°, PUSH IN with actuator, Clamping range, max. : 3.31 mm², Box
Qty.	60 ST	

BLDF 5.08/180 SN



The powerful daisy-chain solution for high-performance signal bus applications is also suitable for 400V auxiliary power chains with 18.5A current-carrying capacity. The large clamping capacity (up to 2.5mm² wire cross-sections) is particularly beneficial for long bus cables or high currents because of the low voltage drop. Four flange variations, including the patented release latch, allow for user-friendly unplugging designs.

General ordering data

Type	BLDF 5.08/02/180 SN BK ...	Version
Order No.	1000860000	PCB plug-in connector, female plug, 5.08 mm, Number of poles: 2,
GTIN (EAN)	4032248817030	180°, PUSH IN with actuator, Clamping range, max. : 3.31 mm², Box
Qty.	120 ST	

WMF 2.5 BLZ

Weidmüller Interface GmbH & Co. KG
 Klingenbergstraße 26
 D-32758 Detmold
 Germany

www.weidmueller.com

Accessories

Type	BLDF 5.08/02/180 SN OR ...	Version
Order No.	1001150000	PCB plug-in connector, female plug, 5.08 mm, Number of poles: 2,
GTIN (EAN)	4032248818020	180°, PUSH IN with actuator, Clamping range, max. : 3.31 mm², Box
Qty.	120 ST	
Type	BLDF 5.08/03/180 SN BK ...	Version
Order No.	1000870000	PCB plug-in connector, female plug, 5.08 mm, Number of poles: 3,
GTIN (EAN)	4032248817276	180°, PUSH IN with actuator, Clamping range, max. : 3.31 mm², Box
Qty.	80 ST	
Type	BLDF 5.08/03/180 SN OR ...	Version
Order No.	1001160000	PCB plug-in connector, female plug, 5.08 mm, Number of poles: 3,
GTIN (EAN)	4032248817726	180°, PUSH IN with actuator, Clamping range, max. : 3.31 mm², Box
Qty.	80 ST	
Type	BLDF 5.08/03/180 SN OR ...	Version
Order No.	2759190000	PCB plug-in connector, female plug, 5.08 mm, Number of poles: 3,
GTIN (EAN)	4064675007289	180°, PUSH IN with actuator, Tension-clamp connection, Clamping
Qty.	80 ST	range, max. : 3.31 mm², Box
Type	BLDF 5.08/04/180 SN BK ...	Version
Order No.	1000880000	PCB plug-in connector, female plug, 5.08 mm, Number of poles: 4,
GTIN (EAN)	4032248817269	180°, PUSH IN with actuator, Clamping range, max. : 3.31 mm², Box
Qty.	60 ST	
Type	BLDF 5.08/04/180 SN OR ...	Version
Order No.	1001170000	PCB plug-in connector, female plug, 5.08 mm, Number of poles: 4,
GTIN (EAN)	4032248818075	180°, PUSH IN with actuator, Clamping range, max. : 3.31 mm², Box
Qty.	60 ST	
Type	BLDF 5.08/05/180 SN BK ...	Version
Order No.	1000890000	PCB plug-in connector, female plug, 5.08 mm, Number of poles: 5,
GTIN (EAN)	4032248817078	180°, PUSH IN with actuator, Clamping range, max. : 3.31 mm², Box
Qty.	48 ST	
Type	BLDF 5.08/05/180 SN OR ...	Version
Order No.	1001180000	PCB plug-in connector, female plug, 5.08 mm, Number of poles: 5,
GTIN (EAN)	4032248818228	180°, PUSH IN with actuator, Clamping range, max. : 3.31 mm², Box
Qty.	48 ST	
Type	BLDF 5.08/06/180 SN BK ...	Version
Order No.	1000900000	PCB plug-in connector, female plug, 5.08 mm, Number of poles: 6,
GTIN (EAN)	4032248817412	180°, PUSH IN with actuator, Clamping range, max. : 3.31 mm², Box
Qty.	40 ST	
Type	BLDF 5.08/06/180 SN OR ...	Version
Order No.	1001190000	PCB plug-in connector, female plug, 5.08 mm, Number of poles: 6,
GTIN (EAN)	4032248818174	180°, PUSH IN with actuator, Clamping range, max. : 3.31 mm², Box
Qty.	40 ST	
Type	BLDF 5.08/07/180 SN BK ...	Version
Order No.	1000910000	PCB plug-in connector, female plug, 5.08 mm, Number of poles: 7,
GTIN (EAN)	4032248817450	180°, PUSH IN with actuator, Clamping range, max. : 3.31 mm², Box
Qty.	32 ST	
Type	BLDF 5.08/07/180 SN OR ...	Version
Order No.	1001200000	PCB plug-in connector, female plug, 5.08 mm, Number of poles: 7,
GTIN (EAN)	4032248817535	180°, PUSH IN with actuator, Clamping range, max. : 3.31 mm², Box
Qty.	32 ST	
Type	BLDF 5.08/08/180 SN BK ...	Version
Order No.	1000920000	PCB plug-in connector, female plug, 5.08 mm, Number of poles: 8,
GTIN (EAN)	4032248817092	180°, PUSH IN with actuator, Clamping range, max. : 3.31 mm², Box
Qty.	28 ST	

WMF 2.5 BLZ

Weidmüller Interface GmbH & Co. KG

Klingenbergstraße 26

D-32758 Detmold

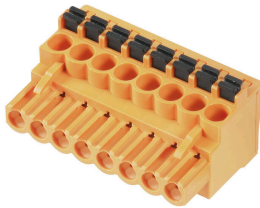
Germany

www.weidmueller.com

Accessories

Type	BLDF 5.08/08/180 SN OR ...	Version
Order No.	1001210000	PCB plug-in connector, female plug, 5.08 mm, Number of poles: 8,
GTIN (EAN)	4032248817573	180°, PUSH IN with actuator, Clamping range, max. : 3.31 mm², Box
Qty.	28 ST	

BLF 5.08HC/90 SN



Just as reliable as the millionfold proven original and featuring innovative details:

The BLF 5.08HC PUSH IN version of the BLZP 5.08HC female connector is not only different in terms of connection system; it also has a more compact design. Weidmüller's innovative PUSH IN spring connection system stands for the future of easy and tool-free wire connection. HC = High Current.

In terms of versatility, the BLF 5.08HC offers just as much as the version which served as a model:

- 3 tested-and-proven wire outlet directions provide the usual flexibility for application-specific design
- 4 flange variations and the patented release latch allow the locking concept to be based on the requirements of the user
- Use the BLF 5.08HC and SL 5.08HC plug combination to reach the max. rated specifications

General ordering data

Type	BLF 5.08HC/02/90 SN BK ...	Version
Order No.	1000030001	PCB plug-in connector, female plug, 5.08 mm, Number of poles: 2,
GTIN (EAN)	4032248689965	90°, PUSH IN with actuator, Clamping range, max. : 3.31 mm², Box
Qty.	180 ST	
Type	BLF 5.08HC/02/90 SN OR ...	Version
Order No.	1001530000	PCB plug-in connector, female plug, 5.08 mm, Number of poles: 2,
GTIN (EAN)	4032248693337	90°, PUSH IN with actuator, Clamping range, max. : 3.31 mm², Box
Qty.	180 ST	
Type	BLF 5.08HC/03/90 SN BK ...	Version
Order No.	1000040001	PCB plug-in connector, female plug, 5.08 mm, Number of poles: 3,
GTIN (EAN)	4032248689972	90°, PUSH IN with actuator, Clamping range, max. : 3.31 mm², Box
Qty.	120 ST	
Type	BLF 5.08HC/03/90 SN OR ...	Version
Order No.	1001540000	PCB plug-in connector, female plug, 5.08 mm, Number of poles: 3,
GTIN (EAN)	4032248693344	90°, PUSH IN with actuator, Clamping range, max. : 3.31 mm², Box
Qty.	120 ST	
Type	BLF 5.08HC/03/90 SN OR ...	Version
Order No.	2766910000	PCB plug-in connector, female plug, 5.08 mm, Number of poles: 3,
GTIN (EAN)	4064675022527	90°, PUSH IN with actuator, Clamping range, max. : 3.31 mm², Box
Qty.	120 ST	
Type	BLF 5.08HC/03/90 SN OR ...	Version
Order No.	2764380000	PCB plug-in connector, female plug, 5.08 mm, Number of poles: 3,
GTIN (EAN)	4064675017332	90°, PUSH IN with actuator, Tension-clamp connection, Clamping range, max. : 3.31 mm², Box
Qty.	120 ST	
Type	BLF 5.08HC/04/90 SN BK ...	Version
Order No.	1000050001	PCB plug-in connector, female plug, 5.08 mm, Number of poles: 4,
GTIN (EAN)	4032248689989	90°, PUSH IN with actuator, Clamping range, max. : 3.31 mm², Box
Qty.	90 ST	

WMF 2.5 BLZ

Weidmüller Interface GmbH & Co. KG
 Klingenbergstraße 26
 D-32758 Detmold
 Germany

www.weidmueller.com

Accessories

Type	BLF 5.08HC/04/90 SN OR ...	Version
Order No.	1001550000	PCB plug-in connector, female plug, 5.08 mm, Number of poles: 4,
GTIN (EAN)	4032248693351	90°, PUSH IN with actuator, Clamping range, max. : 3.31 mm², Box
Qty.	90 ST	
Type	BLF 5.08HC/05/90 SN BK ...	Version
Order No.	1000060001	PCB plug-in connector, female plug, 5.08 mm, Number of poles: 5,
GTIN (EAN)	4032248689996	90°, PUSH IN with actuator, Clamping range, max. : 3.31 mm², Box
Qty.	72 ST	
Type	BLF 5.08HC/05/90 SN OR ...	Version
Order No.	1001560000	PCB plug-in connector, female plug, 5.08 mm, Number of poles: 5,
GTIN (EAN)	4032248693368	90°, PUSH IN with actuator, Clamping range, max. : 3.31 mm², Box
Qty.	72 ST	
Type	BLF 5.08HC/06/90 SN BK ...	Version
Order No.	1000070001	PCB plug-in connector, female plug, 5.08 mm, Number of poles: 6,
GTIN (EAN)	4032248690008	90°, PUSH IN with actuator, Clamping range, max. : 3.31 mm², Box
Qty.	60 ST	
Type	BLF 5.08HC/06/90 SN OR ...	Version
Order No.	1001570000	PCB plug-in connector, female plug, 5.08 mm, Number of poles: 6,
GTIN (EAN)	4032248693375	90°, PUSH IN with actuator, Clamping range, max. : 3.31 mm², Box
Qty.	60 ST	
Type	BLF 5.08HC/07/90 SN OR ...	Version
Order No.	1001580000	PCB plug-in connector, female plug, 5.08 mm, Number of poles: 7,
GTIN (EAN)	4032248693382	90°, PUSH IN with actuator, Clamping range, max. : 3.31 mm², Box
Qty.	48 ST	
Type	BLF 5.08HC/08/90 SN BK ...	Version
Order No.	1000090001	PCB plug-in connector, female plug, 5.08 mm, Number of poles: 8,
GTIN (EAN)	4032248690022	90°, PUSH IN with actuator, Clamping range, max. : 3.31 mm², Box
Qty.	42 ST	
Type	BLF 5.08HC/08/90 SN OR ...	Version
Order No.	1001590000	PCB plug-in connector, female plug, 5.08 mm, Number of poles: 8,
GTIN (EAN)	4032248693399	90°, PUSH IN with actuator, Clamping range, max. : 3.31 mm², Box
Qty.	42 ST	
Type	BLF 5.08HC/09/90 SN OR ...	Version
Order No.	1001600000	PCB plug-in connector, female plug, 5.08 mm, Number of poles: 9,
GTIN (EAN)	4032248693405	90°, PUSH IN with actuator, Clamping range, max. : 3.31 mm², Box
Qty.	36 ST	
Type	BLF 5.08HC/10/90 SN BK ...	Version
Order No.	1000110001	PCB plug-in connector, female plug, 5.08 mm, Number of poles: 10,
GTIN (EAN)	4032248690046	90°, PUSH IN with actuator, Clamping range, max. : 3.31 mm², Box
Qty.	36 ST	
Type	BLF 5.08HC/10/90 SN OR ...	Version
Order No.	1001610000	PCB plug-in connector, female plug, 5.08 mm, Number of poles: 10,
GTIN (EAN)	4032248693412	90°, PUSH IN with actuator, Clamping range, max. : 3.31 mm², Box
Qty.	36 ST	
Type	BLF 5.08HC/11/90 SN BK ...	Version
Order No.	1000120001	PCB plug-in connector, female plug, 5.08 mm, Number of poles: 11,
GTIN (EAN)	4032248690060	90°, PUSH IN with actuator, Clamping range, max. : 3.31 mm², Box
Qty.	30 ST	
Type	BLF 5.08HC/11/90 SN OR ...	Version
Order No.	1001620000	PCB plug-in connector, female plug, 5.08 mm, Number of poles: 11,
GTIN (EAN)	4032248693429	90°, PUSH IN with actuator, Clamping range, max. : 3.31 mm², Box
Qty.	30 ST	

WMF 2.5 BLZ

Weidmüller Interface GmbH & Co. KG
 Klingenbergstraße 26
 D-32758 Detmold
 Germany

www.weidmueller.com

Accessories

Type	BLF 5.08HC/12/90 SN BK ...	Version
Order No.	1000130001	PCB plug-in connector, female plug, 5.08 mm, Number of poles: 12,
GTIN (EAN)	4032248690084	90°, PUSH IN with actuator, Clamping range, max. : 3.31 mm², Box
Qty.	30 ST	
Type	BLF 5.08HC/12/90 SN OR ...	Version
Order No.	1001630000	PCB plug-in connector, female plug, 5.08 mm, Number of poles: 12,
GTIN (EAN)	4032248693436	90°, PUSH IN with actuator, Clamping range, max. : 3.31 mm², Box
Qty.	30 ST	
Type	BLF 5.08HC/13/90 SN BK ...	Version
Order No.	1000140001	PCB plug-in connector, female plug, 5.08 mm, Number of poles: 13,
GTIN (EAN)	4032248690091	90°, PUSH IN with actuator, Clamping range, max. : 3.31 mm², Box
Qty.	24 ST	
Type	BLF 5.08HC/13/90 SN OR ...	Version
Order No.	1001640000	PCB plug-in connector, female plug, 5.08 mm, Number of poles: 13,
GTIN (EAN)	4032248693443	90°, PUSH IN with actuator, Clamping range, max. : 3.31 mm², Box
Qty.	24 ST	
Type	BLF 5.08HC/14/90 SN BK ...	Version
Order No.	1000150001	PCB plug-in connector, female plug, 5.08 mm, Number of poles: 14,
GTIN (EAN)	4032248690107	90°, PUSH IN with actuator, Clamping range, max. : 3.31 mm², Box
Qty.	24 ST	
Type	BLF 5.08HC/14/90 SN OR ...	Version
Order No.	1001650000	PCB plug-in connector, female plug, 5.08 mm, Number of poles: 14,
GTIN (EAN)	4032248693450	90°, PUSH IN with actuator, Clamping range, max. : 3.31 mm², Box
Qty.	24 ST	
Type	BLF 5.08HC/15/90 SN OR ...	Version
Order No.	1001660000	PCB plug-in connector, female plug, 5.08 mm, Number of poles: 15,
GTIN (EAN)	4032248693467	90°, PUSH IN with actuator, Clamping range, max. : 3.31 mm², Box
Qty.	24 ST	
Type	BLF 5.08HC/16/90 SN BK ...	Version
Order No.	1000170001	PCB plug-in connector, female plug, 5.08 mm, Number of poles: 16,
GTIN (EAN)	4032248690121	90°, PUSH IN with actuator, Clamping range, max. : 3.31 mm², Box
Qty.	18 ST	
Type	BLF 5.08HC/16/90 SN OR ...	Version
Order No.	1001670000	PCB plug-in connector, female plug, 5.08 mm, Number of poles: 16,
GTIN (EAN)	4032248693474	90°, PUSH IN with actuator, Clamping range, max. : 3.31 mm², Box
Qty.	18 ST	
Type	BLF 5.08HC/17/90 SN BK ...	Version
Order No.	1000180001	PCB plug-in connector, female plug, 5.08 mm, Number of poles: 17,
GTIN (EAN)	4032248690138	90°, PUSH IN with actuator, Clamping range, max. : 3.31 mm², Box
Qty.	18 ST	
Type	BLF 5.08HC/17/90 SN OR ...	Version
Order No.	1001680000	PCB plug-in connector, female plug, 5.08 mm, Number of poles: 17,
GTIN (EAN)	4032248693481	90°, PUSH IN with actuator, Clamping range, max. : 3.31 mm², Box
Qty.	18 ST	
Type	BLF 5.08HC/18/90 SN BK ...	Version
Order No.	1000190001	PCB plug-in connector, female plug, 5.08 mm, Number of poles: 18,
GTIN (EAN)	4032248690145	90°, PUSH IN with actuator, Clamping range, max. : 3.31 mm², Box
Qty.	18 ST	
Type	BLF 5.08HC/18/90 SN OR ...	Version
Order No.	1001690000	PCB plug-in connector, female plug, 5.08 mm, Number of poles: 18,
GTIN (EAN)	4032248693498	90°, PUSH IN with actuator, Clamping range, max. : 3.31 mm², Box
Qty.	18 ST	

WMF 2.5 BLZ

Weidmüller Interface GmbH & Co. KG

Klingenbergstraße 26
D-32758 Detmold
Germany

www.weidmueller.com

Accessories

Type	BLF 5.08HC/19/90 SN BK ...	Version
Order No.	1000200001	PCB plug-in connector, female plug, 5.08 mm, Number of poles: 19,
GTIN (EAN)	4032248690152	90°, PUSH IN with actuator, Clamping range, max. : 3.31 mm², Box
Qty.	18 ST	
Type	BLF 5.08HC/19/90 SN OR ...	Version
Order No.	1001700000	PCB plug-in connector, female plug, 5.08 mm, Number of poles: 19,
GTIN (EAN)	4032248693504	90°, PUSH IN with actuator, Clamping range, max. : 3.31 mm², Box
Qty.	18 ST	
Type	BLF 5.08HC/20/90 SN OR ...	Version
Order No.	1001710000	PCB plug-in connector, female plug, 5.08 mm, Number of poles: 20,
GTIN (EAN)	4032248693511	90°, PUSH IN with actuator, Clamping range, max. : 3.31 mm², Box
Qty.	18 ST	

BLF 5.08HC/90F SN



Just as reliable as the millionfold proven original and featuring innovative details:

The BLF 5.08HC PUSH IN version of the BLZP 5.08HC female connector is not only different in terms of connection system; it also has a more compact design. Weidmüller's innovative PUSH IN spring connection system stands for the future of easy and tool-free wire connection. HC = High Current.

In terms of versatility, the BLF 5.08HC offers just as much as the version which served as a model:

- 3 tested-and-proven wire outlet directions provide the usual flexibility for application-specific design
- 4 flange variations and the patented release latch allow the locking concept to be based on the requirements of the user
- Use the BLF 5.08HC and SL 5.08HC plug combination to reach the max. rated specifications

General ordering data

Type	BLF 5.08HC/02/90F SN BK...	Version
Order No.	1000220001	PCB plug-in connector, female plug, 5.08 mm, Number of poles: 2,
GTIN (EAN)	4032248690183	90°, PUSH IN with actuator, Clamping range, max. : 3.31 mm², Box
Qty.	90 ST	
Type	BLF 5.08HC/02/90F SN OR...	Version
Order No.	1002090000	PCB plug-in connector, female plug, 5.08 mm, Number of poles: 2,
GTIN (EAN)	4032248694044	90°, PUSH IN with actuator, Clamping range, max. : 3.31 mm², Box
Qty.	90 ST	
Type	BLF 5.08HC/03/90F SN BK...	Version
Order No.	1000230001	PCB plug-in connector, female plug, 5.08 mm, Number of poles: 3,
GTIN (EAN)	4032248690190	90°, PUSH IN with actuator, Clamping range, max. : 3.31 mm², Box
Qty.	72 ST	
Type	BLF 5.08HC/03/90F SN OR...	Version
Order No.	1002100000	PCB plug-in connector, female plug, 5.08 mm, Number of poles: 3,
GTIN (EAN)	4032248694051	90°, PUSH IN with actuator, Clamping range, max. : 3.31 mm², Box
Qty.	72 ST	
Type	BLF 5.08HC/04/90F SN BK...	Version
Order No.	1000240001	PCB plug-in connector, female plug, 5.08 mm, Number of poles: 4,
GTIN (EAN)	4032248690206	90°, PUSH IN with actuator, Clamping range, max. : 3.31 mm², Box
Qty.	60 ST	

WMF 2.5 BLZ

Weidmüller Interface GmbH & Co. KG
 Klingenbergstraße 26
 D-32758 Detmold
 Germany

www.weidmueller.com

Accessories

Type	BLF 5.08HC/04/90F SN OR...	Version
Order No.	1002110000	PCB plug-in connector, female plug, 5.08 mm, Number of poles: 4,
GTIN (EAN)	4032248694068	90°, PUSH IN with actuator, Clamping range, max. : 3.31 mm², Box
Qty.	60 ST	
Type	BLF 5.08HC/05/90F SN OR...	Version
Order No.	1002120000	PCB plug-in connector, female plug, 5.08 mm, Number of poles: 5,
GTIN (EAN)	4032248694075	90°, PUSH IN with actuator, Clamping range, max. : 3.31 mm², Box
Qty.	48 ST	
Type	BLF 5.08HC/06/90F SN BK...	Version
Order No.	1000260001	PCB plug-in connector, female plug, 5.08 mm, Number of poles: 6,
GTIN (EAN)	4032248690220	90°, PUSH IN with actuator, Clamping range, max. : 3.31 mm², Box
Qty.	42 ST	
Type	BLF 5.08HC/06/90F SN OR...	Version
Order No.	1002130000	PCB plug-in connector, female plug, 5.08 mm, Number of poles: 6,
GTIN (EAN)	4032248694082	90°, PUSH IN with actuator, Clamping range, max. : 3.31 mm², Box
Qty.	42 ST	
Type	BLF 5.08HC/07/90F SN OR...	Version
Order No.	1002140000	PCB plug-in connector, female plug, 5.08 mm, Number of poles: 7,
GTIN (EAN)	4032248694099	90°, PUSH IN with actuator, Clamping range, max. : 3.31 mm², Box
Qty.	36 ST	
Type	BLF 5.08HC/08/90F SN BK...	Version
Order No.	1000280001	PCB plug-in connector, female plug, 5.08 mm, Number of poles: 8,
GTIN (EAN)	4032248690244	90°, PUSH IN with actuator, Clamping range, max. : 3.31 mm², Box
Qty.	36 ST	
Type	BLF 5.08HC/08/90F SN OR...	Version
Order No.	1002150000	PCB plug-in connector, female plug, 5.08 mm, Number of poles: 8,
GTIN (EAN)	4032248694105	90°, PUSH IN with actuator, Clamping range, max. : 3.31 mm², Box
Qty.	36 ST	
Type	BLF 5.08HC/09/90F SN OR...	Version
Order No.	1002160000	PCB plug-in connector, female plug, 5.08 mm, Number of poles: 9,
GTIN (EAN)	4032248694310	90°, PUSH IN with actuator, Clamping range, max. : 3.31 mm², Box
Qty.	30 ST	
Type	BLF 5.08HC/10/90F SN BK...	Version
Order No.	1000300001	PCB plug-in connector, female plug, 5.08 mm, Number of poles: 10,
GTIN (EAN)	4032248690268	90°, PUSH IN with actuator, Clamping range, max. : 3.31 mm², Box
Qty.	30 ST	
Type	BLF 5.08HC/10/90F SN OR...	Version
Order No.	1002170000	PCB plug-in connector, female plug, 5.08 mm, Number of poles: 10,
GTIN (EAN)	4032248694327	90°, PUSH IN with actuator, Clamping range, max. : 3.31 mm², Box
Qty.	30 ST	
Type	BLF 5.08HC/11/90F SN OR...	Version
Order No.	1002180000	PCB plug-in connector, female plug, 5.08 mm, Number of poles: 11,
GTIN (EAN)	4032248694334	90°, PUSH IN with actuator, Clamping range, max. : 3.31 mm², Box
Qty.	24 ST	
Type	BLF 5.08HC/12/90F SN BK...	Version
Order No.	1000320001	PCB plug-in connector, female plug, 5.08 mm, Number of poles: 12,
GTIN (EAN)	4032248690282	90°, PUSH IN with actuator, Clamping range, max. : 3.31 mm², Box
Qty.	24 ST	
Type	BLF 5.08HC/12/90F SN OR...	Version
Order No.	1002190000	PCB plug-in connector, female plug, 5.08 mm, Number of poles: 12,
GTIN (EAN)	4032248694341	90°, PUSH IN with actuator, Clamping range, max. : 3.31 mm², Box
Qty.	24 ST	

WMF 2.5 BLZ

Weidmüller Interface GmbH & Co. KG
 Klingenbergstraße 26
 D-32758 Detmold
 Germany

www.weidmueller.com

Accessories

Type	BLF 5.08HC/13/90F SN OR...	Version
Order No.	1002200000	PCB plug-in connector, female plug, 5.08 mm, Number of poles: 13,
GTIN (EAN)	4032248694358	90°, PUSH IN with actuator, Clamping range, max. : 3.31 mm², Box
Qty.	24 ST	
Type	BLF 5.08HC/14/90F SN OR...	Version
Order No.	1002210000	PCB plug-in connector, female plug, 5.08 mm, Number of poles: 14,
GTIN (EAN)	4032248694365	90°, PUSH IN with actuator, Clamping range, max. : 3.31 mm², Box
Qty.	18 ST	
Type	BLF 5.08HC/15/90F SN OR...	Version
Order No.	1002220000	PCB plug-in connector, female plug, 5.08 mm, Number of poles: 15,
GTIN (EAN)	4032248694372	90°, PUSH IN with actuator, Clamping range, max. : 3.31 mm², Box
Qty.	18 ST	
Type	BLF 5.08HC/16/90F SN BK...	Version
Order No.	1000360001	PCB plug-in connector, female plug, 5.08 mm, Number of poles: 16,
GTIN (EAN)	4032248690329	90°, PUSH IN with actuator, Clamping range, max. : 3.31 mm², Box
Qty.	18 ST	
Type	BLF 5.08HC/16/90F SN OR...	Version
Order No.	1002230000	PCB plug-in connector, female plug, 5.08 mm, Number of poles: 16,
GTIN (EAN)	4032248694389	90°, PUSH IN with actuator, Clamping range, max. : 3.31 mm², Box
Qty.	18 ST	
Type	BLF 5.08HC/17/90F SN OR...	Version
Order No.	1002240000	PCB plug-in connector, female plug, 5.08 mm, Number of poles: 17,
GTIN (EAN)	4032248694396	90°, PUSH IN with actuator, Clamping range, max. : 3.31 mm², Box
Qty.	18 ST	
Type	BLF 5.08HC/18/90F SN OR...	Version
Order No.	1002250000	PCB plug-in connector, female plug, 5.08 mm, Number of poles: 18,
GTIN (EAN)	4032248694402	90°, PUSH IN with actuator, Clamping range, max. : 3.31 mm², Box
Qty.	18 ST	
Type	BLF 5.08HC/19/90F SN OR...	Version
Order No.	1002260000	PCB plug-in connector, female plug, 5.08 mm, Number of poles: 19,
GTIN (EAN)	4032248694419	90°, PUSH IN with actuator, Clamping range, max. : 3.31 mm², Box
Qty.	12 ST	
Type	BLF 5.08HC/20/90F SN OR...	Version
Order No.	1002270000	PCB plug-in connector, female plug, 5.08 mm, Number of poles: 20,
GTIN (EAN)	4032248694433	90°, PUSH IN with actuator, Clamping range, max. : 3.31 mm², Box
Qty.	12 ST	
Type	BLF 5.08HC/21/90F SN OR...	Version
Order No.	1477230000	PCB plug-in connector, female plug, 5.08 mm, Number of poles: 21,
GTIN (EAN)	4050118284546	90°, PUSH IN with actuator, Clamping range, max. : 3.31 mm², Box
Qty.	12 ST	