

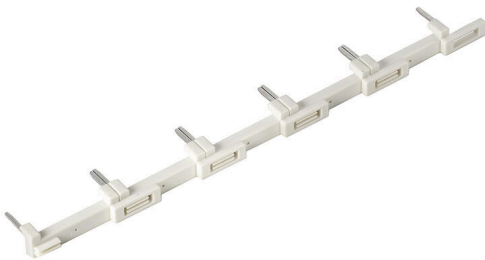
**SCM-I QV S****Weidmüller Interface GmbH & Co. KG**

Klingenbergstraße 26

D-32758 Detmold

Germany

www.weidmueller.com

**Product image**

Cross-connection for the sockets in the D-SERIES DRM.

**General ordering data**

Version	RIDERSERIES RCM, Cross-connector
Order No.	<a href="#">1132080000</a>
Type	SCM-I QV S
GTIN (EAN)	4032248912193
Qty.	10 items
Delivery status	This article will no longer be available in the future.
Available until	2026-06-30T00:00:00+02:00
Alternative product	<a href="#">CXM CCS 6P GY</a>

## SCM-I QV S

**Weidmüller Interface GmbH & Co. KG**  
 Klingenbergstraße 26  
 D-32758 Detmold  
 Germany

www.weidmueller.com

## Technical data

### Approvals

ROHS	Conform
------	---------

### Dimensions and weights

Net weight	5.72 g
------------	--------

### Temperatures

Storage temperature	-40 °C...85 °C	Ambient temperature	-45 °C...70 °C
Operating temperature			

### Environmental Product Compliance

RoHS Compliance Status	Compliant without exemption
REACH SVHC	No SVHC above 0.1 wt%

### Cross-connection data

Rated current	12 A	Insulation	Yes
Touch-safe protection	Yes	Colour	white
Number of cross-connected terminals	6	Number of poles	6
Pitch in mm (P)	27.00 mm	Version	can be cut to length

### General data

Version	can be cut to length	Colour	white
---------	----------------------	--------	-------

### Connection data

Pitch in mm (P)	27.00 mm
-----------------	----------

### Classifications

ETIM 8.0	EC002586	ETIM 9.0	EC002586
ETIM 10.0	EC002586	ECLASS 14.0	27-37-16-92
ECLASS 15.0	27-37-16-92		

SCM-I QV S

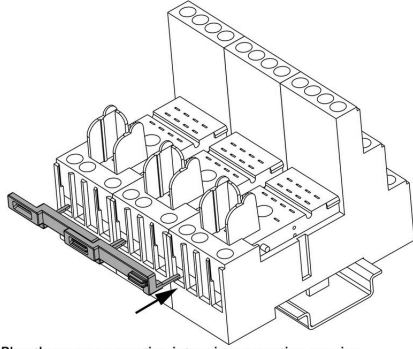
Weidmüller Interface GmbH & Co. KG  
Klingenbergstraße 26  
D-32758 Detmold  
Germany

www.weidmueller.com

Drawings

Example of use

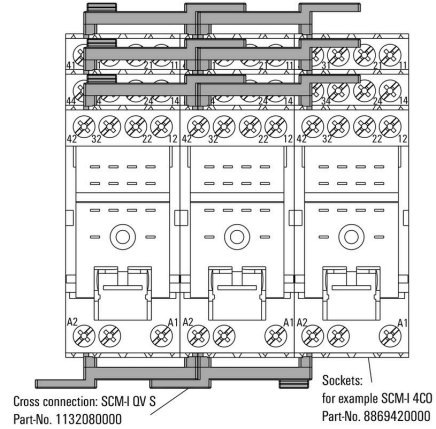
How to install cross connection



Plug the cross connection into wire-connection opening and fix it with tighten the screw

Plug the cross-connection in the cable connections

Example of use



Cross-connector bridges to the same connection on the neighbouring base