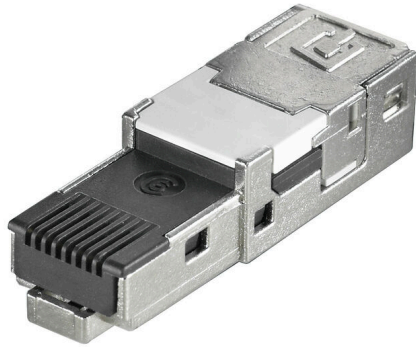


## IE-PI-RJ45-FH-A

**Weidmüller Interface GmbH & Co. KG**  
Klingenbergstraße 26  
D-32758 Detmold  
Germany

[www.weidmueller.com](http://www.weidmueller.com)



RJ45 inserts for plug-in connectors ver.1 / 4 / 5 / 14,  
HDC and junction boxes IE-OM...; IE-OP...; IE-CC...

### General ordering data

Version	Plug insert RJ45 IDC, Plug insert RJ45, no tools required, TIA-568A
Order No.	<a href="#">1132010000</a>
Type	IE-PI-RJ45-FH-A
GTIN (EAN)	4032248912001
Qty.	10 items

## Technical data

## Approvals

Approvals



ROHS	Conform
UL File Number Search	<a href="#">UL Website</a>
Certificate No. (cURus)	E471884
Certificate no. (cULus)	E316369

## Dimensions and weights

Net weight	5.87 g
------------	--------

## Temperatures

Storage temperature	Operating temperature	-40 °C...70 °C
Installation temperature		

## Environmental Product Compliance

RoHS Compliance Status	Compliant without exemption
REACH SVHC	No SVHC above 0.1 wt%

## General data

Fire load	49 kJ	Connection 1	RJ45
Connection 2	IDC	Description of article	Plug insert RJ45, no tools required
Wiring	TIA-568A	Colour	Miscellaneous
Housing main material	Zinc diecast	Insulation cross-section, min.	0.85 mm
Insulation cross-section, max.	1.6 mm	Category	Cat.6A / Class EA (ISO/IEC 11801 2010)
Contact surface	Gold over Nickel, Au ≥ 0.8 µm	Connection diameter, solid	0.4...0.64 mm
Conductor connection cross-section, solid (AWG)	AWG 24...AWG 22	Conductor connection cross-section, flexible (AWG)	AWG 26...AWG 22
Conductor connection cross-section, extremely flexible	, Approval of the cable by Weidmüller necessary	Conductor connection cross-section, extremely flexible (AWG)	, Approval of the cable by Weidmüller necessary
Note, very finely stranded line connection	Approval of the cable by Weidmüller necessary	Shielding	360° all-round enclosure
Protection degree	IP67 with housing	Plugging cycles	750
Ability to reconnect	≥ 10 cycles (for the same or larger cross-section)		

## Electrical properties

Contact resistance	≤ 20 mΩ	Dielectric strength, contact / shield	≥ 1500 V AC/DC
Dielectric strength, contact / contact	≥ 1000 V AC/DC	Insulation resistance	500 MΩ
Current-carrying capacity at 50 °C	1 A	PoE / PoE+	conforming to IEEE 802.3at

## General standards

Certificate No. (cURus)	E471884	Connector standard	IEC 60603-7-51
UL standard for communication accessories	UL 1863	IP protection classes	IEC 60529

## Technical data

Certificate no. (cULus) E316369

### Important note

Product information RJ45 inserts for plug-in connectors ver.1 / 4 / 5 / 14 and HDC

### Classifications

ETIM 8.0	EC001121	ETIM 9.0	EC001121
ETIM 10.0	EC001121	ECLASS 14.0	27-44-03-90
ECLASS 15.0	27-44-03-90		

**Drawings**

**Printing**

