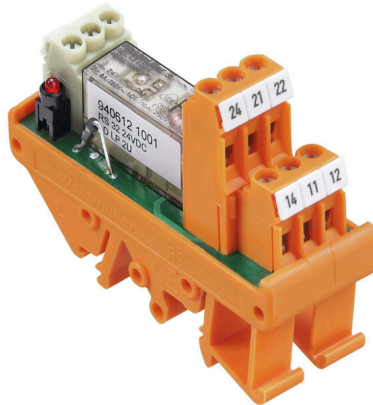


RS 32 24-48VUC LD LP 2U

Weidmüller Interface GmbH & Co. KG
 Klingenbergstraße 26
 D-32758 Detmold
 Germany

www.weidmueller.com

Product image



General ordering data

Version	RS-SERIES, Relay module, Number of contacts: 2, CO contact AgNi 90/10, Rated control voltage: 24 V UC $\pm 10\%$, 48 V UC $\pm 10\%$, Continuous current: 4 A, Screw connection, Test button available: No
Order No.	1122661001
Type	RS 32 24-48VUC LD LP 2U
GTIN (EAN)	4032248046225
Qty.	10 items
Delivery status	Discontinued
Available until	2022-11-25T00:00:00+01:00
Alternative product	TRS 24-230VUC 2CO ED2

RS 32 24-48VUC LD LP 2U

Weidmüller Interface GmbH & Co. KG
 Klingenbergstraße 26
 D-32758 Detmold
 Germany

www.weidmueller.com

Technical data

Approvals

Approvals



ROHS Conform

Dimensions and weights

Depth	63.5 mm	Depth (inches)	2.5 inch
Height	70 mm	Height (inches)	2.7559 inch
Width	25 mm	Width (inches)	0.9842 inch
Net weight	45.68 g		

Temperatures

Storage temperature	-40 °C...60 °C	Operating temperature	-25 °C...40 °C
Humidity	40 °C / 93 % rel. humidity, no condensation		

Environmental Product Compliance

RoHS Compliance Status	Compliant with exemption		
RoHS Exemption (if applicable/known)	7a, 7cI		
REACH SVHC	Lead 7439-92-1		
SCIP	3820ceea-2b49-4a61-bda5-08f3867b3419		

Control side

Rated control voltage	24 V UC ±10 %, 48 V UC ±10 %	Rated current AC	28 mA / 22 mA
Rated current DC	18 mA / 20 mA	Power rating	0.6 W / 0.9 VA
Status indicator	Green LED	Protective circuit	Rectifier

Load side

Rated switching voltage	250 V AC	Max. switching frequency at rated load	0.1 Hz
Max. switching voltage, AC	250 V	Inrush current	6 A
AC switching capacity (resistive), max.	1000 VA	Switch-on delay	< 13 ms
Switch-off delay	≤ 10 ms	Contact type	2 CO contact (AgNi 90/10)
Mechanical service life	30 x 10 ⁶ switching cycles	Min. switching power	1 mA @ 24 V, 10 mA @ 10 V, 100 mA / 5 V DC

General data

Version	soldered relay	Mounting rail	TS 32, TS 35
Test button available	No	Mechanical switch position indicator	No
Colour	orange		

Insulation coordination

Rated voltage	300 V	Pollution severity	2
Surge voltage category	III	Creepage and clearance distance input -> 3 mm output	

RS 32 24-48VUC LD LP 2U

Weidmüller Interface GmbH & Co. KG
Klingenbergstraße 26
D-32758 Detmold
Germany

www.weidmueller.com

Technical data

Dielectric strength to mounting rail	4 kVeff / 1 Min.	Impulse withstand voltage	4 kV (1.2/50 µs)
Protection degree	IP20		

Connection data

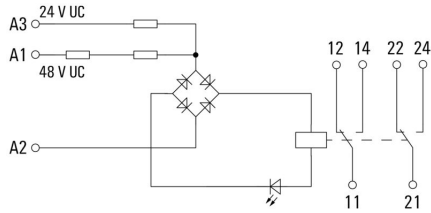
Wire connection method	Screw connection	Stripping length, rated connection	8 mm
Clamping range, rated connection	2.5 mm ²	Clamping range, min.	0.5 mm ²
Clamping range, max.	4 mm ²		

Classifications

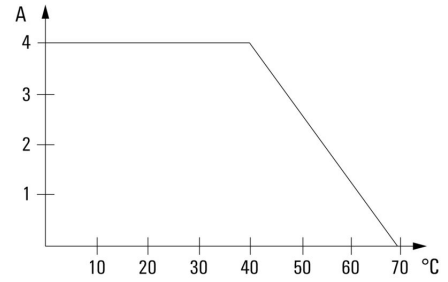
ETIM 8.0	EC001437	ETIM 9.0	EC001437
ETIM 10.0	EC001437	ECLASS 14.0	27-37-16-01
ECLASS 15.0	27-37-16-01		

Drawings

Wiring diagram



Graph



DC load limit curve