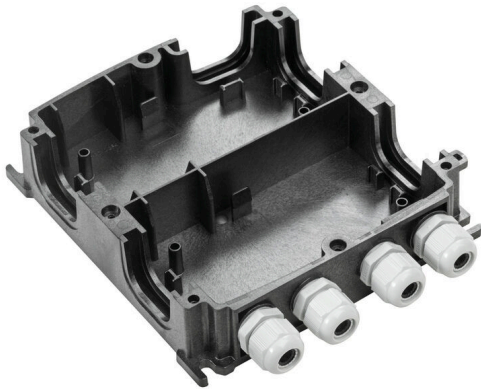


BG GH 10P 4XVG PT6

Weidmüller Interface GmbH & Co. KG
Klingenbergstraße 26
D-32758 Detmold
Germany

www.weidmueller.com



The FieldPower® housings are highly robust and meet the highest UL flammability class 5 VA.

- The "TS 35 PT6" mounting rail module and PT6 contact unit are easy to snap on.
- Hinged seals allow pre-assembled plug cables to also be used.
- The high cover versions enable the device to be installed.

For cable seals consult accessories.

General ordering data

Version	FieldPower® enclosures, 181 mm, 223 mm, 42 mm, IP65, in complete state, glass-fibre reinforced polycarbonate, black
Order No.	1121990000
Type	BG GH 10P 4XVG PT6
GTIN (EAN)	4032248903030
Qty.	10 items

BG GH 10P 4XVG PT6

Weidmüller Interface GmbH & Co. KG
 Klingenbergstraße 26
 D-32758 Detmold
 Germany

www.weidmueller.com

Technical data

Approvals

Approvals



ROHS	Conform
UL File Number Search	UL Website
Certificate No. (UL)	E256877

Dimensions and weights

Depth	42 mm	Depth (inches)	1.6535 inch
Height	181 mm	Height (inches)	7.126 inch
Width	223 mm	Width (inches)	8.7795 inch
Net weight	367 g		

Temperatures

Storage temperature	-40 °C...85 °C	Operating temperature	-20 °C...80 °C
---------------------	----------------	-----------------------	----------------

Environmental Product Compliance

RoHS Compliance Status	Compliant without exemption
REACH SVHC	Potassium perfluorobutane sulfonate 29420-49-3
SCIP	210f646e-64fd-46de-9a7c-8dff222ea2cb

Cable gland

Number of cable glands	4	Cable gland clamping area, min.	6 mm
Cable gland material	Polyamide 6	Cable gland clamping area, max.	12 mm

General data

Enclosure material	glass-fibre reinforced polycarbonate	Silicone	No
Colour	black	Protection degree	IP65, in complete state
UL 94 flammability rating	5VA	Type of mounting	Screw mounting, Fixing lugs
With cable gland	Yes		

Classifications

ETIM 8.0	EC000261	ETIM 9.0	EC000261
ETIM 10.0	EC000261	ECLASS 14.0	27-18-01-01
ECLASS 15.0	27-18-01-01		

BG GH 10P 4XVG PT6

Weidmüller Interface GmbH & Co. KG
Klingenbergstraße 26
D-32758 Detmold
Germany

Drawings

www.weidmueller.com

Drilling template

