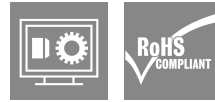
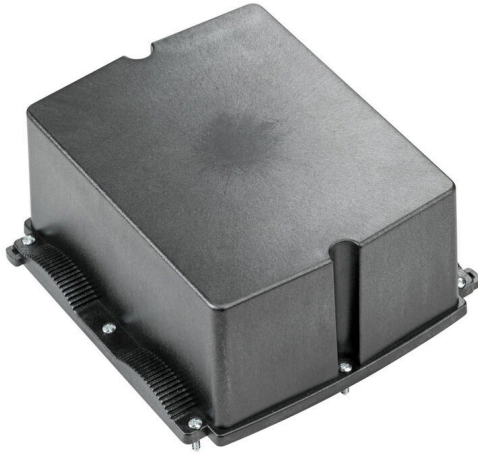


BG GHDE 10P HO PT6

Weidmüller Interface GmbH & Co. KG
Klingenbergstraße 26
D-32758 Detmold
Germany

www.weidmueller.com

Do not use product for
new developments



The FieldPower® housings are highly robust and meet the highest UL flammability class 5 VA.

- The "TS 35 PT6" mounting rail module and PT6 contact unit are easy to snap on.
- Hinged seals allow pre-assembled plug cables to also be used.
- The high cover versions enable the device to be installed.

For cable seals consult accessories.

General ordering data

Version	FieldPower® enclosures, 181 mm, 192 mm, 87 mm, IP65, in complete state, glass-fibre reinforced polycarbonate, black
Order No.	1121950000
Type	BG GHDE 10P HO PT6
GTIN (EAN)	4032248903016
Qty.	10 items

BG GHDE 10P HO PT6

Weidmüller Interface GmbH & Co. KG
 Klingenbergstraße 26
 D-32758 Detmold
 Germany

www.weidmueller.com

Technical data

Approvals

Approvals



ROHS Conform
 UL File Number Search [UL Website](#)
 Certificate No. (UL) E310075

Dimensions and weights

Depth	87 mm	Depth (inches)	3.4252 inch
Height	181 mm	Height (inches)	7.126 inch
Width	192 mm	Width (inches)	7.559 inch
Net weight	394.77 g		

Temperatures

Storage temperature	-40 °C...85 °C	Operating temperature	-40 °C...85 °C
---------------------	----------------	-----------------------	----------------

Environmental Product Compliance

RoHS Compliance Status Compliant without exemption
 REACH SVHC Potassium perfluorobutane sulfonate 29420-49-3
 SCIP 210f646e-64fd-46de-9a7c-8dff222ea2cb

General data

Basic material	Plastic, GRP	Enclosure material	glass-fibre reinforced polycarbonate
Silicone	No	Colour	black
Protection degree	IP65, in complete state	UL 94 flammability rating	5VA
Torque for lid screws	2 Nm	Lid attachment	TX20 screws
Installation advice	Lid screws included		

Classifications

ETIM 8.0	EC000261	ETIM 9.0	EC000261
ETIM 10.0	EC000261	ECLASS 14.0	27-18-01-01
ECLASS 15.0	27-18-01-01		

BG GHDE 10P HO PT6

Weidmüller Interface GmbH & Co. KG
Klingenbergstraße 26
D-32758 Detmold
Germany

Drawings

www.weidmueller.com

Drilling template

