

HDC IP68 HP 24B A

Weidmüller Interface GmbH & Co. KG
 Klingenbergstraße 26
 D-32758 Detmold
 Germany

www.weidmueller.com



The RockStar® HighPower housings are manufactured from high-strength die-cast aluminium and offer perfect protection against harsh environmental conditions thanks to continual optimisation. The multi-part housing gives users the opportunity to examine work processes down to the last step in the workflow.

General ordering data

Version	HDC enclosures, Installation size: 8, Protection degree: IP68, IP69, in plugged condition, Bulkhead housing, Clamping yoke connection, Standard, Size of cable entries: none
Order No.	1120040000
Type	HDC IP68 HP 24B A
GTIN (EAN)	4032248901418
Qty.	1 items

HDC IP68 HP 24B A

Weidmüller Interface GmbH & Co. KG
Klingenbergstraße 26
D-32758 Detmold
Germany

www.weidmueller.com

Technical data

Approvals

ROHS	Conform
------	---------

Dimensions and weights

Depth	216 mm	Depth (inches)	8.5039 inch
Height	49.8 mm	Height (inches)	1.9606 inch
Width	72 mm	Width (inches)	2.8346 inch
Net weight	643 g		

Temperatures

Limit temperature	-50 °C ... 120 °C
-------------------	-------------------

Environmental Product Compliance

RoHS Compliance Status	Compliant without exemption	
REACH SVHC	No SVHC above 0.1 wt%	
Chemical resistance	Substance	Acetone
	Chemical resistance	Resistant
	Substance	Diesel oil
	Chemical resistance	Unstable
	Substance	Ethyl alcohol
	Chemical resistance	Resistant
	Substance	Transmission oil
	Chemical resistance	Conditionally resistant
	Substance	Hydraulic oil
	Chemical resistance	Conditionally resistant
	Substance	Petroleum benzine
	Chemical resistance	Unstable
	Substance	Sweat
	Chemical resistance	Conditionally resistant
	Substance	Premium gasoline
	Chemical resistance	Unstable
Substance	Water	
Chemical resistance	Resistant	
Substance	UV	
Chemical resistance	Resistant	
Substance	Ozone	
Chemical resistance	Resistant	

General data

Number of poles	0	Tightening torque	11 Nm
Design of housing	Bulkhead housing	Installation size	8
Colour	black, black (similar to RAL 9005)	Housing main material	diecast aluminium
Tightening torque, max. PE connection	11 Nm	Surface finish	Powder coating
Type	Bulkhead (feed-through)	Tightening torque, min. PE connection	11 Nm
Series	HighPower	Free from halogens	false
EMC housings	Yes	BG	8
Material of mounting bracket	Aluminium	Material of locking element	Stainless steel, rust-proof
Protection degree	IP68, IP69, in plugged condition		

HDC IP68 HP 24B A

Weidmüller Interface GmbH & Co. KG

Klingenbergstraße 26
D-32758 Detmold
Germany

www.weidmueller.com

Technical data

General data

Surface finish	Powder coating	Protection degree	IP68, IP69, in plugged condition
Series	HighPower		

Version

Size of cable entries	none	Top part/bottom part/lid	lower part
Cover	without cover	Tightening torque	11 Nm
Number of cable entry on top	0	Number of cable entry sideways	0
Design of housing	Bulkhead housing	Design of locking system	Clamping yoke connection
Design	Standard	Installation size	8
Cable entry	No	Type	Bulkhead (feed-through)
Clamp version	Clamping yoke connection	Sealing	Silicone rubber
Colour (RAL)	RAL 9011, RAL 9005	BG	8
Suitable for ModuPlug®	No		

Important note

Product information	Depending on the intended operation, internally generated voltages can superimpose the working voltage and contain corresponding peaks. It is imperative to ensure that these peak voltages do not exceed the rated voltage. For applications outside of this specification, please contact us.
---------------------	---

Classifications

ETIM 8.0	EC000437	ETIM 9.0	EC000437
ETIM 10.0	EC000437	ECLASS 14.0	27-44-02-02
ECLASS 15.0	27-44-02-02		

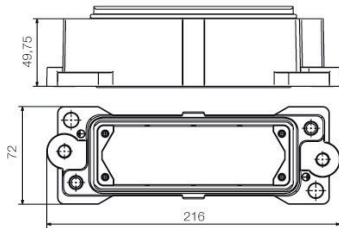
HDC IP68 HP 24B A

Weidmüller Interface GmbH & Co. KG
Klingenbergstraße 26
D-32758 Detmold
Germany

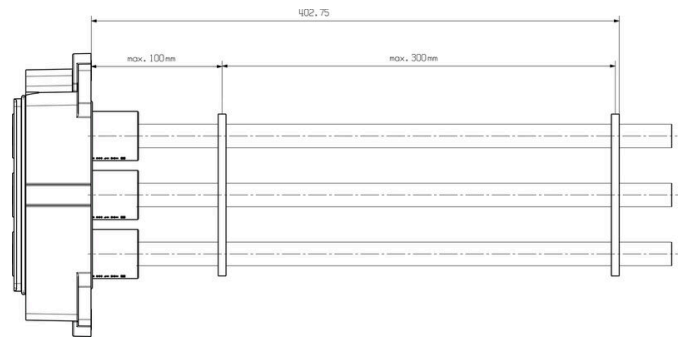
www.weidmueller.com

Drawings

Drawing



Drawing



To avoid damage to the contacts and insulating sleeves, we recommend fixing the cable. The corresponding distances are shown in the following drawing. The cable fixation is not included in the scope of delivery.

HDC IP68 HP 24B A

Weidmüller Interface GmbH & Co. KG
 Klingenbergstraße 26
 D-32758 Detmold
 Germany

www.weidmueller.com

Accessories

Plug housing

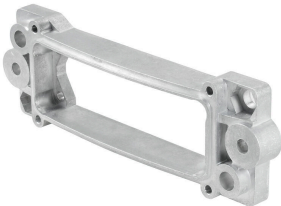


The RockStar® HighPower housings are manufactured from high-strength die-cast aluminium and offer perfect protection against harsh environmental conditions thanks to continual optimisation. The multi-part housing gives users the opportunity to examine work processes down to the last step in the workflow.

General ordering data

Type	HDC IP68 HP 24B TO	Version	
Order No.	1079930000	HDC enclosures, Installation size: 8, Protection degree: IP68, IP69,	
GTIN (EAN)	4032248842032	in plugged condition, Plug housing, Clamping yoke connection,	
Qty.	1 ST	Standard, Size of cable entries: none	

Counter-frame



Weidmüller's HighPower accessories complement the RockStar® HighPower connectors and enhance their safety, stability, and ease of use. Robust covers, precise coding elements, and high quality fastening components ensure reliable high current connections—ideal for energy, rail, and industrial applications.

General ordering data

Type	HDC IP68 24B HP FRAME	Version	
Order No.	1282820000	HDC enclosures, Installation size: 8, Protection degree: IP68, IP69,	
GTIN (EAN)	4050118073010	in plugged condition, Counter frame, Clamping yoke connection,	
Qty.	1 ST	Standard, Size of cable entries: none	