

## SAMPLE LP CH20M PPX

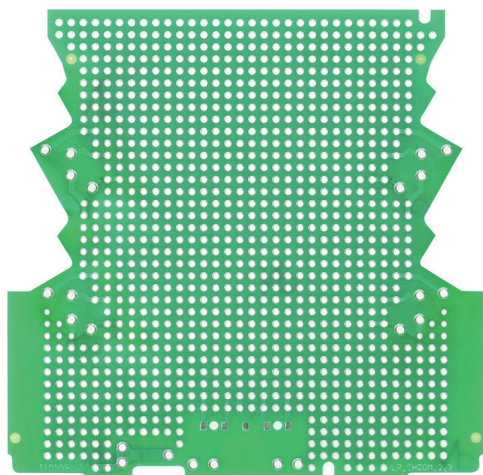
Weidmüller Interface GmbH &amp; Co. KG

Klingenbergstraße 26

D-32758 Detmold

Germany

www.weidmueller.com



Future-proof solutions for industrial electronics for mounting in the control cabinet

Electronichousings are crucial for the integration of electronic assemblies in the control cabinet. They protect sensitive components and ensure reliable connections. Thanks to high-quality materials, they offer long-term solutions for industrial applications.

Your advantages:

Flexibility: Scalable solutions for different requirements

Safety: Robust design to protect your electronics

Efficiency: Simple installation and optimized connection technology

Housing solutions for every application:

Our portfolio includes modular housings (e.g. CH20M), small housings and profile housings designed for control, signal conversion and safety applications. These housings offer customizable designs, easy mounting and high connection capacity.

Customization:

In addition to standard solutions, we offer customization in design, color and printing. The Weidmüller Configurator enables individual design.

Our service:

We offer expert advice and technical support for your projects. In the download area you will find CAD data, data sheets and installation instructions for efficient integration.

## General ordering data

Version	Electronics housing sample, OMNIMATE Housing - series CH20M green, PCB for self-assembly, CH20M12 - 67, For 2 connection levels, Width: 1.6 mm
Order No.	<a href="#">1105580000</a>
Type	SAMPLE LP CH20M PPX
GTIN (EAN)	4032248880652
Qty.	1 items

## SAMPLE LP CH20M PPX

Weidmüller Interface GmbH &amp; Co. KG

Klingenbergstraße 26

D-32758 Detmold

Germany

www.weidmueller.com

## Technical data

## Approvals

ROHS	Conform
------	---------

## Dimensions and weights

Depth	99 mm	Depth (inches)	3.8976 inch
Height	101 mm	Height (inches)	3.9764 inch
Width	1.6 mm	Width (inches)	0.063 inch
Net weight	28 g		

## Environmental Product Compliance

RoHS Compliance Status	Compliant
REACH SVHC	No SVHC above 0.1 wt%

## Material data

Insulating material	PA 66 GF 30	Insulating material group	II
Surface finish	untreated		

## General data

Colour	green	Protection degree	IP20 in installed state
Colour chart (similar)	RAL 6032		

## Classifications

ETIM 8.0	EC001031	ETIM 9.0	EC001031
ETIM 10.0	EC001031	ECLASS 14.0	27-19-02-04
ECLASS 15.0	27-19-02-04		

## SAMPLE LP CH20M PPX

**Weidmüller Interface GmbH & Co. KG**  
Klingenbergstraße 26  
D-32758 Detmold  
Germany

## Drawings

Layer Stack Up Detail for: 1105580000\_03.PcbDoc

Layer Name	Order	Material	Thickness	Dielectric Constant	Dielectric Loss	Notes
Top Solder Mask	1	OSP	0.015mm			Solder Resist
Top Layer	2	FR-4	0.035mm	1.5mm	0.015mm	Core
Bottom Layer	3	FR-4	0.035mm	1.5mm	0.015mm	Core
Bottom Solder Mask	4	OSP	0.015mm			Solder Resist

PCB thickness over all 1.0mm +/- 0.13mm

