

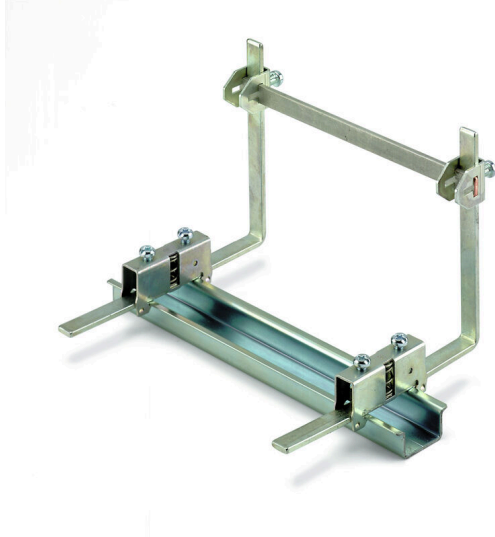
**WSH 19 MT****Weidmüller Interface GmbH & Co. KG**

Klingenbergstraße 26

D-32758 Detmold

Germany

www.weidmueller.com

**Product image**

The comprehensive accessories of the Klippon® Connect portfolio are perfectly matched down to the last detail. This facilitates mounting while adhering to required norms

**General ordering data**

Version	Accessories, Rail support, metal
Order No.	<a href="#">1083200000</a>
Type	WSH 19 MT
GTIN (EAN)	4008 190059538
Qty.	10 items

## WSH 19 MT

Weidmüller Interface GmbH &amp; Co. KG

Klingenbergstraße 26

D-32758 Detmold

Germany

www.weidmueller.com

## Technical data

## Approvals

ROHS Conform

## Dimensions and weights

Depth	143.3 mm	Depth (inches)	5.6417 inch
Height	150 mm	Height (inches)	5.9055 inch
Width	14.9 mm	Width (inches)	0.5866 inch
Net weight	112.2 g		

## Temperatures

Storage temperature	-25 °C...55 °C	Ambient temperature	-5 °C...40 °C
Continuous operating temp., max.	85 °C		

## Environmental Product Compliance

RoHS Compliance Status	Compliant without exemption
REACH SVHC	No SVHC above 0.1 wt%

## Material data

Basic material	metal	Colour	grey
UL 94 flammability rating	None		

## System specifications

Version	For the mounting rails	Mounting rail	TS 35
---------	------------------------	---------------	-------

## Additional technical data

Type of fixing	when screwed in	Installation advice	Direct mounting
Explosion-tested version	No	Type of mounting	when screwed in

## Dimensions

Pitch in mm (P)	8.00 mm
-----------------	---------

## General

Number of poles	1	Installation advice	Direct mounting
Mounting rail	TS 35		

## Classifications

ETIM 8.0	EC001166	ETIM 9.0	EC001166
ETIM 10.0	EC001166	ECLASS 14.0	27-40-06-07
ECLASS 15.0	27-40-06-07		

## WSH 19 MT

Weidmüller Interface GmbH &amp; Co. KG

Klingenbergstraße 26

D-32758 Detmold

Germany

www.weidmueller.com

## Accessories

## Busbars



With our bus bars in various materials and the associated accessories, you can connect cables in the smallest installation space. Depending on the application, potentials can be collected, distributed or dissipated.

## General ordering data

Type	SA 3.00X10.00X1000 CUZN...	Version
Order No.	<a href="#">0259800000</a>	Busbar (terminal), silver, Height: 1000 mm, Depth: 3 mm, Brass
GTIN (EAN)	4008190049300	
Qty.	1 M	
Type	SSCH 10X3X1000 CU/SN	Version
Order No.	<a href="#">0348900000</a>	Busbar (terminal), silver, Height: 1000 mm, Depth: 3 mm, Copper
GTIN (EAN)	4008190024802	
Qty.	25 M	
Type	SSCH 15X6X1000 CU/SN	Version
Order No.	<a href="#">0357400000</a>	Busbar (terminal), silver, Height: 1000 mm, Depth: 6 mm, Copper
GTIN (EAN)	4008190169572	
Qty.	1 M	
Type	SSCH 10X3X1000 ST/ZN	Version
Order No.	<a href="#">0438000000</a>	Busbar (terminal), silver, Height: 1000 mm, Depth: 3 mm, Steel
GTIN (EAN)	4008190080938	
Qty.	25 M	
Type	SSCH 6X6X1000 CU/SN	Version
Order No.	<a href="#">0571300000</a>	Busbar (terminal), silver, Height: 1000 mm, Depth: 6 mm, Copper
GTIN (EAN)	4008190015039	
Qty.	1 M	
Type	SSCH 7.3X1.2X1000	Version
Order No.	<a href="#">1071200000</a>	Busbar (terminal), silver, Height: 1000 mm, Depth: 1.2 mm, Copper
GTIN (EAN)	4008190279172	
Qty.	1 M	
Type	NSCH 1M	Version
Order No.	<a href="#">0280200000</a>	Busbar (terminal), Natural, Height: 15 mm, Depth: 2 mm, Copper
GTIN (EAN)	4008190012953	
Qty.	10 M	
Type	ESCH 1 M	Version
Order No.	<a href="#">0280300000</a>	Busbar (terminal), silver, Height: 12 mm, Depth: 2 mm, Steel
GTIN (EAN)	4008190143053	
Qty.	10 M	