

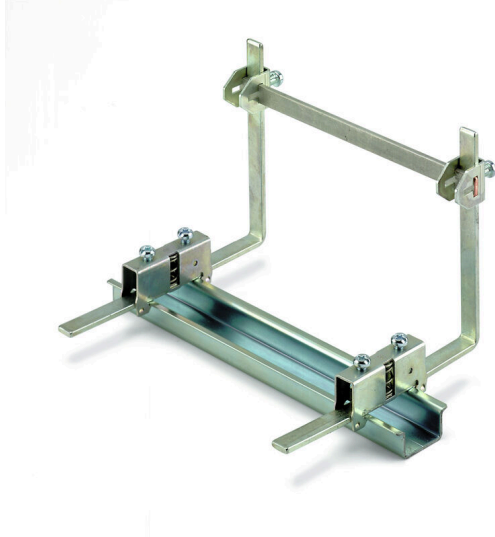
WSH 19 MT**Weidmüller Interface GmbH & Co. KG**

Klingenbergstraße 26

D-32758 Detmold

Germany

www.weidmueller.com

Product image

The comprehensive accessories of the Klippon® Connect portfolio are perfectly matched down to the last detail. This facilitates mounting while adhering to required norms

General ordering data

Version	Accessories, Rail support, metal
Order No.	1083200000
Type	WSH 19 MT
GTIN (EAN)	4008 190059538
Qty.	10 items

WSH 19 MT

Weidmüller Interface GmbH & Co. KG

Klingenbergstraße 26

D-32758 Detmold

Germany

www.weidmueller.com

Technical data

Approvals

ROHS	Conform
------	---------

Dimensions and weights

Depth	143.3 mm	Depth (inches)	5.6417 inch
Height	150 mm	Height (inches)	5.9055 inch
Width	14.9 mm	Width (inches)	0.5866 inch
Net weight	112.2 g		

Temperatures

Storage temperature	-25 °C...55 °C	Ambient temperature	-5 °C...40 °C
Continuous operating temp., max.	85 °C		

Environmental Product Compliance

RoHS Compliance Status	Compliant without exemption
REACH SVHC	No SVHC above 0.1 wt%

Material data

Basic material	metal	Colour	grey
UL 94 flammability rating	None		

System specifications

Version	For the mounting rails	Mounting rail	TS 35
---------	------------------------	---------------	-------

Additional technical data

Type of fixing	when screwed in	Installation advice	Direct mounting
Explosion-tested version	No	Type of mounting	when screwed in

Dimensions

Pitch in mm (P)	8.00 mm
-----------------	---------

General

Number of poles	1	Installation advice	Direct mounting
Mounting rail	TS 35		

Classifications

ETIM 8.0	EC001166	ETIM 9.0	EC001166
ETIM 10.0	EC001166	ECLASS 14.0	27-40-06-07
ECLASS 15.0	27-40-06-07		