

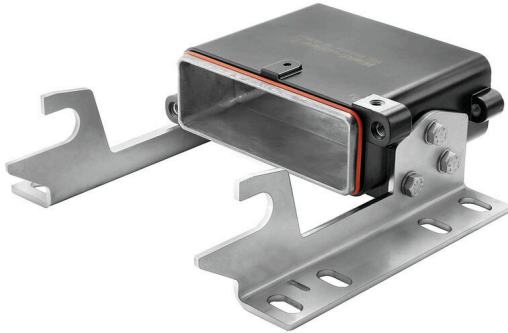
HDC IP68 HP 24B AS S**Weidmüller Interface GmbH & Co. KG**

Klingenbergstraße 26

D-32758 Detmold

Germany

www.weidmueller.com

**IP68**

The RockStar® HighPower housings are manufactured from high-strength die-cast aluminium and offer perfect protection against harsh environmental conditions thanks to continual optimisation. The multi-part housing gives users the opportunity to examine work processes down to the last step in the workflow.

General ordering data

Version	HDC enclosures, Installation size: 8, Protection degree: IP68, IP69, in plugged condition, Base housing, Clamping yoke connection, Standard
Order No.	1079920000
Type	HDC IP68 HP 24B AS S
GTIN (EAN)	4032248841936
Qty.	1 items

HDC IP68 HP 24B AS S

Weidmüller Interface GmbH & Co. KG
 Klingenbergstraße 26
 D-32758 Detmold
 Germany

www.weidmueller.com

Technical data

Approvals

ROHS Conform

Dimensions and weights

Depth	228 mm	Depth (inches)	8.9764 inch
Height	260 mm	Height (inches)	10.2362 inch
Width	84.5 mm	Width (inches)	3.3268 inch
Mounting dimension - height	170 mm	Mounting dimension - width	208 mm
Net weight	1834.4 g		

Temperatures

Limit temperature -50 °C ... 120 °C

Environmental Product Compliance

RoHS Compliance Status	Compliant without exemption	
REACH SVHC	No SVHC above 0.1 wt%	
Chemical resistance	Substance	Acetone
	Chemical resistance	Resistant
	Substance	Diesel oil
	Chemical resistance	Unstable
	Substance	Ethyl alcohol
	Chemical resistance	Resistant
	Substance	Transmission oil
	Chemical resistance	Conditionally resistant
	Substance	Hydraulic oil
	Chemical resistance	Conditionally resistant
	Substance	Petroleum benzine
	Chemical resistance	Unstable
	Substance	Sweat
	Chemical resistance	Conditionally resistant
	Substance	Premium gasoline
	Chemical resistance	Unstable
Substance	Water	
Chemical resistance	Resistant	
Substance	UV	
Chemical resistance	Resistant	
Substance	Ozone	
Chemical resistance	Resistant	

General data

Number of poles	0	Design of housing	Base housing
Installation size	8	Colour	black, black (similar to RAL 9005)
Surface finish	Powder coating	Type	Base housing
Series	HighPower	Free from halogens	false
BG	8	Protection degree	IP68, IP69, in plugged condition

HDC IP68 HP 24B AS S

Weidmüller Interface GmbH & Co. KG
 Klingenbergstraße 26
 D-32758 Detmold
 Germany

www.weidmueller.com

Technical data

General data

Housing main material	diecast aluminium	Surface finish	Powder coating
Protection degree	IP68, IP69, in plugged condition	Series	HighPower
EMC housings	Yes	Material of mounting bracket	Stainless steel, rust-proof
Material of locking element	Stainless steel, rust-proof		

Version

Top part/bottom part/lid	lower part	Cover	without cover
Number of cable entry sideways	0	Design of housing	Base housing
Design of locking system	Clamping yoke connection	Design	Standard
Installation size	8	Cable entry	No
Type	Base housing	Clamp version	Clamping yoke connection
Sealing	Silicone rubber	Colour (RAL)	RAL 9011, RAL 9005
BG	8		

Important note

Product information	Depending on the intended operation, internally generated voltages can superimpose the working voltage and contain corresponding peaks. It is imperative to ensure that these peak voltages do not exceed the rated voltage. For applications outside of this specification, please contact us.
---------------------	---

Classifications

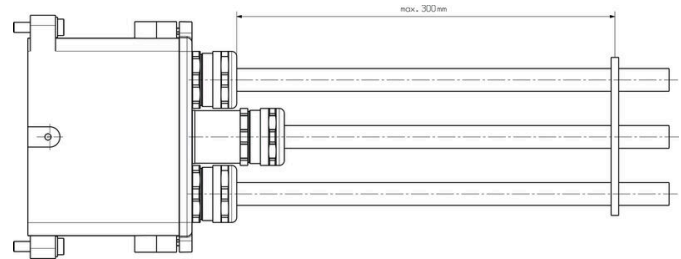
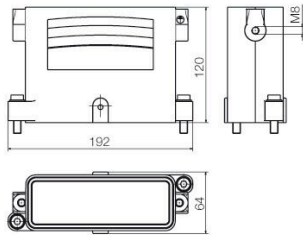
ETIM 8.0	EC000437	ETIM 9.0	EC000437
ETIM 10.0	EC000437	ECLASS 14.0	27-44-02-02
ECLASS 15.0	27-44-02-02		

HDC IP68 HP 24B AS S

Weidmüller Interface GmbH & Co. KG
Klingenbergstraße 26
D-32758 Detmold
Germany

Drawings

www.weidmueller.com



To avoid damage to the contacts and insulating sleeves, we recommend fixing the cable. The corresponding distances are shown in the following drawing. The cable fixation is not included in the scope of delivery.

HDC IP68 HP 24B AS S

Weidmüller Interface GmbH & Co. KG
Klingenbergstraße 26
D-32758 Detmold
Germany

www.weidmueller.com

Accessories

Plug housing



The RockStar® HighPower housings are manufactured from high-strength die-cast aluminium and offer perfect protection against harsh environmental conditions thanks to continual optimisation. The multi-part housing gives users the opportunity to examine work processes down to the last step in the workflow.

General ordering data

Type	HDC IP68 HP 24B TO	Version	
Order No.	1079930000	HDC enclosures, Installation size: 8, Protection degree: IP68, IP69,	
GTIN (EAN)	4032248842032	in plugged condition, Plug housing, Clamping yoke connection,	
Qty.	1 ST	Standard	