

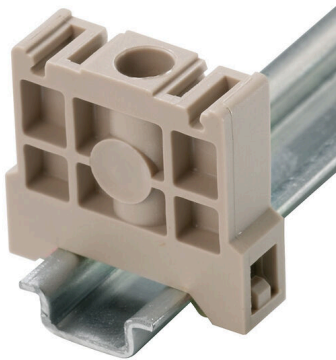
**EW 15/2****Weidmüller Interface GmbH & Co. KG**

Klingenbergstraße 26

D-32758 Detmold

Germany

www.weidmueller.com

**Product image**

Weidmüller's range of products includes end brackets that guarantee a permanent, reliable mounting on the terminal rail and prevent sliding. Versions with and without screws are available. The end brackets include marking options, also for group markers, and also a test plug holder.

**General ordering data**

Version	End bracket, dark beige, TS 15, HB, Plastic, Width: 8 mm, 100 °C
Order No.	<a href="#">1071900000</a>
Type	EW 15/2
GTIN (EAN)	4008190462949
Qty.	50 items

## EW 15/2

**Weidmüller Interface GmbH & Co. KG**  
 Klingenbergstraße 26  
 D-32758 Detmold  
 Germany

www.weidmueller.com

## Technical data

### Approvals

ROHS	Conform
------	---------

### Dimensions and weights

Depth	25 mm	Depth (inches)	0.9842 inch
Height	27 mm	Height (inches)	1.063 inch
Width	8 mm	Width (inches)	0.315 inch
Net weight	5.2 g		

### Temperatures

Ambient temperature	-5 °C...40 °C	Continuous operating temp., min.	-50 °C
Continuous operating temp., max.	100 °C		

### Environmental Product Compliance

RoHS Compliance Status	Compliant without exemption
REACH SVHC	No SVHC above 0.1 wt%

### Material data

Basic material	Plastic	Colour	dark beige
UL 94 flammability rating	HB		

### System specifications

Version	For the terminals	Mounting rail	TS 15
---------	-------------------	---------------	-------

### Additional technical data

Type of mounting	Direct mounting	Locking	for screw fixing
------------------	-----------------	---------	------------------

### Conductors for clamping (rated connection)

Tightening torque, min.	0.5 Nm	Blade size	0.6 x 3.5 mm
-------------------------	--------	------------	--------------

### Dimensions

TS 15 offset	13.5 mm
--------------	---------

### General

Mounting rail	TS 15
---------------	-------

### Classifications

ETIM 8.0	EC001041	ETIM 9.0	EC001041
ETIM 10.0	EC001041	ECLASS 14.0	27-25-03-02
ECLASS 15.0	27-25-03-02		