

## CH20M22 S PSCSC BL 2013

**Weidmüller Interface GmbH & Co. KG**  
 Klingenbergstraße 26  
 D-32758 Detmold  
 Germany

www.weidmueller.com

### Product image



The side element of the CH20M housing offers you the option of an individual structure that can be flexibly adapted to your needs. A particularly practical advantage is that slots that are not required can simply be closed with covers. This not only ensures a clean and tidy appearance, but also protects against dust and other environmental influences. Take advantage of the versatility of the CH20M housing to design your projects efficiently and according to your ideas!

### General ordering data

Version	Side element, OMNIMATE Housing - series CH20M light blue, Side element, Width: 22.5 mm
Order No.	<a href="#">1070620000</a>
Type	CH20M22 S PSCSC BL 2013
GTIN (EAN)	4032248826810
Qty.	10 items

## CH20M22 S PSCSC BL 2013

**Weidmüller Interface GmbH & Co. KG**  
 Klingenbergstraße 26  
 D-32758 Detmold  
 Germany

www.weidmueller.com

## Technical data

### Approvals

ROHS	Conform
------	---------

### Dimensions and weights

Depth	105.5 mm	Depth (inches)	4.1535 inch
Height	22.8 mm	Height (inches)	0.8976 inch
Width	22.5 mm	Width (inches)	0.8858 inch
Net weight	9.3 g		

### Temperatures

Ambient temperature	-25 °C...85 °C	Operating temperature range	-40...120 °C
Humidity	5 - 93% rel. humidity, Tu = 40°C, no condensation		

### Environmental Product Compliance

RoHS Compliance Status	Compliant without exemption
REACH SVHC	No SVHC above 0.1 wt%

### Material data

UL 94 flammability rating	V-0	Insulating material	PA 66 GF 30
Insulating material group	I	Surface finish	untreated
Basic material	Plastic	Comparative Tracking Index (CTI)	600 ≤ CTI

### General data

Colour	light blue	Protection degree	IP20 in installed state
Colour chart (similar)	RAL 5012	Information regarding whole assembly, see referenced articles	<a href="#">CH20M22 B BK/OR 2010</a>
Encapsulation option	No		

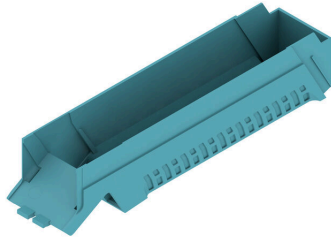
### Component properties

Cut out as preparation for functional portNo integrated		Number of poles, max.	4
Number of ventilation openings	2	Number of slots for female plugs	1
Number of connection levels	1		

### Classifications

ETIM 8.0	EC001031	ETIM 9.0	EC001031
ETIM 10.0	EC001031	ECLASS 14.0	27-19-06-02
ECLASS 15.0	27-19-06-02		

Product image



Product image



Dimensioned drawing

