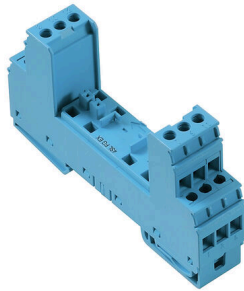


## VSPC BASE 1CL PW FG EX

**Weidmüller Interface GmbH & Co. KG**  
 Klingenbergstraße 26  
 D-32758 Detmold  
 Germany

www.weidmueller.com



Base element for the pluggable VSPC arresters. Integrated PE foot in the base of the impedance-neutral VSPC BASE and floating earth PE connection (FG) via integrated sparkover gap, safely discharges up to 20 kA (8/20  $\mu$ s) and 2.5 kA (10/350  $\mu$ s) to PE. Suitable for unearthed signal circuits.

### General ordering data

|            |  |
|------------|--|
| Version    | Surge protection, Flange-mounted housing, Flange-mounted housing |
| Order No.  | <a href="#">1070470000</a>                                       |
| Type       | VSPC BASE 1CL PW FG EX   |
| GTIN (EAN) | 4032248826384  |
| Qty.       | 1 items  |

## VSPC BASE 1CL PW FG EX

Weidmüller Interface GmbH &amp; Co. KG

Klingenbergstraße 26

D-32758 Detmold

Germany

www.weidmueller.com

## Technical data

## Approvals

Approvals



ROHS Conform

## Dimensions and weights

|            |         |                 |             |
|------------|---------|-----------------|-------------|
| Depth      | 69 mm   | Depth (inches)  | 2.7165 inch |
| Height     | 90 mm   | Height (inches) | 3.5433 inch |
| Width      | 17.8 mm | Width (inches)  | 0.7008 inch |
| Net weight | 75 g    |                 |             |

## Temperatures

|                     |                |                       |                |
|---------------------|----------------|-----------------------|----------------|
| Storage temperature | -40 °C...80 °C | Operating temperature | -40 °C...70 °C |
| Humidity            | 5...96 %       |                       |                |

## Environmental Product Compliance

|                        |                             |
|------------------------|-----------------------------|
| RoHS Compliance Status | Compliant without exemption |
| REACH SVHC             | No SVHC above 0.1 wt%       |

## Protection Ex - Data

|                        |  |                              |  |
|------------------------|--|------------------------------|--|
| ATEX - dust labelling  | II 1 D Ex ia IIIC T135 °C ...<br>T85 °C Da | ATEX - gas labelling         | II 1 G Ex ia IIC T4... T6 Ga               |
| Certificate No. (ATEX) | KEMA10ATEX0148X                            | IECEx - dust labelling       | II 1 D Ex ia IIIC T135 °C ...<br>T85 °C Da |
| IECEx - gas labelling  | II 1 G Ex ia IIC T4... T6 Ga               | Internal inductance, max. LI | 0 µH                                       |

## CSA protection data

|                              |        |                            |      |
|------------------------------|--------|----------------------------|------|
| Gas group D                  | IIA    | Gas groups A, B            | IIC  |
| Input-current, max. II       | 350 mA | Gas group C                | IIB  |
| Internal inductance, max. LI | 0 µH   | Internal capacity, max. CI | 0 nF |

## General data

|                           |                        |               |                                       |
|---------------------------|------------------------|---------------|---------------------------------------|
| Optical function display  | No                     | Segment       | Measurement - Monitoring<br>- Setting |
| Version                   | Flange-mounted housing | Design        | Terminal, miscellaneous               |
| UL 94 flammability rating | V-0                    | Colour        | Light Blue                            |
| Protection degree         | IP20                   | Mounting rail | TS 35, TS 35 x 7.5                    |

## Insulation coordination acc. to EN 50178

|                        |     |                    |   |
|------------------------|-----|--------------------|---|
| Surge voltage category | III | Pollution severity | 2 |
|------------------------|-----|--------------------|---|

## Rated data IEC / EN

|                       |       |                    |   |
|-----------------------|-------|--------------------|---|
| Leakage current at Un | 0 µA  | Signalling contact | No  |
| Voltage type          | AC/DC | Standards          | IEC 61643-21, IEC 62305,<br>DIN EN 60079-0:2009,<br>DIN EN 60079-11:2007, |

## VSPC BASE 1CL PW FG EX

Weidmüller Interface GmbH &amp; Co. KG

Klingenbergstraße 26

D-32758 Detmold

Germany

www.weidmueller.com

DIN EN 60079-26:2007,  
DIN EN 61241-11:2006

Dielectric strength at FG against PE ≥ 500 V

## Further details of approvals

|                  |  |
|------------------|--|
| GOST certificate | GOST-Zertifikat -<br>PDF/7950_n1-n4.pdf<br>(application/pdf) |
|------------------|--|

## Connection data

|  |                     |  |                     |
|--|---------------------|--|---------------------|
| Stripping length   | 7 mm                | Type of connection   | Screw connection    |
| Stripping length, rated connection                         | 7 mm                | Tightening torque, min.                                    | 0.5 Nm              |
| Tightening torque, max.                                    | 0.8 Nm              | Clamping range, min.                                       | 0.5 mm <sup>2</sup> |
| Clamping range, max.                                       | 4 mm <sup>2</sup>   | Wire cross-section, solid, min.                            | 0.5 mm <sup>2</sup> |
| Wire cross-section, solid, max.                            | 4 mm <sup>2</sup>   | Wire connection cross section, finely stranded, max.       | 2.5 mm <sup>2</sup> |
| Conductor cross-section, flexible, AEH (DIN 46228-1), min. | 0.5 mm <sup>2</sup> | Conductor cross-section, flexible, AEH (DIN 46228-1), max. | 2.5 mm <sup>2</sup> |
| Connection cross-section, stranded, min.                   | 0.5 mm <sup>2</sup> | Connection cross-section, stranded, max.                   | 2.5 mm <sup>2</sup> |
| Blade size   | 0.6 x 3.5 mm        |  |                     |

## Electrical data

|              |       |
|--------------|-------|
| Voltage type | AC/DC |
|--------------|-------|

## General data

|                   |      |        |            |
|-------------------|------|--------|------------|
| Protection degree | IP20 | Colour | Light Blue |
|-------------------|------|--------|------------|

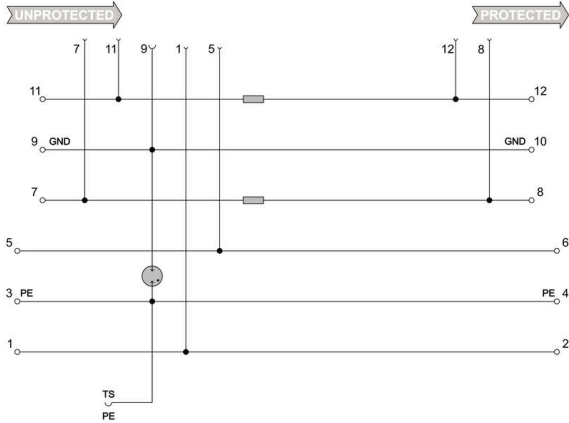
## Ratings IECEx/ATEX/cUL

|                       |   |                        |  |
|-----------------------|---|------------------------|--|
| ATEX - dust labelling | II 1 D Ex ia IIIC T135 °C ...<br>T85 °C Da                              | ATEX - gas labelling   | II 1 G Ex ia IIC T4... T6 Ga                             |
| ATEX certificate      | ATEX Certificate  | Certificate No. (ATEX) | KEMA10ATEX0148X  |
| IEC Ex certificate    | IECEX Zertifikat - PDF/<br>IECEXCertificateDEK.pdf<br>(application/pdf) | IECEX - dust labelling | II 1 D Ex ia IIIC T135 °C ...<br>T85 °C Da               |
| IECEX - gas labelling | II 1 G Ex ia IIC T4... T6 Ga  | cUL certificate        | cUL Certificate - pdf/<br>VSPC.PDF (application/<br>pdf) |

## Classifications

|             |             |             |             |
|-------------|-------------|-------------|-------------|
| ETIM 8.0    | EC000943    | ETIM 9.0    | EC000943    |
| ETIM 10.0   | EC000943    | ECLASS 14.0 | 27-17-15-02 |
| ECLASS 15.0 | 27-17-15-02 |             |             |

Electric symbol



Circuit diagram

| Cate- gory | Testing pulse     | Surge voltage             | Surge current              | Pulse | Type  |
|------------|-------------------|---------------------------|----------------------------|-------|---|
| C1         | Quick-rising edge | 0.5 - 2 kV with 1.2/50 µs | 0.25 - 1 kA mit 8/20 µs    | 300   | Surge voltage arrester                            |
| C2         | Quick-rising edge | 2 - 10 kV with 1.2/50 µs  | 1 - 5 kA mit 8/20 µs       | 10    | Surge voltage arrester                            |
| C3         | Quick-rising edge | ≥ 1 kV with 1 kV/µs       | 10 - 100 A mit 10/10000 µs | 300   | Surge voltage arrester                            |
| D1         | High power        | ≥ 1 kV                    | 0.5 - 2.5 kA mit 10/350 µs | 2     | Arrester for lightning current and surge voltages |

Discharge capacity

## VSPC BASE 1CL PW FG EX

**Weidmüller Interface GmbH & Co. KG**

Klingenbergstraße 26  
D-32758 Detmold  
Germany

[www.weidmueller.com](http://www.weidmueller.com)

## Accessories

### Earthing module



- Can be applied to unassigned wires
- Can be used during initial commissioning and maintenance
- All sensor cables connected to the VSPC are earthed.
- Can be plugged into all VSPC base sockets

### General ordering data

|            |                            |  |  |
|------------|----------------------------|--|--|
| Type       | VSPC GROUND                | Version  |  |
| Order No.  | <a href="#">8924680000</a> | Adapter, without warning function / function indicator |  |
| GTIN (EAN) | 4032248696321              |  |  |
| Qty.       | 1 ST                       |  |  |

### Slotted screwdriver

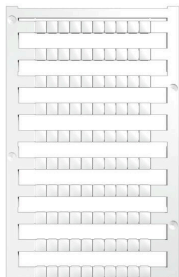


Slotted screwdriver with rounded blade SD DIN 5265, ISO 2380/2, output to DIN 5264, ISO 2380/1. ChromTop tip, SoftFinish grip

### General ordering data

|            |                            |                          |  |
|------------|----------------------------|--------------------------|--|
| Type       | SDS 0.6X3.5X200            | Version                  |  |
| Order No.  | <a href="#">9010110000</a> | Screwdriver, Screwdriver |  |
| GTIN (EAN) | 4032248300754              |                          |  |
| Qty.       | 1 ST                       |                          |  |

### Plus



The Dekafix (DEK) marker is the universal marker for all conductor and plug-in connectors as well as for electronic sub-assemblies. The system is ideal for short number sequences and covers a wide range of ready-printed markers.

Strips for fast installation in only one work step. The printing is easy to read, rich in contrast and available in various widths.

- Large range of ready-to-use markers
  - Strips for fast installation
  - Terminal markers, suitable for all Weidmüller cable connectors
  - Available as blank MultiCard or with standard printing
- For custom printing: Please send us a file of our labeling software M-Print PRO or M-Print PRO Online (without installation) for your labeling specifications.

## VSPC BASE 1CL PW FG EX

**Weidmüller Interface GmbH & Co. KG**  
Klingenbergstraße 26  
D-32758 Detmold  
Germany

[www.weidmueller.com](http://www.weidmueller.com)

## Accessories

### General ordering data

|            |                            |   |
|------------|----------------------------|---|
| Type       | DEK 5/5 PLUS MC NE WS      | Version   |
| Order No.  | <a href="#">1854490000</a> | Dekafix, Terminal marker, 5 x 5 mm, Pitch in mm (P): 5.00 |
| GTIN (EAN) | 4032248393596              | Weidmueller, white  |
| Qty.       | 1000 ST                    |   |