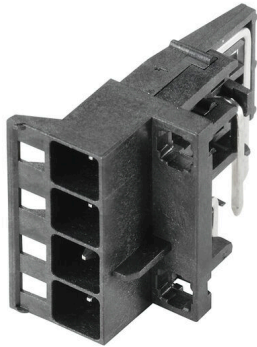


SHL-SMT 5.00/04GL 5.9RL

Weidmüller Interface GmbH & Co. KG
 Klingenbergstraße 26
 D-32758 Detmold
 Germany

www.weidmueller.com

Product image



Male connectors with solder pin length optimised for wave flow soldering. The pin headers provide space for labelling and can be coded.

General ordering data

| | |
|--------------|--|
| Version | PCB plug-in connector, Connection element, left, male header, open side, THT/THR solder connection, 5.00 mm, Number of poles: 4, 90°, Solder pin length (l): 5.9 mm, tinned, black, Tape |
| Order No. | 1069810000 |
| Type | SHL-SMT 5.00/04GL 5.9RL |
| GTIN (EAN) | 4032248824694 |
| Qty. | 130 items |
| Product data | IEC: 400 V UL: 300 V / 9 A / AWG 26 - AWG 12 |
| Packaging | Tape |

SHL-SMT 5.00/04GL 5.9RL

Weidmüller Interface GmbH & Co. KG

Klingenbergstraße 26

D-32758 Detmold

Germany

www.weidmueller.com

Technical data

Approvals

Approvals



ROHS Conform

UL File Number Search [UL Website](#)

Certificate No. (cURus) E60693

Dimensions and weights

| | | | |
|--------------------------|------------|-----------------|-------------|
| Depth | 27.8 mm | Depth (inches) | 1.0945 inch |
| Height | 14.4 mm | Height (inches) | 0.5669 inch |
| Height of lowest version | 16.3 mm | Width | 20.6 mm |
| Width (inches) | 0.811 inch | Length | 0 mm |
| Net weight | 6.62 g | | |

Environmental Product Compliance

RoHS Compliance Status Compliant without exemption

REACH SVHC No SVHC above 0.1 wt%

System Parameters

| | | | |
|---------------------|---------------------------------|---------------------|------------------|
| Product family | OMNIMATE Housing - series CH20M | Type of connection | Board connection |
| Pitch in mm (P) | 5.00 mm | Pitch in inches (P) | 0.197 " |
| Number of poles | 4 | L1 in mm | 15.00 mm |
| L1 in inches | 0.591 " | Number of rows | 1 |
| Pin series quantity | 1 | Protection degree | IP20 |
| Volume resistance | ≤5 mΩ | Can be coded | Yes |

Material data

| | | | |
|---------------------------------------|----------------|---------------------------------------|--------------|
| Insulating material | LCP | Colour | black |
| Colour chart (similar) | RAL 9011 | Insulating material group | IIIa |
| Comparative Tracking Index (CTI) | 175 ≤ CTI <400 | Moisture Level (MSL) | 1 |
| UL 94 flammability rating | V-0 | Contact material | Copper alloy |
| Contact surface | tinned | Storage temperature, min. | -40 °C |
| Storage temperature, max. | 70 °C | Operating temperature, min. | -40 °C |
| Operating temperature, max. | 120 °C | Temperature range, installation, min. | -30 °C |
| Temperature range, installation, max. | 120 °C | | |

Rated data acc. to IEC

| | | | |
|---|------------------------|---|-------|
| tested acc. to standard | IEC 60664-1, IEC 61984 | Rated current, max. number of poles (Tu=20°C) | 10 A |
| Rated current, max. number of poles (Tu=40°C) | 9 A | Rated voltage for surge voltage class / pollution degree II/2 | 400 V |
| Rated voltage for surge voltage class / pollution degree III/2 | 320 V | Rated voltage for surge voltage class / pollution degree III/3 | 250 V |
| Rated impulse voltage for surge voltage class/ pollution degree II/2 | 4 kV | Rated impulse voltage for surge voltage class/ pollution degree III/2 | 4 kV |
| Rated impulse voltage for surge voltage class/ contamination degree III/3 | 4 kV | | |

SHL-SMT 5.00/04GL 5.9RL

Weidmüller Interface GmbH & Co. KG

Klingenbergstraße 26

D-32758 Detmold

Germany

www.weidmueller.com

Technical data

Rated data acc. to CSA

| | | | |
|-----------------------------------|--|-----------------------------------|-----------------|
| Institute (CSA) | CSA | Certificate No. (CSA) | 200039-70153051 |
| Rated voltage (Use group B / CSA) | 300 V | Rated voltage (Use group C / CSA) | 50 V |
| Rated voltage (Use group D / CSA) | 300 V | Rated current (Use group B / CSA) | 9 A |
| Rated current (Use group C / CSA) | 9 A | Rated current (Use group D / CSA) | 9 A |
| Wire cross-section, AWG, min. | AWG 26 | Wire cross-section, AWG, max. | AWG 12 |
| Reference to approval values | Specifications are maximum values, details - see approval certificate. | | |

Rated data acc. to UL 1059

| | | | |
|---------------------------------------|--|---------------------------------------|--------|
| Institute (cURus) | CURUS | Certificate No. (cURus) | E60693 |
| Rated voltage (Use group B / UL 1059) | 300 V | Rated voltage (Use group C / UL 1059) | 50 V |
| Rated voltage (Use group D / UL 1059) | 300 V | Rated current (Use group B / UL 1059) | 9 A |
| Rated current (Use group C / UL 1059) | 9 A | Rated current (Use group D / UL 1059) | 9 A |
| Wire cross-section, AWG, min. | AWG 26 | Wire cross-section, AWG, max. | AWG 12 |
| Reference to approval values | Specifications are maximum values, details - see approval certificate. | | |

Material data

| | | | |
|---------------------------|------|----------------------------------|----------------|
| UL 94 flammability rating | V-0 | Insulating material | LCP |
| Insulating material group | IIIa | Comparative Tracking Index (CTI) | 175 ≤ CTI <400 |

General data

| | | | |
|------------------------|----------|----------------------|------|
| Colour | black | Protection degree | IP20 |
| Colour chart (similar) | RAL 9011 | Encapsulation option | No |

Important note

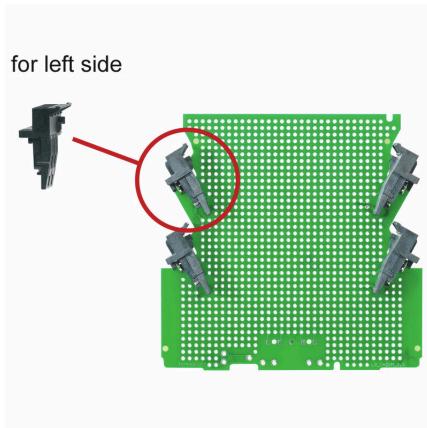
| | |
|----------------|--|
| IPC conformity | Conformity: The products are developed, manufactured and delivered according international recognized standards and norms and comply with the assured properties in the data sheet resp. fulfill decorative properties in accordance with IPC-A-610 "Class 2". Further claims on the products can be evaluated on request. |
|----------------|--|

Classifications

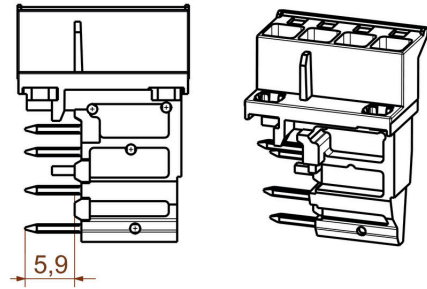
| | | | |
|-------------|-------------|-------------|-------------|
| ETIM 8.0 | EC002637 | ETIM 9.0 | EC002637 |
| ETIM 10.0 | EC002637 | ECLASS 14.0 | 27-46-02-01 |
| ECLASS 15.0 | 27-46-02-01 | | |

Drawings

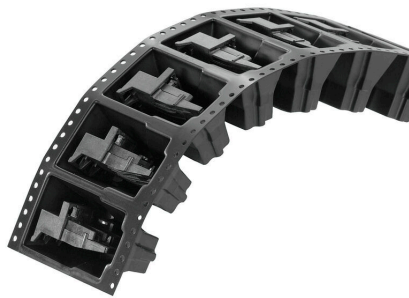
Example of use



Dimensioned drawing



Example of use



delivery

Example of use



delivery

SHL-SMT 5.00/04GL 5.9RL

Weidmüller Interface GmbH & Co. KG
 Klingenbergstraße 26
 D-32758 Detmold
 Germany

www.weidmueller.com

Counterpart

Female plugs - Clamping yoke screw connection



The optimum framework for function and innovation: The connection technology for the modular CH20M housing offers you numerous advantages that can make your projects more efficient. With our PCB terminal blocks and connectors, you benefit from flexible and reliable connection technology.

Thanks to automated production processes such as THT and THR soldering and reel packaging, we can guarantee high quality and precision. This enables fast and uncomplicated integration into your systems. In addition, we offer you a wide range of colors as well as various coding and printing options to customize your housings. This allows you to ensure that your products are not only functional, but also visually appealing.

General ordering data

| | | |
|------------|----------------------------|--|
| Type | BHZ 5.00/04/90LH GGY/GGY | Version |
| Order No. | 1372520000 | PCB plug-in connector, female plug, 5.00 mm, Number of poles: 4, |
| GTIN (EAN) | 4050118174229 | 90°, Clamping yoke connection, BHZ 5.00/04/90LH SN GGY/GGY |
| Qty. | 78 ST | BX cod. 02, Box |
| Type | BHZ 5.00/04/90LH GGY/BL | Version |
| Order No. | 1372580000 | PCB plug-in connector, female plug, 5.00 mm, Number of poles: 4, |
| GTIN (EAN) | 4050118174625 | 90°, Clamping yoke connection, BHZ 5.00/04/90LH SN GGY/BL BX |
| Qty. | 78 ST | cod. 02, Box |
| Type | BHZ 5.00/04/90LH BK/OR | Version |
| Order No. | 1063280000 | PCB plug-in connector, female plug, 5.00 mm, Number of poles: 4, |
| GTIN (EAN) | 4032248814947 | 90°, Clamping yoke connection, cod. 02, Box |
| Qty. | 78 ST | |
| Type | BHZ 5.00/04/90LH BK/GGY | Version |
| Order No. | 1421750000 | PCB plug-in connector, female plug, 5.00 mm, Number of poles: 4, |
| GTIN (EAN) | 4050118225518 | 90°, Clamping yoke connection, BHZ 5.00/04/90LH SN BK/GGY BX |
| Qty. | 78 ST | cod. 02, Box |
| Type | BHZ 5.00/04/90LH BK/BL | Version |
| Order No. | 1069380000 | PCB plug-in connector, female plug, 5.00 mm, Number of poles: 4, |
| GTIN (EAN) | 4032248825028 | 90°, Clamping yoke connection, cod. 02, Box |
| Qty. | 78 ST | |
| Type | BHZ 5.00/04/90LH BK/BK | Version |
| Order No. | 1069350000 | PCB plug-in connector, female plug, 5.00 mm, Number of poles: 4, |
| GTIN (EAN) | 4032248825011 | 90°, Clamping yoke connection, cod. 02, Box |
| Qty. | 78 ST | |

SHL-SMT 5.00/04GL 5.9RL

Weidmüller Interface GmbH & Co. KG
 Klingenbergstraße 26
 D-32758 Detmold
 Germany

Counterpart

www.weidmueller.com

Female plugs - PUSH IN spring connection



The optimum framework for function and innovation: The connection technology for the modular CH20M housing offers you numerous advantages that can make your projects more efficient. With our PCB terminal blocks and connectors, you benefit from flexible and reliable connection technology.

Thanks to automated production processes such as THT and THR soldering and reel packaging, we can guarantee high quality and precision. This enables fast and uncomplicated integration into your systems. In addition, we offer you a wide range of colors as well as various coding and printing options to customize your housings. This allows you to ensure that your products are not only functional, but also visually appealing.

General ordering data

| | | |
|------------|----------------------------|--|
| Type | BHF 5.00/04/180LH BK/RD | Version |
| Order No. | 2555620000 | PCB plug-in connector, female plug, 5.00 mm, Number of poles: 4, |
| GTIN (EAN) | 4050118565683 | 180°, PUSH IN with actuator, Box |
| Qty. | 78 ST | |
| Type | BHF 5.00/04/180LH BK/OR | Version |
| Order No. | 1989190000 | PCB plug-in connector, female plug, 5.00 mm, Number of poles: 4, |
| GTIN (EAN) | 4050118373820 | 180°, PUSH IN with actuator, Box |
| Qty. | 78 ST | |
| Type | BHF 5.00/04/180LH BK/BL | Version |
| Order No. | 1989090000 | PCB plug-in connector, female plug, 5.00 mm, Number of poles: 4, |
| GTIN (EAN) | 4050118533453 | 180°, PUSH IN with actuator, Box |
| Qty. | 78 ST | |
| Type | BHF 5.00/04/180LH BK/BK | Version |
| Order No. | 1497500000 | PCB plug-in connector, female plug, 5.00 mm, Number of poles: 4, |
| GTIN (EAN) | 4050118306828 | 180°, PUSH IN with actuator, Box |
| Qty. | 78 ST | |