

## BG GHDE PT6



The FieldPower® housings are highly robust and meet the highest UL flammability class 5 VA.

- The "TS 35 PT6" mounting rail module and PT6 contact unit are easy to snap on.
- Hinged seals allow pre-assembled plug cables to also be used.
- The high cover versions enable the device to be installed.

For cable seals consult accessories.

### General ordering data

Version	FieldPower® enclosures, 181 mm, 104 mm, 25 mm, IP65, in complete state, glass-fibre reinforced polycarbonate, black
Order No.	<a href="#">1068890000</a>
Type	BG GHDE PT6
GTIN (EAN)	4032248824120
Qty.	10 items

**Technical data**

**Approvals**

Approvals



ROHS	Conform
UL File Number Search	<a href="#">UL Website</a>
Certificate No. (UL)	E256877

**Dimensions and weights**

Depth	25 mm	Depth (inches)	0.9842 inch
Height	181 mm	Height (inches)	7.126 inch
Width	104 mm	Width (inches)	4.0945 inch
Net weight	155 g		

**Temperatures**

Storage temperature	-40 °C...85 °C	Operating temperature	-40 °C...85 °C
---------------------	----------------	-----------------------	----------------

**Environmental Product Compliance**

RoHS Compliance Status	Compliant without exemption
REACH SVHC	Potassium perfluorobutane sulfonate 29420-49-3
SCIP	5f19cd84-8946-4797-9386-3ac323b95c10

**General data**

Basic material	Polycarbonate, GRP	Insulating material	GF 10
Enclosure material	glass-fibre reinforced polycarbonate	Silicone	No
Colour	black	Protection degree	IP65, in complete state
UL 94 flammability rating	5VA	Torque for lid screws	2 Nm
Lid attachment	TX20 screws	lockable	No
Type of mounting	Screw mounting, Fixing lugs	Installation advice	Lid screws included

**Classifications**

ETIM 8.0	EC000261	ETIM 9.0	EC000261
ETIM 10.0	EC000261	ECLASS 14.0	27-18-01-01
ECLASS 15.0	27-18-01-01		

Drawings

Drilling template



## BG GHDE PT6

**Weidmüller Interface GmbH & Co. KG**

Klingenbergstraße 26  
D-32758 Detmold  
Germany

[www.weidmueller.com](http://www.weidmueller.com)

## Accessories

### DMS PRO



Weidmüller torque screwdrivers have an ergonomic design and are therefore ideal for use with one hand. They can be used without causing fatigue in all installation positions. Apart from that, they incorporate an automatic torque limiter and have a good reproducibility accuracy.

#### General ordering data

Type	DMS PRO	Version	
Order No.	<a href="#">1479120000</a>	Mounting tool	
GTIN (EAN)	4050118287011		
Qty.	1 ST		

### Bits E6,3 - Torx®



The Weidmüller bits are standard bits which are highly popular with users thanks to their good quality, large range and efficiency. The computer-controlled hardening method enables Weidmüller to guarantee a consistently high standard of quality.

The high-quality raw materials used make it possible to reach torques far higher than any of those specified in the relevant DIN standards:

- DIN 5261 for PH/PZ bits,
- DIN 5263 for slotted bits,
- Camcar standard for TORX bits

That means a long life at high torques and hence ideal conditions for standard situations.

The benefits:

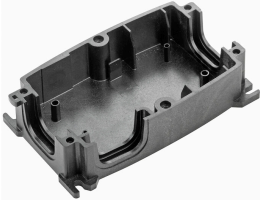
- Suitable for all types of screws. Because of their excellent hardness values of 59-61 HRC, they are suitable for use with both manual and power tools.
- Good wearing resistance and thus a long life expectancy.
- Optimum fit in all DIN screws means low wear and optimum torque transmission.
- Manufactured to meet professional quality criteria according to relevant ISO standards with a consistently high standard of quality.

#### General ordering data

Type	BIT E6,3 T20 X 70	Version	
Order No.	<a href="#">2749010000</a>	Screwdriver insert	
GTIN (EAN)	4050118895308		
Qty.	5 ST		

## Accessories

### Size 1



The FieldPower® housings are highly robust and meet the highest UL flammability class 5 VA.

- The "TS 35 PT6" mounting rail module and PT6 contact unit are easy to snap on.
- Hinged seals allow pre-assembled plug cables to also be used.
- The high cover versions enable the device to be installed.

For cable seals consult accessories.

### General ordering data

Type	GH PT6	Version	
Order No.	<a href="#">1070140000</a>	FieldPower® enclosures, 181 mm, 104 mm, 42 mm, IP65, in	
GTIN (EAN)	4032248825813	complete state, glass-fibre reinforced polycarbonate, black	
Qty.	10 ST		