

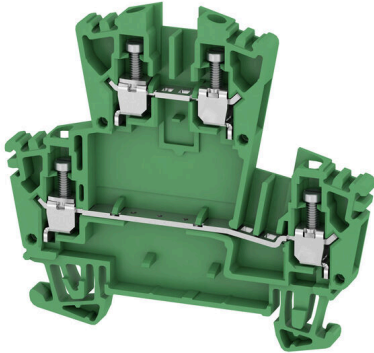
WDK 2.5 ZQV GN**Weidmüller Interface GmbH & Co. KG**

Klingenbergstraße 26

D-32758 Detmold

Germany

www.weidmueller.com

Product image

To feed through power, signal, and data is the classical requirement in electrical engineering and panel building. The insulating material, the connection system and the design of the terminal blocks are the differentiating features. A feed-through terminal block is suitable for joining and/or connecting one or more conductors. They could have one or more connection levels that are on the same potential or insulated against one another.

General ordering data

| | |
|------------|--|
| Version | Multi-tier modular terminal, Screw connection, green, 2.5 mm ² , 400 V, Number of connections: 4, Number of levels: 2, TS 35, V-0 |
| Order No. | 1067960000 |
| Type | WDK 2.5 ZQV GN |
| GTIN (EAN) | 4032248822119 |
| Qty. | 100 items |

WDK 2.5 ZQV GN

Weidmüller Interface GmbH & Co. KG
Klingenbergstraße 26
D-32758 Detmold
Germany

www.weidmueller.com

Technical data

Approvals

Approvals



| | |
|-----------------------|----------------------------|
| ROHS | Conform |
| UL File Number Search | UL Website |
| Certificate No. (UR) | E60693 |

Dimensions and weights

| | | | |
|--------------------------|-------------|----------------|-------------|
| Depth | 62.5 mm | Depth (inches) | 2.4606 inch |
| Depth including DIN rail | 63 mm | Height | 69.5 mm |
| Height (inches) | 2.7362 inch | Width | 5.1 mm |
| Width (inches) | 0.2008 inch | Net weight | 11.04 g |

Temperatures

| | | | |
|----------------------------------|----------------|----------------------------------|----------------|
| Storage temperature | -25 °C...55 °C | Ambient temperature | -60 °C...85 °C |
| Continuous operating temp., min. | -60 °C | Continuous operating temp., max. | 130 °C |

Environmental Product Compliance

| | |
|------------------------|-----------------------------|
| RoHS Compliance Status | Compliant without exemption |
| REACH SVHC | No SVHC above 0.1 wt% |

Material data

| | | | |
|---------------------------|-------|--------|-------|
| Basic material | Wemid | Colour | green |
| UL 94 flammability rating | V-0 | | |

Rating data IECEX/ATEX

| | | | |
|--------------------------------|-------------------|---------------------------------|-------------------|
| Certificate No. (ATEX) | DEMKO15ATEX1346U | Certificate No. (IECEX) | IECEXULD15.0003U |
| Max. voltage (ATEX) | 275 V | Current (ATEX) | 21 A |
| Wire cross section max. (ATEX) | 4 mm ² | Max. voltage (IECEX) | 275 V |
| Current (IECEX) | 21 A | Wire cross section max. (IECEX) | 4 mm ² |
| Marking EN 60079-7 | Ex eb II C Gb | Ex 2014/34/EU label | II 2 G D |

System specifications

| | | | |
|-------------------------------------|--|-------------------------------|-----|
| Version | Screw connection, for plug-in cross-connector, One end without connector | End cover plate required | Yes |
| Number of potentials | 2 | Number of levels | 2 |
| Number of clamping points per level | 2 | Number of potentials per tier | 1 |
| Levels cross-connected internally | No | PE connection | No |
| Mounting rail | TS 35 | N-function | No |
| PE function | No | PEN function | No |

WDK 2.5 ZQV GN

Weidmüller Interface GmbH & Co. KG

Klingenbergstraße 26

D-32758 Detmold

Germany

www.weidmueller.com

Technical data

2 clampable conductors (H05V/H07V) with equal cross-section (rated connection)

| | | | |
|--|---------------------|--|---------------------|
| Wire connection cross section, finely stranded with wire-end ferrules DIN 46228/1, 2 clampable wires, max. | 1.5 mm ² | Wire connection cross section, finely stranded with wire-end ferrules DIN 46228/1, 2 clampable wires, min. | 0.5 mm ² |
| Wire cross-section, finely stranded, two clampable wires, max. | 1.5 mm ² | Wire connection cross section, finely stranded, two clampable wires, min. | 0.5 mm ² |

Additional technical data

| | | | |
|--------------------------|-------|-----------------------------|---------|
| Open sides | right | Number of similar terminals | 1 |
| Explosion-tested version | Yes | Type of mounting | Snap-on |

CSA rating data

| | | | |
|-------------------------------|--------|-----------------------|-----------|
| Wire cross section max. (CSA) | 12 AWG | Voltage size C (CSA) | 300 V |
| Current size C (CSA) | 25 A | Certificate No. (CSA) | 12400-391 |
| Wire cross section min. (CSA) | 26 AWG | | |

Conductors for clamping (additional connection)

Connection type, additional connection Screw connection

Conductors for clamping (rated connection)

| | | | |
|---|----------------------|---|----------------------|
| Gauge to IEC 60947-1 | A3 | Wire connection cross section AWG, max. | AWG 12 |
| Connection direction | on side | Tightening torque, max. | 0.6 Nm |
| Tightening torque, min. | 0.4 Nm | Stripping length | 10 mm |
| Type of connection 2 | Screw connection | Type of connection | Screw connection |
| Number of connections | 4 | Clamping range, max. | 4 mm ² |
| Clamping range, min. | 0.05 mm ² | Clamping screw | M 2.5 |
| Blade size | 0.6 x 3.5 mm | Wire connection cross section AWG, min. | AWG 30 |
| Wire connection cross-section, finely stranded with wire-end ferrules DIN 46228/4, max. | 2.5 mm ² | Wire connection cross-section, finely stranded with wire-end ferrules DIN 46228/4, min. | 0.05 mm ² |
| Wire connection cross-section, finely stranded with wire-end ferrules DIN 46228/1, max. | 2.5 mm ² | Wire connection cross-section, finely stranded with wire-end ferrules DIN 46228/1, min. | 0.05 mm ² |
| Wire connection cross section, finely stranded, max. | 4 mm ² | Wire connection cross section, finely stranded, min. | 0.05 mm ² |
| Connection cross-section, stranded, max. | 4 mm ² | Connection cross-section, stranded, min. | 0.05 mm ² |
| Torque level with DMS electric screwdriver | 1 | Wire connection cross-section, solid core, max. | 4 mm ² |
| Wire connection cross-section, solid core, min. | 0.05 mm ² | Connection cross-section, finely stranded, min. | 0.05 mm ² |

Dimensions

TS 35 offset 35.5 mm

General

| | | | |
|---|---------------|---|--------|
| Wire connection cross section AWG, max. | AWG 12 | Wire connection cross section AWG, min. | AWG 30 |
| Standards | IEC 60947-7-1 | Mounting rail | TS 35 |

WDK 2.5 ZQV GN

Weidmüller Interface GmbH & Co. KG

Klingenbergstraße 26

D-32758 Detmold

Germany

www.weidmueller.com

Technical data

Rating data

| | | | |
|--|---------------------|---------------------------------|---------------|
| Rated cross-section | 2.5 mm ² | Rated voltage | 400 V |
| Rated DC voltage | 400 V | Nominal current | 24 A |
| Current at maximum wires | 32 A | Standards | IEC 60947-7-1 |
| Volume resistance according to IEC 60947-7-x | 1.33 mΩ | Rated impulse withstand voltage | 6 kV |
| Power loss in accordance with IEC 60947-7-x | 0.77 W | Pollution severity | 3 |

UL rating data

| | | | |
|---|--------|---|--------|
| Voltage size B (UR) | 300 V | Current size B (UR) | 20 A |
| Conductor size Factory wiring max. (UR) | 12 AWG | Current size C (UR) | 20 A |
| Voltage size C (UR) | 300 V | Conductor size Factory wiring min. (UR) | 22 AWG |
| Certificate No. (UR) | E60693 | Conductor size Field wiring min. (UR) | 22 AWG |
| Conductor size Field wiring max. (UR) | 12 AWG | | |

Classifications

| | | | |
|-------------|-------------|-------------|-------------|
| ETIM 8.0 | EC000897 | ETIM 9.0 | EC000897 |
| ETIM 10.0 | EC000897 | ECLASS 14.0 | 27-25-01-02 |
| ECLASS 15.0 | 27-25-01-02 | | |

Drawings

