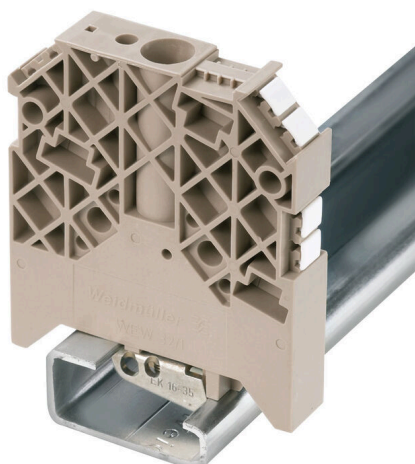


WEW 32/1**Weidmüller Interface GmbH & Co. KG**

Klingenbergstraße 26

D-32758 Detmold

Germany

www.weidmueller.com**Product image**

Weidmüller's range of products includes end brackets that guarantee a permanent, reliable mounting on the terminal rail and prevent sliding. Versions with and without screws are available. The end brackets include marking options, also for group markers, and also a test plug holder.

General ordering data

| | |
|------------|--|
| Version | End bracket, dark beige, TS 32, V-2, PA 66 GF 30, Width: 12 mm, 100 °C |
| Order No. | 1067600000 |
| Type | WEW 32/1 |
| GTIN (EAN) | 4008190099657 |
| Qty. | 50 items |

Technical data

Approvals

| | |
|------|---------|
| ROHS | Conform |
|------|---------|

Dimensions and weights

| | | | |
|------------|--------|-----------------|-------------|
| Depth | 67 mm | Depth (inches) | 2.6378 inch |
| Height | 56 mm | Height (inches) | 2.2047 inch |
| Width | 12 mm | Width (inches) | 0.4724 inch |
| Net weight | 29.3 g | | |

Temperatures

| | | | |
|----------------------------------|---------------|----------------------------------|--------|
| Ambient temperature | -5 °C...40 °C | Continuous operating temp., min. | -50 °C |
| Continuous operating temp., max. | 100 °C | | |

Environmental Product Compliance

| | | | |
|--------------------------|-----------------------------|-----------------|--|
| RoHS Compliance Status | Compliant without exemption | | |
| REACH SVHC | No SVHC above 0.1 wt% | | |
| Product Carbon Footprint | Cradle to gate | 0.236 kg CO2eq. | |

Material data

| | | | |
|---------------------------|-------------|--------|------------|
| Basic material | PA 66 GF 30 | Colour | dark beige |
| UL 94 flammability rating | V-2 | | |

System specifications

| | | | |
|---------|-------------------|---------------|-------|
| Version | For the terminals | Mounting rail | TS 32 |
|---------|-------------------|---------------|-------|

Additional technical data

| | | | |
|---------------------|------------------|------------------|-----------------|
| Installation advice | Direct mounting | Type of mounting | when screwed in |
| Locking | for screw fixing | | |

Dimensions

| | |
|--------------|-------|
| TS 35 offset | 28 mm |
|--------------|-------|

General

| | | | |
|---------------------|-----------------|---------------|-------|
| Installation advice | Direct mounting | Mounting rail | TS 32 |
|---------------------|-----------------|---------------|-------|

Classifications

| | | | |
|-------------|-------------|-------------|-------------|
| ETIM 8.0 | EC001041 | ETIM 9.0 | EC001041 |
| ETIM 10.0 | EC001041 | ECLASS 14.0 | 27-25-03-02 |
| ECLASS 15.0 | 27-25-03-02 | | |

Accessories

Blank



The Dekafix (DEK) marker is the universal marker for all conductor and plug-in connectors as well as for electronic sub-assemblies. The system is ideal for short number sequences and covers a wide range of ready-printed markers.

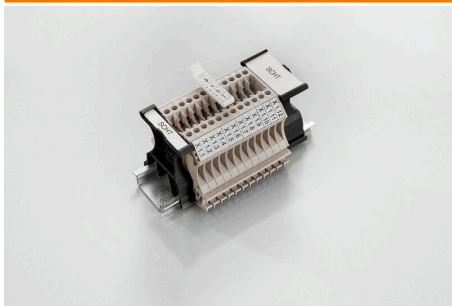
Strips for fast installation in only one work step. The printing is easy to read, rich in contrast and available in various widths.

- Large range of ready-to-use markers
 - Strips for fast installation
 - Terminal markers, suitable for all Weidmüller cable connectors
 - Available as blank MultiCard or with standard printing
- For custom printing: Please send us a file of our labeling software M-Print PRO or M-Print PRO Online (without installation) for your labeling specifications.

General ordering data

| | | |
|------------|----------------------------|---|
| Type | DEK 5/5 MC NE WS | Version |
| Order No. | 1609801044 | Dekafix, Terminal marker, 5 x 5 mm, Pitch in mm (P): 5.00 |
| GTIN (EAN) | 4008190397111 | Weidmueller, white |
| Qty. | 1000 ST | |

SchT group marker carrier



The SchT 5 S group tag carriers are clipped directly onto the TS 32 mounting rail (G-rail) or the TS 35 mounting rail (top-hat rail). It is therefore possible to label the terminal strip irrespective of the terminal and the type of terminal. SchT 5 and SchT 5 S are fitted with ESO 5, STR 5 protective strips.

The SchT 7 is a hinged group tag carrier for inlay tags which enables easy access to the clamping screw. The SchT 7 is fitted with ESO 7, STR 7 protective strips or DEK 5.

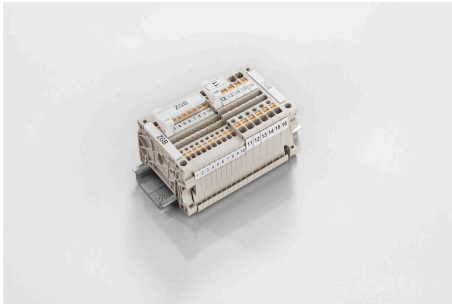
Inlay tags and protective strips can be found under "Accessories".

General ordering data

| | | |
|------------|----------------------------|---|
| Type | SCHT 7 | Version |
| Order No. | 0517960000 | SCHT, Terminal marker, 39.3 x 8 mm, Pitch in mm (P): 7.00 |
| GTIN (EAN) | 4008190001742 | Weidmueller, white |
| Qty. | 20 ST | |

Accessories

ZGB pivotable group tag holder



The ZGB 15 is a hinged group tag carrier. The tag carrier can hold the dekafix 5, WS 12/5 terminal markers or the inlay tag ESO 15.

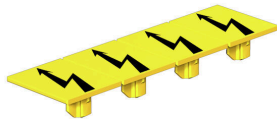
The ZGB 30 is a hinged group tag carrier. The tag carrier can hold the dekafix 5, WS 12/5 terminal markers or the inlay tag ESO 7.

Inlay tags and protective strips can be found under "Accessories".

General ordering data

| | | |
|------------|----------------------------|---|
| Type | ZGB 15 | Version |
| Order No. | 1636530000 | Terminal markers, Terminal marker, 15 x 7 mm, Pitch in mm (P): 5.00 |
| GTIN (EAN) | 4008190297053 | Weidmueller, white |
| Qty. | 20 ST | |
| Type | ZGB 30 | Version |
| Order No. | 1611930000 | Terminal markers, Terminal marker, 32 x 7 mm, Pitch in mm (P): 5.00 |
| GTIN (EAN) | 4008190002251 | Weidmueller, white |
| Qty. | 20 ST | |

Warning cover



Warning covers with a flash symbol provide more safety for man and machine. They are used where external voltage must be indicated within the application.

General ordering data

| | | |
|------------|----------------------------|--|
| Type | WAD 27 NE WS | Version |
| Order No. | 1062960000 | Group markers, Cover, 64 x 27 mm, Pitch in mm (P): 27.00 |
| GTIN (EAN) | 4008190148225 | Weidmueller, white |
| Qty. | 10 ST | |