

WQL 2 WFF300

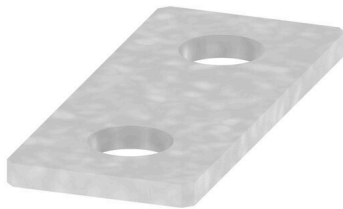
Weidmüller Interface GmbH & Co. KG

Klingenbergstraße 26

D-32758 Detmold

Germany

www.weidmueller.com



The distribution or multiplication of a potential to adjoining terminal blocks is realized via a cross-connection. Additional wiring effort can be easily avoided. Even if the poles are broken out, contact reliability in the terminal blocks is still ensured. Our portfolio offers pluggable and screwable cross-connection systems for modular terminal blocks.

General ordering data

Version	Bolt-type screw terminals, Cross-connector, Number of poles: 2
Order No.	1065300000
Type	WQL 2 WFF300
GTIN (EAN)	4008 1901 10000
Qty.	5 items

WQL 2 WFF300

Weidmüller Interface GmbH & Co. KG
Klingenbergstraße 26
D-32758 Detmold
Germany

www.weidmueller.com

Technical data

Approvals

ROHS	Conform
------	---------

Dimensions and weights

Depth	5 mm	Depth (inches)	0.1968 inch
Height	95 mm	Height (inches)	3.7401 inch
Width	40 mm	Width (inches)	1.5748 inch
Net weight	146.8 g		

Temperatures

Storage temperature	-25 °C...55 °C	Ambient temperature	-5 °C...40 °C
---------------------	----------------	---------------------	---------------

Environmental Product Compliance

RoHS Compliance Status	Compliant without exemption
REACH SVHC	No SVHC above 0.1 wt%

Material data

Basic material	Copper - zinc	Colour	grey
----------------	---------------	--------	------

Additional technical data

Type of fixing	when screwed in	Installation advice	Direct mounting
Explosion-tested version	No		

Dimensions

Pitch in mm (P)	55.00 mm
-----------------	----------

General

Number of poles	2	Installation advice	Direct mounting
-----------------	---	---------------------	-----------------

Rating data

Rated voltage	400 V	Nominal current	520 A
---------------	-------	-----------------	-------

Classifications

ETIM 8.0	EC000489	ETIM 9.0	EC000489
ETIM 10.0	EC000489	ECLASS 14.0	27-25-03-03
ECLASS 15.0	27-25-03-03		