

VSSC4 GDT 24VAC/DC 20KA**Weidmüller Interface GmbH & Co. KG**

Klingenbergstraße 26

D-32758 Detmold

Germany

www.weidmueller.com

Surge protection with individual components
With gas discharge tubes in terminal design
Gas discharge tubes/spark gaps (GDT) are used in the terminal design. They are approved for a maximum DC voltage, which is printed on the component. Any voltage greater than the specified value is safely discharged in approx. 10-100 μ s. Gas discharge tubes are used for higher power ratings. Any voltage greater than that specified is safely discharged in approx. 10-100 μ s. Gas discharge tubes are used for higher power ratings.

General ordering data

| | |
|------------|---|
| Version | Surge protection for instrumentation and control, Surge protection for measurement and control |
| Order No. | 1064030000 |
| Type | VSSC4 GDT 24VAC/DC 20KA |
| GTIN (EAN) | 4032248829446 |
| Qty. | 5 items |

VSSC4 GDT 24VAC/DC 20KA

Weidmüller Interface GmbH & Co. KG

Klingenbergstraße 26

D-32758 Detmold

Germany

www.weidmueller.com

Technical data

Approvals

Approvals



ROHS Conform

Dimensions and weights

| | | | |
|------------|---------|-----------------|-------------|
| Depth | 58.5 mm | Depth (inches) | 2.3031 inch |
| Height | 76 mm | Height (inches) | 2.9921 inch |
| Width | 6.2 mm | Width (inches) | 0.2441 inch |
| Net weight | 37.8 g | | |

Temperatures

| | | | |
|---------------------|----------------|-----------------------|----------------|
| Storage temperature | -40 °C...80 °C | Operating temperature | -40 °C...70 °C |
| Humidity | 5...96 % | | |

Probability of failure

| | | | |
|------------------------------------|-------|------|---------|
| SIL in compliance with IEC 61508 | 3 | MTTF | 11416 a |
| SFF | 100 % | λges | 10 |
| PFH in 1*10 ⁻⁹ per hour | 0 | | |

Environmental Product Compliance

| | |
|------------------------|-----------------------------|
| RoHS Compliance Status | Compliant without exemption |
| REACH SVHC | No SVHC above 0.1 wt% |

CSA protection data

| | | | |
|------------------------------|------|----------------------------|------|
| Gas group D | IIA | Gas groups A, B | IIC |
| Input-current, max. II | 20 A | Gas group C | IIB |
| Internal inductance, max. LI | 0 µH | Internal capacity, max. CI | 0 nF |
| Input voltage, max. Ui | 42 V | | |

General data

| | | | |
|---------------------------|--|---------------|------------------------------------|
| Optical function display | No | Segment | Measurement - Monitoring - Setting |
| Version | Surge protection for measurement and control | Design | Terminal |
| UL 94 flammability rating | V-0 | Colour | black |
| Protection degree | IP20 | Mounting rail | TS 35 |
| Isolating function | No | | |

Insulation coordination acc. to EN 50178

| | | | |
|------------------------|-----|--------------------|---|
| Surge voltage category | III | Pollution severity | 2 |
|------------------------|-----|--------------------|---|

Rated data IEC / EN

| | | | |
|--------------------|------|--------------------|------|
| Number of poles | 1 | Rated voltage (AC) | 24 V |
| Rated voltage (DC) | 34 V | Rated current IN | 20 A |

VSSC4 GDT 24VAC/DC 20kA**Weidmüller Interface GmbH & Co. KG**

Klingenbergstraße 26
D-32758 Detmold
Germany

www.weidmueller.com

Technical data

| | | | |
|---|------------------|--|------------------|
| Voltage type | AC/DC | Volume resistance | <0.1 Ω |
| Capacitance | 4.96 pF | Standards | IEC 61643-21 |
| Lightning test current limp (10/350 μs) | 2.5 kA | Discharge current, max. (8/20 μs) | 20 kA |
| Requirements category acc. to IEC 61643-21 | C2, C3, D1 | Max. continuous voltage, U _c (AC) | 30 V |
| Max. continuous voltage, U _c (DC) | 42 V | Surge current-carrying capacity D1 | 2.5 kA 10/350 μs |
| Surge current-carrying capacity C3 | 100 A 10/1000 μs | Pulse-reset capacity | ≤ 20 ms |
| Overload - failure mode | Modus 2 | Rated load current I _L | 20 A |
| Discharge current I _{max} (8/20 μs) wire-PE20 kA | | Surge current-carrying capacity C2 | 5 kA 8/20 μs |

Further details of approvals

| | |
|------------------|--|
| GOST certificate | GOST-Zertifikat - PDF/7950_n1-n4.pdf (application/pdf) |
|------------------|--|

Connection data

| | | | |
|--|---------------------|--|-------------------|
| Stripping length | 10 mm | Type of connection | Screw connection |
| Tightening torque, min. | 0.5 Nm | Tightening torque, max. | 0.8 Nm |
| Clamping range, min. | 0.5 mm ² | Clamping range, max. | 4 mm ² |
| Wire cross-section, solid, min. | 0.5 mm ² | Wire cross-section, solid, max. | 6 mm ² |
| Conductor cross-section, flexible, AEH (DIN 46228-1), min. | 0.5 mm ² | Conductor cross-section, flexible, AEH (DIN 46228-1), max. | 4 mm ² |
| Connection cross-section, stranded, min. | 0.5 mm ² | Connection cross-section, stranded, max. | 4 mm ² |

Electrical data

| | |
|--------------|-------|
| Voltage type | AC/DC |
|--------------|-------|

General data

| | | | |
|-----------------|-------|-------------------|------|
| Number of poles | 1 | Protection degree | IP20 |
| Colour | black | | |

Ratings IECEx/ATEX/cUL

| | |
|-----------------|--|
| cUL certificate | cUL Certificate - pdf/VSSC.PDF (application/pdf) |
|-----------------|--|

Important note

| | |
|---------------------|--|
| Product information | Mode 2: State where the voltage-limiting part of the SPD was short-circuited due to a very low impedance within the SPD. The line is inoperable, but the measuring equipment is still protected by means of a short-circuit. |
|---------------------|--|

Classifications

| | | | |
|-------------|-------------|-------------|-------------|
| ETIM 8.0 | EC000943 | ETIM 9.0 | EC000943 |
| ETIM 10.0 | EC000943 | ECLASS 14.0 | 27-17-15-01 |
| ECLASS 15.0 | 27-17-15-01 | | |

Tender specification sheets

| | | | |
|--------------------|---|---------------------|---|
| Long specification | Feed-through terminal, 12.4mm wide with gas-filled surge voltage arrester between the | Short specification | Feed-through terminal with gas-filled surge voltage arrester between the signal line connection |
|--------------------|---|---------------------|---|

VSSC4 GDT 24VAC/DC 20KA

Weidmüller Interface GmbH & Co. KG

Klingenbergstraße 26

D-32758 Detmold

Germany

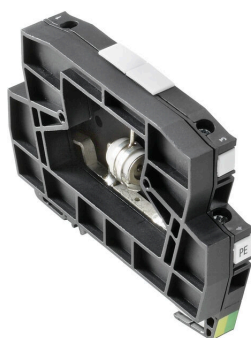
www.weidmueller.com

Technical data

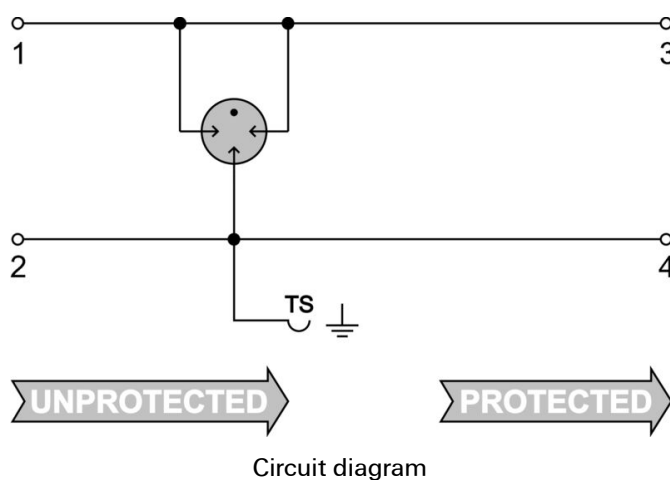
signal line connection and the mounting rail potential, TS 35 contact base. A signal with max. 32A can be protected here. When the terminal is fitted, a simultaneous electrically conducting contact is made between the mounting rail (earth) and the reference potential (ground) of the protection circuit in the terminal. Optical identification of the terminal based on the type of protected switching and the voltage level. The terminal can be labelled or marked.

and the mounting rail potential, TS 35 contact base. Version: 24V AC

Drawings



Similar to illustration



VSSC4 GDT 24VAC/DC 20KA

Weidmüller Interface GmbH & Co. KG

Klingenbergstraße 26

D-32758 Detmold

Germany

www.weidmueller.com

Accessories

Accessories (end plates)

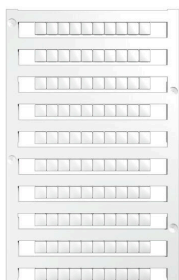


End plates (AP) for the VSSC product series in light blue and black

General ordering data

| | | |
|------------|----------------------------|-----------------|
| Type | AP VSSC4 | Version |
| Order No. | 1063120000 | VSSC, End plate |
| GTIN (EAN) | 4032248947560 | |
| Qty. | 50 ST | |

Blank



The Dekafix (DEK) marker is the universal marker for all conductor and plug-in connectors as well as for electronic sub-assemblies. The system is ideal for short number sequences and covers a wide range of ready-printed markers.

Strips for fast installation in only one work step. The printing is easy to read, rich in contrast and available in various widths.

- Large range of ready-to-use markers
 - Strips for fast installation
 - Terminal markers, suitable for all Weidmüller cable connectors
 - Available as blank MultiCard or with standard printing
- For custom printing: Please send us a file of our labeling software M-Print PRO or M-Print PRO Online (without installation) for your labeling specifications.

General ordering data

| | | |
|------------|----------------------------|---|
| Type | DEK 5/5 MC NE WS | Version |
| Order No. | 1609801044 | Dekafix, Terminal marker, 5 x 5 mm, Pitch in mm (P): 5.00 |
| GTIN (EAN) | 4008190397111 | Weidmueller, white |
| Qty. | 1000 ST | |