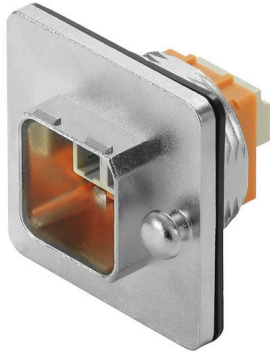


IE-BSC-V14M-LCD-MM-C

Weidmüller Interface GmbH & Co. KG
Klingenbergstraße 26
D-32758 Detmold
Germany

www.weidmueller.com



PushPull plug-in connector set according to IEC
61076-3-117 ver.14 (PROFINET), metal incl. LC insert

General ordering data

Version	Flange FO, IP67, Variant 14 central cable gland, LC Duplex coupling, Multimode
Order No.	1062610000
Type	IE-BSC-V14M-LCD-MM-C
GTIN (EAN)	4032248813322
Qty.	10 items

IE-BSC-V14M-LCD-MM-C

Weidmüller Interface GmbH & Co. KG

Klingenbergstraße 26

D-32758 Detmold

Germany

www.weidmueller.com

Technical data

Approvals

ROHS Conform

Dimensions and weights

Depth	33 mm	Depth (inches)	1.2992 inch
Height	39.6 mm	Height (inches)	1.5591 inch
Width	39.6 mm	Width (inches)	1.5591 inch
Net weight	52.9 g		

Temperatures

Storage temperature	Operating temperature	-40 °C...70 °C
Installation temperature		

Environmental Product Compliance

RoHS Compliance Status	Compliant with exemption
RoHS Exemption (if applicable/known)	6c
REACH SVHC	Lead 7439-92-1
SCIP	4f3aae94-c2bc-4010-b63b-5b114ba6bd55

General data

Description of article	Variant 14 central cable gland, LC Duplex coupling	Colour	Miscellaneous
Housing main material	Zinc diecast	Protection degree	IP67
Plugging cycles	500	Fibre type	Multimode
Insertion loss	≤ 0.4 dB	Connection 1	LC Duplex
Connection 2	LC Duplex	Return loss (attenuation)	≥ 30 dB

General standards

Connector standard	IEC 61076-3-117 Var. 14, IEC 61754-20
--------------------	--

Classifications

ETIM 8.0	EC000752	ETIM 9.0	EC000752
ETIM 10.0	EC000752	ECLASS 14.0	19-17-01-16
ECLASS 15.0	19-17-01-16		

Installation cut-out



IE-BSC-V14M-LCD-MM-C

Weidmüller Interface GmbH & Co. KG
Klingenbergstraße 26
D-32758 Detmold
Germany

www.weidmueller.com

Accessories

Dust caps



For protecting your devices against dust and dirt.

General ordering data

Type	IE-BP-V14P	Version	
Order No.	1058310000	Flange-mounted housing, protective cap	
GTIN (EAN)	4032248799404		
Qty.	10 ST		