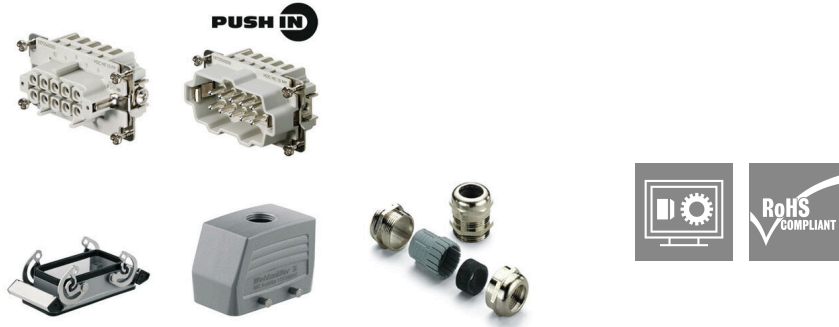


## HDC KIT HE-P 10.111

**Weidmüller Interface GmbH & Co. KG**  
 Klingenbergstraße 26  
 D-32758 Detmold  
 Germany

www.weidmueller.com



HDC kits are standardized kits for assembling complete plug-in connectors.

The HDC kits normally consist of a male insert, a female insert, a plug housing, a bulkhead housing and a cable gland.

Weidmüller offers a range of standard connector combinations with metric or PG cable entry threads.

The PUSH IN connection is a direct-insert method of connection. The preprocessed wire can be inserted directly into the wire connection without the need for any tools.

### General ordering data

Version	RockStar® HDC kits-Heavy-duty connectors, Kit, HE, Installation size: 4, Poles: 10, PUSH IN, 500 V, 16 A, diecast aluminium, PG 16
Order No.	<a href="#">1061730000</a>
Type	HDC KIT HE-P 10.111
GTIN (EAN)	4032248816439
Qty.	1 items

## HDC KIT HE-P 10.111

**Weidmüller Interface GmbH & Co. KG**  
 Klingenbergstraße 26  
 D-32758 Detmold  
 Germany

www.weidmueller.com

## Technical data

### Approvals

Approvals



ROHS Conform

### Dimensions and weights

Net weight 440 g

### Temperatures

Limit temperature -40 °C ... 100 °C

### Environmental Product Compliance

RoHS Compliance Status Compliant with exemption

RoHS Exemption (if applicable/known) 6c

REACH SVHC Lead 7439-92-1, Potassium perfluorobutane sulfonate 29420-49-3

SCIP bfb1c983-6f18-4ba4-8907-38aad6aee076

### General data

Surface finish	Powder coating	Protection degree	IP65
Series	HE		

### Version

Size of cable entries	PG 16	Number of cable entry on top	0
Number of cable entry sideways	0	Type of connection	PUSH IN
Design of locking system	Side-locking clamp on lower side	Installation size	4
Sealing	NBR	Colour (RAL)	RAL 7035
BG	4		

### General data

Number of poles	10	Connection type PE	Screw connection
Installation size	4	Cable gland	PG 16
Basic material	diecast aluminium	Series	HE
Rated voltage (DIN EN 61984)	500 V	Rated current (DIN EN 61984)	16 A
BG	4		

### Version

Type of connection	PUSH IN	Installation size	4
Conductor cross-section, max.	4 mm <sup>2</sup>	Conductor cross-section, min.	0.5 mm <sup>2</sup>
Surface finish	Powder coating	Basic material	diecast aluminium
BG	4		

### Classifications

ETIM 8.0	EC002943	ETIM 9.0	EC002943
ETIM 10.0	EC002943	ECLASS 14.0	27-44-02-92
ECLASS 15.0	27-44-02-92		

**HDC KIT HE-P 10.111**

**Weidmüller Interface GmbH & Co. KG**  
 Klingenbergstraße 26  
 D-32758 Detmold  
 Germany

www.weidmueller.com

**Accessories**

**HDC COS**

Various accessories are available for our inserts. This includes coding elements for the inserts.



**General ordering data**

Type	HDC COS 16	Version
Order No.	<a href="#">1431000000</a>	Heavy-duty connectors, Accessories, Coding System
GTIN (EAN)	4008190052706	
Qty.	1 ST	
Type	HDC COS 24	Version
Order No.	<a href="#">1430900000</a>	Heavy-duty connectors, Accessories, Coding System
GTIN (EAN)	4008190077228	
Qty.	1 ST	
Type	HDC COS 32	Version
Order No.	<a href="#">1430800000</a>	Heavy-duty connectors, Accessories, Coding System
GTIN (EAN)	4008190176181	
Qty.	1 ST	

**SPB**

Various accessories are available for our inserts. This includes coding elements for the inserts.



**General ordering data**

Type	SPB-M 3	Version
Order No.	<a href="#">1203600000</a>	Heavy-duty connectors, Accessories, Lock bolts
GTIN (EAN)	4008190120047	
Qty.	100 ST	